

# Supporting information

for

## Identifying selective inhibitors against the human cytosolic sialidase NEU2 by substrate specificity studies

Yanhong Li, Hongzhi Cao,<sup>§</sup> Hai Yu, Yi Chen, Kam Lau, Jingyao Qu, Vireak Thon, Go Sugiarto,  
Xi Chen\*

*Department of Chemistry, University of California, One Shields Avenue, Davis, CA 95616, USA.*

*E-mail: chen@chem.ucdavis.edu; Fax: +1 530-752-8995; Tel: +1 530-754-6037*

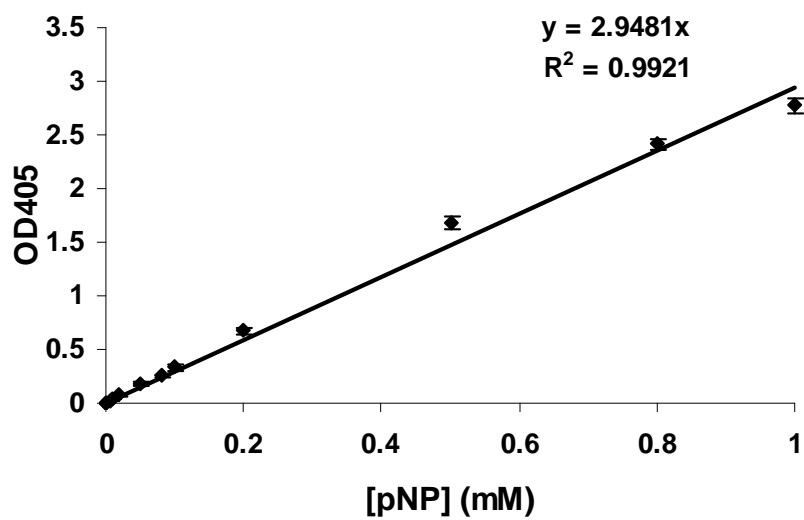
<sup>§</sup>*Current Address: National Glycoengineering Research Center, Shandong University, Jinan,*

*Shandong 250012, China*

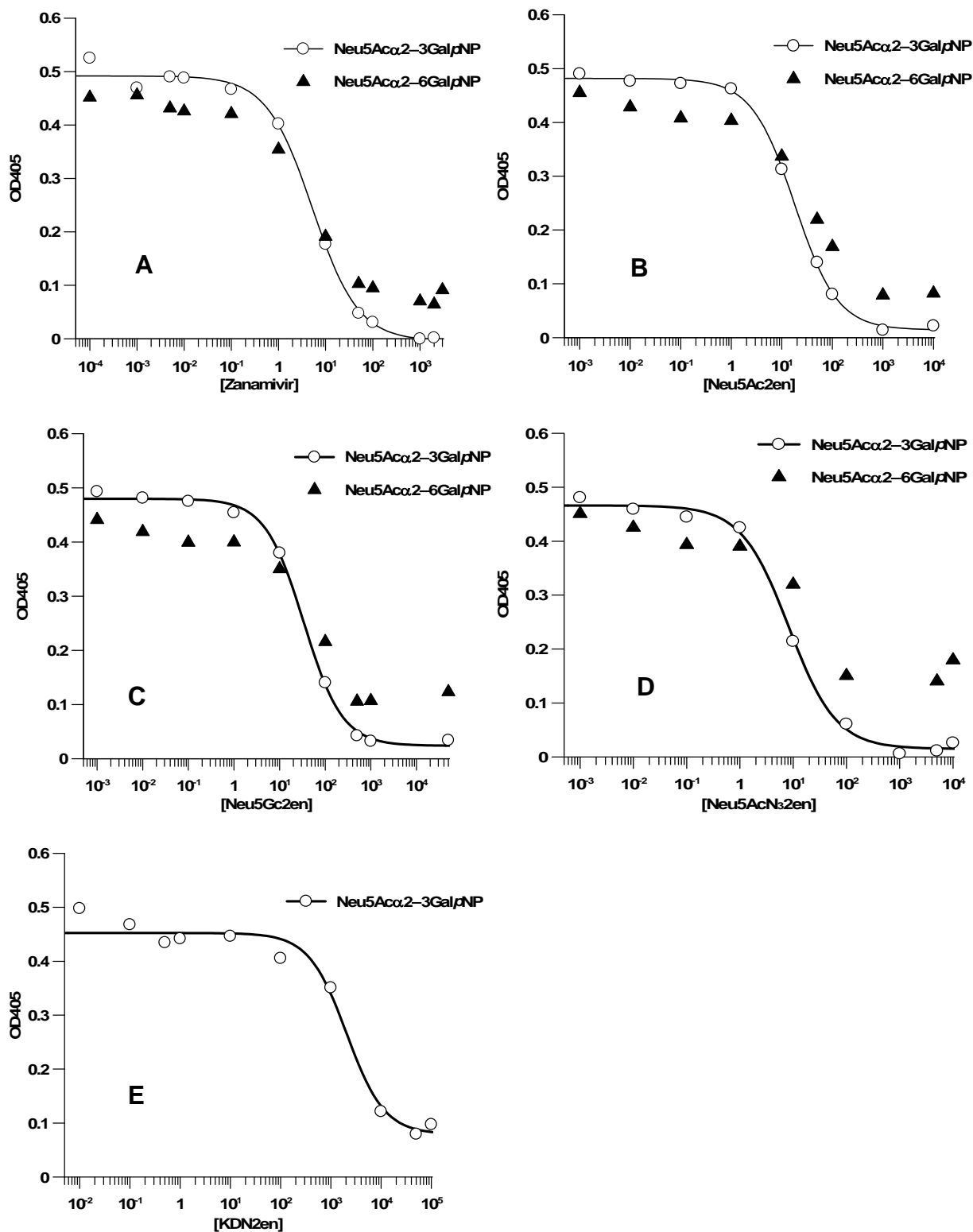
## Table of Contents

Fig. S1 Standard curve of <i>para</i> -nitrophenol ( <i>p</i> NP).....	S2
Fig. S2 Graphs for determining IC <sub>50</sub> values of NEU2.....	S3
Fig. S3 Graphs for determining IC <sub>50</sub> values of bacterial sialidases .....	S4
<sup>1</sup> H and <sup>13</sup> C NMR spectra for compounds 11–14 .....	S5–S8

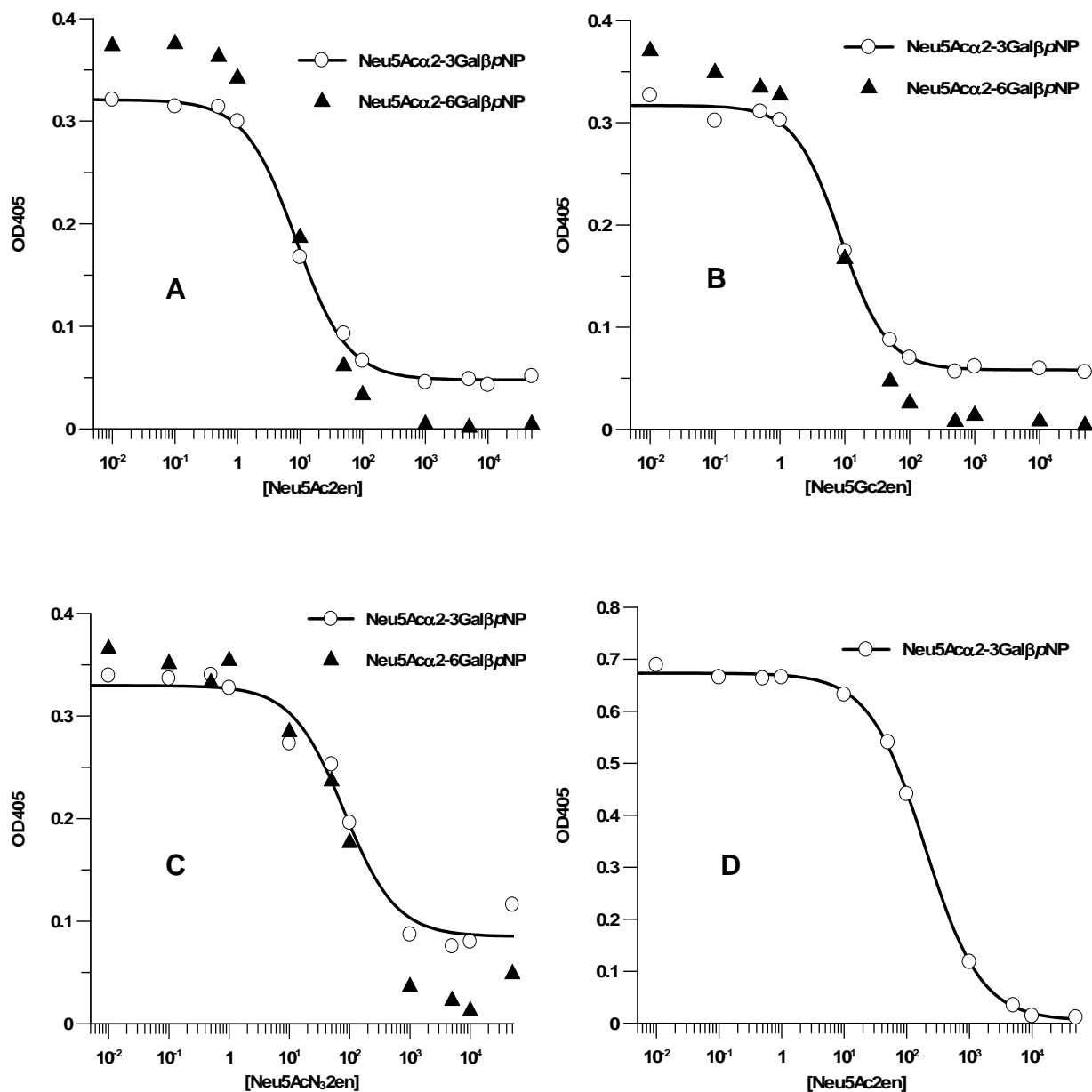
Fig. S1 Standard curve of *para*-nitrophenol (pNP).



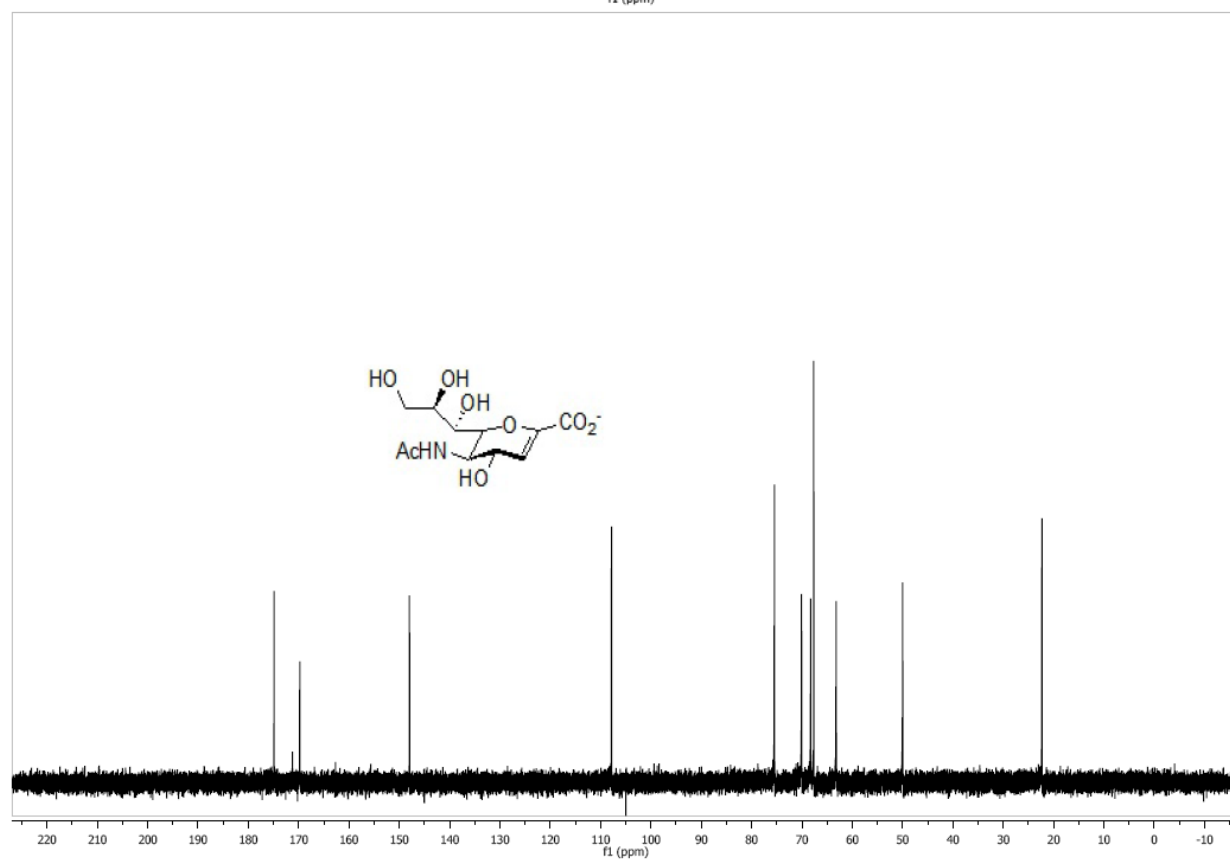
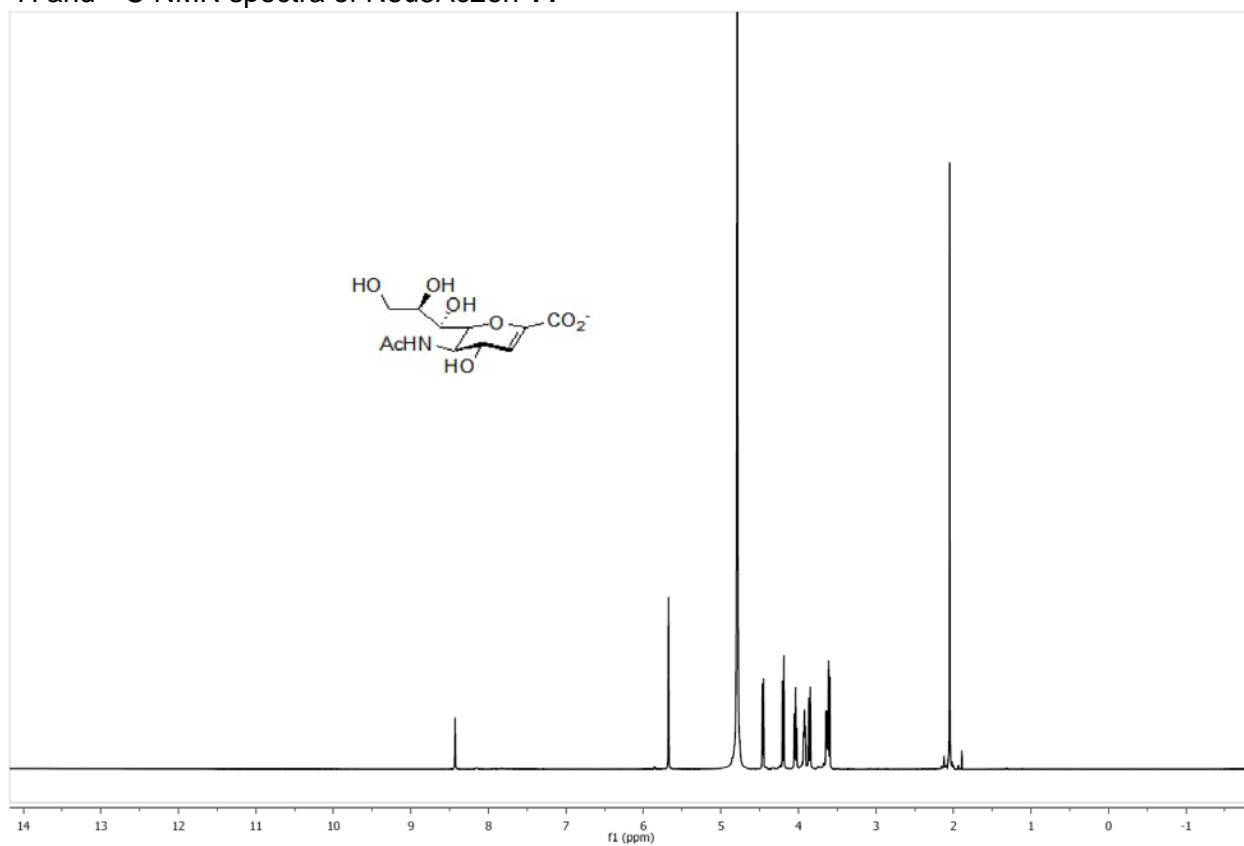
**Fig. S2** Graphs for determining IC<sub>50</sub> values for human sialidase NEU2. Concentrations of Zanamivir (**A**), Neu5Ac2en **11** (**B**), Neu5Gc2en **12** (**C**), Neu5AcN<sub>3</sub>2en **13** (**D**), or KDN2en **14** (**E**) were varied from 0–100 mM in the presence of a fixed concentration (1 mM) of substrate Neu5Ac $\alpha$ 2–3Gal $\beta$ pNP (open circle) or Neu5Ac $\alpha$ 2–6Gal $\beta$ pNP (closed triangle).



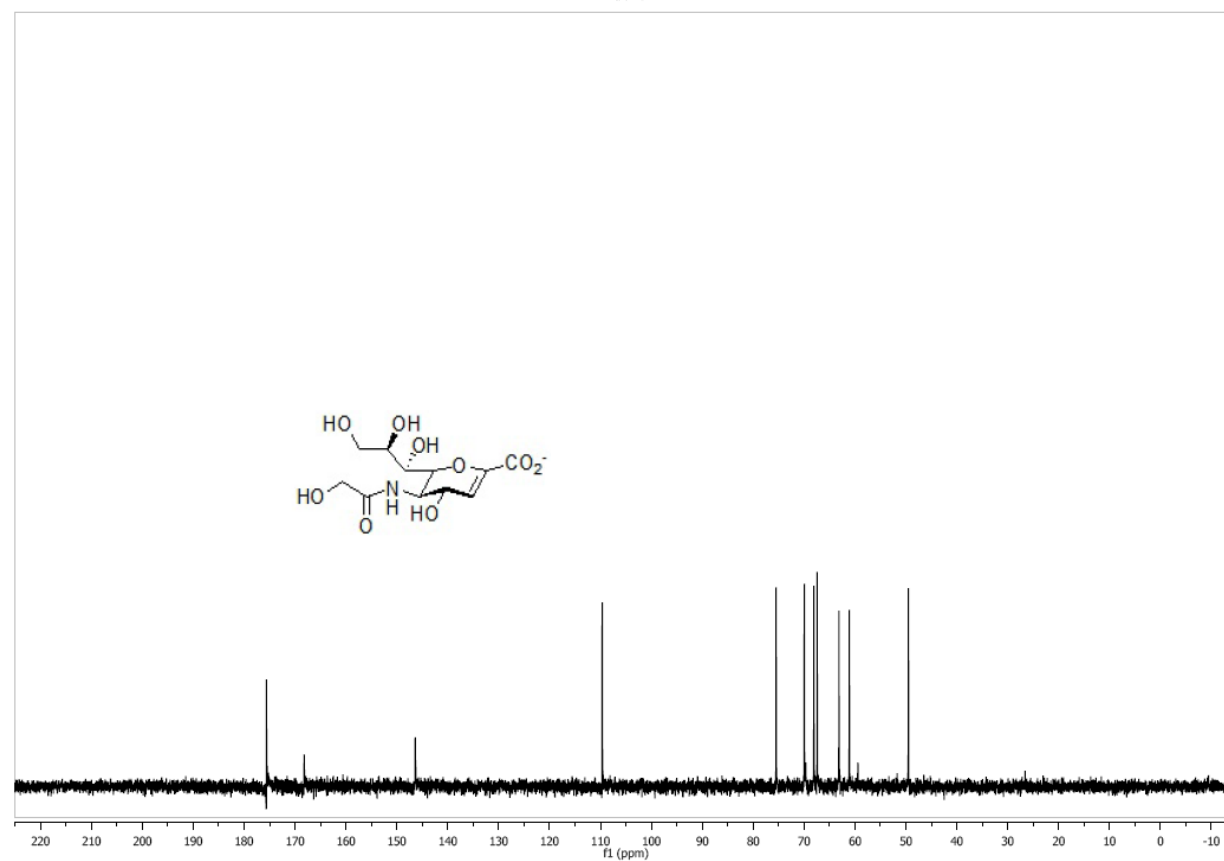
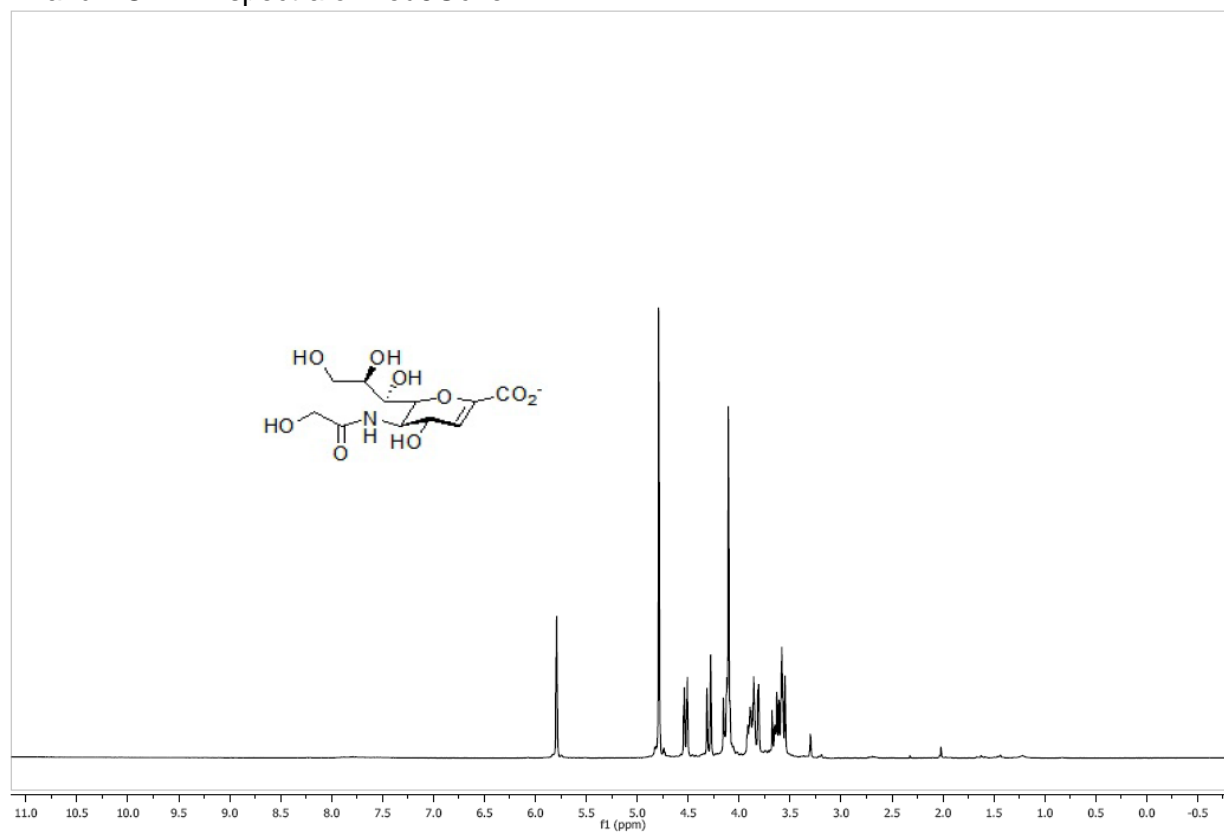
**Fig. S3** Graphs for determining  $IC_{50}$  values for *Vibrio cholera* sialidase (V.C.) (A, B, and C) and *Salmonella typhimurium* sialidase (S.T.) (D). Concentrations of Neu5Ac2en 11, Neu5Gc2en 12, Neu5AcN<sub>3</sub>2en 13, or KDN2en 14 were varied from 0 to 500 mM in the presence of a fixed concentration (1 mM) of substrate Neu5Ac $\alpha$ 2-3Gal $\beta$ pNP (open circle) or Neu5Ac $\alpha$ 2-6Gal $\beta$ pNP (closed triangle).



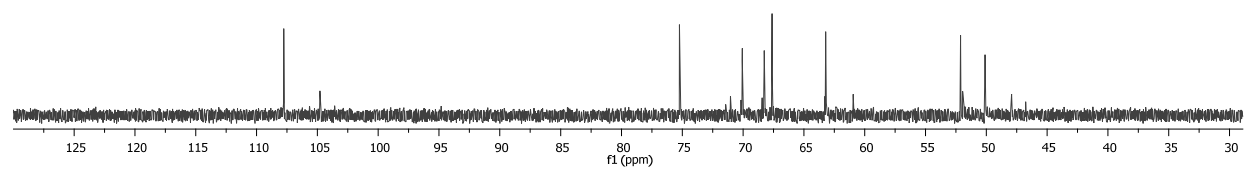
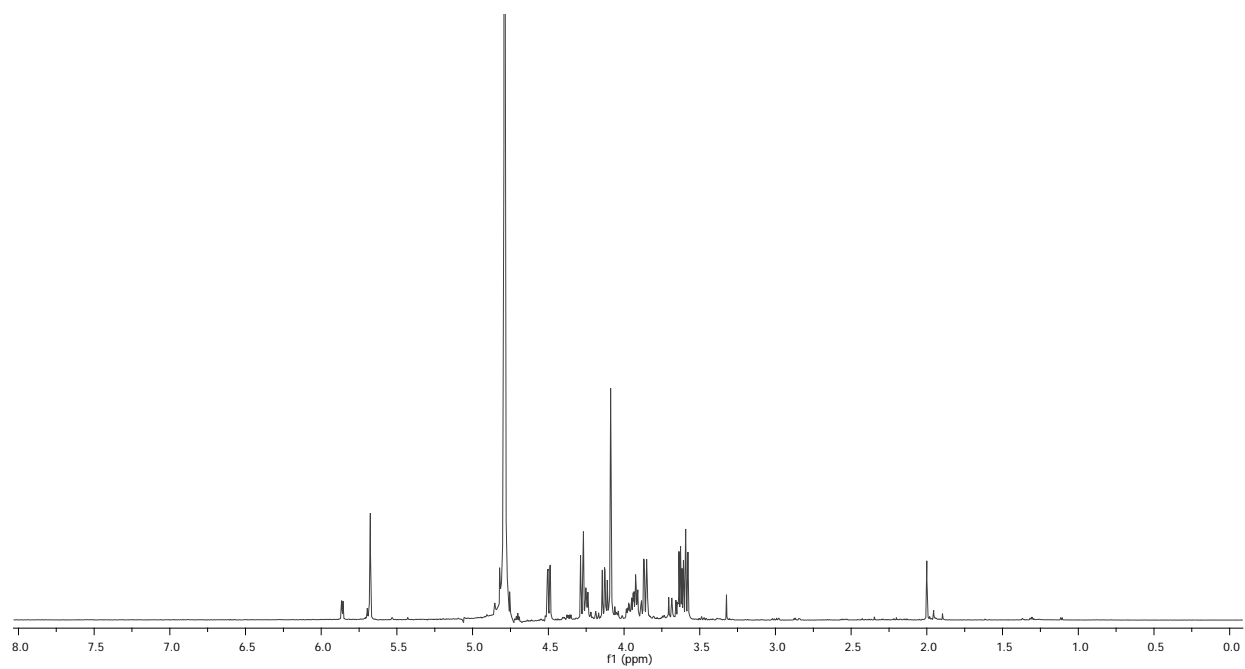
$^1\text{H}$  and  $^{13}\text{C}$  NMR spectra of Neu5Ac2en **11**



$^1\text{H}$  and  $^{13}\text{C}$  NMR spectra of Neu5Gc2en **12**



$^1\text{H}$  and  $^{13}\text{C}$  NMR spectra of Neu5AcN<sub>3</sub>2en **13**



$^1\text{H}$  and  $^{13}\text{C}$  NMR spectra of KDN2en **14**

