

Supplementary Information

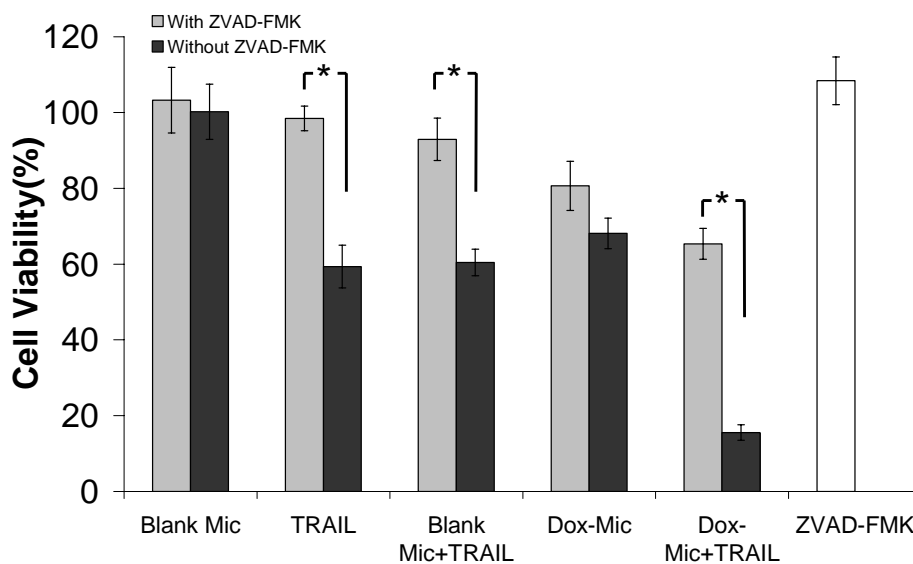


Figure S1. Viability of parental SW480 cells in the presence or absence of pan-caspase inhibitor ZVAD-FMK pretreatment (50 μ M) prior to 48 hour incubation with nanocomplexes. P(MDS-*co*-CES) and TRAIL concentrations were fixed at 5 mg/l and 10 nM respectively. Dox loading level: 8.6%. Cell culture was performed in serum-containing medium. The error bars represent the mean \pm S.D. (n=3).

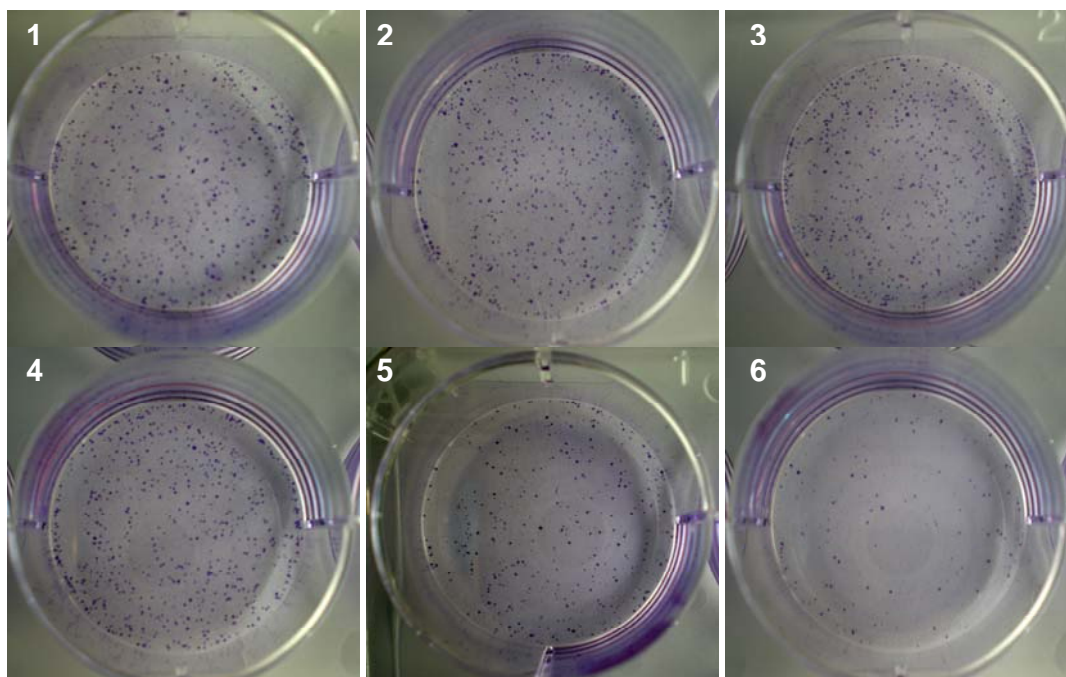


Figure S2. Images of SW480 colony taken at Day 9 subsequent to 48 hours treatment with (1) control, (2) blank nanoparticles, (3) TRAIL, (4) nanoparticle/TRAIL complexes, (5) Dox-loaded nanoparticles and (6) Dox-loaded nanoparticle/TRAIL complexes. P(MDS-*co*-CES) and TRAIL were fixed at 1 mg/l and 10 nM respectively. Dox loading level = 8.6%. Colonies were stained with 0.5% w/v crystal violet.