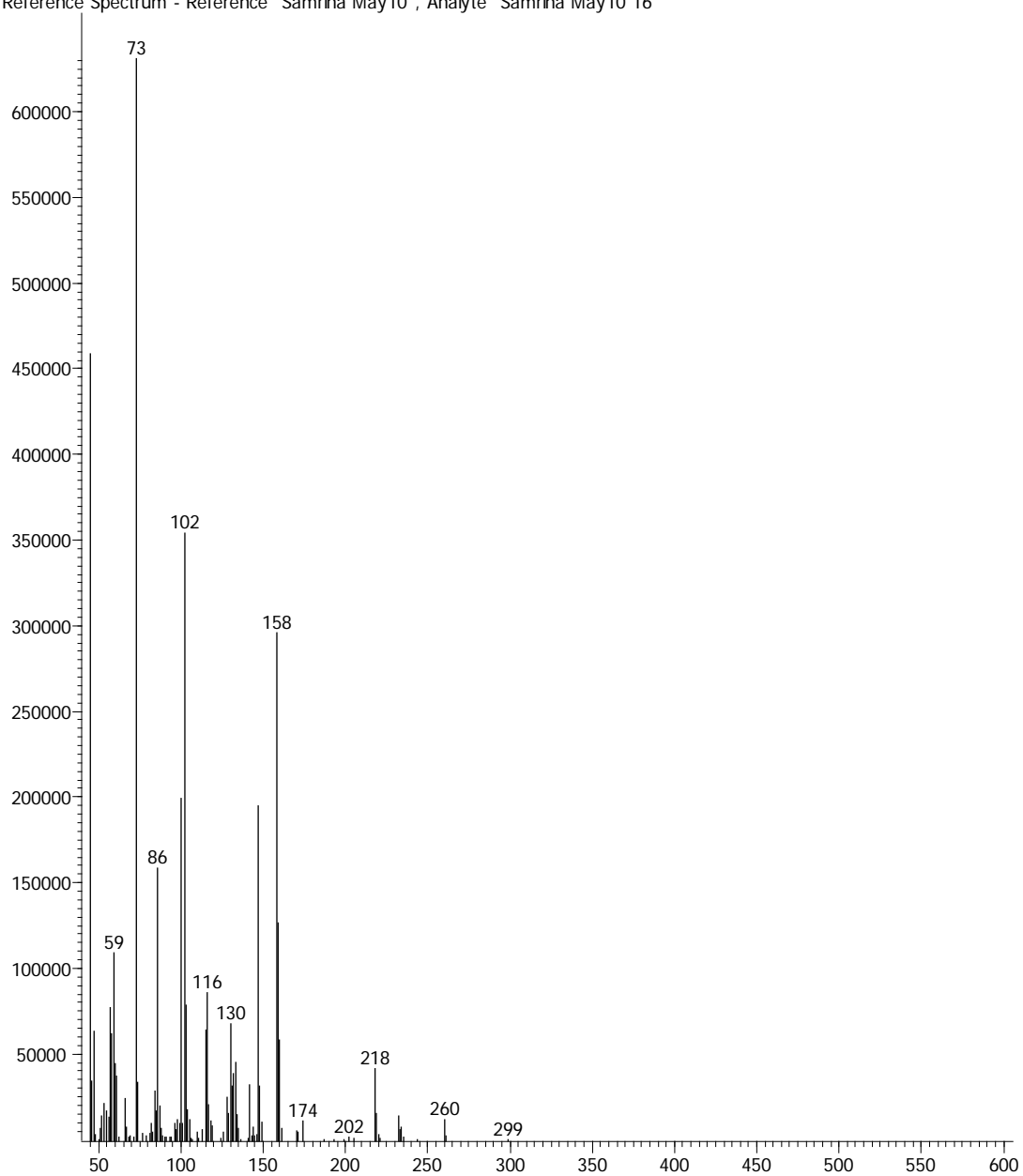


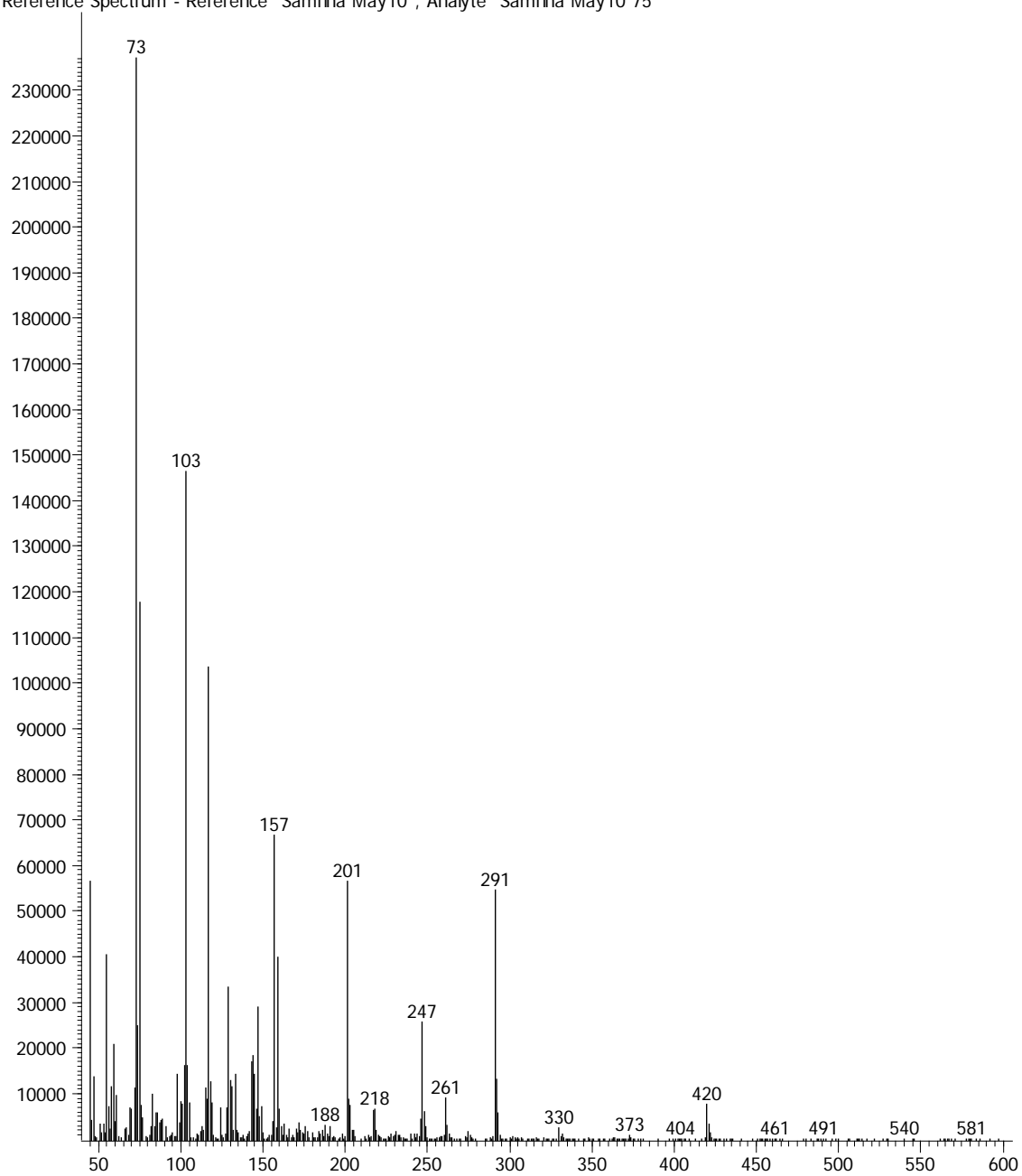
8 a) L-Leucine MW 131.173

Reference Spectrum - Reference "Samrina May10", Analyte "Samrina May10 16"



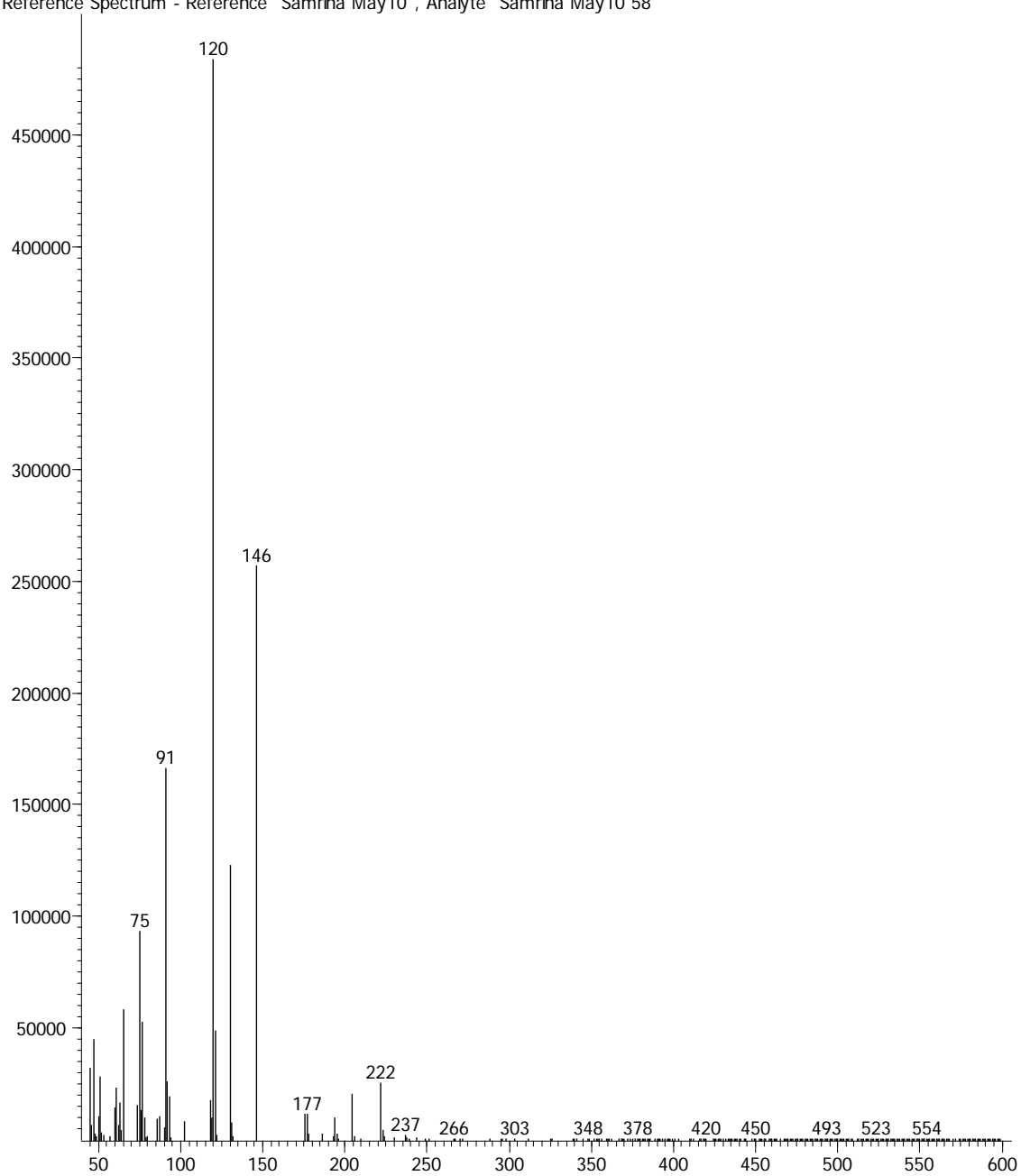
8 b) Pantothenic acid MW 219.235

Reference Spectrum - Reference "Samrina May10", Analyte "Samrina May10 75"



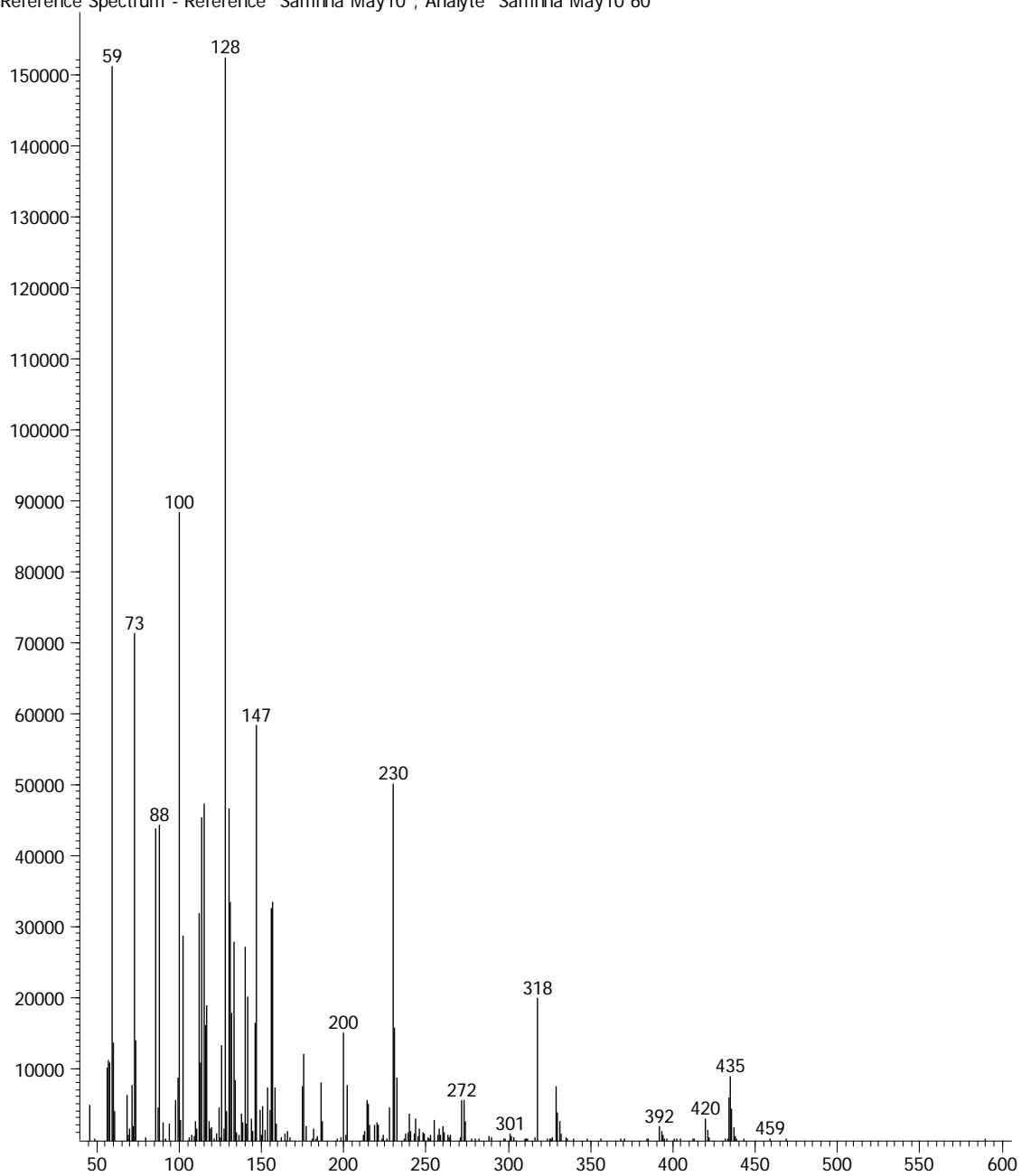
8 c) L-Phenylalanine MW 165.189

Reference Spectrum - Reference "Samrina May10", Analyte "Samrina May10 58"



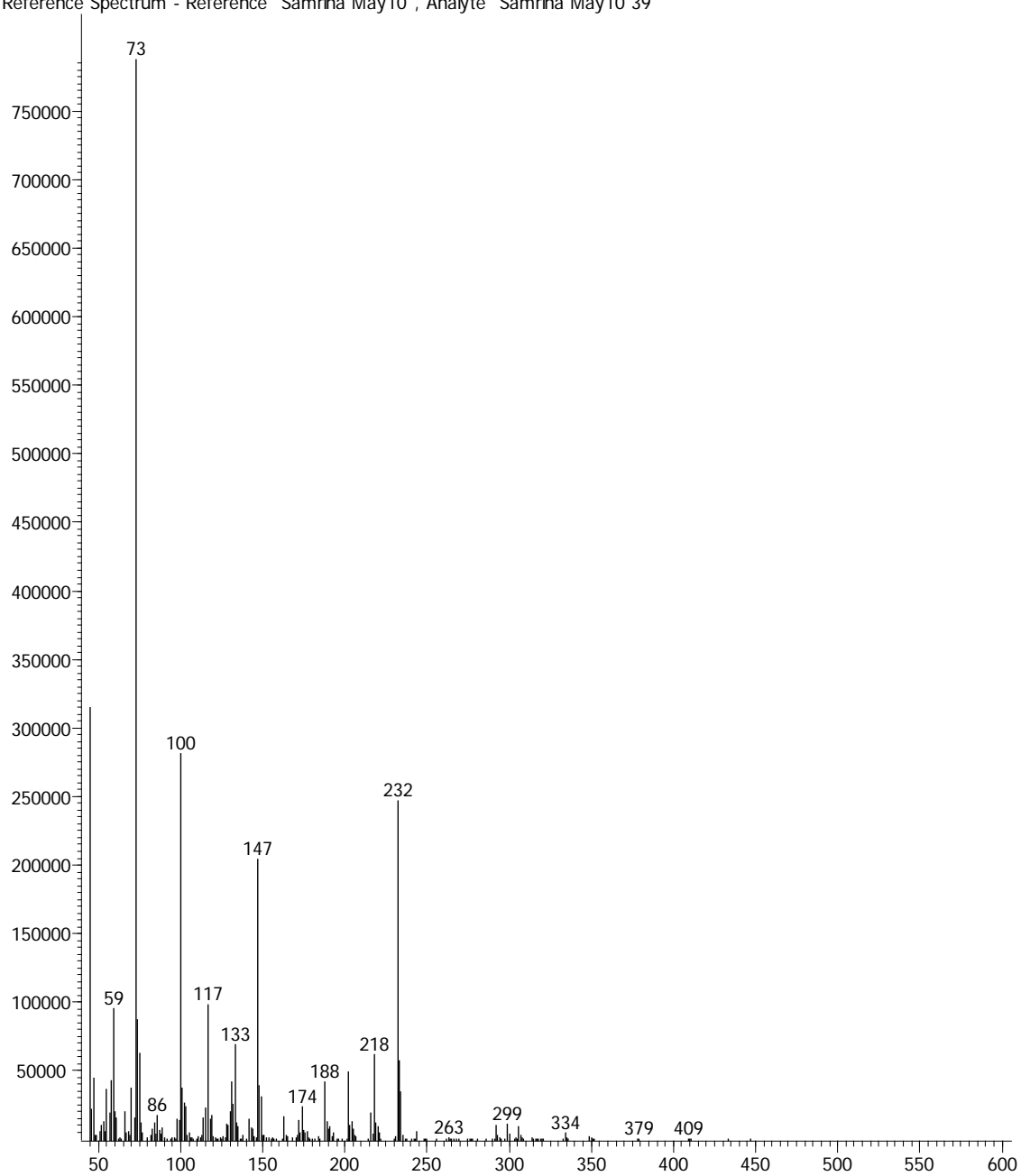
8 d) L-Lysine MW 146.18

Reference Spectrum - Reference "Samrina May10", Analyte "Samrina May10 60"



8 e) L-Aspartic acid MW 133.10

Reference Spectrum - Reference "Samrina May10", Analyte "Samrina May10 39"



8 f) L-Cysteine MW 121.158

Reference Spectrum - Reference "Samrina May10", Analyte "Samrina May10 42"

