

Role of Block Copolymer-Micelle Nano-Composite in Dye-Bovine Serum Albumin Binding: A Combined Experimental and Molecular Docking Study

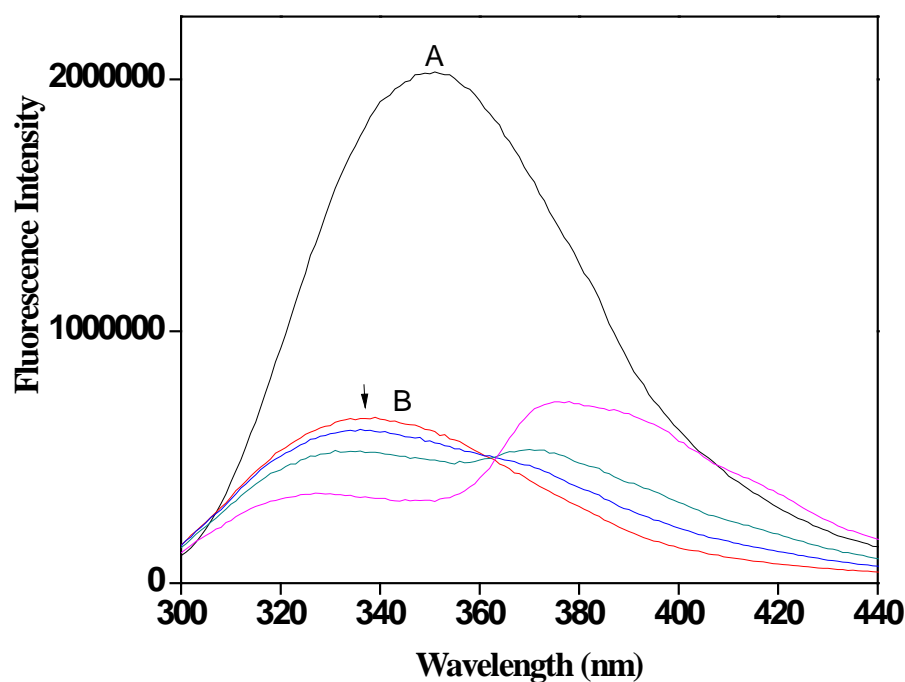


Figure S1. Fluorescence spectrum of native BSA (60μM) (A) and BSA on addition of 25mM SDS (B) with gradual addition of NAPMD (arrow head showing the change of BSA fluorescence band with increasing concentration of NAPMD) (a) 3.33μM, (b) 8.33μM and (c) 16.67μM.

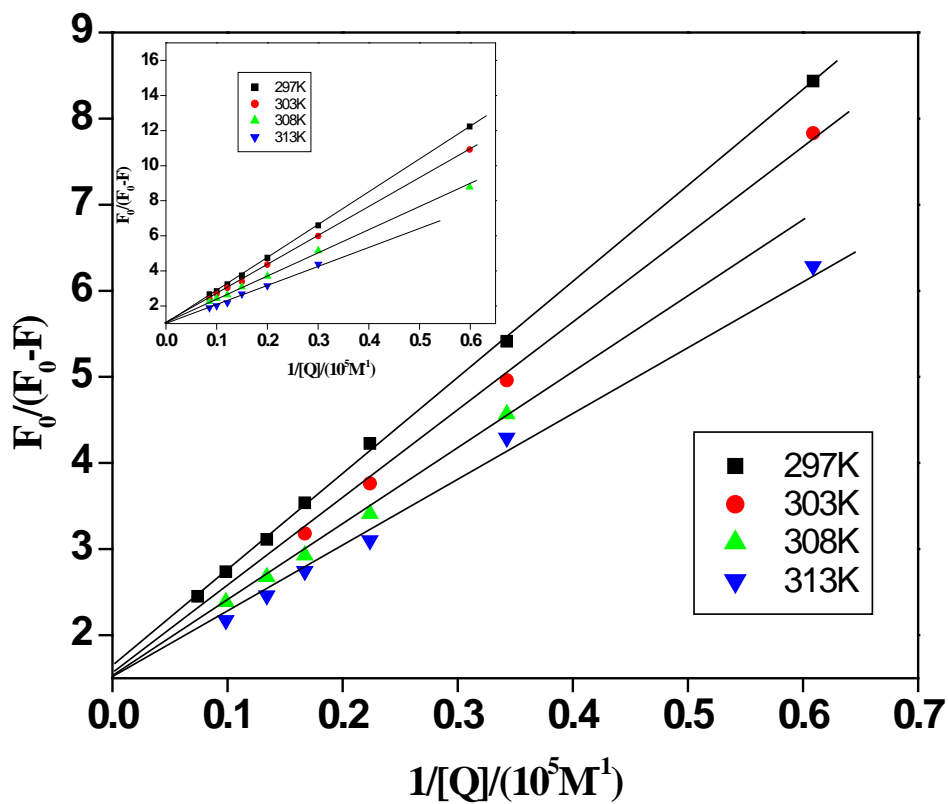
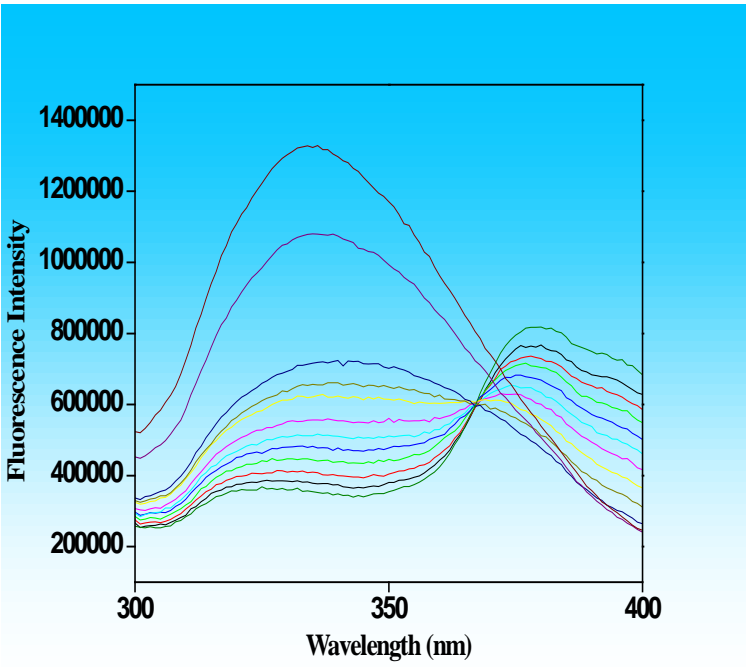
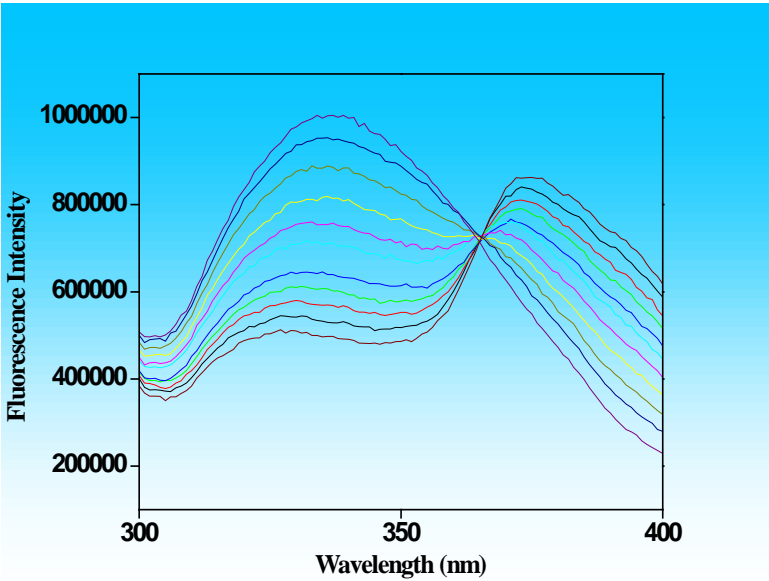


Figure S2. Modified Stern-Volmer plots of BSA-NAP system at different temperatures in buffer solution. Inset- Modified Stern-Volmer plots of BSA-NAP system at different temperatures in nano-composite medium.



(a)



(b)

Figure S3. Site competitive replacement experiments of (a) BSA in presence of DP in ratio 1:1 in nano-composite medium with increasing concentration of NAPMD (i) 1.67, (ii) 3.33, (iii) 5, (iv) 6.67, (v) 8.33, (vi) 10, (vii) 11.67, (viii) 13.33, (ix) 15, (x) 16.67 μ M and (b) BSA in presence of DNSA in ratio 1:1 in nano-composite medium with increasing concentration of NAPMD (i) 1.67, (ii) 3.33, (iii) 5, (iv) 6.67, (v) 8.33, (vi) 10, (vii) 11.67, (viii) 13.33, (ix) 15, (x) 16.67 μ M.

