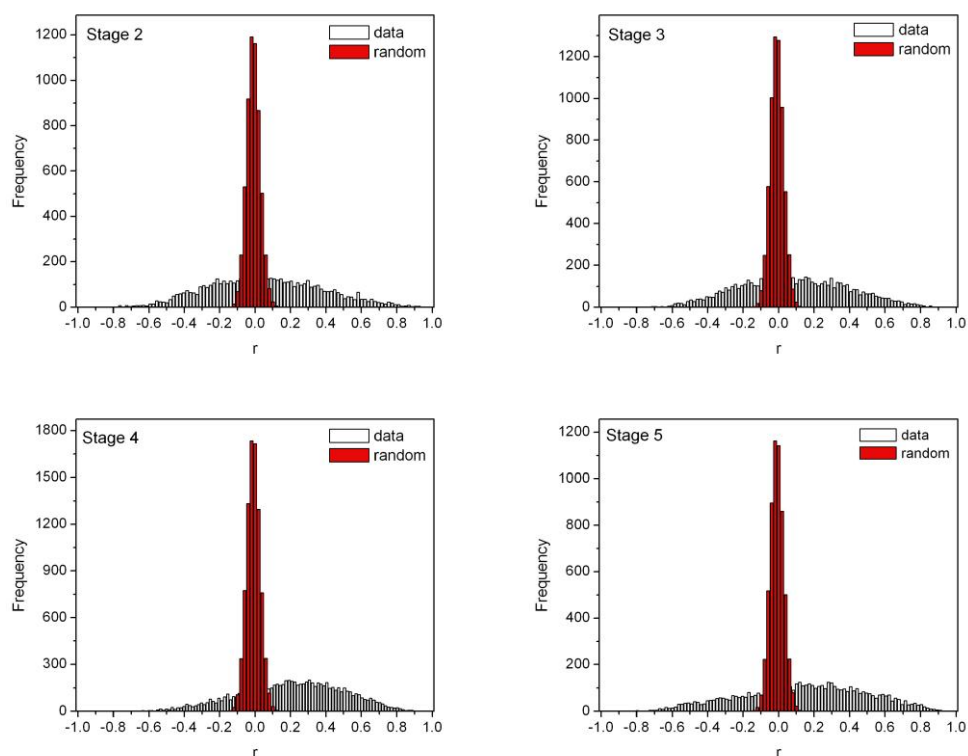


A methodology to infer gene networks from spatial patterns of expression - An application to fluorescence *in situ* hybridization images

Supplementary Material

The distributions of correlation coefficients for the stages 2 to 5 and the corresponding distribution of the random ensembles.



The cut-off value was defined as $r_0 = 0.75$ that corresponds to a p-value $< 10^{-5}$ for a gaussian fitted to the random ensemble distribution curve.