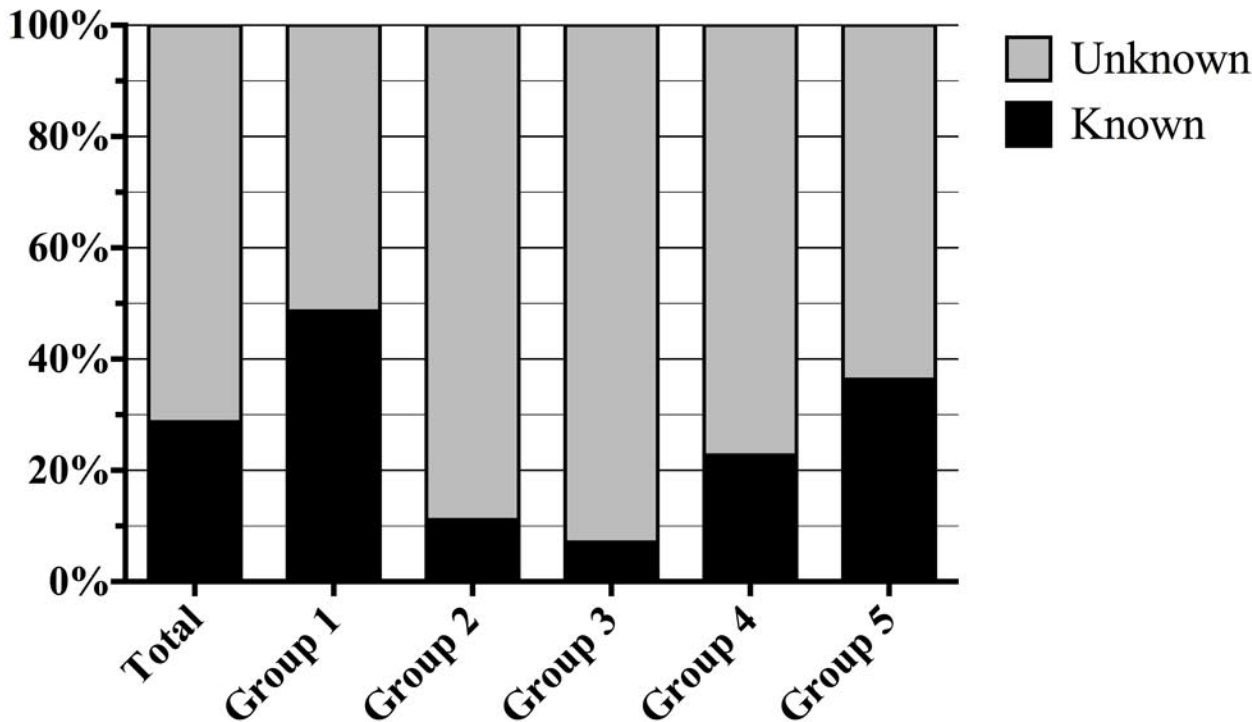
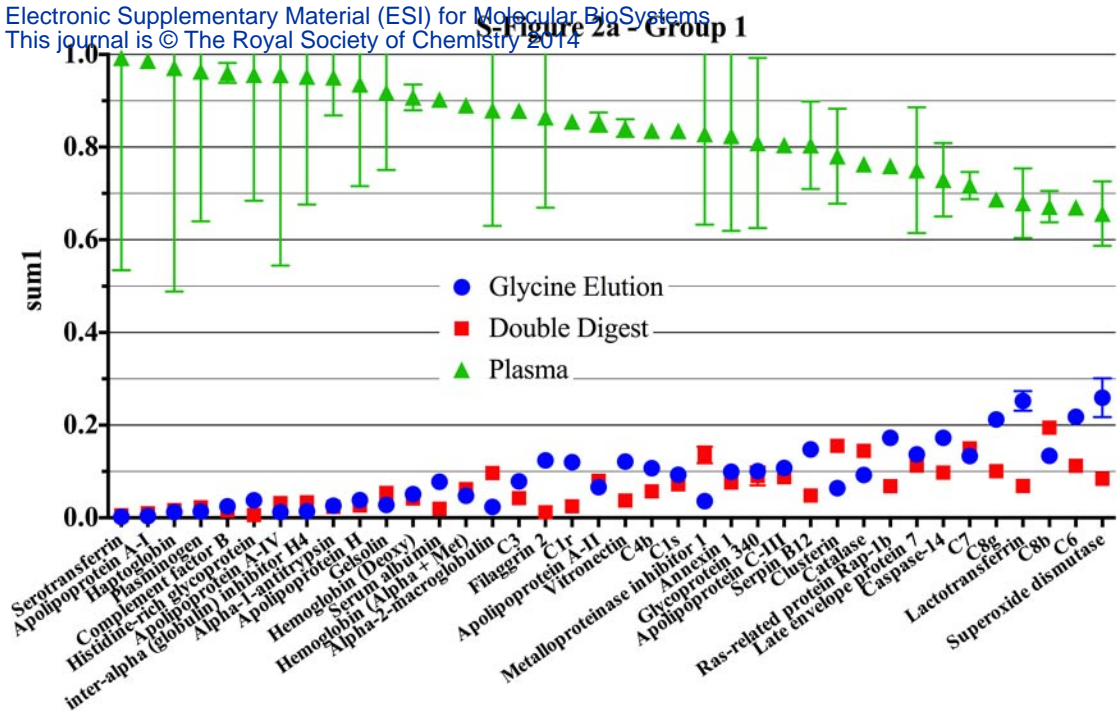


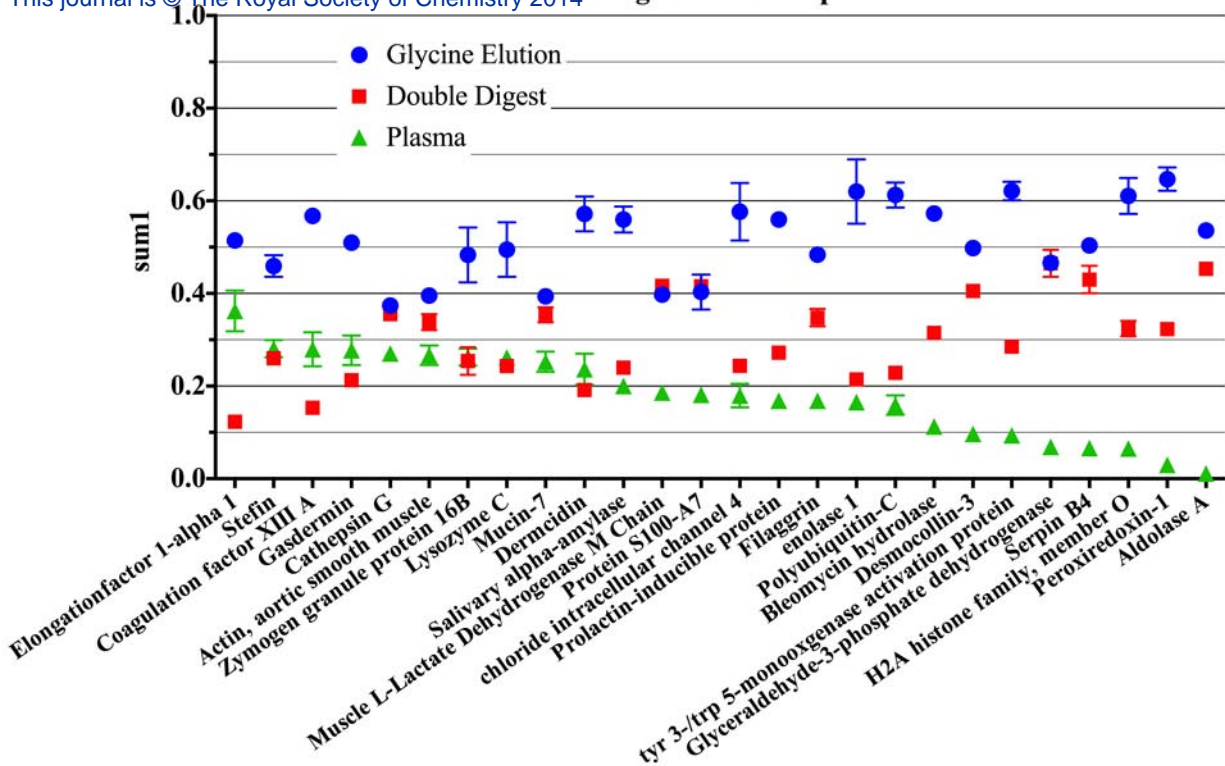
S-Figure 1



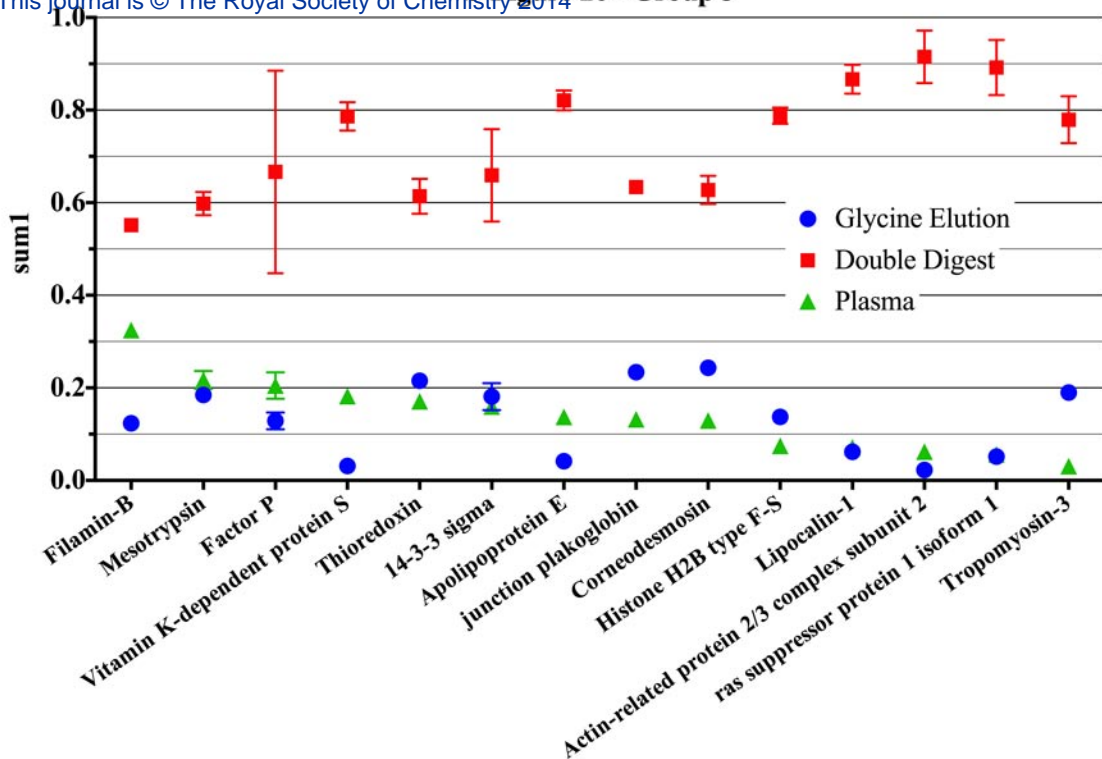
S-Figure 1. Proteins with previously known (blue) or unknown (red) interaction with the streptococcal surface, from literature. Groups defined in Figure 2 and total contains all groups. Proteins marked with * in S-table 4 have previously known interaction with *S. pyogenes* surface.



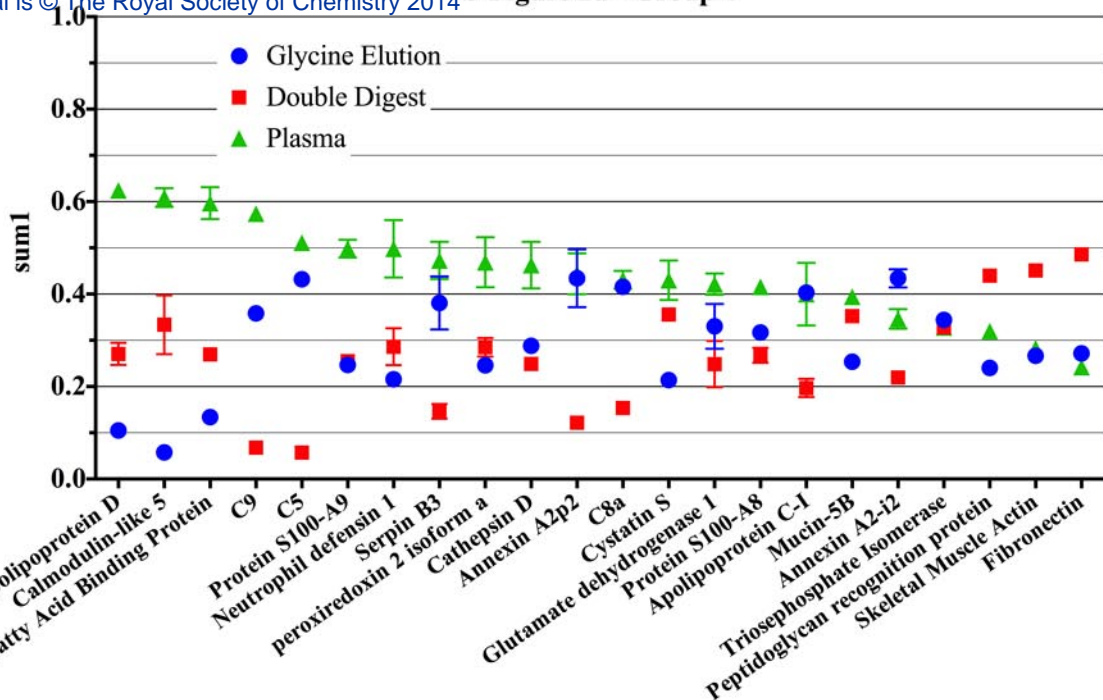
S-Figure 2a. Enlargement of Figure 2, with only group 1 and name for the proteins within the group



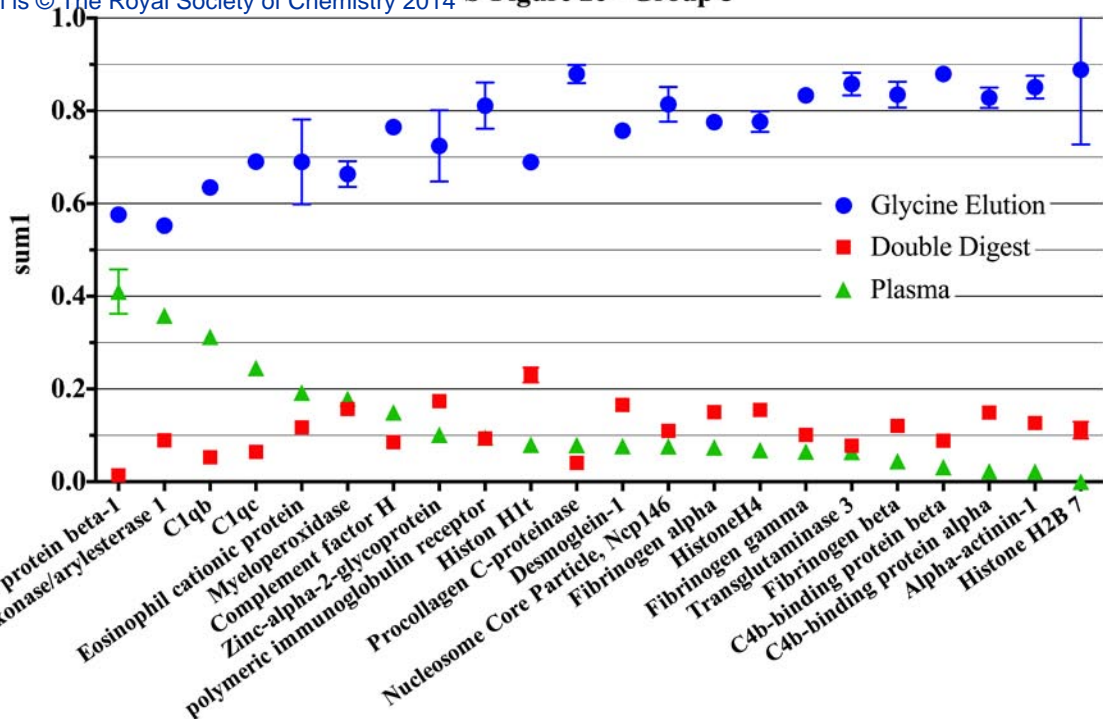
S-Figure 2b. Enlargement of Figure 2, with only group 2 and name for the proteins within the group



S-Figure 2c. Enlargement of Figure 2, with only group 3 and name for the proteins within the group



S-Figure 2d. Enlargement of Figure 2, with only group 4 and name for the proteins within the group

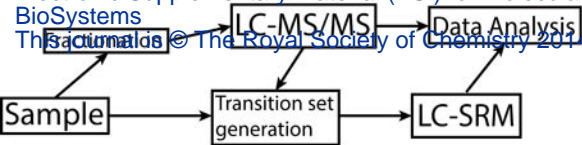


S-Figure 2e. Enlargement of Figure 2, with only group 5 and name for the proteins within the group

Electronic Supplementary Material (ESI) for Molecular
BioSystems

This journal is © The Royal Society of Chemistry 2014

S-Figure 3



Schematic figure for the analysis of bacterial interaction protein, 2 different MS methods are used.