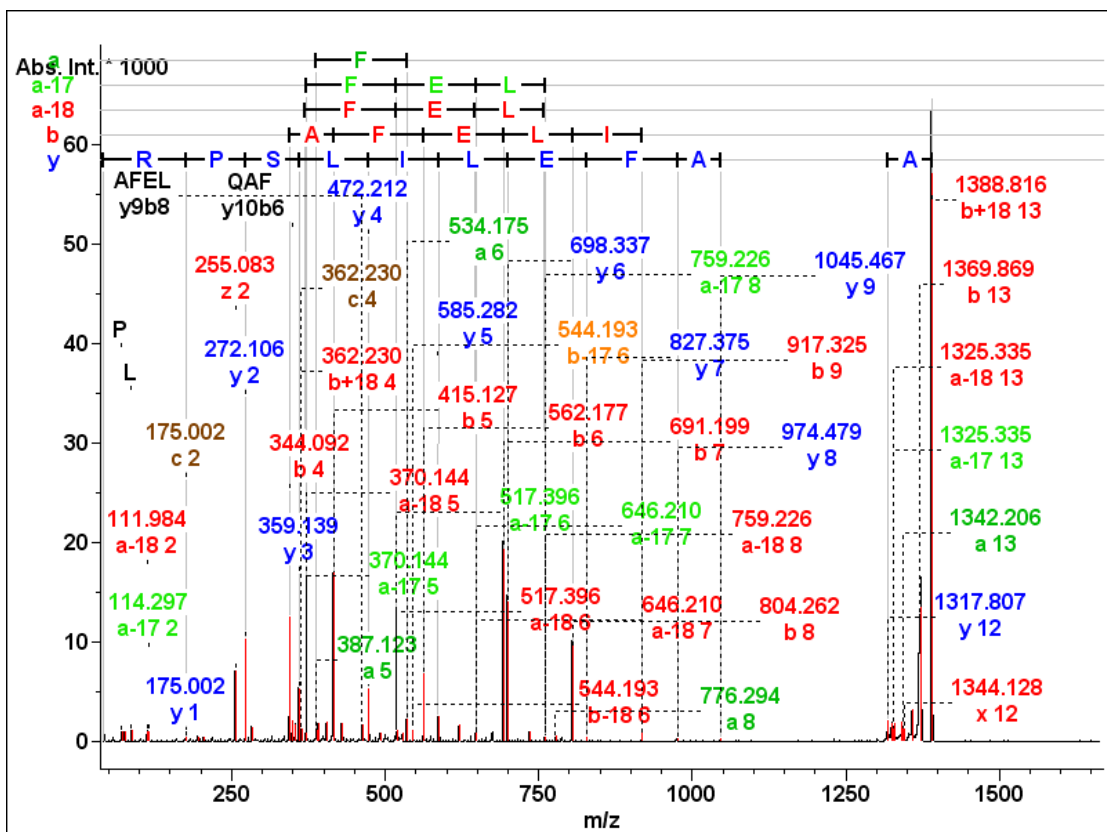
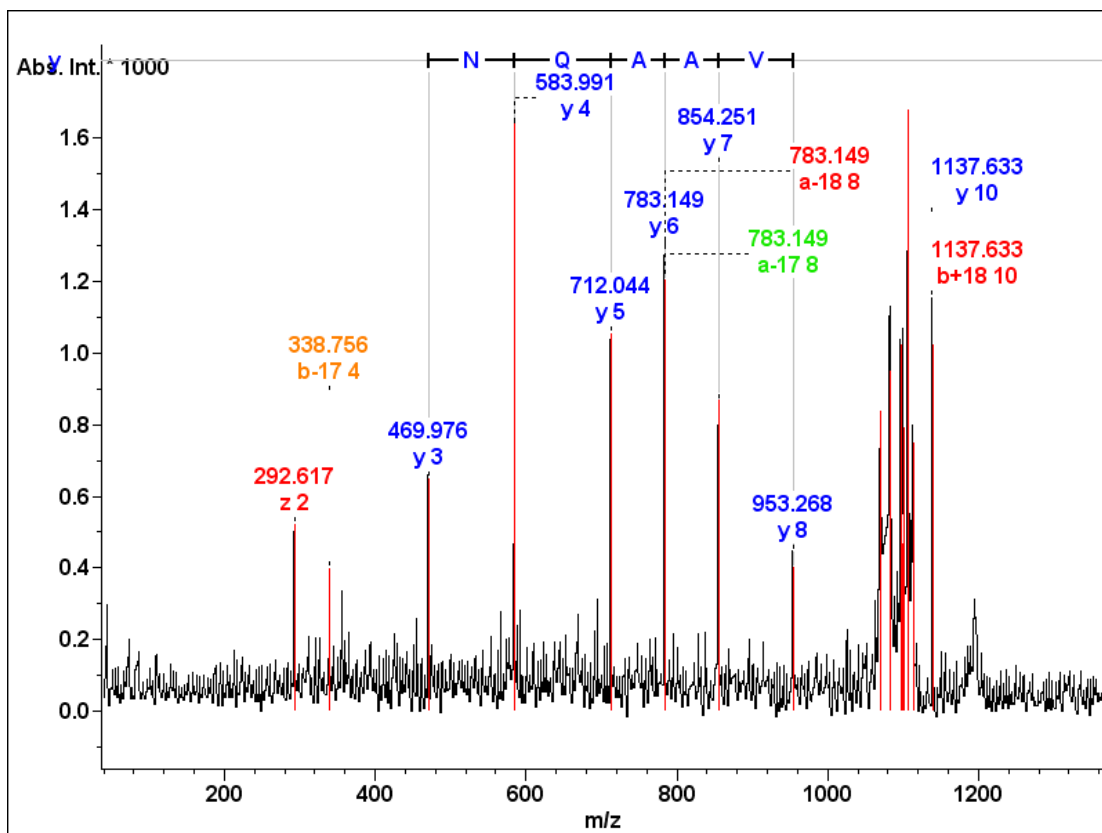


B

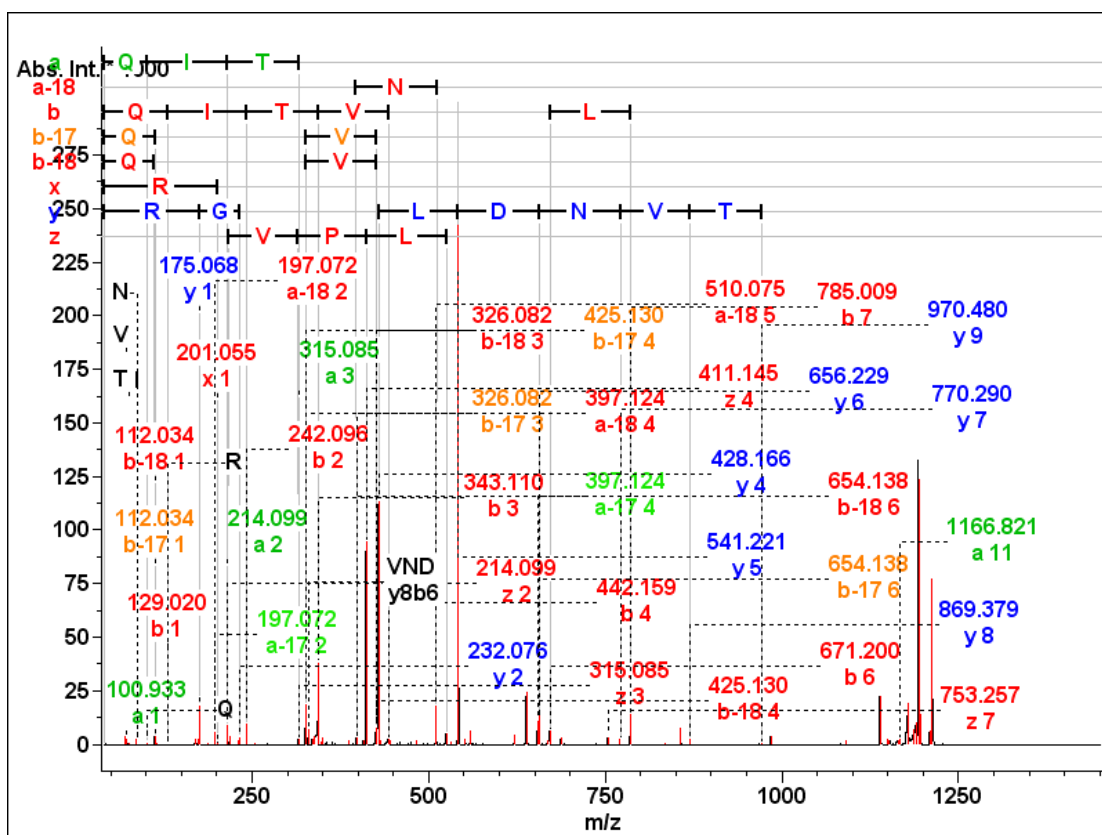


Supplementary Figure 1

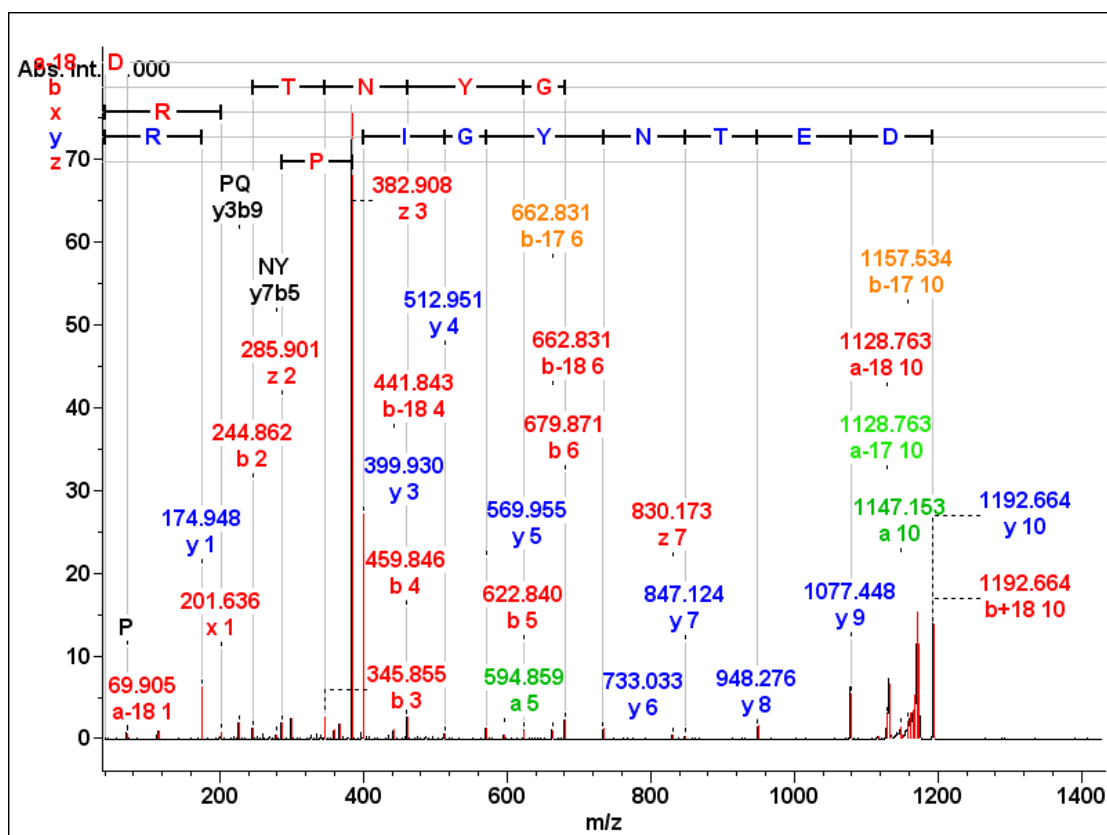
C



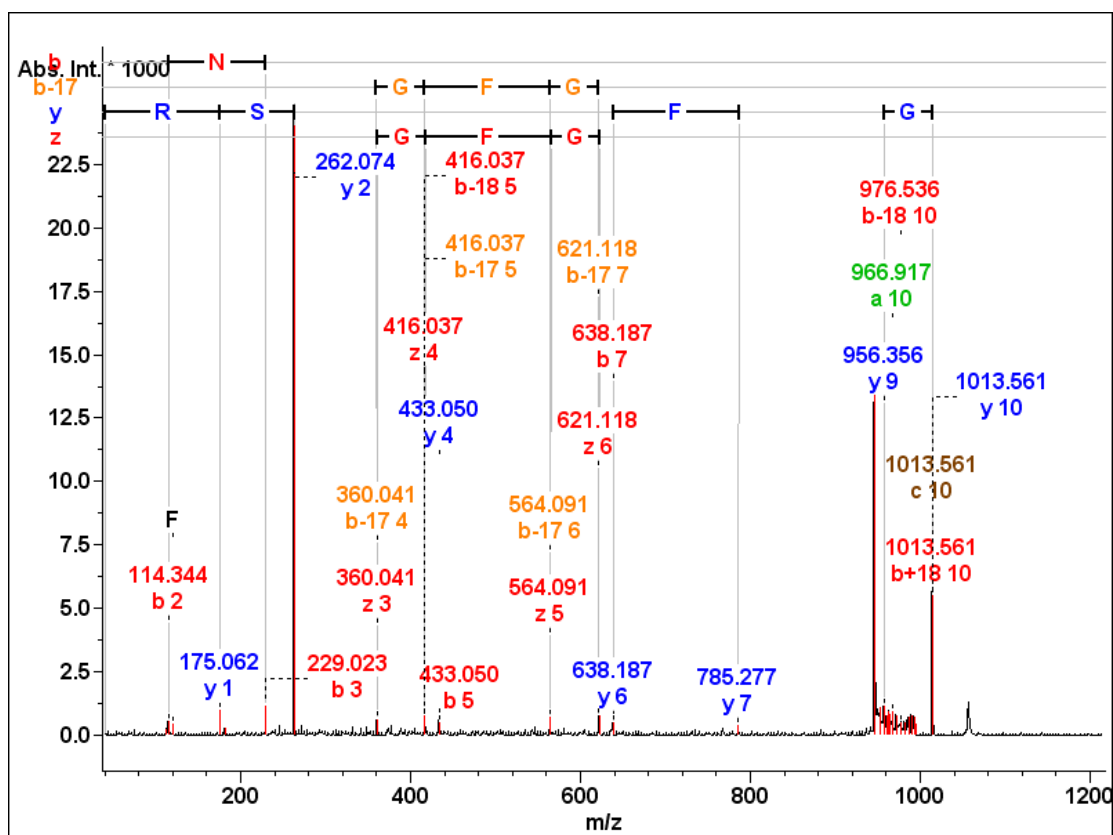
D



E



F



Supplementary Figure 1. Representative peptide sequences of identified proteins: (A) galectin-1, (B) stathmin, (C) triosephosphate isomerase, (D) peroxiredoxin-1, (E) guanine nucleotide-binding protein subunit beta-2-like 1 and (F) heterogeneous nuclear ribonucleoproteins A2/B1 through MALDI-TOF/TOF analysis.