

HPLC

Comp12

Analyzed: 18.02.09 22:43

Reported: 19.02.09 09:57
Processed: 19.02.09 09:57

Data Path: D:\WIN32APP\HSM\Christoph\DATA\2039\

Application: Christoph

Sample Name: ABN360

Injection from this vial: 1 of 1

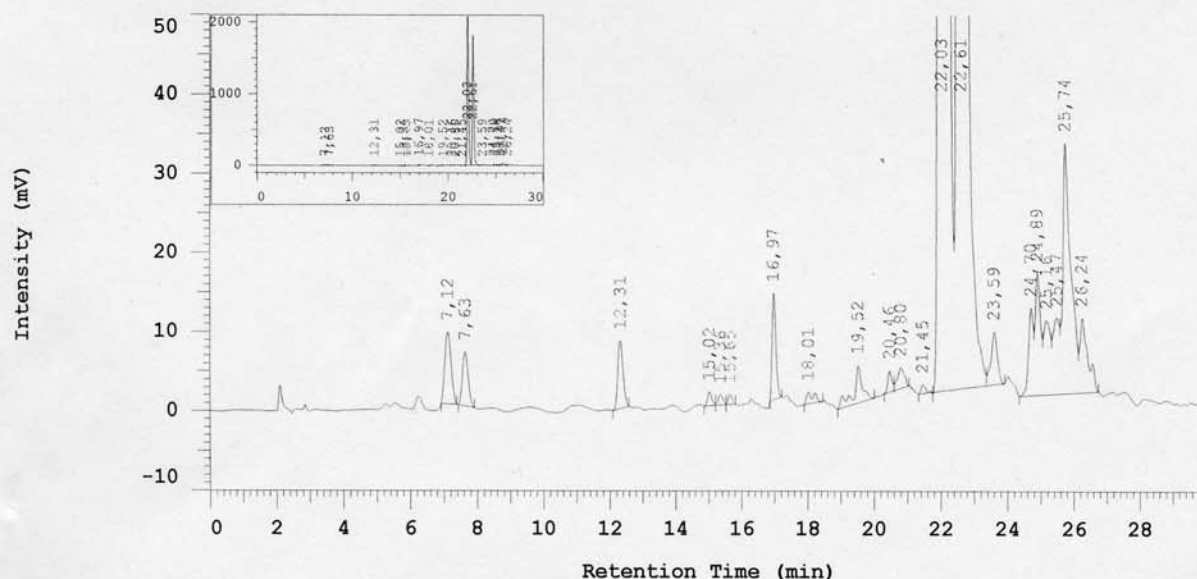
Series:2039

Vial Number: 5

Vial Type: UNK

Volume: 5,0 ul

Chrom Type: HPLC Channel : 1



Acquisition Method: Chromni

Blank Subtr Sample Name: ACN

Column Type: 010

Solvent A: Wasser + 0,05%TFA

Developed by: Jens

Solvent B: ACN + 0,05%TFA

No.	RT	Area	Conc 1	BC
1	7,12	115809	0,284	MC
2	7,63	79175	0,194	MC
3	12,31	92472	0,227	BB
4	15,02	15164	0,037	MC
5	15,36	12674	0,031	MC
6	15,65	10203	0,025	MC
7	16,97	105594	0,259	MC
8	18,01	19664	0,048	BB
9	19,52	81462	0,200	BB
10	20,46	22265	0,055	BB
11	20,80	37881	0,093	BB
12	21,45	9751	0,024	MC
13	22,03	21631801	53,084	MC
14	22,61	17192544	42,190	MC
15	23,59	89076	0,219	MC
16	24,70	106664	0,262	BV
17	24,89	170862	0,419	VV
18	25,16	132802	0,326	VV
19	25,47	130594	0,320	VV
20	25,74	535696	1,315	VV
21	26,24	157677	0,387	VB
		40749830	100,000	

HPLC

Analyzed: 21.01.09 20:26

Comp13a

Reported: 22.01.09 10:26
Processed: 22.01.09 10:26

Data Path: D:\WIN32APP\HSM\Christoph\DATA\1948\

Application: Christoph

Sample Name: ABN343A

Series:1948

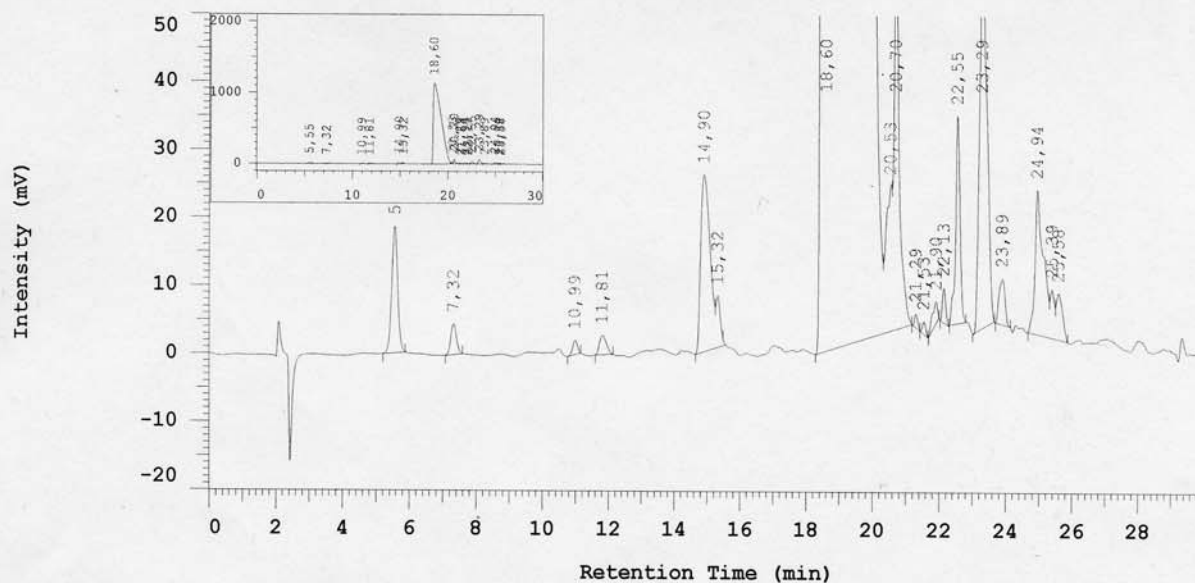
Vial Number: 2

Injection from this vial: 1 of 1

Vial Type: UNK

Volume: 5,0 ul

Chrom Type: HPLC Channel : 1



Acquisition Method: Chromni

Blank Subtr Sample Name: ACN

Column Type: 010

Developed by: Jens

Solvent A: Wasser + 0,05%TFA

Solvent B: ACN + 0,05%TFA

No.	RT	Area	Conc 1	BC
1	5,55	222002	0,332	MC
2	7,32	52260	0,078	MC
3	10,99	20609	0,031	BB
4	11,81	41891	0,063	MC
5	14,90	505764	0,757	BV
6	15,32	72001	0,108	MC
7	18,60	63179475	94,529	MC
8	20,53	273530	0,409	MC
9	20,70	645272	0,965	MC
10	21,29	12877	0,019	MC
11	21,53	12653	0,019	MC
12	21,90	34337	0,051	MC
13	22,13	34819	0,052	MC
14	22,55	274096	0,410	MC
15	23,29	848920	1,270	MC
16	23,89	82636	0,124	MC
17	24,94	366723	0,549	MC
18	25,39	64863	0,097	MC
19	25,58	91033	0,136	MC

66835761

100,000

Peak rejection level: 0

HPLC
Comp13c

Analyzed: 21.01.09 21:07

Reported: 22.01.09 09:39
Processed: 22.01.09 09:38

Data Path: D:\WIN32APP\HSM\Christoph\DATA\1949\

Application: Christoph

Sample Name: ABN343B

Series:1949

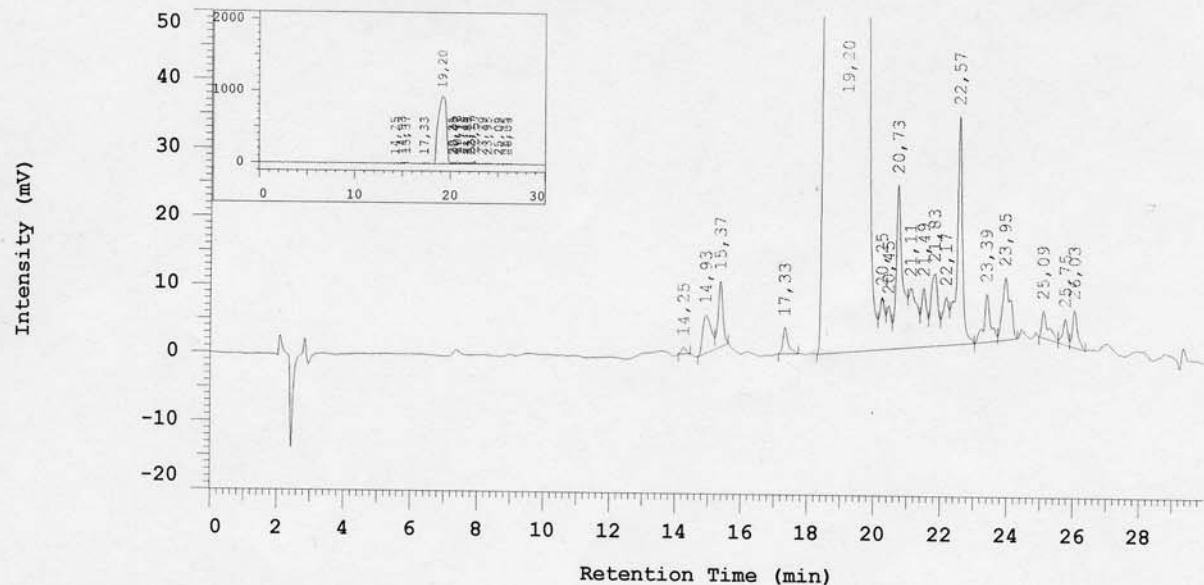
Vial Number: 3

Injection from this vial: 1 of 1

Vial Type: UNK

Volume: 5,0 ul

Chrom Type: HPLC Channel : 1



Acquisition Method: Chromni

Blank Subtr Sample Name: ACN

Column Type: 010

Solvent A: Wasser + 0,05%TFA

Developed by: Jens

Solvent B: ACN + 0,05%TFA

No.	RT	Area	Conc 1	BC
1	14,25	8992	0,016	BB
2	14,93	95903	0,172	BV
3	15,37	97381	0,175	VB
4	17,33	41601	0,075	MC
5	19,20	53673612	96,407	BV
6	20,25	87392	0,157	MC
7	20,45	64604	0,116	MC
8	20,73	316401	0,568	MC
9	21,11	157271	0,282	MC
10	21,49	99751	0,179	MC
11	21,83	161742	0,291	MC
12	22,17	89082	0,160	MC
13	22,57	379117	0,681	MC
14	23,39	99581	0,179	BB
15	23,95	152215	0,273	BB
16	25,09	54309	0,098	BB
17	25,75	37266	0,067	BB
18	26,03	57621	0,103	BB
		55673841	100,000	

Peak rejection level: 0

HPLC
Comp15a

Analyzed: 18.02.09 22:02

Reported: 19.02.09 09:55
Processed: 19.02.09 09:55

Data Path: D:\WIN32APP\HSM\Christoph\DATA\2038\

Application: Christoph

Sample Name: ABN359

Injection from this vial: 1 of 1

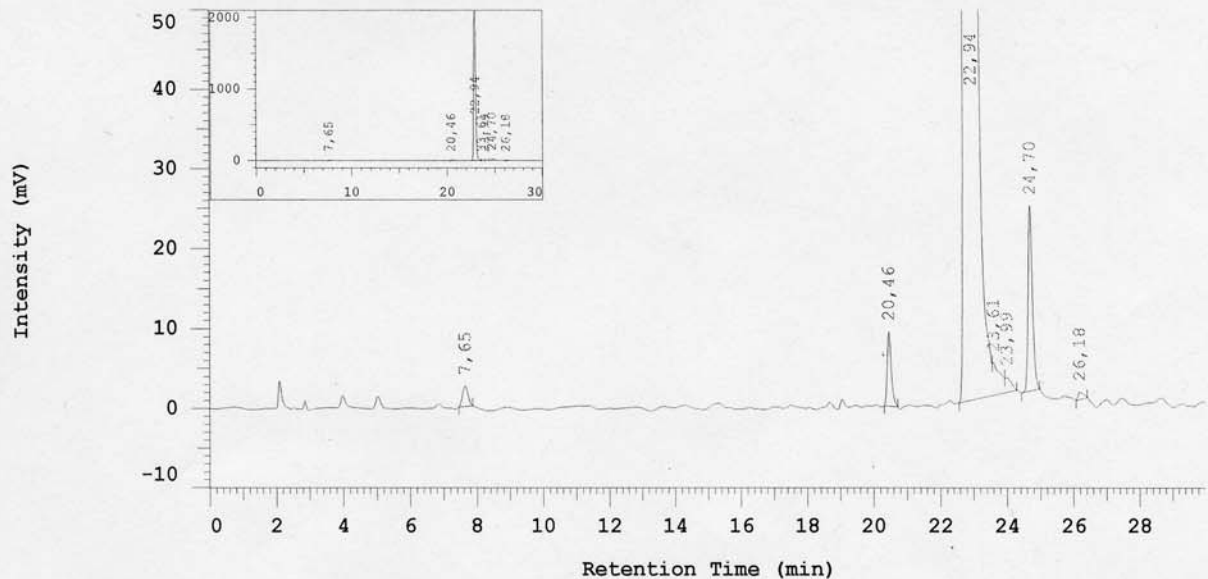
Series:2038

Vial Number: 4

Vial Type: UNK

Volume: 5,0 ul

Chrom Type: HPLC Channel : 1



Acquisition Method: Chromni

Blank Subtr Sample Name: ACN

Column Type: 010

Solvent A: Wasser + 0,05%TFA

Developed by: Jens

Solvent B: ACN + 0,05%TFA

No.	RT	Area	Conc 1	BC
1	7,65	29247	0,101	MC
2	20,46	77622	0,268	MC
3	22,94	28545011	98,571	MC
4	23,61	66603	0,230	MC
5	23,99	23908	0,083	MC
6	24,70	206393	0,713	BB
7	26,18	10141	0,035	BB
		28958925	100,000	

Peak rejection level: 0

HPLC Comp15c

Analyzed: 19.02.09 02:11

Reported: 19.02.09 10:23
Processed: 19.02.09 10:23

Data Path: D:\WIN32APP\HSM\Christoph\DATA\2044\

Application: Christoph

Series:2044

Sample Name: ABN365

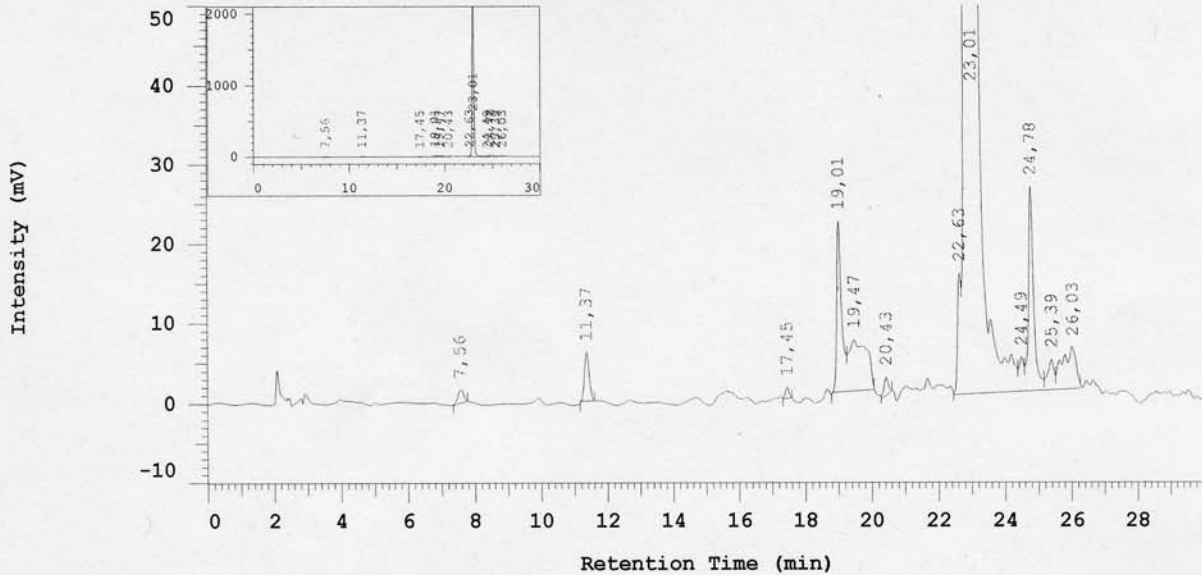
Vial Number: 9

Injection from this vial: 1 of 1

Vial Type: UNK

Volume: 5,0 ul

Chrom Type: HPLC Channel : 1



Acquisition Method: Chromni

Blank Subtr Sample Name: ACN

Column Type: 010

Developed by: Jens

Solvent A: Wasser + 0,05%TFA

Solvent B: ACN + 0,05%TFA

No.	RT	Area	Conc 1	BC
1	7,56	18893	0,072	MC
2	11,37	58846	0,224	BB
3	17,45	10089	0,038	BB
4	19,01	215426	0,821	MC
5	19,47	238688	0,910	MC
6	20,43	19877	0,076	BB
7	22,63	110558	0,421	MC
8	23,01	25046489	95,466	MC
9	24,49	42153	0,161	MC
10	24,78	275118	1,049	MC
11	25,39	50511	0,193	MC
12	26,03	149382	0,569	MC
		26236030	100,000	

Peak rejection level: 0

HPLC Comp16a

Analyzed: 19.02.09 00:06

Reported: 19.02.09 10:00
Processed: 19.02.09 10:00

Data Path: D:\WIN32APP\HSM\Christoph\DATA\2041\

Application: Christoph

Sample Name: ABN362A

Injection from this vial: 1 of 1

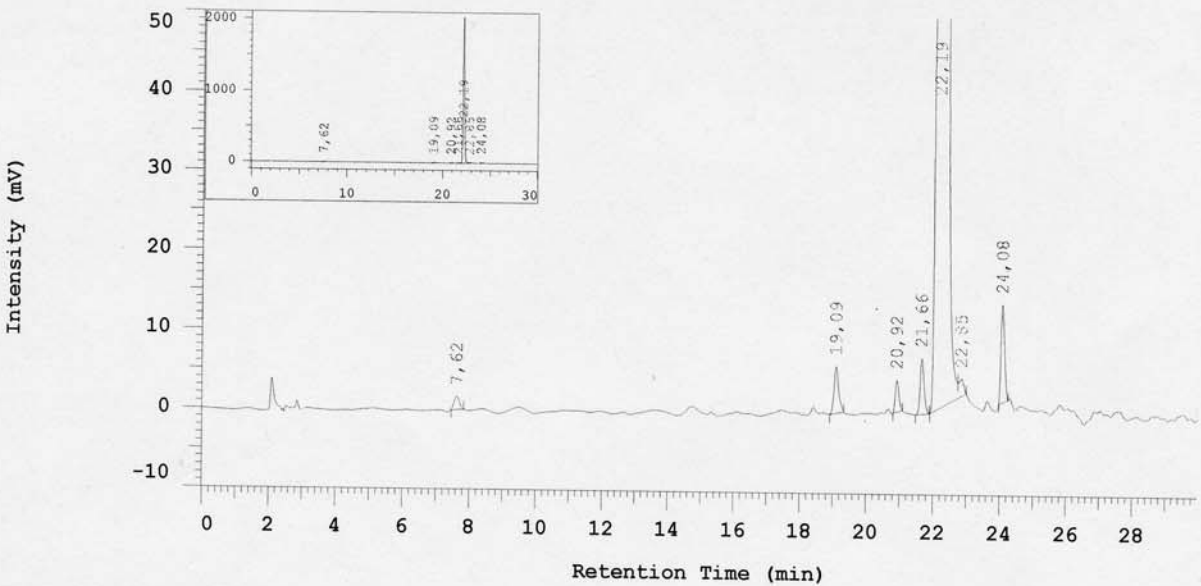
Series:2041

Vial Number: 7

Vial Type: UNK

Volume: 5,0 ul

Chrom Type: HPLC Channel : 1



Acquisition Method: Chromni

Blank Subtr Sample Name: ACN

Column Type: 010

Solvent A: Wasser + 0,05%TFA

Developed by: Jens

Solvent B: ACN + 0,05%TFA

No.	RT	Area	Conc 1	BC
1	7,62	17957	0,090	MC
2	19,09	54937	0,276	BB
3	20,92	29343	0,148	MC
4	21,66	56234	0,283	BB
5	22,19	19615564	98,642	BV
6	22,85	21434	0,108	MC
7	24,08	90155	0,453	MC
		19885624	100,000	

Peak rejection level: 0

HPLC

Comp16b

Analyzed: 19.02.09 01:29

Reported: 19.02.09 10:03
Processed: 19.02.09 10:03

Data Path: D:\WIN32APP\HSM\Christoph\DATA\2043\

Application: Christoph

Series:2043

Sample Name: ABN362B

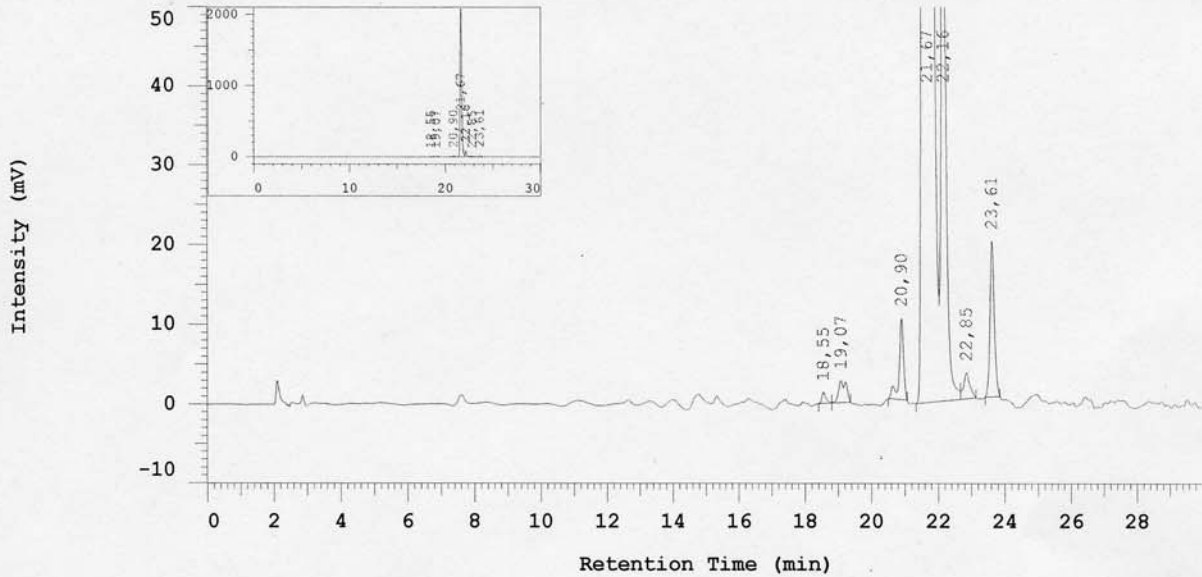
Vial Number: 8

Injection from this vial: 1 of 1

Vial Type: UNK

Volume: 5,0 ul

Chrom Type: HPLC Channel : 1



Acquisition Method: Chromni

Blank Subtr Sample Name: ACN

Column Type: 010

Solvent A: Wasser + 0,05%TFA

Developed by: Jens

Solvent B: ACN + 0,05%TFA

No.	RT	Area	Conc 1	BC
1	18,55	12020	0,051	MC
2	19,07	44337	0,190	MC
3	20,90	94887	0,406	MC
4	21,67	22186160	95,014	MC
5	22,16	800018	3,426	MC
6	22,85	42206	0,181	MC
7	23,61	170795	0,731	MC
		23350423	100,000	

Peak rejection level: 0

HPLC
Comp16c

Analyzed: 25.02.09 21:47

Reported: 26.02.09 09:43
Processed: 26.02.09 09:43

Data Path: D:\WIN32APP\HSM\Christoph\DATA\2060\

Application: Christoph

Sample Name: ABN368A

Injection from this vial: 1 of 1

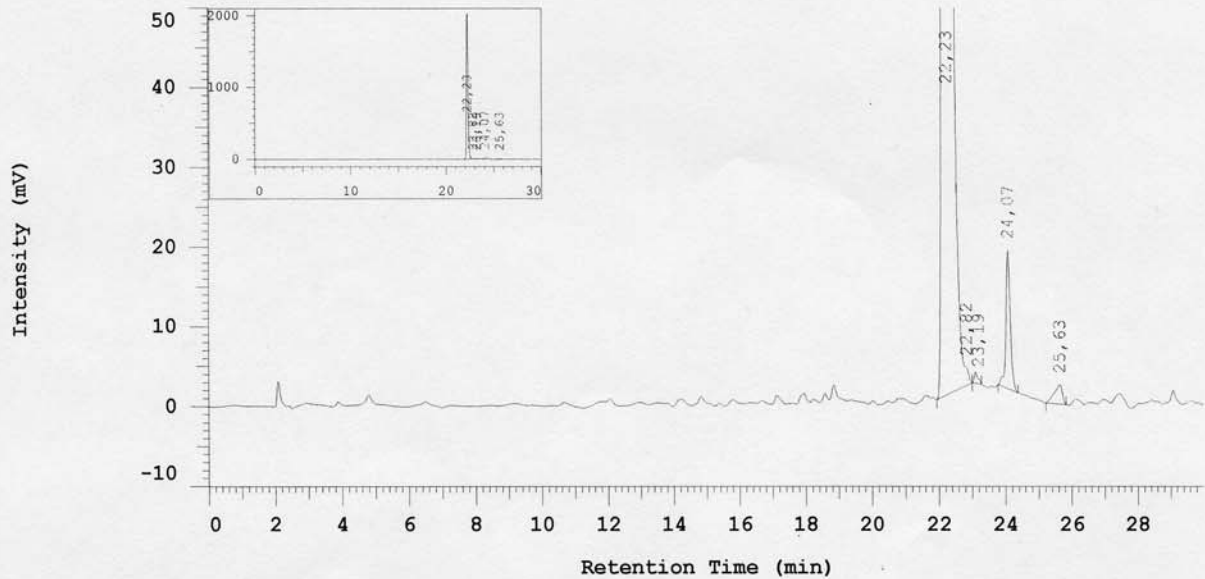
Series:2060

Vial Number: 3

Vial Type: UNK

Volume: 5,0 ul

Chrom Type: HPLC Channel : 1



Acquisition Method: Chromni

Blank Subtr Sample Name: ACN

Column Type: 010

Solvent A: Wasser + 0,05%TFA

Developed by: Jens

Solvent B: ACN + 0,05%TFA

No.	RT	Area	Conc 1	BC
1	22,23	19302174	98,126	MC
2	22,82	161786	0,822	MC
3	23,19	10380	0,053	MC
4	24,07	155474	0,790	BB
5	25,63	40918	0,208	MC
		19670732	100,000	

Peak rejection level: 0

HPLC Comp16d

Analyzed: 25.02.09 22:28

Reported: 26.02.09 09:49
Processed: 26.02.09 09:49

Data Path: D:\WIN32APP\HSM\Christoph\DATA\2061\

Application: Christoph

Sample Name: ABN368B

Injection from this vial: 1 of 1

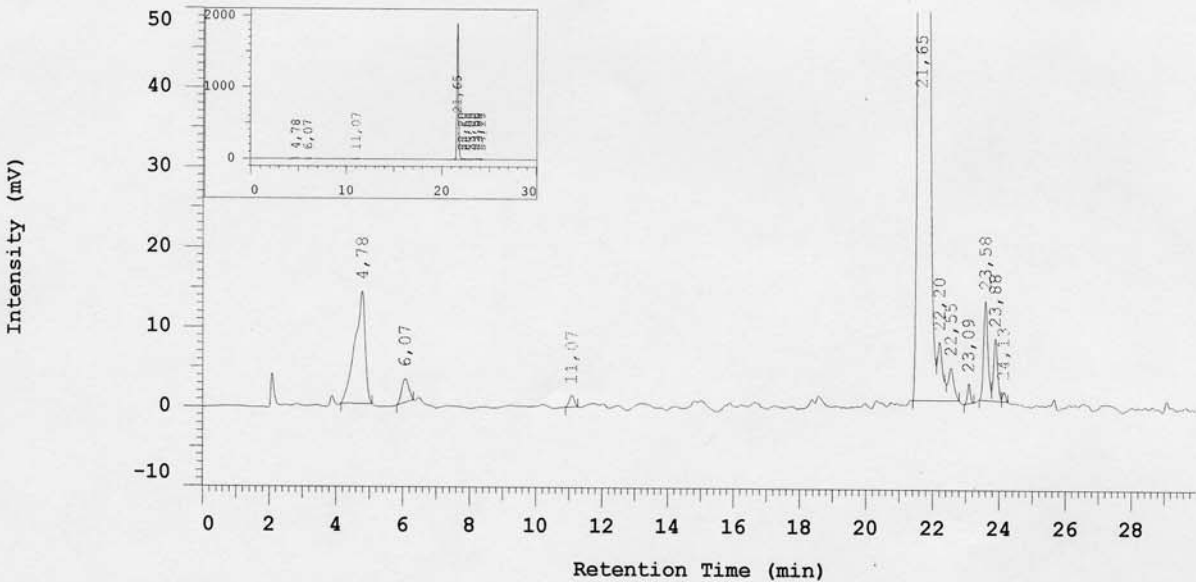
Series:2061

Vial Number: 4

Vial Type: UNK

Volume: 5,0 ul

Chrom Type: HPLC Channel : 1



Acquisition Method: Chromni

Blank Subtr Sample Name: ACN

Column Type: 010

Solvent A: Wasser + 0,05%TFA

Developed by: Jens

Solvent B: ACN + 0,05%TFA

No.	RT	Area	Conc 1	BC
1	4,78	298784	1,593	MC
2	6,07	41986	0,224	MC
3	11,07	14559	0,078	MC
4	21,65	18077286	96,377	MC
5	22,20	77674	0,414	MC
6	22,55	49441	0,264	MC
7	23,09	14126	0,075	MC
8	23,58	110054	0,587	MC
9	23,88	65154	0,347	MC
10	24,13	7860	0,042	MC
		18756924	100,000	

Peak rejection level: 0

HPLC

Comp17a

Analyzed: 29.04.08 20:56

Reported: 30.04.08 08:48
Processed: 30.04.08 08:47

Data Path: D:\WIN32APP\HSM\Christoph\DATA\1231\

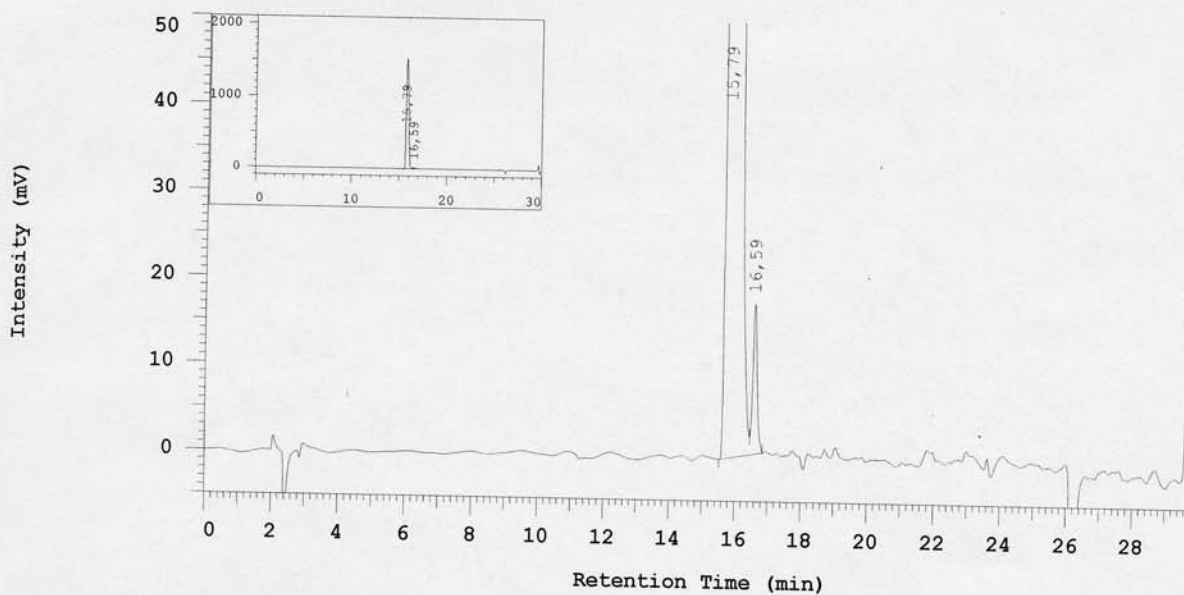
Application: Christoph

Sample Name: ABN 148R

Injection from this vial: 1 of 1

Series:1231
Vial Number: 5
Vial Type: UNK
Volume: 5,0 ul

Chrom Type: HPLC Channel : 1



Acquisition Method: Chromni

Blank Subtr Sample Name: ACN

Column Type: 010

Solvent A: Wasser + 0,05%TFA

Developed by: Jens

Solvent B: ACN + 0,05%TFA

No.	RT	Area	Conc 1	BC
1	15,79	24904990	99,379	BV
2	16,59	155516	0,621	MC
		25060506	100,000	

Peak rejection level: 0

HPLC

Comp17b

Analyzed: 12.03.08 22:22

Reported: 13.03.08 09:58
Processed: 13.03.08 09:58

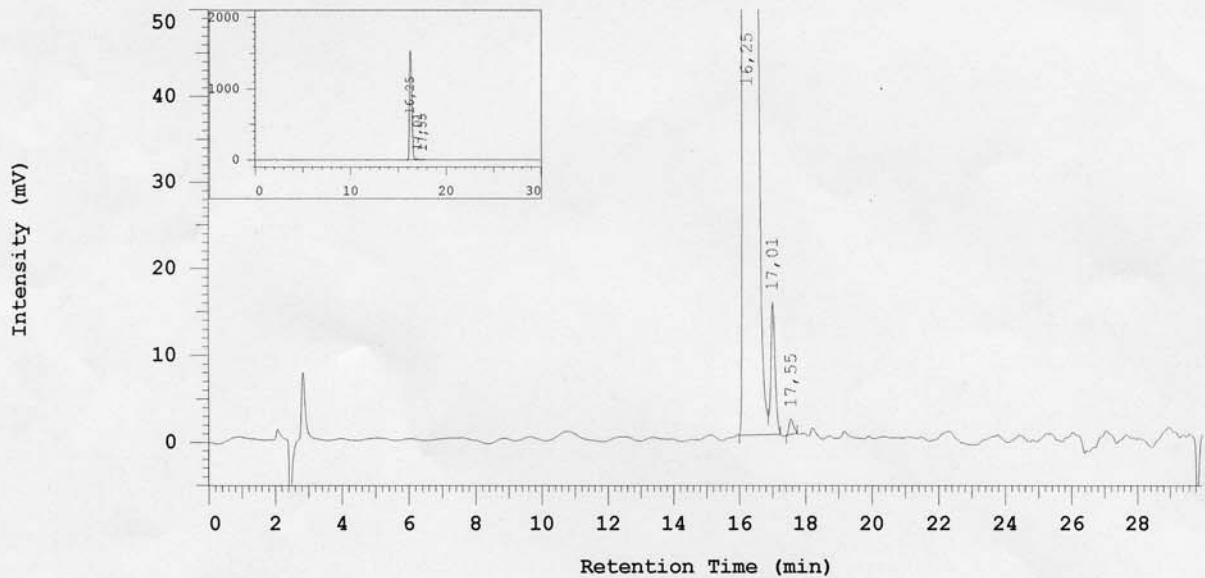
Data Path: D:\WIN32APP\HSM\Christoph\DATA\1084\
Application: Christoph

Sample Name: ABN149

Injection from this vial: 1 of 1

Series:1084
Vial Number: 5
Vial Type: UNK
Volume: 5,0 ul

Chrom Type: HPLC Channel : 1



Acquisition Method: Chromni

Blank Subtr Sample Name: ACN

Column Type: 010

Solvent A: Wasser + 0,05%TFA

Developed by: Jens

Solvent B: ACN + 0,05%TFA

No.	RT	Area	Conc 1	BC
1	16,25	23863116	99,371	MC
2	17,01	134781	0,561	MC
3	17,55	16298	0,068	MC
		24014195	100,000	

Peak rejection level: 0

HPLC Comp17c

Analyzed: 19.03.08 19:43

Reported: 20.03.08 10:47
Processed: 20.03.08 10:47

Data Path: D:\WIN32APP\HSM\Christoph\DATA\1101\

Application: Christoph

Sample Name: ABN150

Injection from this vial: 1 of 1

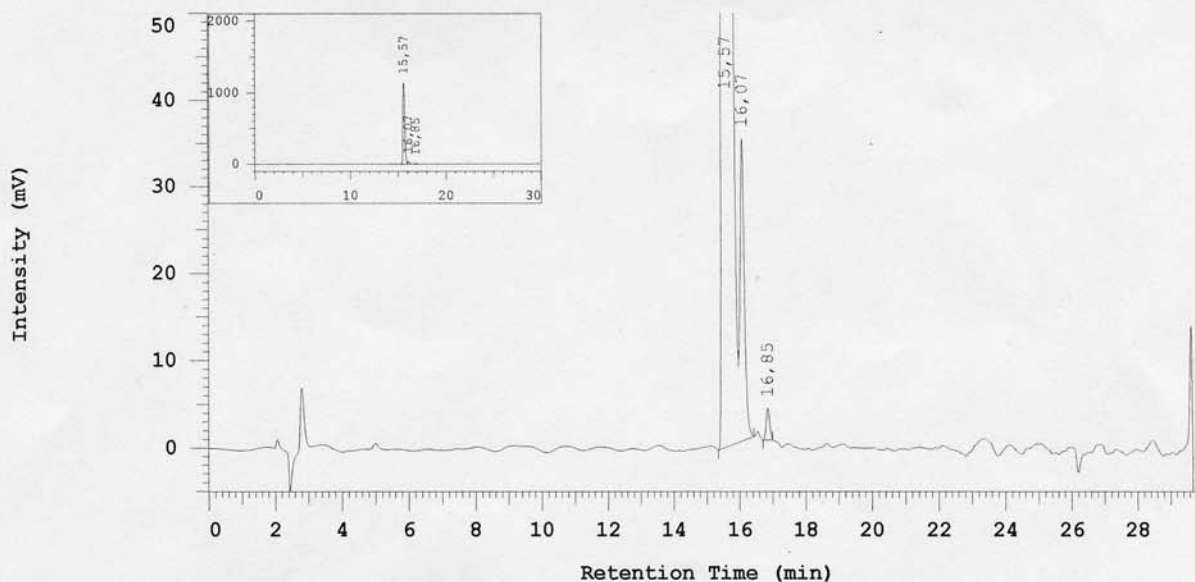
Series:1101

Vial Number: 2

Vial Type: UNK

Volume: 5,0 ul

Chrom Type: HPLC Channel : 1



Acquisition Method: Chromni

Blank Subtr Sample Name: ACN

Column Type: 010

Solvent A: Wasser + 0,05%TFA

Developed by: Jens

Solvent B: ACN + 0,05%TFA

No.	RT	Area	Conc 1	BC
1	15,57	14092465	97,582	MC
2	16,07	322761	2,235	MC
3	16,85	26492	0,183	MC
		14441718	100,000	

Peak rejection level: 0

HPLC

Comp17d

Analyzed: 19.03.08 20:25

Reported: 20.03.08 10:50

Processed: 20.03.08 10:50

Data Path: D:\WIN32APP\HSM\Christoph\DATA\1102\

Application: Christoph

Series:1102

Sample Name: ABN151

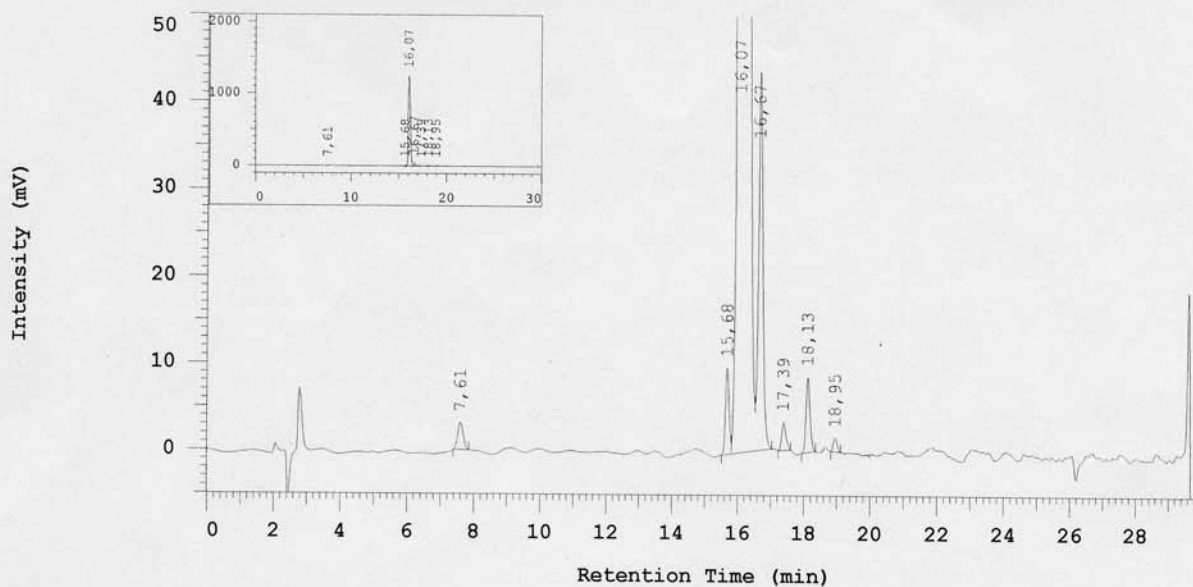
Vial Number: 3

Injection from this vial: 1 of 1

Vial Type: UNK

Volume: 5,0 ul

Chrom Type: HPLC Channel : 1



Acquisition Method: Chromni

Blank Subtr Sample Name: ACN

Column Type: 010

Developed by: Jens

Solvent A: Wasser + 0,05%TFA

Solvent B: ACN + 0,05%TFA

No.	RT	Area	Conc 1	BC
1	7,61	35416	0,202	MC
2	15,68	75601	0,430	MC
3	16,07	16944641	96,454	MC
4	16,67	398803	2,270	MC
5	17,39	29035	0,165	MC
6	18,13	71528	0,407	MC
7	18,95	12565	0,072	MC
		17567589	100,000	

Peak rejection level: 0

HPLC Comp18a

Analyzed: 06.04.09 23:12

Reported: 07.04.09 13:52
Processed: 07.04.09 13:52

Data Path: D:\WIN32APP\HSM\Chromni\DATA\0081\

Application: Chromni

Sample Name: ABN 396

Injection from this vial: 1 of 1

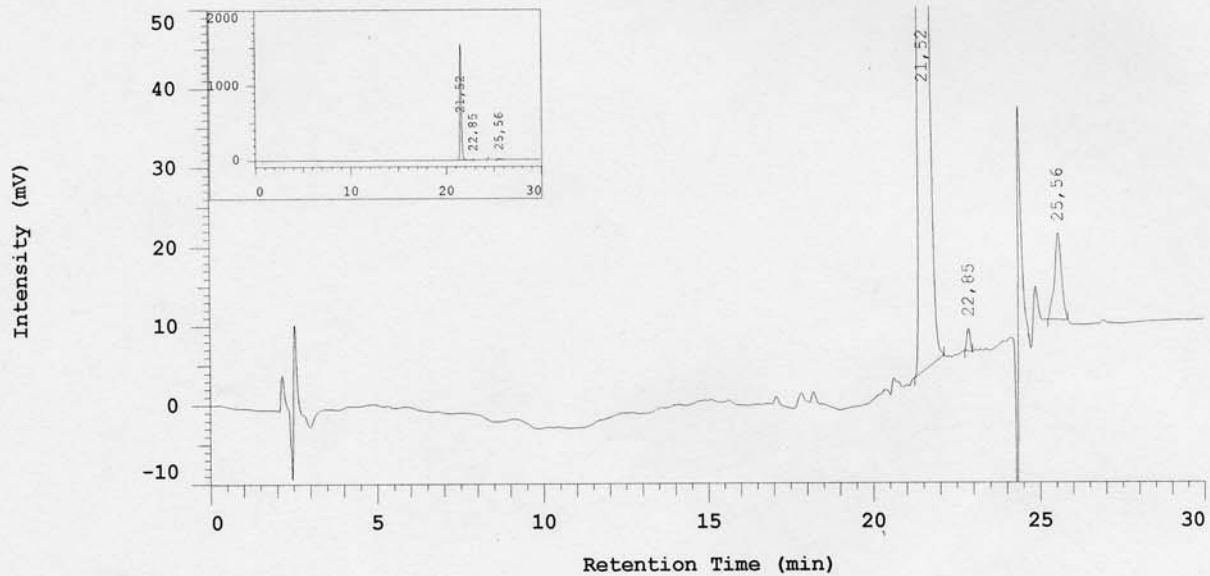
Series:0081

Vial Number: 5

Vial Type: UNK

Volume: 5,0 ul

Chrom Type: HPLC Channel : 1



Acquisition Method: Chromni MeOH

Blank Subtr Sample Name: MeOH

Column Type: 010

Solvent A: Wasser + 0,05%TFA

Developed by: Christian

Solvent C: MeOH +0,05% TFA

No.	RT	Area	Conc 1	BC
1	21,52	14414144	98,781	MC
2	22,85	19417	0,133	MC
3	25,56	158471	1,086	MC
		14592032	100,000	

Peak rejection level: 0

HPLC Comp18b

Analyzed: 06.04.09 23:59

Reported: 19.01.10 14:33
Processed: 19.01.10 14:33

Data Path: D:\WIN32APP\HSM\Chromni\DATA\0082\

Application: Chromni

Sample Name: ABN 397

Injection from this vial: 1 of 1

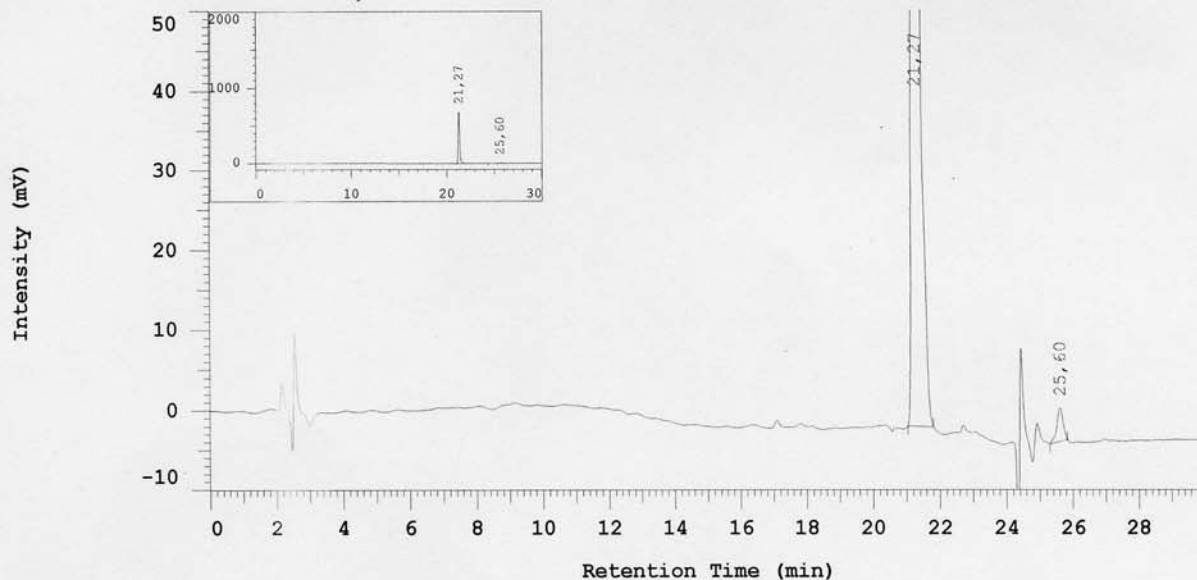
Series:0082

Vial Number: 6

Vial Type: UNK

Volume: 5,0 ul

Chrom Type: HPLC Channel : 1



Acquisition Method: Chromni MeOH

Blank Subtr Sample Name: MeOH

Column Type: 010

Solvent A: Wasser + 0,05%TFA

Developed by: Christian

Solvent C: MeOH +0,05% TFA

No.	RT	Area	Conc 1	BC
1	21,27	6244803	99,141	MC
2	25,60	54136	0,859	MC
		6298939	100,000	

Peak rejection level: 0

HPLC Comp18c

Analyzed: 12.03.09 02:20

Reported: 12.03.09 11:06
Processed: 12.03.09 11:06

Data Path: D:\WIN32APP\HSM\Chromni\DATA\0014\

Application: Chromni

Sample Name: ABN375

Injection from this vial: 1 of 1

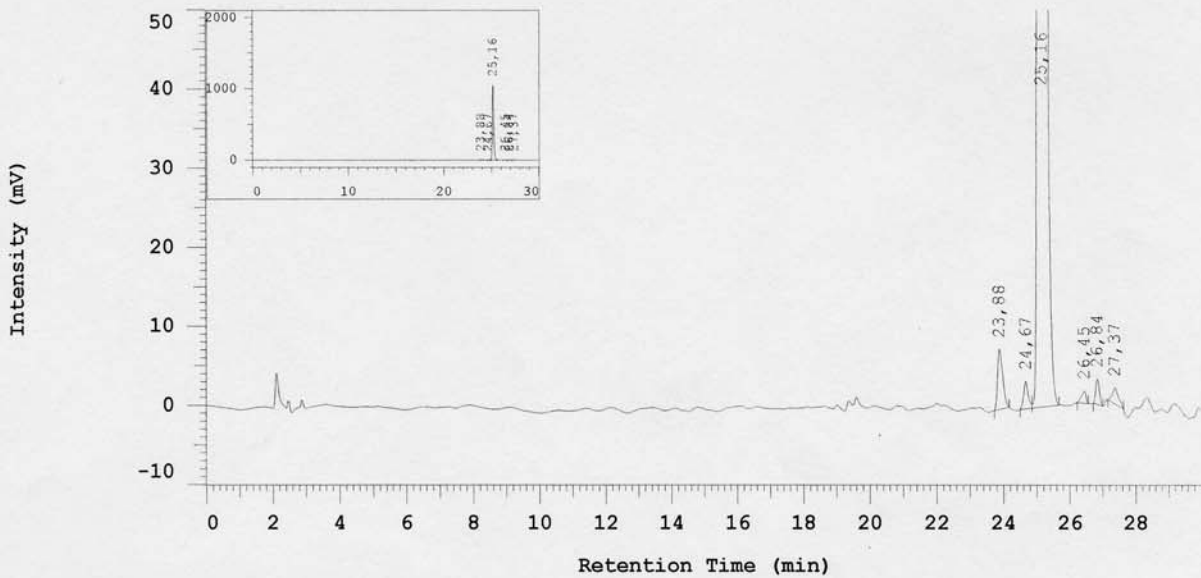
Series:0014

Vial Number: 11

Vial Type: UNK

Volume: 5,0 ul

Chrom Type: HPLC Channel : 1



Acquisition Method: Chromni

Blank Subtr Sample Name: ACN

Column Type: 010

Solvent A: Wasser + 0,05%TFA

Developed by: Jens

Solvent B: ACN + 0,05%TFA

No.	RT	Area	Conc 1	BC
1	23,88	80786	0,806	MC
2	24,67	32190	0,321	MC
3	25,16	9839170	98,214	MC
4	26,45	13926	0,139	MC
5	26,84	24459	0,244	MC
6	27,37	27579	0,275	MC
		10018110	100,000	

Peak rejection level: 0

HPLC Comp18d

Analyzed: 12.03.09 03:01

Reported: 12.03.09 11:10
Processed: 12.03.09 11:10

Data Path: D:\WIN32APP\HSM\Chromni\DATA\0015\

Application: Chromni

Sample Name: ABN376

Injection from this vial: 1 of 1

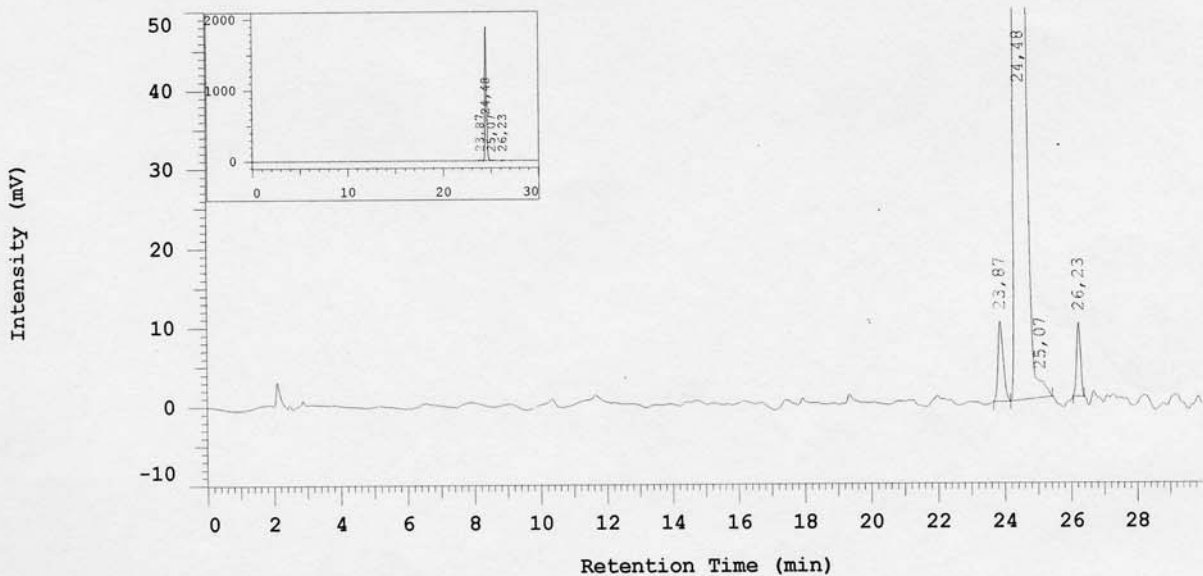
Series:0015

Vial Number: 12

Vial Type: UNK

Volume: 5,0 ul

Chrom Type: HPLC Channel : 1



Acquisition Method: Chromni

Blank Subtr Sample Name: ACN

Column Type: 010

Solvent A: Wasser + 0,05%TFA

Developed by: Jens

Solvent B: ACN + 0,05%TFA

No.	RT	Area	Conc 1	BC
1	23,87	107767	0,569	BB
2	24,48	18626544	98,391	MC
3	25,07	121745	0,643	MC
4	26,23	75151	0,397	MC
		18931207	100,000	

Peak rejection level: 0

HPLC Comp19a

Analyzed: 07.05.08 20:18

Reported: 19.01.10 14:55
Processed: 19.01.10 14:55

Data Path: D:\WIN32APP\HSM\Christoph\DATA\1242\

Application: Christoph

Sample Name: ABN166R

Injection from this vial: 1 of 1

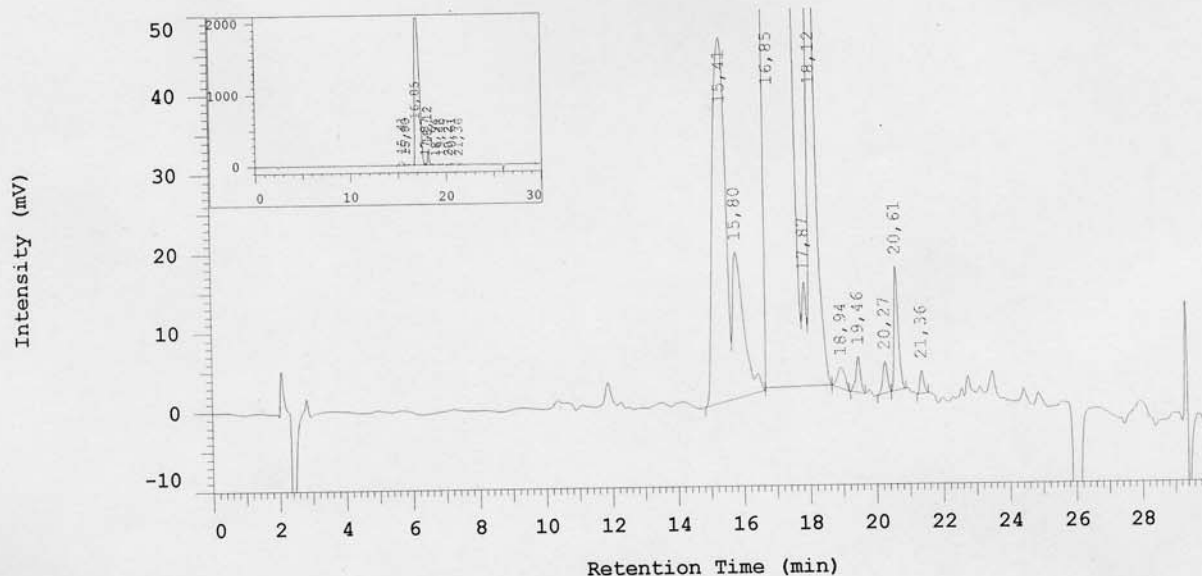
Series:1242

Vial Number: 3

Vial Type: UNK

Volume: 5,0 ul

Chrom Type: HPLC Channel : 1



Acquisition Method: Chromni

Blank Subtr Sample Name: ACN

Column Type: 010

Solvent A: Wasser + 0,05%TFA

Developed by: Jens

Solvent B: ACN + 0,05%TFA

No.	RT	Area	Conc 1	BC
1	15,41	1212560	1,700	MC
2	15,80	434208	0,609	MC
3	16,85	67342995	94,430	MC
4	17,87	117177	0,164	MC
5	18,12	1930957	2,708	MC
6	18,94	41542	0,058	MC
7	19,46	42757	0,060	MC
8	20,27	37713	0,053	MC
9	20,61	133261	0,187	MC
10	21,36	22005	0,031	BB
		71315175	100,000	

Peak rejection level: 0

HPLC

Comp19b

Analyzed: 07.05.08 20:59

Reported: 19.01.10 14:53
Processed: 19.01.10 14:53

Data Path: D:\WIN32APP\HSM\Christoph\DATA\1243\

Application: Christoph

Sample Name: ABN 167R

Injection from this vial: 1 of 1

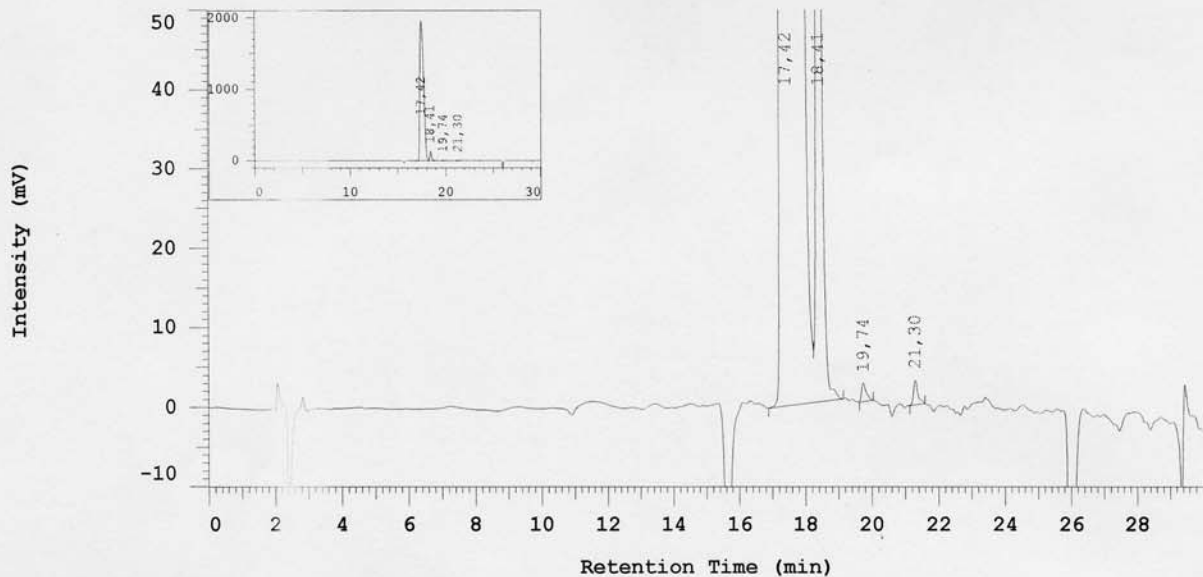
Series:1243

Vial Number: 4

Vial Type: UNK

Volume: 5,0 ul

Chrom Type: HPLC Channel : 1



Acquisition Method: Chromni

Blank Subtr Sample Name: ACN

Column Type: 010

Solvent A: Wasser + 0,05%TFA

Developed by: Jens

Solvent B: ACN + 0,05%TFA

No.	RT	Area	Conc 1	BC
1	17,42	51184358	97,296	MC
2	18,41	1371844	2,608	MC
3	19,74	22109	0,042	MC
4	21,30	28286	0,054	MC
		52606597	100,000	

Peak rejection level: 0

HPLC Comp19c

Analyzed: 31.07.08 16:08

Reported: 01.08.08 09:20
Processed: 01.08.08 09:19

Data Path: D:\WIN32APP\HSM\Christoph\DATA\1508\

Application: Christoph

Sample Name: ABN 255

Injection from this vial: 1 of 1

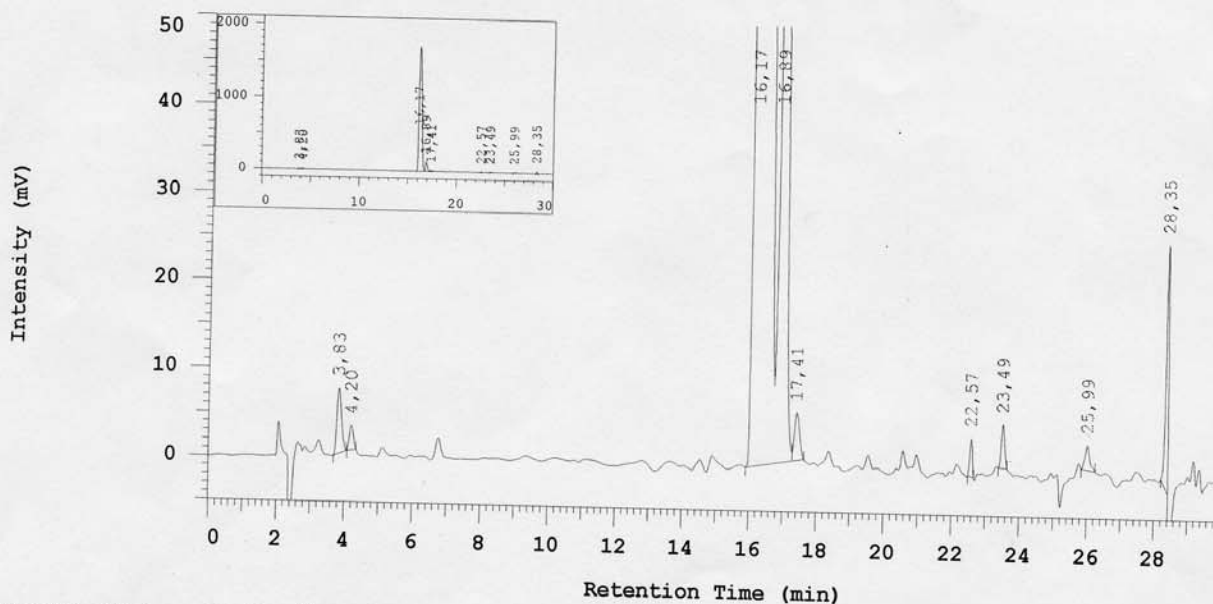
Series:1508

Vial Number: 28

Vial Type: UNK

Volume: 5,0 ul

Chrom Type: HPLC Channel : 1



Acquisition Method: Chromni

Blank Subtr Sample Name: ACN

Column Type: 010

Solvent A: Wasser + 0,05%TFA

Developed by: Jens

Solvent B: ACN + 0,05%TFA

No.	RT	Area	Conc 1	BC
1	3,83	66993		
2	4,20	22121	0,195	MC
3	16,17	32388060	0,064	MC
4	16,89	1648957	94,152	MC
5	17,41	57644	4,794	MC
6	22,57	22151	0,168	MC
7	23,49	32926	0,064	MC
8	25,99	26522	0,096	MC
9	28,35	134198	0,077	MC
			0,390	MC
		34399572	100,000	

Peak rejection level: 0

HPLC Comp19d

Analyzed: 17.04.08 01:48

Reported: 17.04.08 09:48

Processed: 17.04.08 09:48

Data Path: D:\WIN32APP\HSM\Christoph\DATA\1202\

Application: Christoph

Sample Name: ABN173

Series:1202

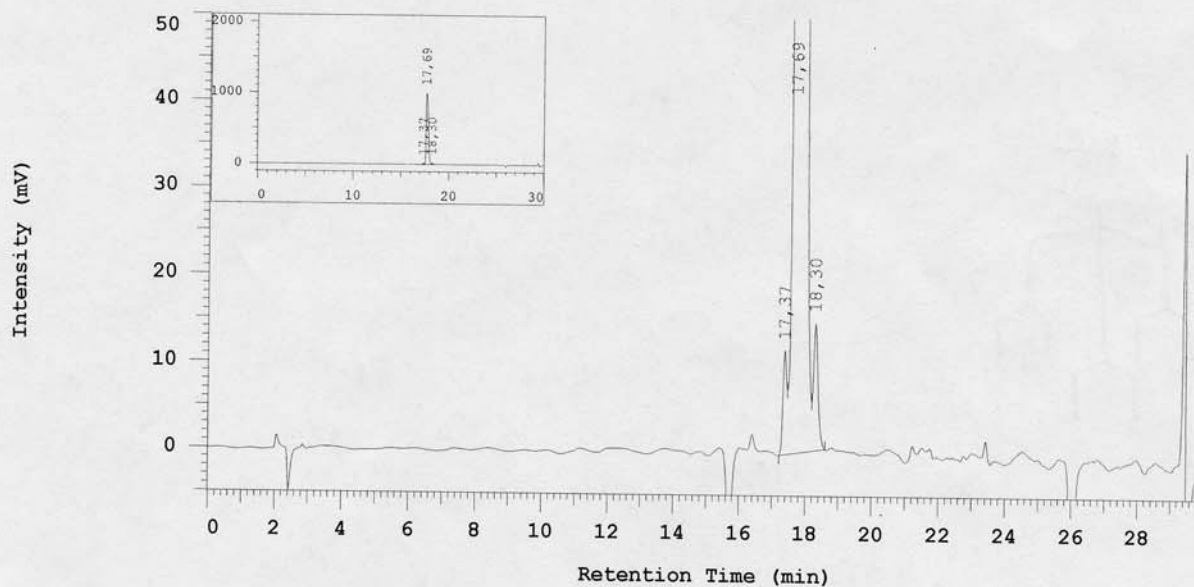
Vial Number: 8

Injection from this vial: 1 of 1

Vial Type: UNK

Volume: 5,0 ul

Chrom Type: HPLC Channel : 1



Acquisition Method: Chromni

Blank Subtr Sample Name: ACN

Column Type: 010

Developed by: Jens

Solvent A: Wasser + 0,05%TFA

Solvent B: ACN + 0,05%TFA

No.	RT	Area	Conc 1	BC
1	17,37	90624	0,589	MC
2	17,69	15153937	98,467	MC
3	18,30	145328	0,944	MC
		15389889	100,000	

Peak rejection level: 0

HPLC

Comp20a

Analyzed: 03.09.09 04:38

Reported: 19.01.10 14:25
Processed: 19.01.10 14:24

Data Path: D:\WIN32APP\HSM\Chromni\DATA\0585\

Application: Chromni

Sample Name: ABN469A

Injection from this vial: 1 of 1

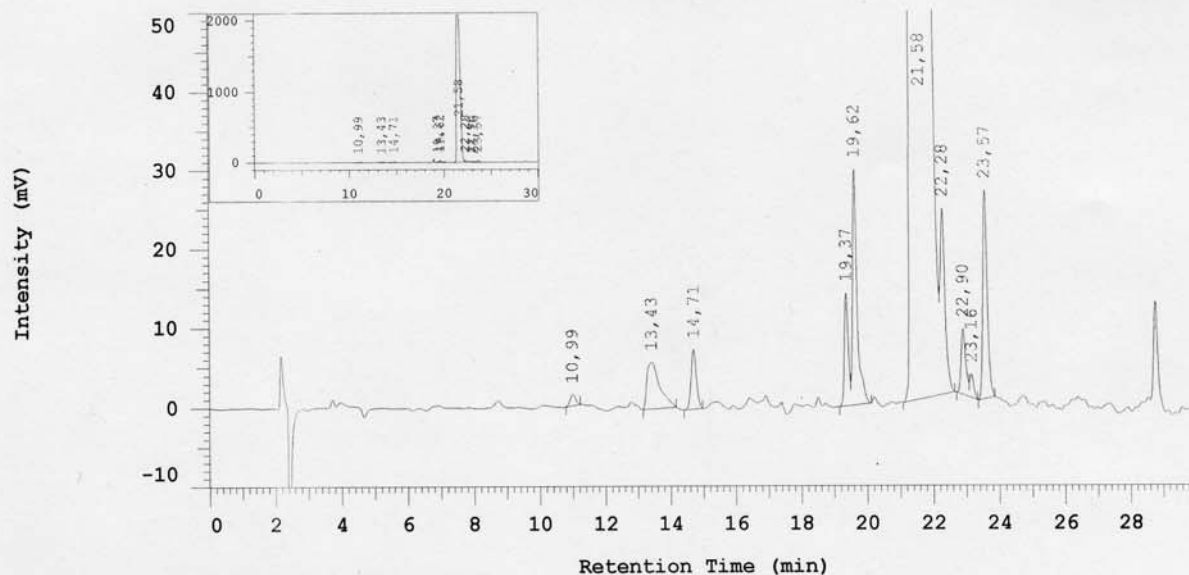
Series:0585

Vial Number: 13

Vial Type: UNK

Volume: 5,0 ul

Chrom Type: HPLC Channel : 1



Acquisition Method: Chromni

Blank Subtr Sample Name: ACN

Column Type: 010

Solvent A: Wasser + 0,05%TFA

Developed by: Jens

Solvent B: ACN + 0,05%TFA

No.	RT	Area	Conc 1	BC
1	10,99	15856	0,028	MC
2	13,43	157245	0,278	MC
3	14,71	82653	0,146	BB
4	19,37	114533	0,203	MC
5	19,62	281061	0,497	MC
6	21,58	55300294	97,798	MC
7	22,28	251292	0,444	MC
8	22,90	77602	0,137	MC
9	23,16	24090	0,043	MC
10	23,57	240642	0,426	BB
		56545268	100,000	

Peak rejection level: 0

HPLC Comp20b

Analyzed: 15.10.09 18:46

Reported: 16.10.09 13:30
Processed: 16.10.09 13:30

Data Path: D:\WIN32APP\HSM\Chromni\DATA\0714\

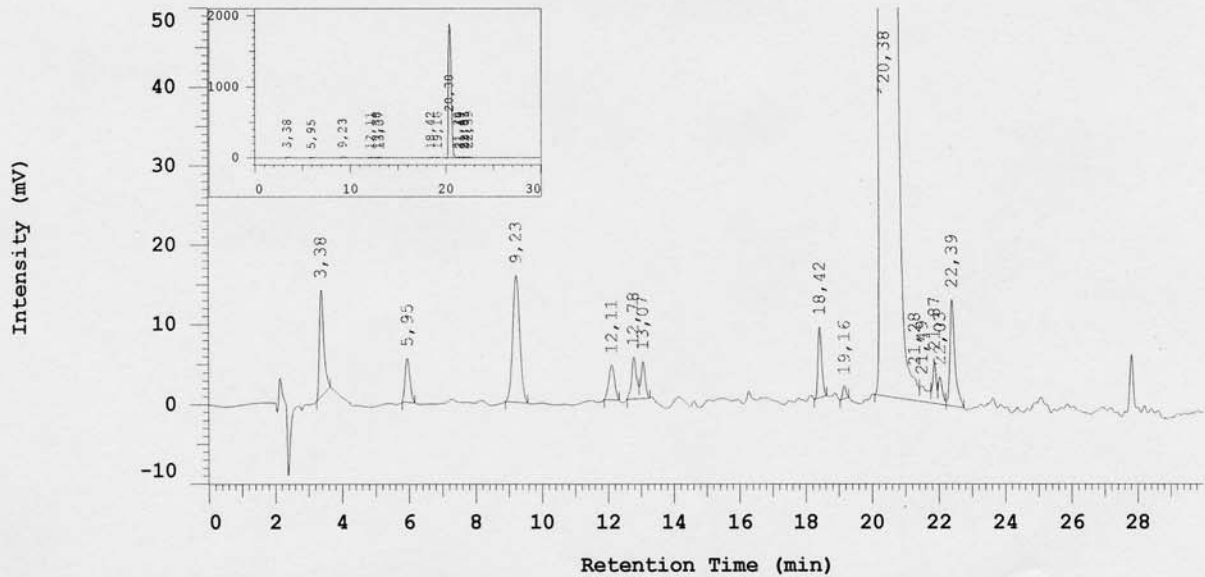
Application: Chromni

Sample Name: ABN 493B

Series:0714
Vial Number: 30
Vial Type: UNK
Volume: 5,0 ul

Injection from this vial: 1 of 1

Chrom Type: HPLC Channel : 1



Acquisition Method: Chromni

Blank Subtr Sample Name: ACN

Column Type: 010

Solvent A: Wasser + 0,05%TFA

Developed by: Jens

Solvent B: ACN + 0,05%TFA

No.	RT	Area	Conc 1	BC
1	3,38	117977	0,321	MC
2	5,95	53430	0,145	MC
3	9,23	229795	0,625	MC
4	12,11	52980	0,144	MC
5	12,78	53638	0,146	MC
6	13,07	40678	0,111	MC
7	18,42	67330	0,183	MC
8	19,16	11143	0,030	BB
9	20,38	35652464	96,983	MC
10	21,28	245452	0,668	MC
11	21,49	34075	0,093	MC
12	21,87	37677	0,102	MC
13	22,03	28129	0,077	MC
14	22,39	136647	0,372	MC
		36761415	100,000	

Peak rejection level: 0

HPLC

Comp20c

Analyzed: 12.03.09 05:06

Reported: 12.03.09 11:19
Processed: 12.03.09 11:19

Data Path: D:\WIN32APP\HSM\Chromni\DATA\0018\

Application: Chromni

Sample Name: ABN382

Injection from this vial: 1 of 1

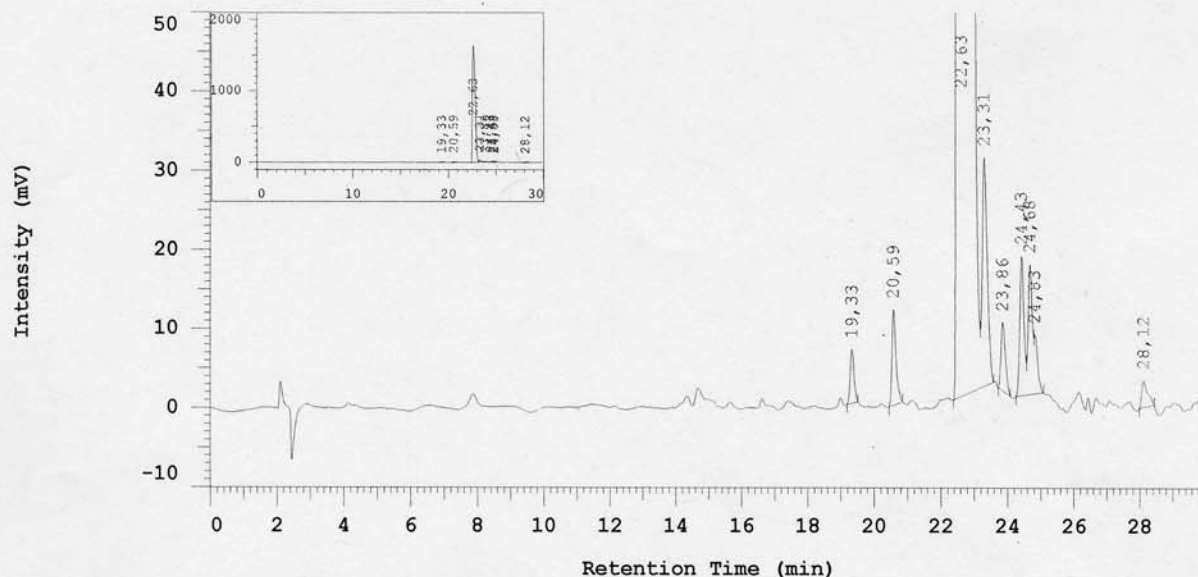
Series:0018

Vial Number: 14

Vial Type: UNK

Volume: 5,0 ul

Chrom Type: HPLC Channel : 1



Acquisition Method: Chromni

Blank Subtr Sample Name: ACN

Column Type: 010

Solvent A: Wasser + 0,05%TFA

Developed by: Jens

Solvent B: ACN + 0,05%TFA

No.	RT	Area	Conc 1	BC
1	19,33	54341	0,170	MC
2	20,59	100714	0,315	MC
3	22,63	31011926	97,094	MC
4	23,31	303564	0,950	MC
5	23,86	78402	0,245	MC
6	24,43	150274	0,470	MC
7	24,68	139714	0,437	MC
8	24,83	58841	0,184	MC
9	28,12	42230	0,132	MC
		31940006	100,000	

Peak rejection level: 0

HPLC Comp20d

Analyzed: 09.12.09 21:02

Reported: 19.01.10 14:19
Processed: 10.12.09 10:31

Data Path: D:\WIN32APP\HSM\Chromni\DATA\0934\

Application: Chromni

Sample Name: ABN 536B

Injection from this vial: 1 of 1

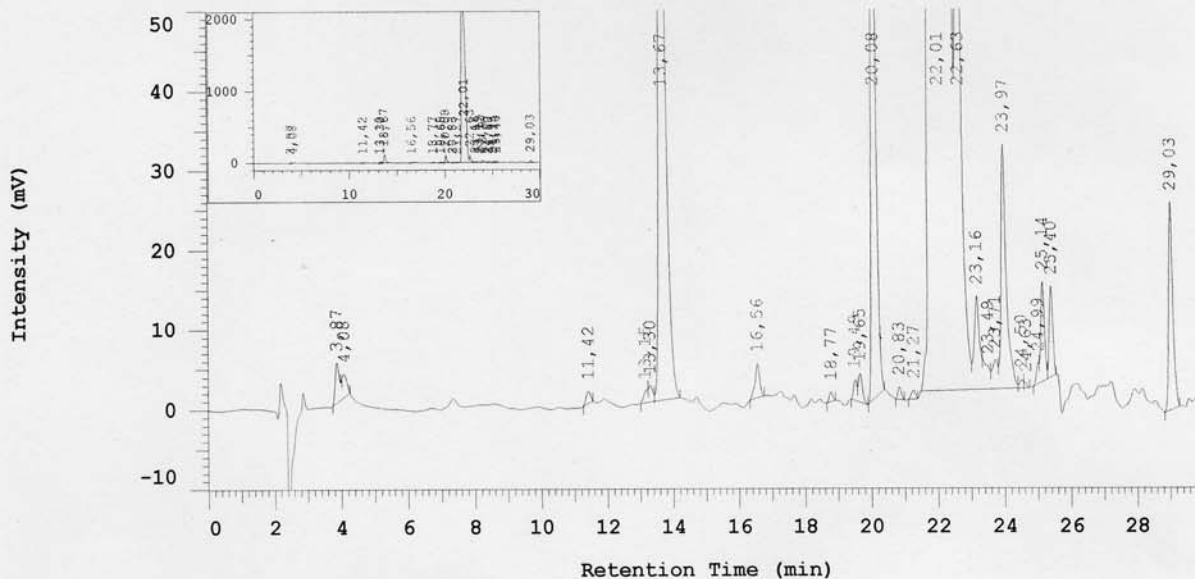
Series:0934

Vial Number: 4

Vial Type: UNK

Volume: 5,0 ul

Chrom Type: HPLC Channel : 1



Acquisition Method: Chromni

Blank Subtr Sample Name: ACN

Column Type: 010

Solvent A: Wasser + 0,05%TFA

Developed by: Jens

Solvent B: ACN + 0,05%TFA

No.	RT	Area	Conc 1	BC
1	3,87	39453	0,069	MC
2	4,08	27753	0,048	MC
3	11,42	13350	0,023	MC
4	13,15	12343	0,022	MC
5	13,30	19177	0,034	MC
6	13,67	1430128	2,498	MC
7	16,56	40534	0,071	BB
8	18,77	8341	0,015	MC
9	19,49	16935	0,030	MC
10	19,65	29650	0,052	MC
11	20,08	883568	1,544	MC
12	20,83	10934	0,019	MC
13	21,27	9491	0,017	MC
14	22,01	52644403	91,972	MC
15	22,63	1073116	1,875	MC
16	23,16	130922	0,229	MC
17	23,49	43631	0,076	MC
18	23,71	39661	0,069	MC
19	23,97	334300	0,584	MC
20	24,50	7991	0,014	MC
21	24,63	3594	0,006	MC
22	24,99	12887	0,023	MC
23	25,14	97628	0,171	MC
24	25,40	82741	0,145	MC
25	29,03	226928	0,396	MC

Comp21a

Analyzed: 05.11.09 03:48

Reported: 05.11.09 09:57

Processed: 05.11.09 09:57

Data Path: D:\WIN32APP\HSM\Chromni\DATA\0796\

Application: Chromni

Series:0796

Vial Number: 13

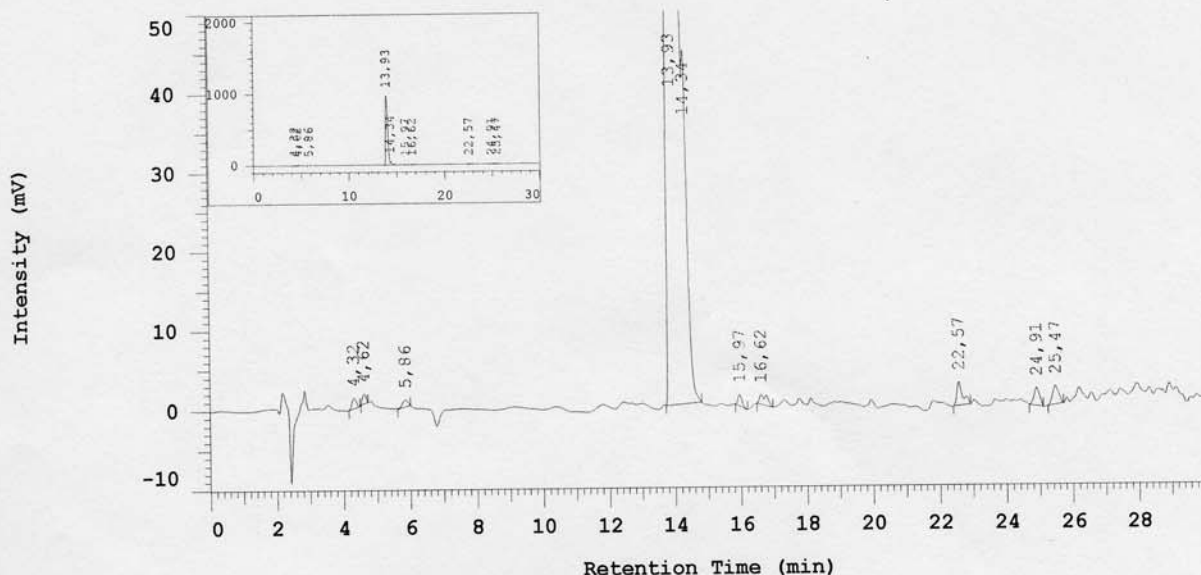
Sample Name: ABN517

Vial Type: UNK

Injection from this vial: 1 of 1

Volume: 5,0 ul

Chrom Type: HPLC Channel : 1



Acquisition Method: Chromni

Blank Subtr Sample Name: ACN

Column Type: 010

Developed by: Jens

Solvent A: Wasser + 0,05%TFA

Solvent B: ACN + 0,05%TFA

No.	RT	Area	Conc 1	BC
1	4,32	11468	0,077	MC
2	4,62	8616	0,058	MC
3	5,86	8931	0,060	MC
4	13,93	14339144	96,329	MC
5	14,34	396323	2,662	MC
6	15,97	11337	0,076	BB
7	16,62	19598	0,132	MC
8	22,57	35397	0,238	MC
9	24,91	25370	0,170	MC
10	25,47	29374	0,197	MC
		14885558	100,000	

Peak rejection level: 0

HPLC Comp21b

Analyzed: 10.11.09 22:34

Reported: 11.11.09 09:45
Processed: 11.11.09 09:45

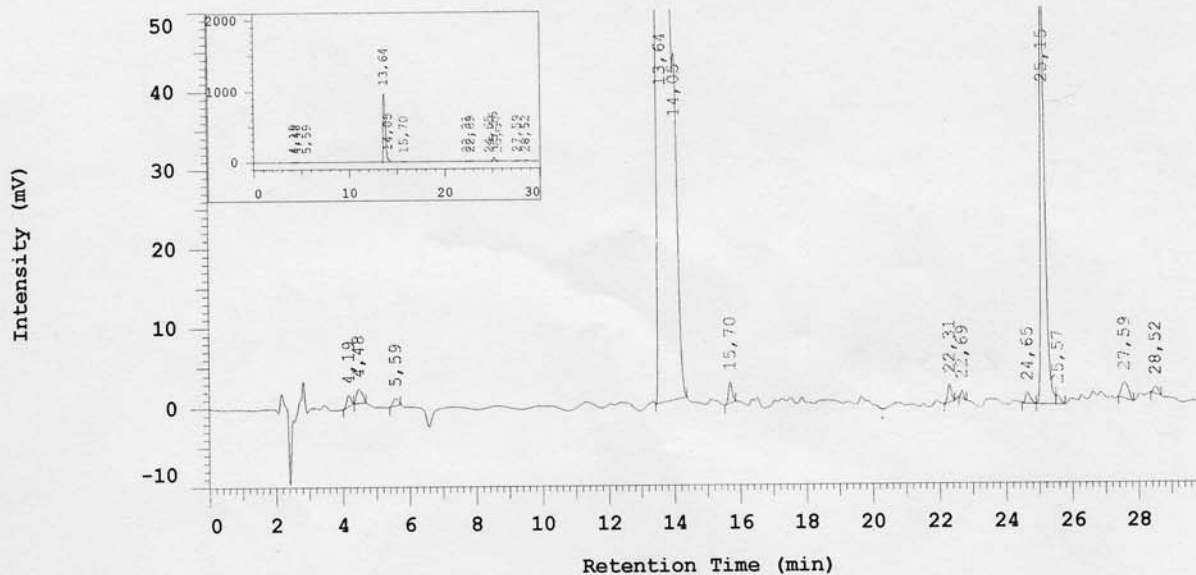
Data Path: D:\WIN32APP\HSM\Chromni\DATA\0813\
Application: Chromni

Sample Name: ABN 514R

Injection from this vial: 1 of 1

Series:0813
Vial Number: 11
Vial Type: UNK
Volume: 5,0 ul

Chrom Type: HPLC Channel : 1



Acquisition Method: Chromni

Blank Subtr Sample Name: ACN

Column Type: 010

Solvent A: Wasser + 0,05%TFA

Developed by: Jens

Solvent B: ACN + 0,05%TFA

No.	RT	Area	Conc 1	BC
1	4,19	11855	0,077	MC
2	4,48	20930	0,136	MC
3	5,59	9501	0,062	MC
4	13,64	14299228	93,188	MC
5	14,05	378097	2,464	MC
6	15,70	20115	0,131	BB
7	22,31	16691	0,109	BB
8	22,69	5122	0,033	BB
9	24,65	12954	0,084	BB
10	25,15	521422	3,398	BB
11	25,57	9892	0,064	MC
12	27,59	29858	0,195	BB
13	28,52	8900	0,058	MC
		15344565	100,000	

Peak rejection level: 0

HPLC

Comp21c

Analyzed: 30.07.09 17:32

Reported: 31.07.09 13:24
Processed: 31.07.09 13:23

Data Path: D:\WIN32APP\HSM\Chromni\DATA\0470\

Application: Chromni

Sample Name: ABN458

Injection from this vial: 1 of 1

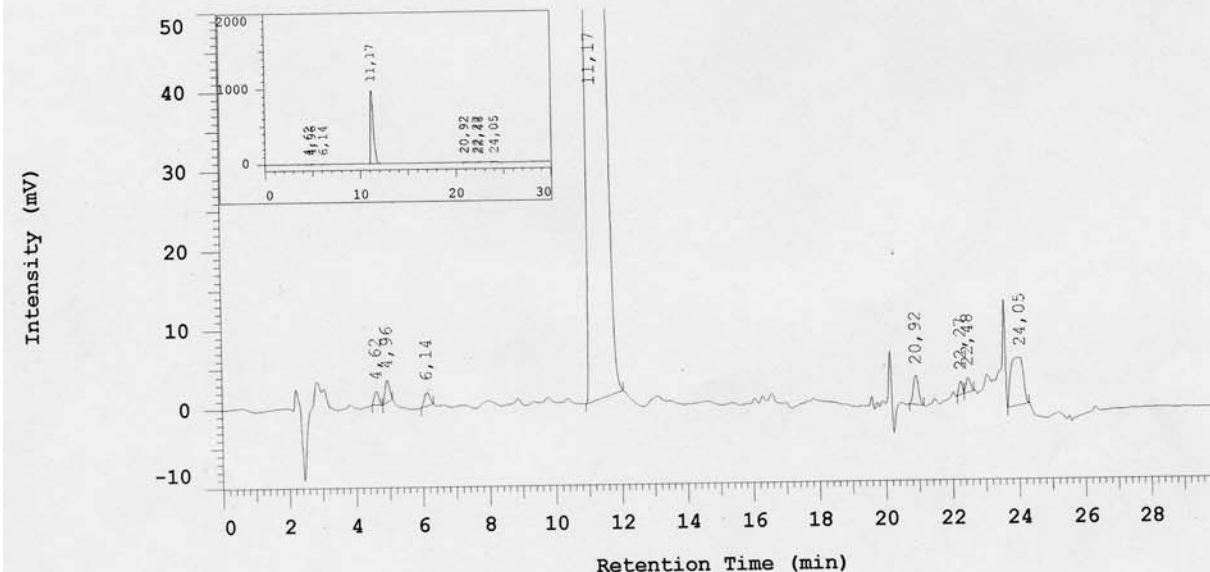
Series:0470

Vial Number: 23

Vial Type: UNK

Volume: 5,0 ul

Chrom Type: HPLC Channel : 1



Acquisition Method: Chromni MeOH

Blank Subtr Sample Name: MeOH

Column Type: 010

Solvent A: Wasser + 0,05%TFA

Developed by: Christian

Solvent C: MeOH +0,05% TFA

No.	RT	Area	Conc 1	BC
1	4,62	15327	0,079	MC
2	4,96	24985	0,129	MC
3	6,14	18312	0,095	MC
4	11,17	19085793	98,555	MC
5	20,92	39305	0,203	MC
6	22,27	11886	0,061	MC
7	22,48	16743	0,086	MC
8	24,05	153247	0,791	MC
		19365598	100,000	

Peak rejection level: 0

HPLC

Comp21d

Reported: 14.01.10 16:50
Processed: 14.01.10 16:50

Data Path: D:\WIN32APP\HSM\Chromni\DATA\1023\

Application: Chromni

Sample Name: ABN540R

Injection from this vial: 1 of 1

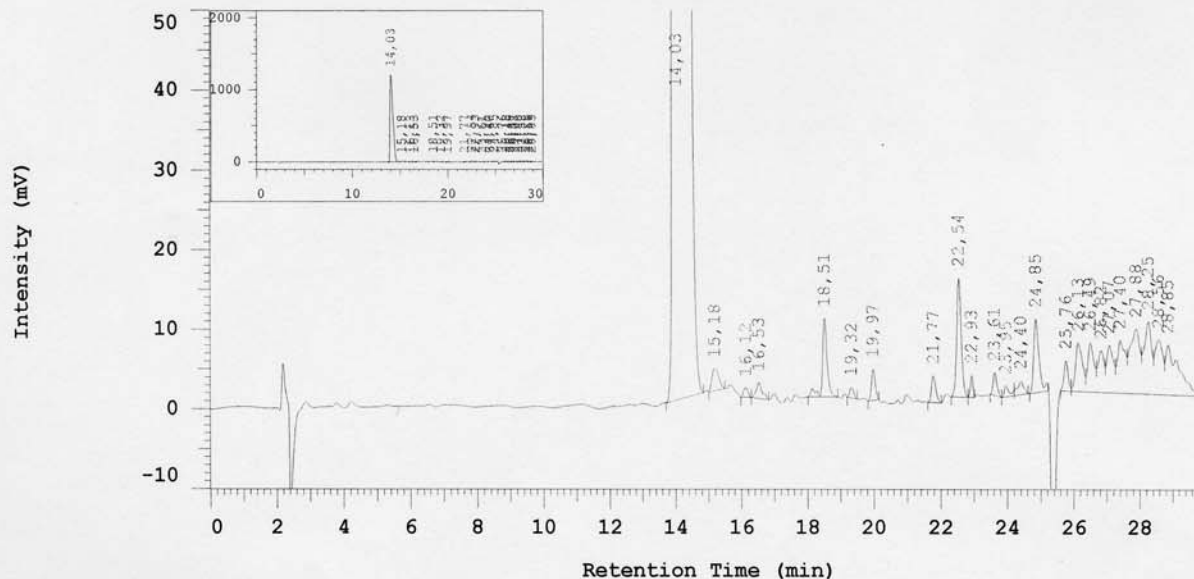
Series:1023

Vial Number: 8

Vial Type: UNK

Volume: 5,0 ul

Chrom Type: HPLC Channel : 1



Acquisition Method: Chromni

Blank Subtr Sample Name: ACN

Column Type: 010

Solvent A: Wasser + 0,05%TFA

Developed by: Jens

Solvent B: ACN + 0,05%TFA

No.	RT	Area	Conc 1	BC
1	14,03	23749172	93,603	BB
2	15,18	40179	0,158	MC
3	16,12	10970	0,043	BB
4	16,53	24502	0,097	MC
5	18,51	98689	0,389	MC
6	19,32	11095	0,044	MC
7	19,97	29392	0,116	BB
8	21,77	29324	0,116	BB
9	22,54	137927	0,544	BB
10	22,93	14045	0,055	BB
11	23,61	22512	0,089	BB
12	23,95	13780	0,054	MC
13	24,40	22640	0,089	MC
14	24,85	102202	0,403	MC
15	25,76	32062	0,126	MC
16	26,13	86381	0,340	MC
17	26,49	80263	0,316	MC
18	26,82	66787	0,263	MC
19	27,07	84810	0,334	MC
20	27,40	108059	0,426	MC
21	27,88	168858	0,666	MC
22	28,25	144453	0,569	MC
23	28,56	115999	0,457	MC
24	28,85	178125	0,702	MC

25372226

100,000

Analyzed: 27.08.09 08:59

Comp22a

Reported: 27.08.09 14:29
Processed: 27.08.09 14:29

Data Path: D:\WIN32APP\HSM\Chromni\DATA\0567\

Application: Chromni

Sample Name: ABN468A

Injection from this vial: 1 of 1

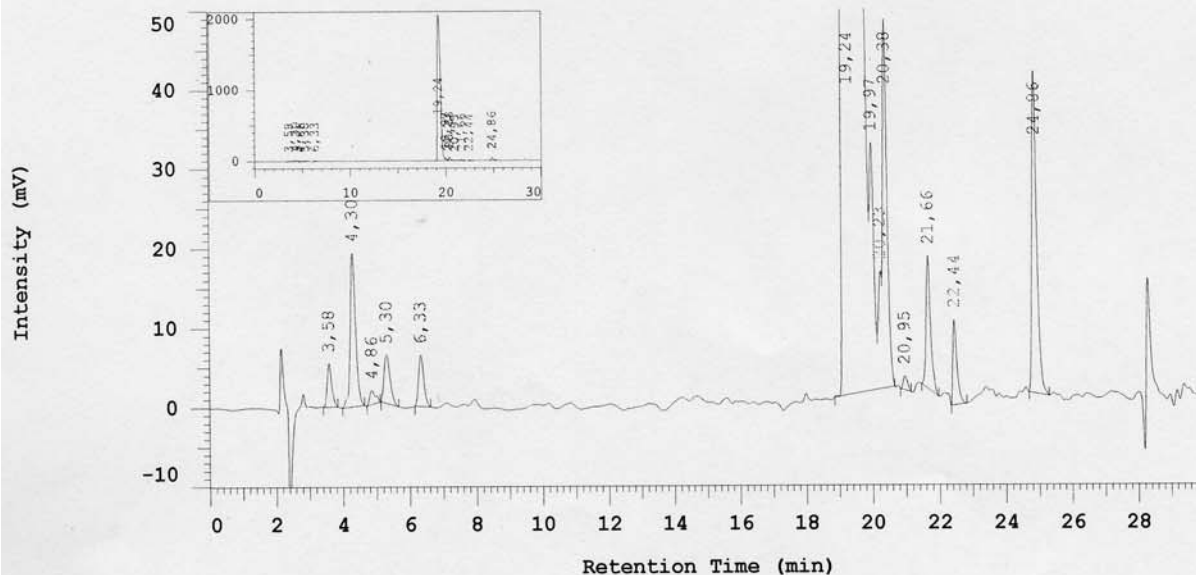
Series:0567

Vial Number: 19

Vial Type: UNK

Volume: 5,0 ul

Chrom Type: HPLC Channel : 1



Acquisition Method: Chromni

Blank Subtr Sample Name: ACN

Column Type: 010

Solvent A: Wasser + 0,05%TFA

Developed by: Jens

Solvent B: ACN + 0,05%TFA

No.	RT	Area	Conc 1	BC
1	3,58	49391	0,108	MC
2	4,30	209369	0,459	MC
3	4,86	20508	0,045	MC
4	5,30	75024	0,164	MC
5	6,33	67253	0,147	MC
6	19,24	43735161	95,848	MC
7	19,97	281365	0,617	MC
8	20,23	97249	0,213	MC
9	20,38	429939	0,942	MC
10	20,95	15779	0,035	MC
11	21,66	152207	0,334	BB
12	22,44	89895	0,197	BB
13	24,86	406571	0,891	MC
		45629711	100,000	

Peak rejection level: 0

HPLC Comp22b

Analyzed: 03.09.09 03:56

Reported: 03.09.09 13:16
Processed: 03.09.09 13:16

Data Path: D:\WIN32APP\HSM\Chromni\DATA\0584\

Application: Chromni

Sample Name: ABN468B

Injection from this vial: 1 of 1

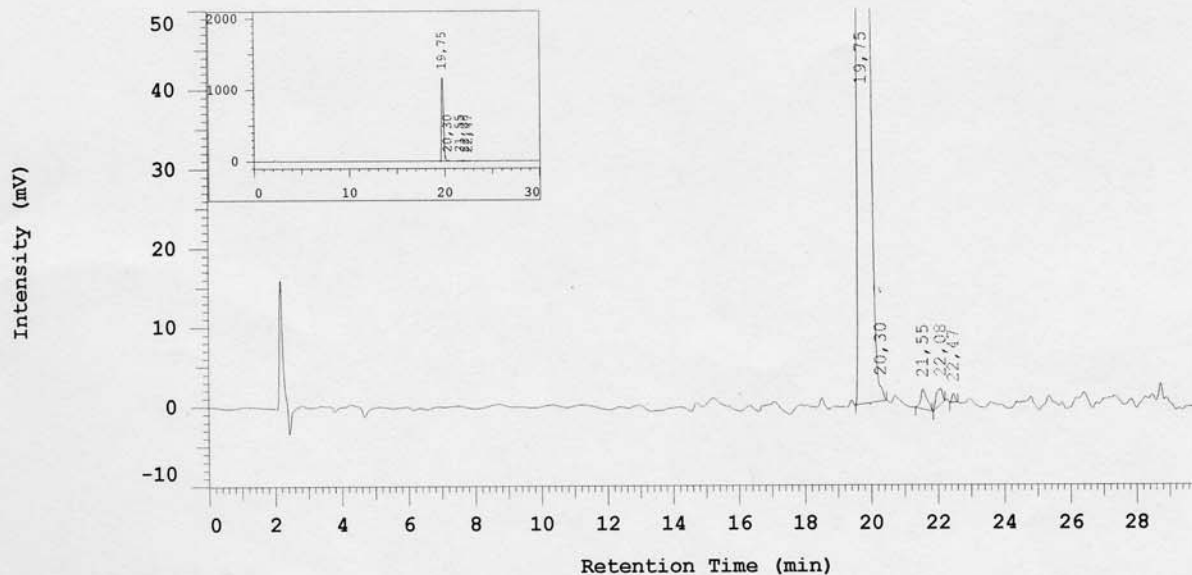
Series:0584

Vial Number: 12

Vial Type: UNK

Volume: 5,0 ul

Chrom Type: HPLC Channel : 1



Acquisition Method: Chromni

Blank Subtr Sample Name: ACN

Column Type: 010

Developed by: Jens

Solvent A: Wasser + 0,05%TFA

Solvent B: ACN + 0,05%TFA

No.	RT	Area	Conc 1	BC
1	19,75	15014985	98,002	MC
2	20,30	240424	1,569	MC
3	21,55	31969	0,209	MC
4	22,08	26908	0,176	BB
5	22,47	6740	0,044	BB
		15321026	100,000	

Peak rejection level: 0

HPLC Comp22c

Analyzed: 03.12.09 11:35

Reported: 03.12.09 15:59
Processed: 03.12.09 15:59

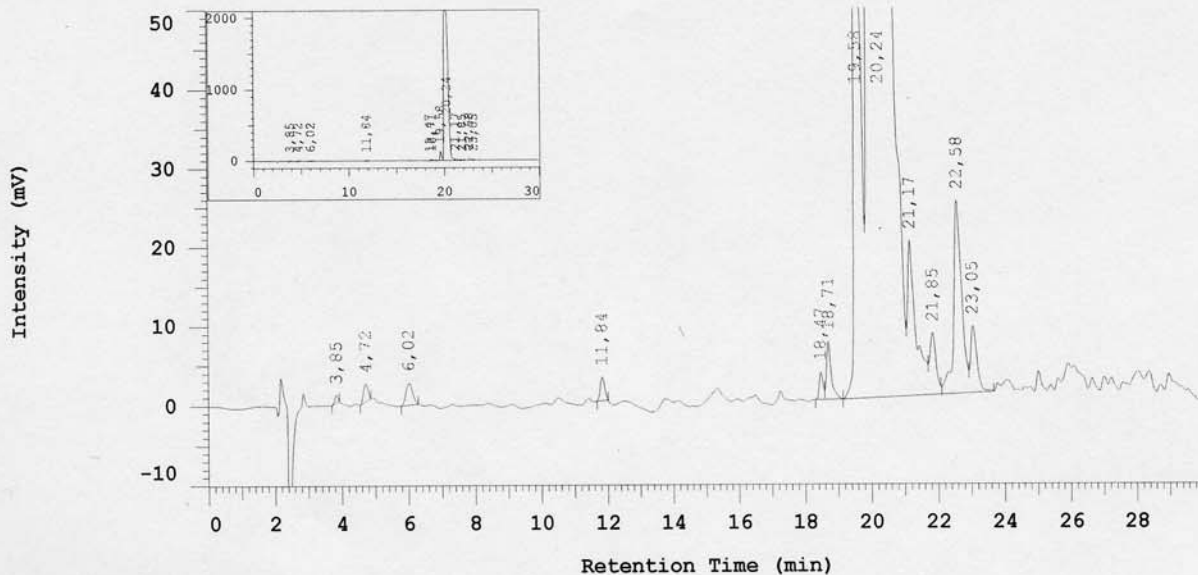
Data Path: D:\WIN32APP\HSM\Chromni\DATA\0925\
Application: Chromni

Sample Name: ABN537A

Injection from this vial: 1 of 1

Series:0925
Vial Number: 20
Vial Type: UNK
Volume: 5,0 ul

Chrom Type: HPLC Channel : 1



Acquisition Method: Chromni

Blank Subtr Sample Name: ACN

Column Type: 010

Solvent A: Wasser + 0,05%TFA

Developed by: Jens

Solvent B: ACN + 0,05%TFA

No.	RT	Area	Conc 1	BC
1	3,85	5809	0,009	MC
2	4,72	19797	0,030	MC
3	6,02	36910	0,056	MC
4	11,84	26681	0,040	BB
5	18,47	26151	0,040	BV
6	18,71	72173	0,109	VB
7	19,58	1351455	2,046	BV
8	20,24	63566649	96,215	VV
9	21,17	339824	0,514	MC
10	21,85	102999	0,156	MC
11	22,58	407944	0,617	MC
12	23,05	110916	0,168	MC
		66067308	100,000	

Peak rejection level: 0

HPLC

Comp22d

Analyzed: 09.12.09 21:44

Reported: 19.01.10 14:17
Processed: 19.01.10 14:17

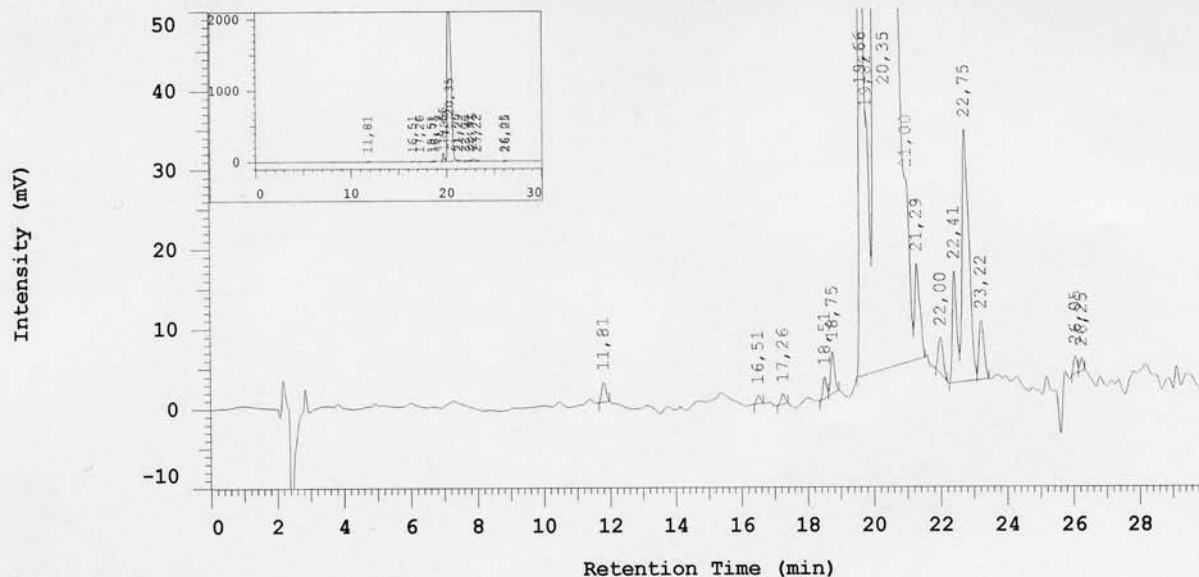
Data Path: D:\WIN32APP\HSM\Chromni\DATA\0935\
Application: Chromni

Sample Name: ABN 537B

Injection from this vial: 1 of 1

Series:0935
Vial Number: 5
Vial Type: UNK
Volume: 5,0 ul

Chrom Type: HPLC Channel : 1



Acquisition Method: Chromni

Blank Subtr Sample Name: ACN

Column Type: 010

Solvent A: Wasser + 0,05%TFA

Developed by: Jens

Solvent B: ACN + 0,05%TFA

No.	RT	Area	Conc 1	BC
1	11,81	21965	0,036	MC
2	16,51	8350	0,014	MC
3	17,26	10872	0,018	MC
4	18,51	19733	0,032	MC
5	18,75	42093	0,069	MC
6	19,66	940914	1,532	MC
7	19,82	197538	0,322	MC
8	20,35	57617132	93,821	MC
9	21,00	1713847	2,791	MC
10	21,29	126390	0,206	MC
11	22,00	44354	0,072	MC
12	22,41	124555	0,203	MC
13	22,75	441256	0,719	MC
14	23,22	75856	0,124	MC
15	26,05	16216	0,026	MC
16	26,25	10948	0,018	MC
		61412019	100,000	

Peak rejection level: 0

HPLC Comp23a

Analyzed: 06.08.09 18:02

Reported: 07.08.09 11:13

Processed: 07.08.09 11:13

Data Path: D:\WIN32APP\HSM\Chromni\DATA\0505\

Application: Chromni

Sample Name: ABN 463

Injection from this vial: 1 of 1

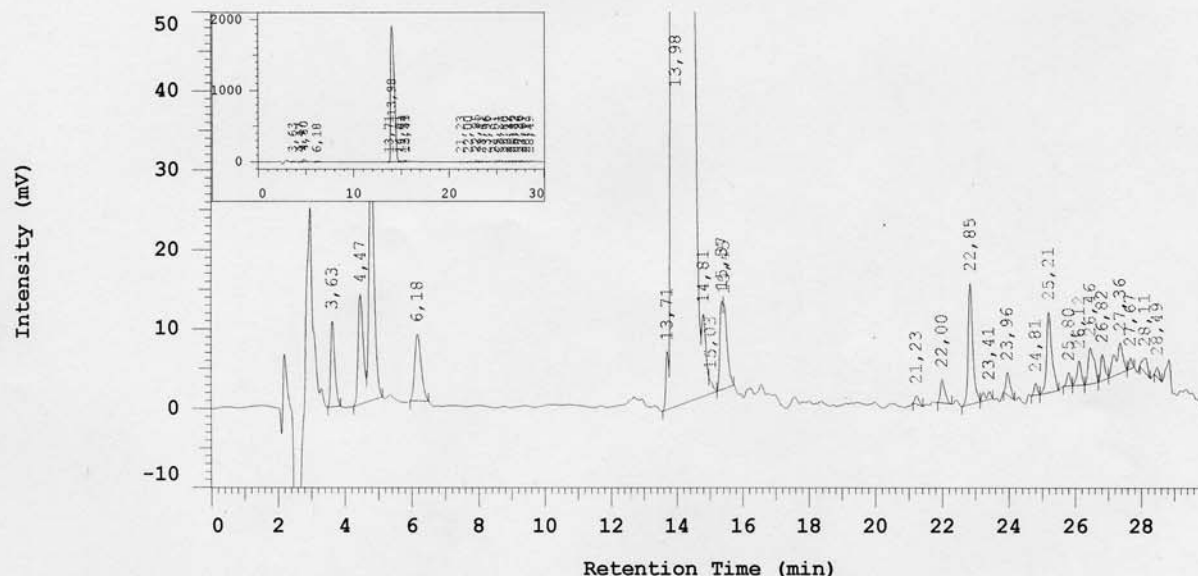
Series:0505

Vial Number: 28

Vial Type: UNK

Volume: 5,0 ul

Chrom Type: HPLC Channel : 1



Acquisition Method: Chromni

Blank Subtr Sample Name: ACN

Column Type: 010

Solvent A: Wasser + 0,05%TFA

Developed by: Jens

Solvent B: ACN + 0,05%TFA

No.	RT	Area	Conc 1	BC
1	3,63	87352	0,174	MC
2	4,47	142224	0,283	MC
3	4,80	339777	0,676	MC
4	6,18	109080	0,217	MC
5	13,71	41745	0,083	MC
6	13,98	48726352	96,925	MC
7	14,81	96191	0,191	MC
8	15,03	14232	0,028	MC
9	15,37	69070	0,137	MC
10	15,45	86679	0,172	MC
11	21,23	8884	0,018	BB
12	22,00	25938	0,052	MC
13	22,85	142957	0,284	MC
14	23,41	13492	0,027	MC
15	23,96	24950	0,050	MC
16	24,81	9789	0,019	BB
17	25,21	110721	0,220	BB
18	25,80	11876	0,024	BB
19	26,12	27383	0,054	BB
20	26,46	55600	0,111	BB
21	26,82	26983	0,054	MC
22	27,36	62963	0,125	MC
23	27,67	8544	0,017	MC
24	28,11	20550	0,041	BB
25	28,49	8726	0,017	BB

HPLC

Comp23b

Analyzed: 05.11.09 05:11

Reported: 19.01.10 14:20
Processed: 19.01.10 14:20

Data Path: D:\WIN32APP\HSM\Chromni\DATA\0798\

Application: Chromni

Sample Name: ABN519

Injection from this vial: 1 of 1

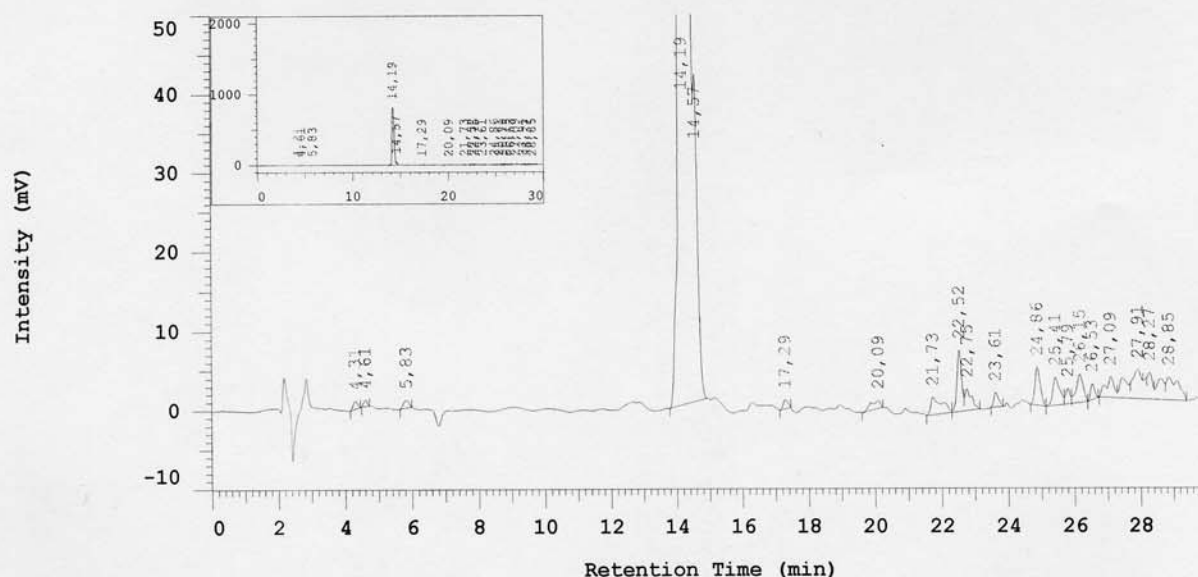
Series:0798

Vial Number: 14

Vial Type: UNK

Volume: 5,0 ul

Chrom Type: HPLC Channel : 1



Acquisition Method: Chromni

Blank Subtr Sample Name: ACN

Column Type: 010

Developed by: Jens

Solvent A: Wasser + 0,05%TFA

Solvent B: ACN + 0,05%TFA

No.	RT	Area	Conc 1	BC
1	4,31	8906	0,072	MC
2	4,61	5791	0,047	MC
3	5,83	10647	0,086	MC
4	14,19	11469925	92,255	BV
5	14,57	316480	2,546	MC
6	17,29	11049	0,089	BB
7	20,09	20416	0,164	MC
8	21,73	51329	0,413	MC
9	22,52	73468	0,591	MC
10	22,75	36263	0,292	MC
11	23,61	17599	0,142	MC
12	24,86	52963	0,426	BB
13	25,41	50524	0,406	BB
14	25,79	17994	0,145	BB
15	26,15	51629	0,415	BB
16	26,53	16578	0,133	BB
17	27,09	45070	0,363	MC
18	27,91	65651	0,528	MC
19	28,27	37302	0,300	MC
20	28,85	73248	0,589	MC
		12432832	100,000	

Peak rejection level: 0

HPLC

Comp23c

Analyzed: 30.07.09 13:39

Reported: 31.07.09 13:06
Processed: 31.07.09 13:06

Data Path: D:\WIN32APP\HSM\Chromni\DATA\0465\

Application: Chromni

Sample Name: ABN 457

Injection from this vial: 1 of 1

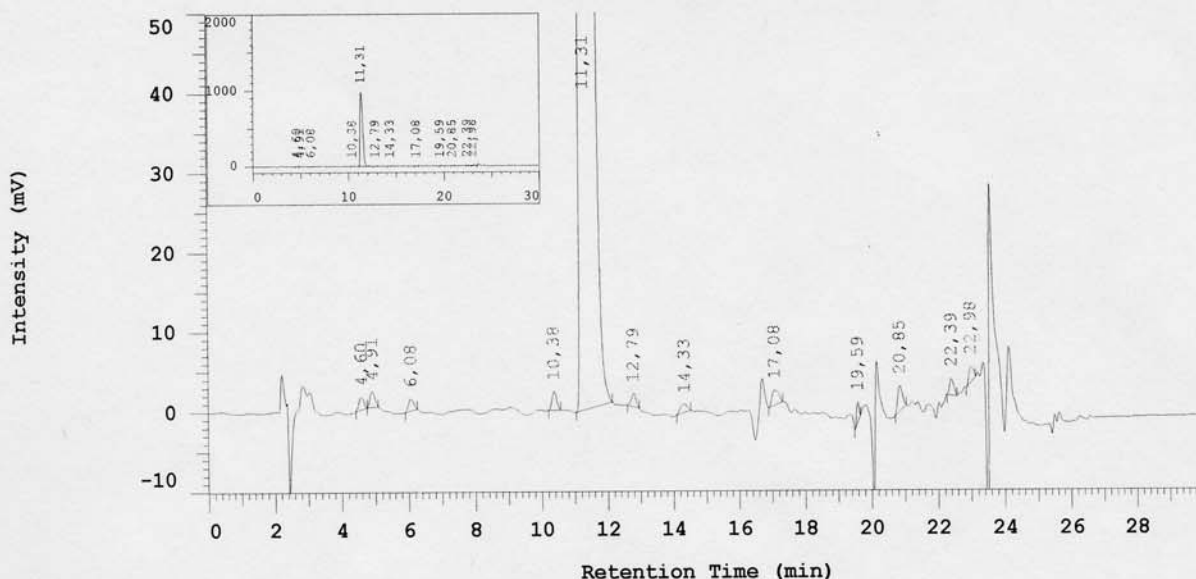
Series:0465

Vial Number: 19

Vial Type: UNK

Volume: 5,0 ul

Chrom Type: HPLC Channel : 1



Acquisition Method: Chromni MeOH

Blank Subtr Sample Name: MeOH

Column Type: 010

Solvent A: Wasser + 0,05%TFA

Developed by: Christian

Solvent C: MeOH +0,05% TFA

No.	RT	Area	Conc 1	BC
1	4,60	15405	0,087	MC
2	4,91	18773	0,106	MC
3	6,08	16004	0,090	MC
4	10,38	22703	0,128	BB
5	11,31	17555120	98,830	MC
6	12,79	16406	0,092	MC
7	14,33	14991	0,084	MC
8	17,08	25453	0,143	MC
9	19,59	11997	0,068	MC
10	20,85	30803	0,173	MC
11	22,39	17404	0,098	MC
12	22,98	17939	0,101	BB
		17762998	100,000	

Peak rejection level: 0

HPLC

Comp23d

Analyzed: 06.01.10 21:31

Reported: 07.01.10 15:59
Processed: 07.01.10 15:59

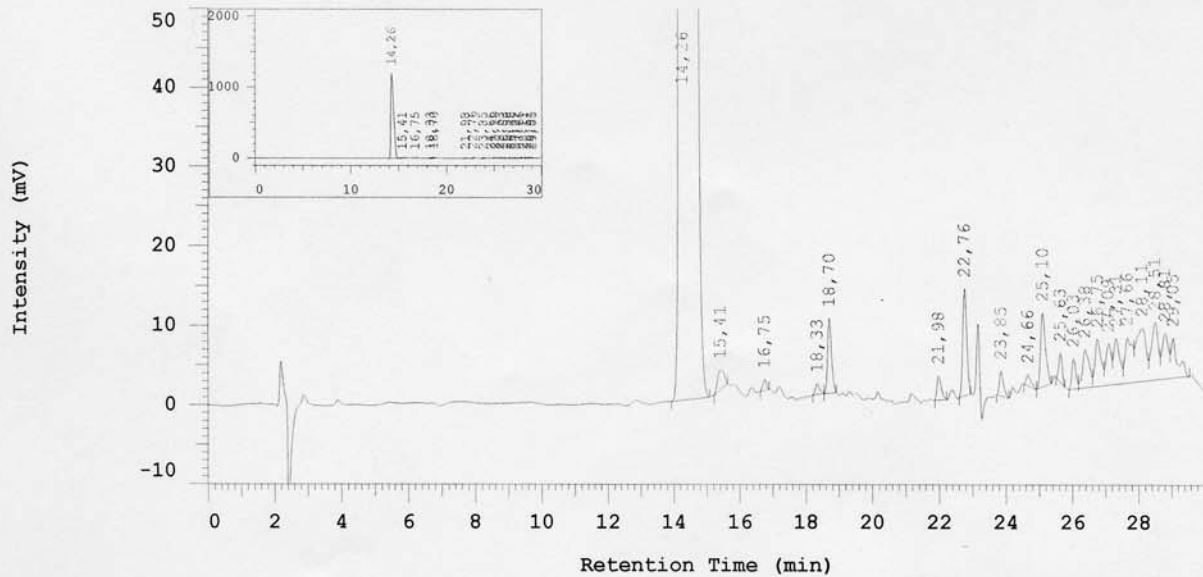
Data Path: D:\WIN32APP\HSM\Chromni\DATA\0980\
Application: Chromni

Sample Name: ABN 541

Injection from this vial: 1 of 1

Series:0980
Vial Number: 5
Vial Type: UNK
Volume: 5,0 ul

Chrom Type: HPLC Channel : 1



Acquisition Method: Chromni

Blank Subtr Sample Name: ACN

Column Type: 010

Solvent A: Wasser + 0,05%TFA

Developed by: Jens

Solvent B: ACN + 0,05%TFA

No.	RT	Area	Conc 1	BC
1	14,26	23241756	95,009	BB
2	15,41	33756	0,138	MC
3	16,75	9547	0,039	MC
4	18,33	11717	0,048	MC
5	18,70	76424	0,312	MC
6	21,98	26131	0,107	MC
7	22,76	112169	0,459	MC
8	23,85	26378	0,108	BB
9	24,66	13849	0,057	MC
10	25,10	95351	0,390	BB
11	25,63	25989	0,106	BB
12	26,03	30968	0,127	BB
13	26,38	66613	0,272	BV
14	26,75	75440	0,308	VV
15	27,09	60007	0,245	VV
16	27,31	73553	0,301	VV
17	27,66	89229	0,365	VV
18	28,11	140620	0,575	VV
19	28,51	105010	0,429	VV
20	28,81	77496	0,317	VV
21	29,05	70714	0,289	VB
		24462717	100,000	

Peak rejection level: 0