

SUPPORTING INFORMATION

New Potential Bimodal Imaging Contrast Agents Based on DOTA-like and Porphyrin Macrocycles

Claude P. Gros,* Antoine Eggenpiller, Aline Nonat,
Jean-Michel Barbe and Franck Denat*

Contribution from:

Institut de Chimie Moléculaire de l'Université de Bourgogne
(ICMUB-LIMRES, UMR CNRS 5260)
9, avenue Alain Savary BP 47870, 21078 Dijon cedex FRANCE

E-mails: claud.gros@u-bourgogne.fr; franck.denat@u-bourgogne.fr

List of SI :

Figure S1. a) Experimental and calculated MALDI/TOF HR-MS spectrum of (DO3A-AM)Gd-H₂(Porphyrin) **8** (dithranol as matrix, PEG 1500 as internal standard) and b) full spectrum between 0 and 2000 Daltons.

Figure S2. ESI mass spectra of compound **9** a) before and b) after washings with MeOH.

Figure S3. UV-visible spectra, in water, of (DO3A-AM)Gd-H₂(Porphyrin) **8** (red) and (DO3A-AM)Gd-(Porphyrin)Cu **9** (blue).

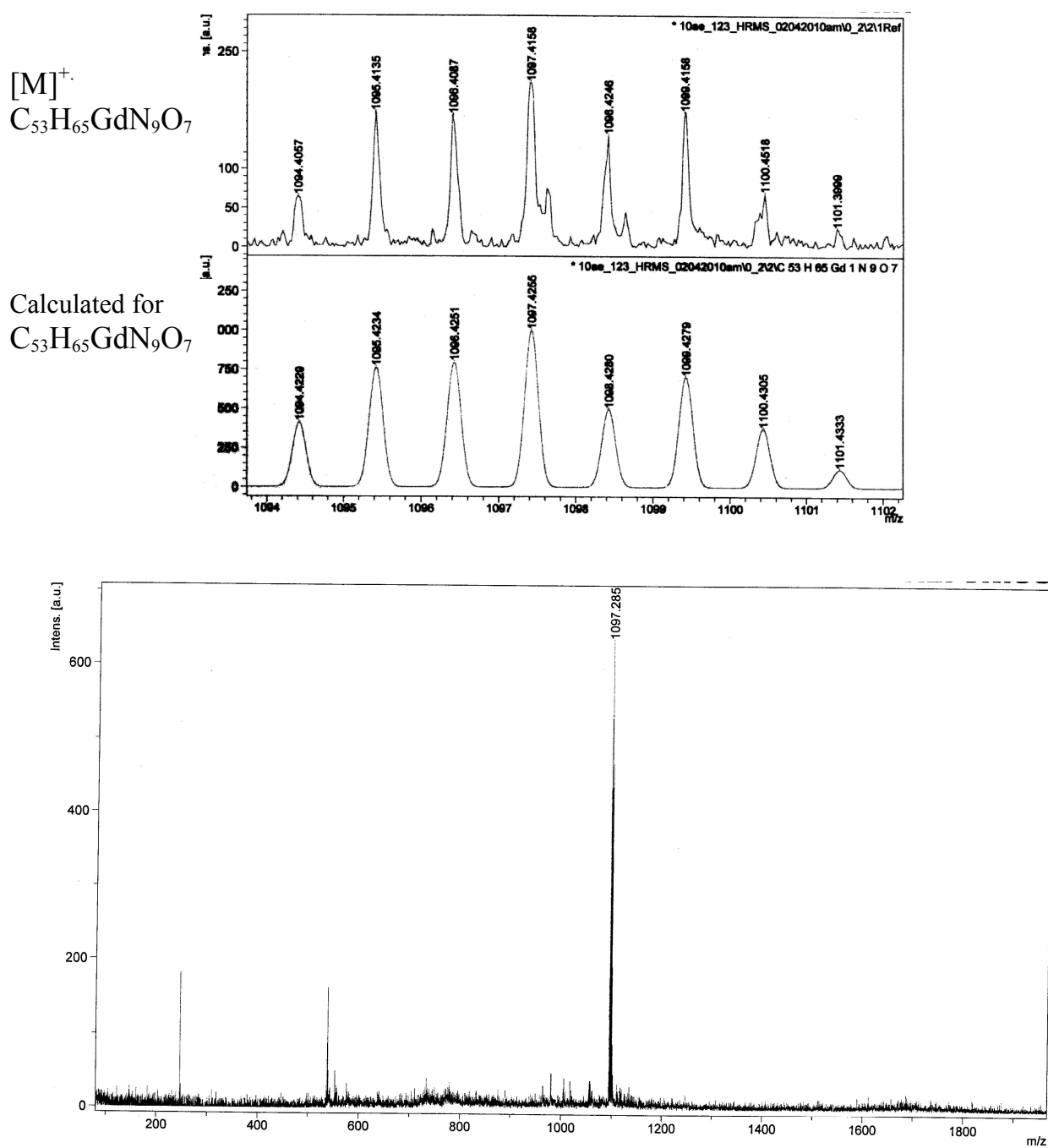
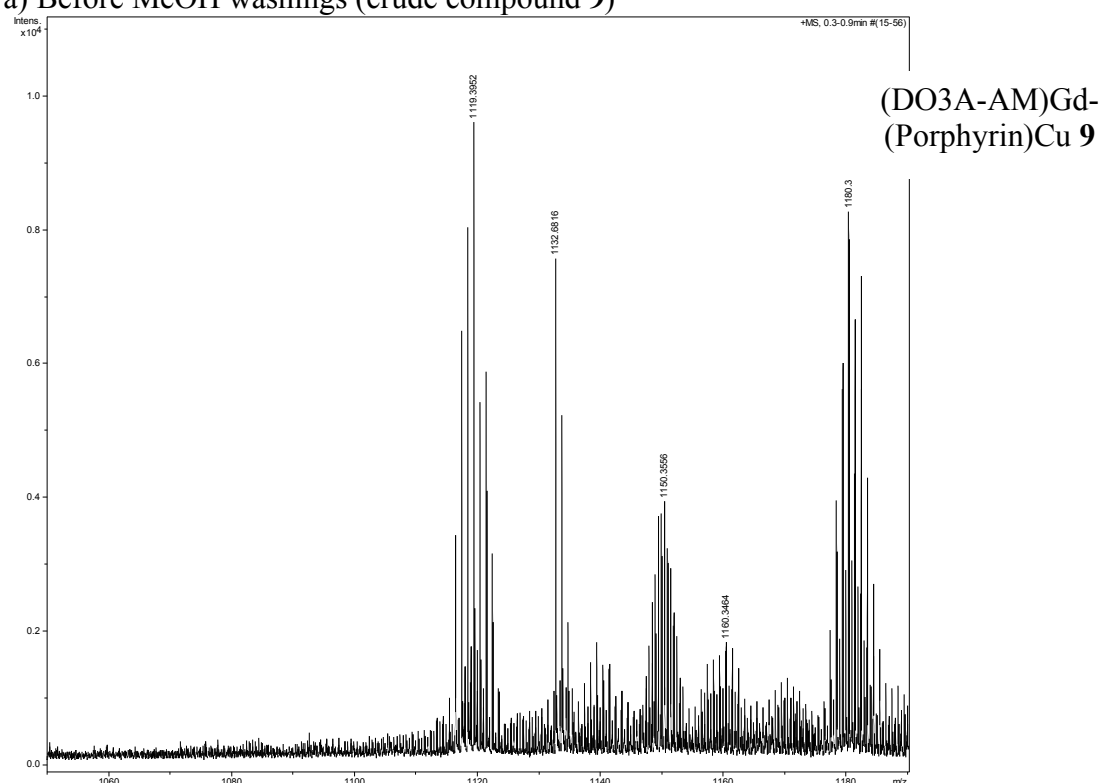


Figure S1. a) Experimental and calculated MALDI/TOF HR-MS spectrum of (DO3A-AM)Gd-H₂(Porphyrin) **8** (dithranol as matrix, PEG 1500 as internal standard) and b) full spectrum between 0 and 2000 Daltons.

a) Before MeOH washings (crude compound **9**)



b) After MeOH washings (after purification of compound **9**)

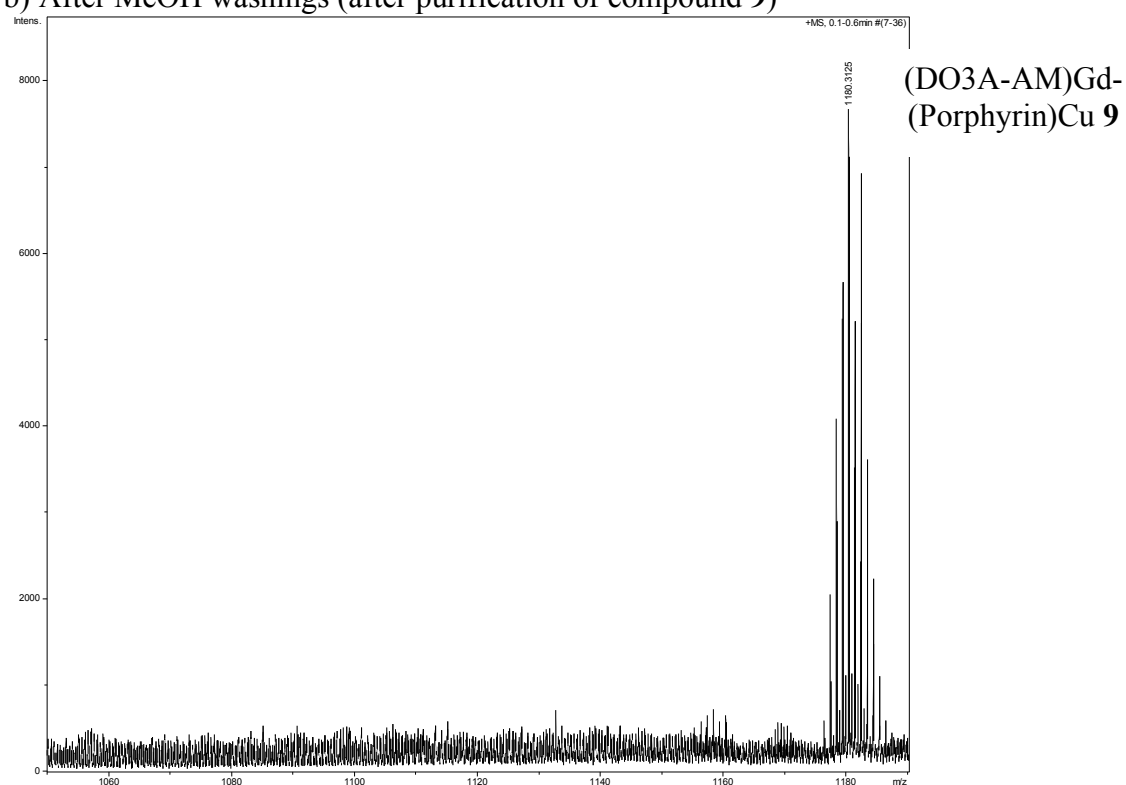


Figure S2. ESI mass spectra of compound **9** a) before and b) after washings with MeOH.

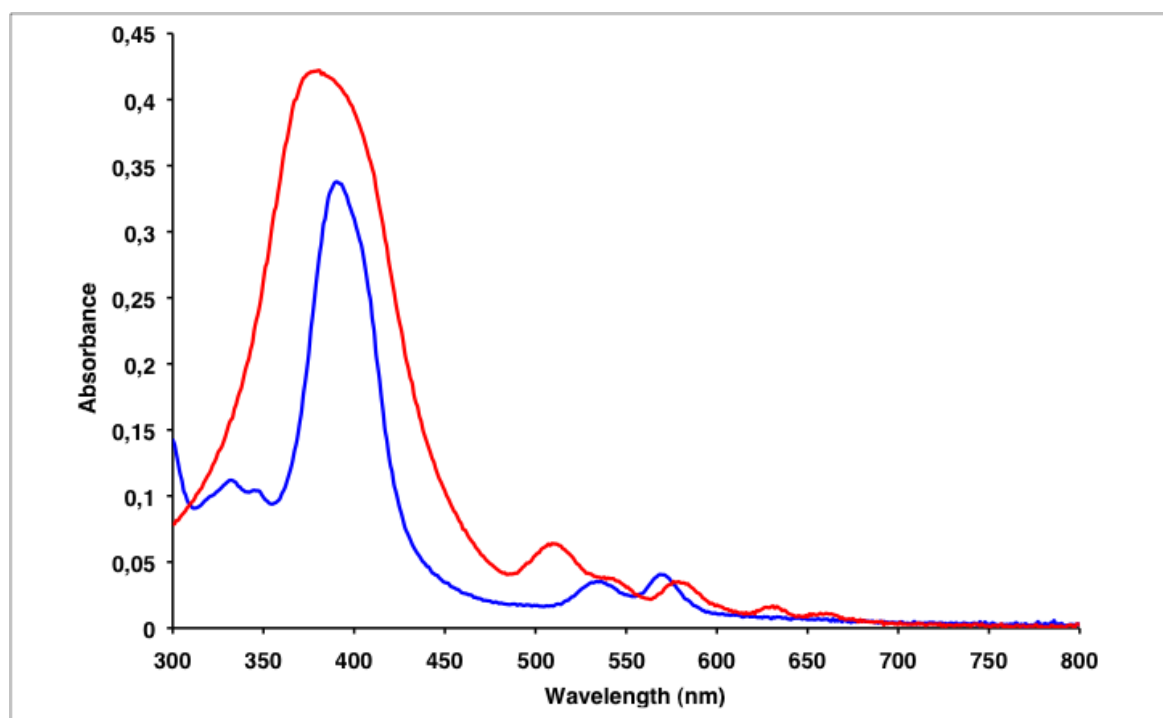


Figure S3. UV-visible spectra, in water, of (DO3A-AM)Gd-H₂(Porphyrin) **8** (red) and (DO3A-AM)Gd-(Porphyrin)Cu **9** (blue)