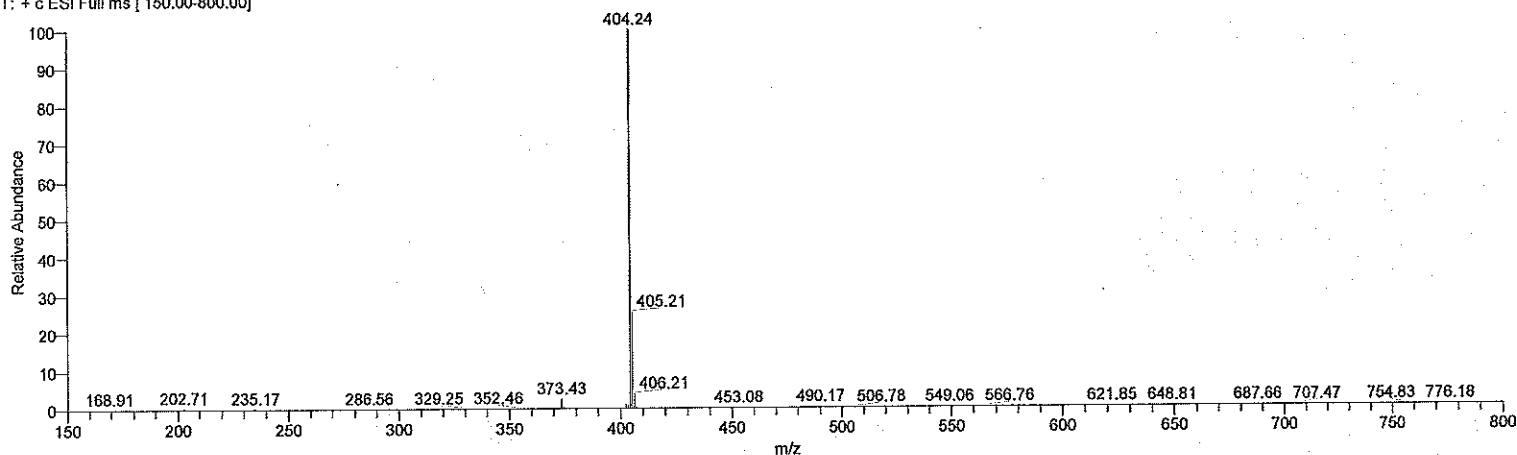
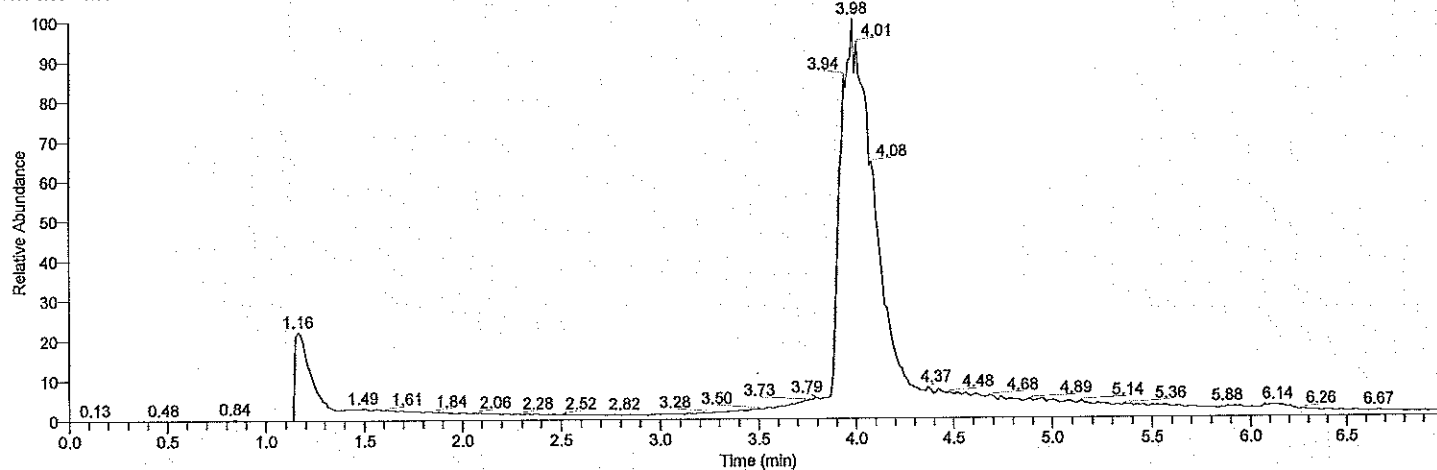


Compound 24

MKVIII27-1 #293-325 RT: 3.84-4.21 AV: 33 NL: 9.82E7
T: + c ESI Full ms [150.00-800.00]

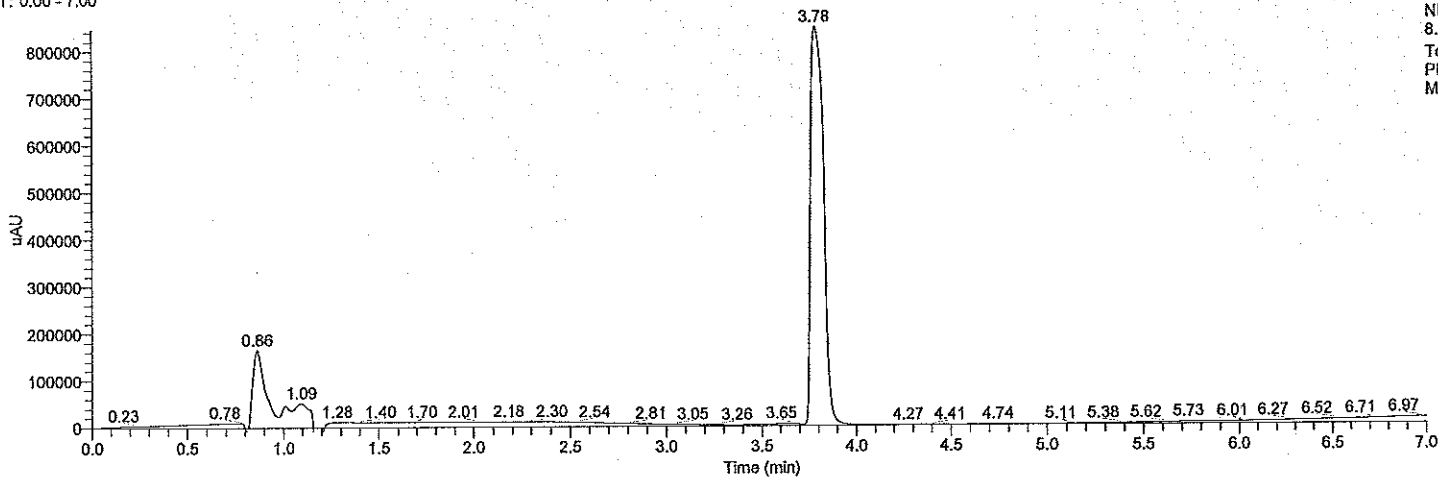


RT: 0.00 - 6.99



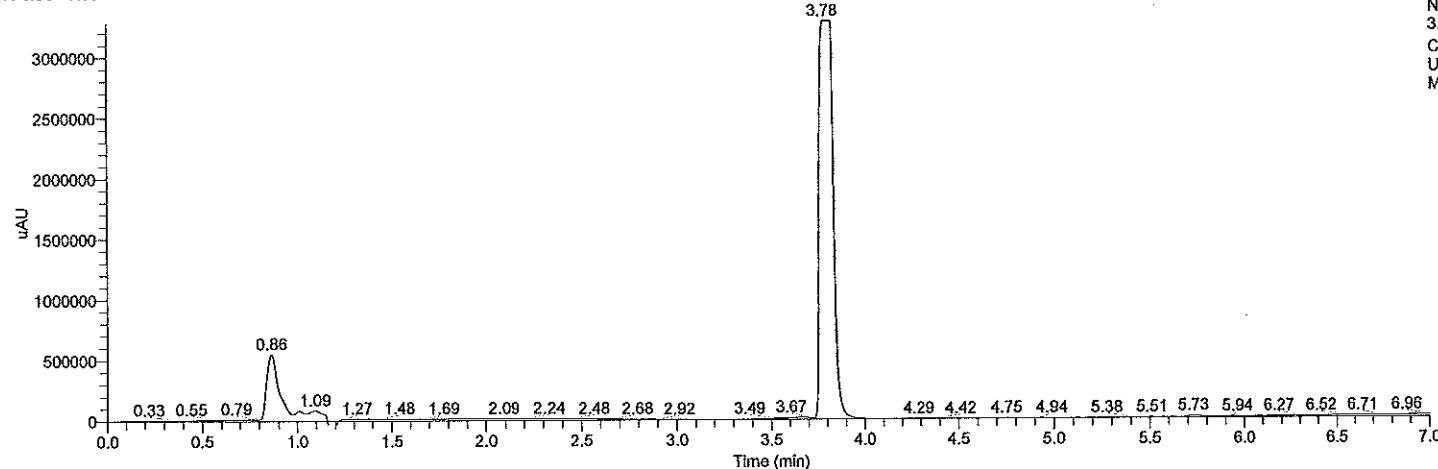
NL:
2.56E8
TIC F: MS
MKVIII27-1

RT: 0.00 - 7.00



NL:
8.47E5
Total Scan
PDA
MKVIII27-1

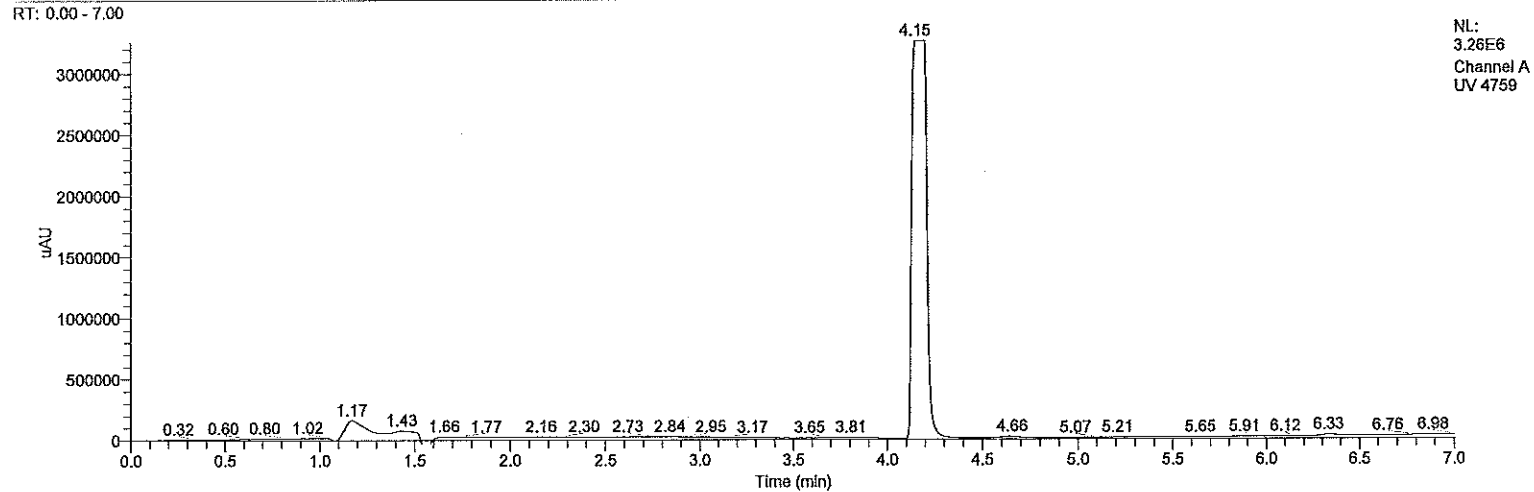
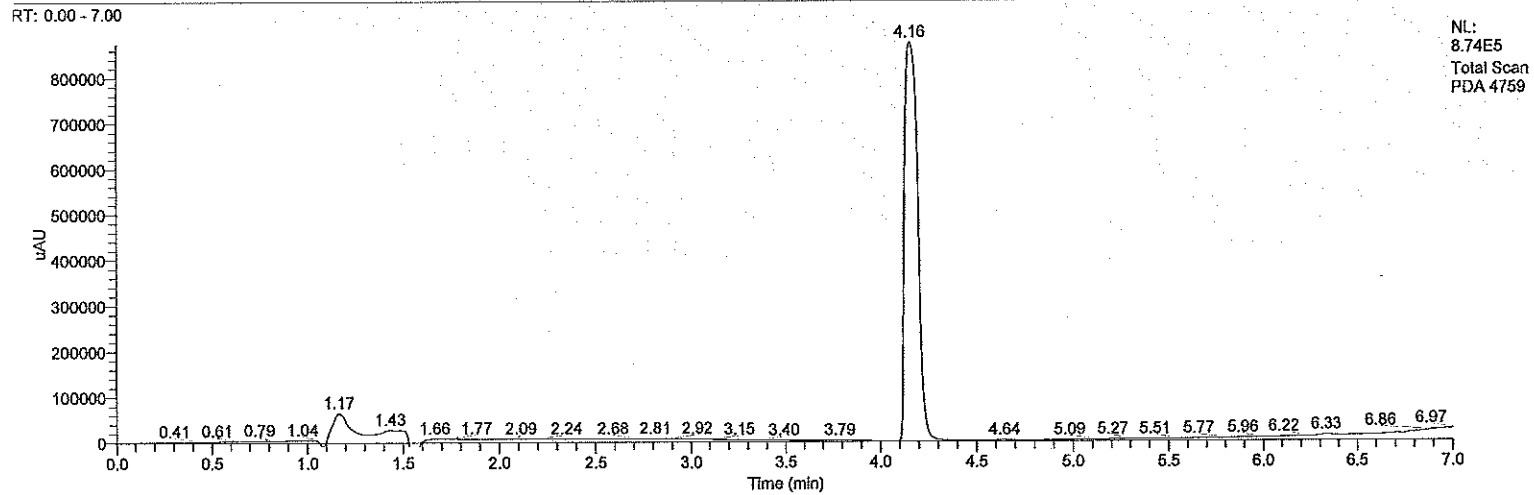
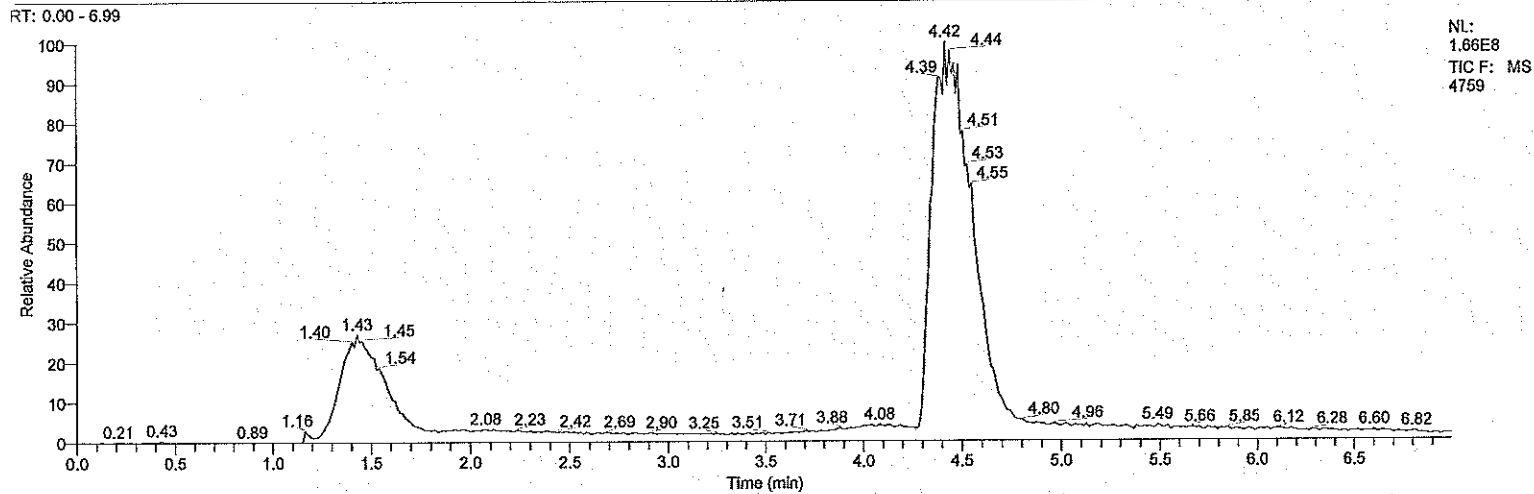
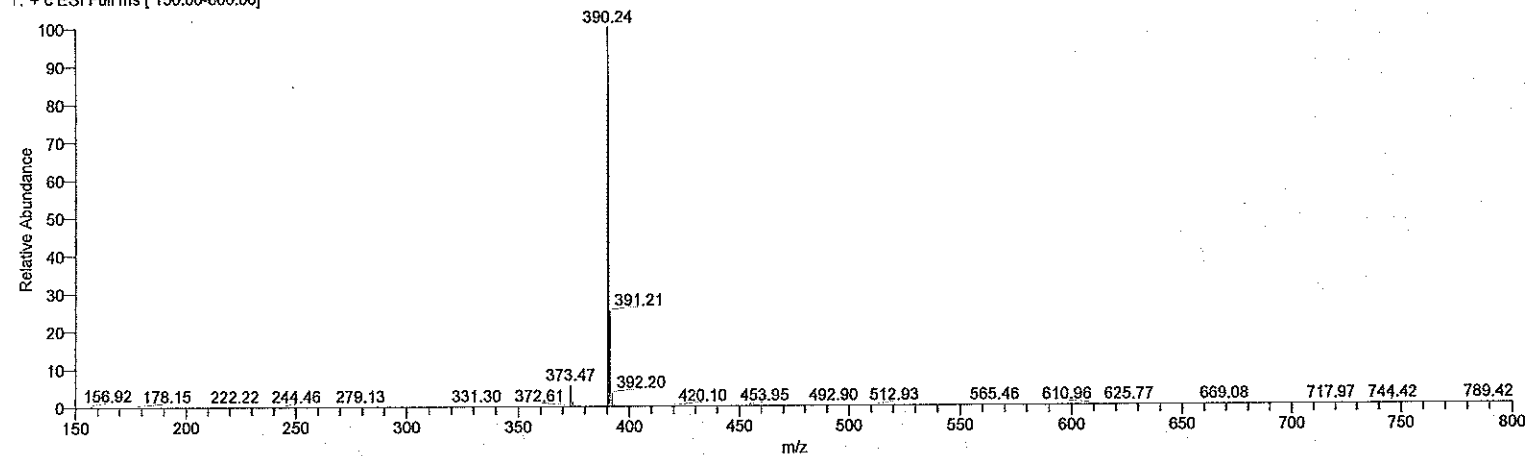
RT: 0.00 - 7.00



NL:
3.28E6
Channel A
UV
MKVIII27-1

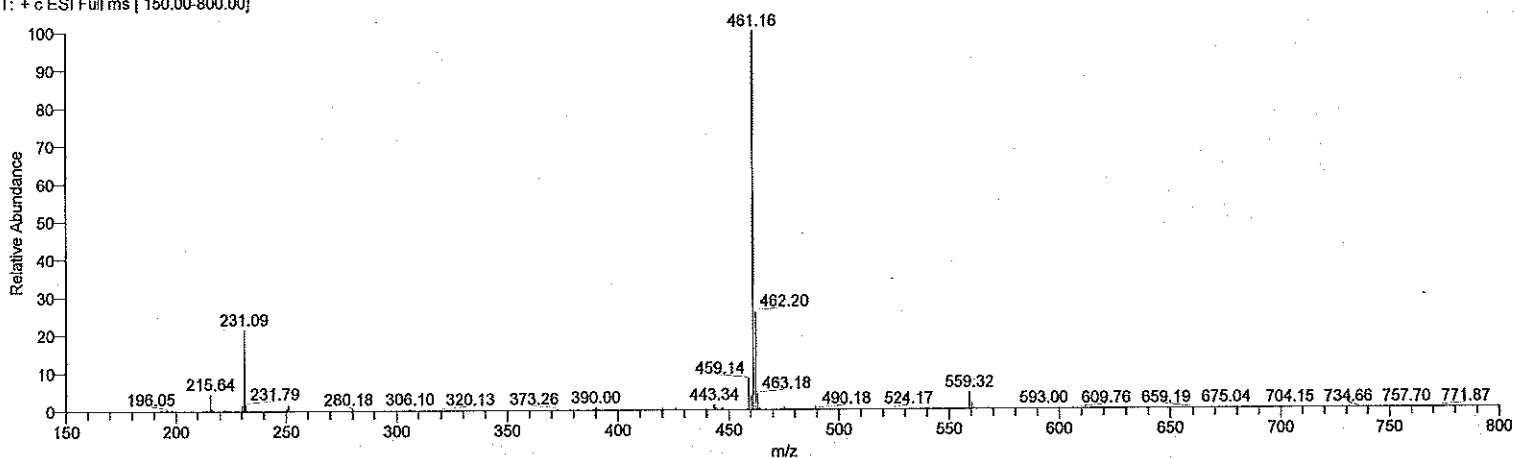
Compound 25

4759 #324-362 RT: 4.25-4.70 AV: 39 NL: 6.30E7
T: + c ESI Full ms [150.00-800.00]

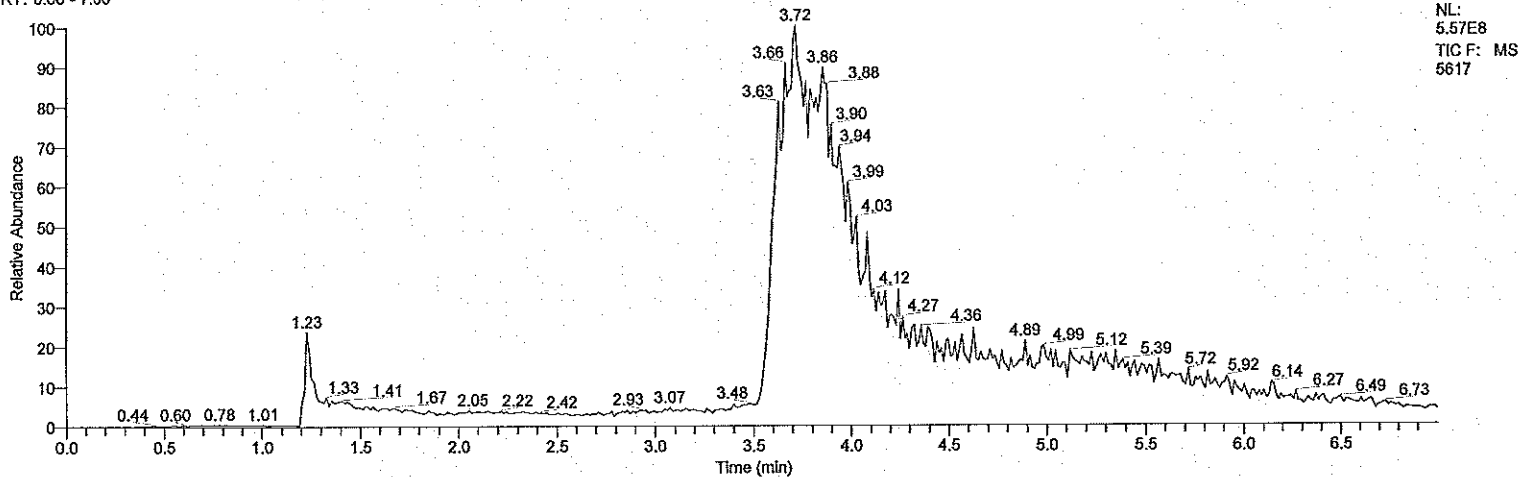


Compound 26

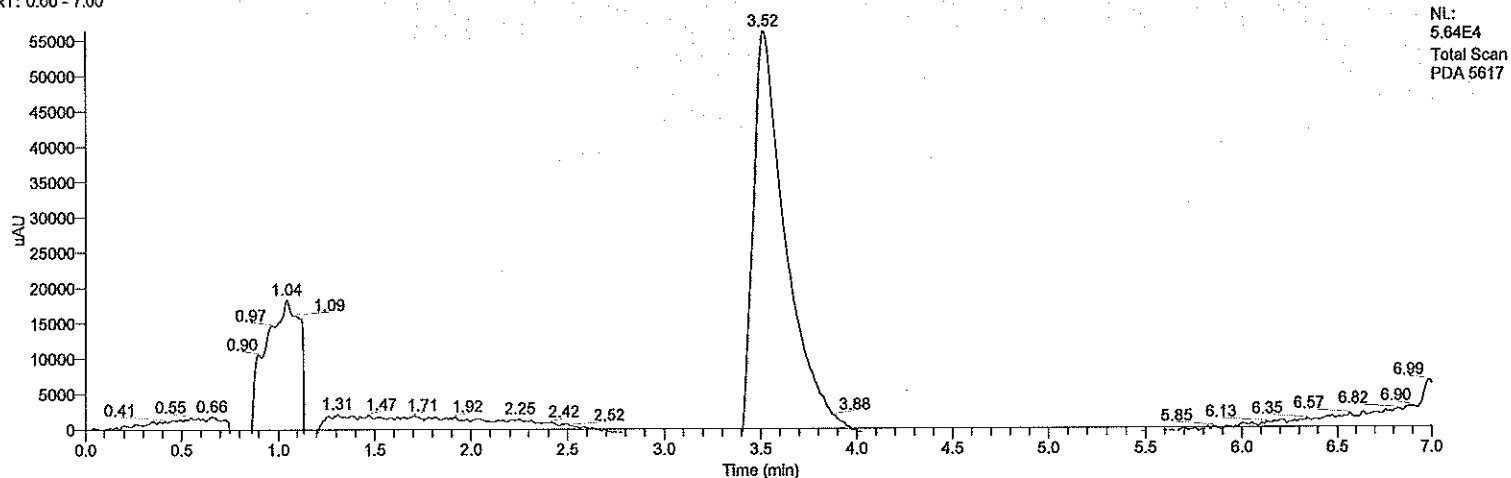
5617 #267-328 RT: 3.54-4.21 AV: 62 NL: 1.57E8
T: + c ESI Full ms [150.00-800.00]



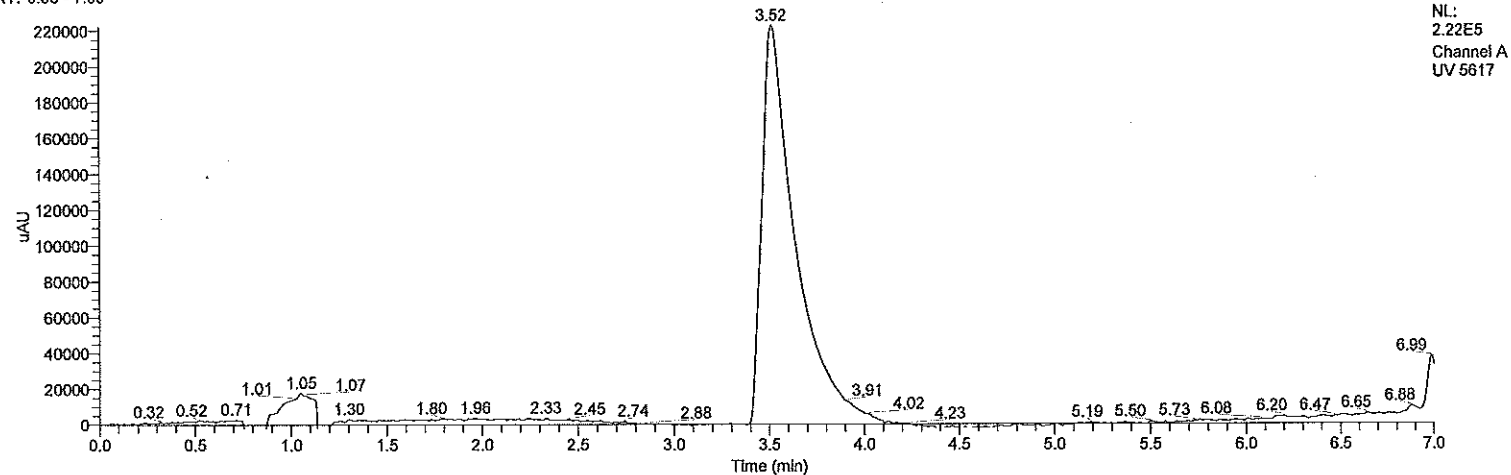
RT: 0.00 - 7.00



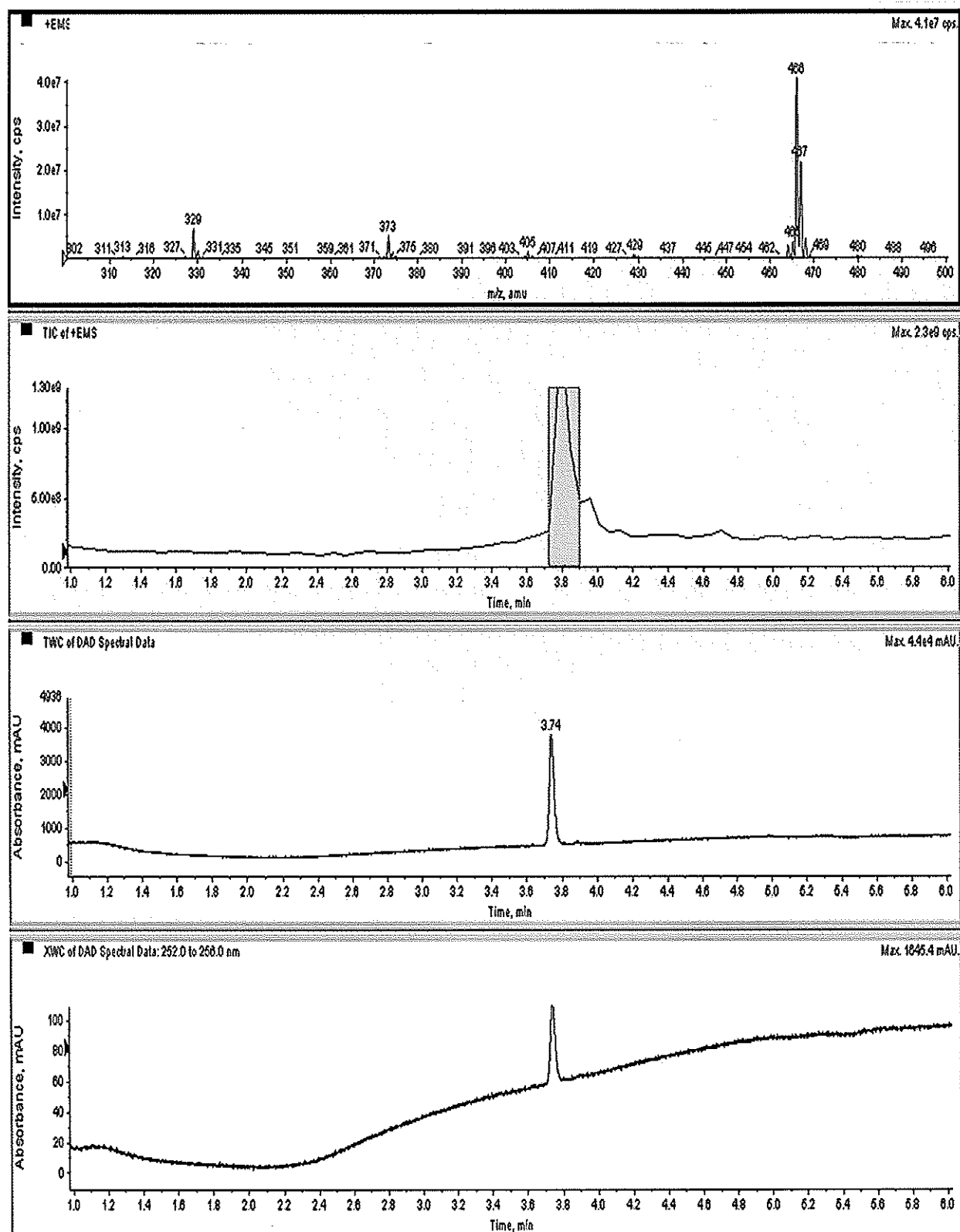
RT: 0.00 - 7.00



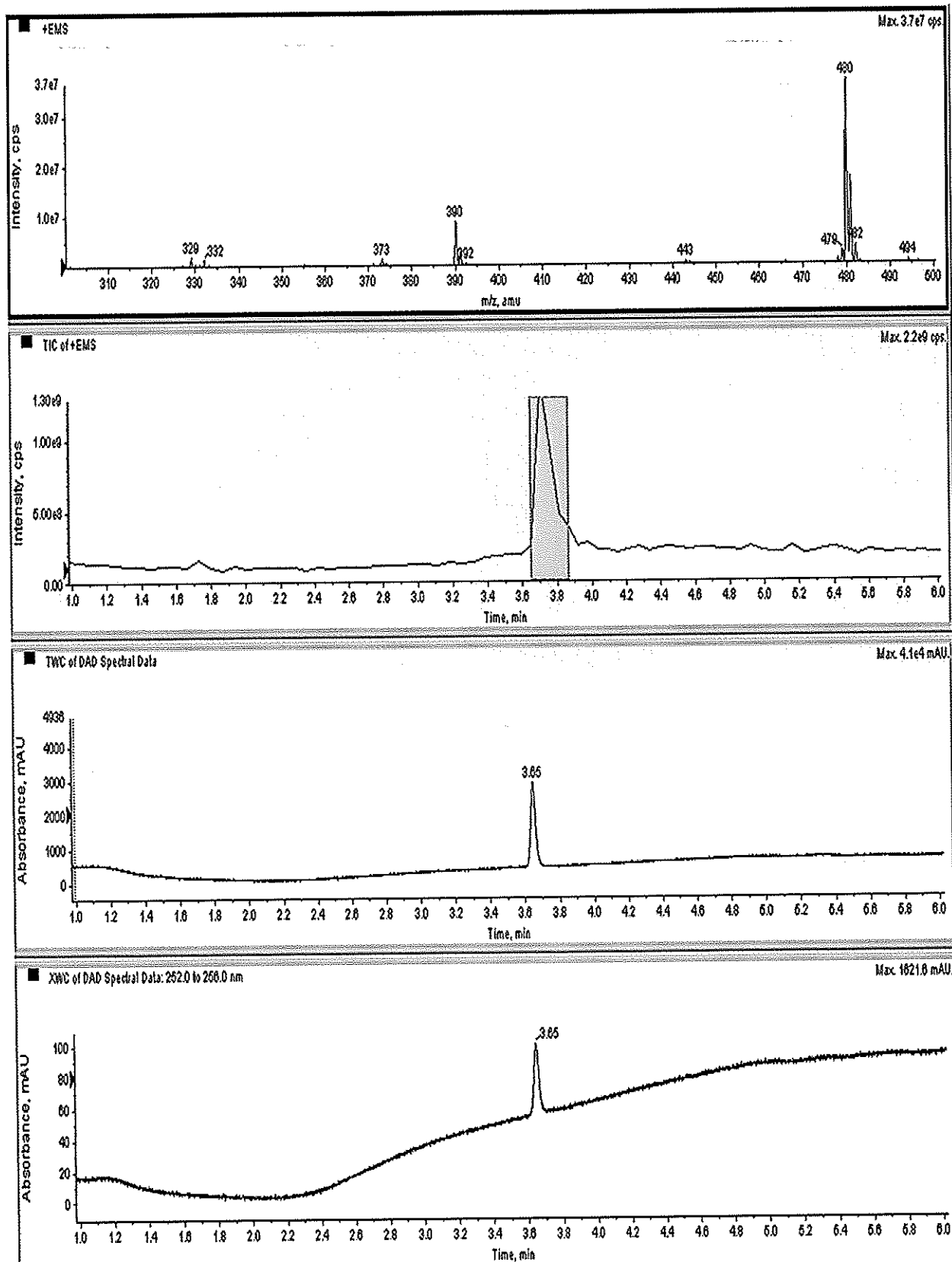
RT: 0.00 - 7.00



Compound 27 MW = 465.6

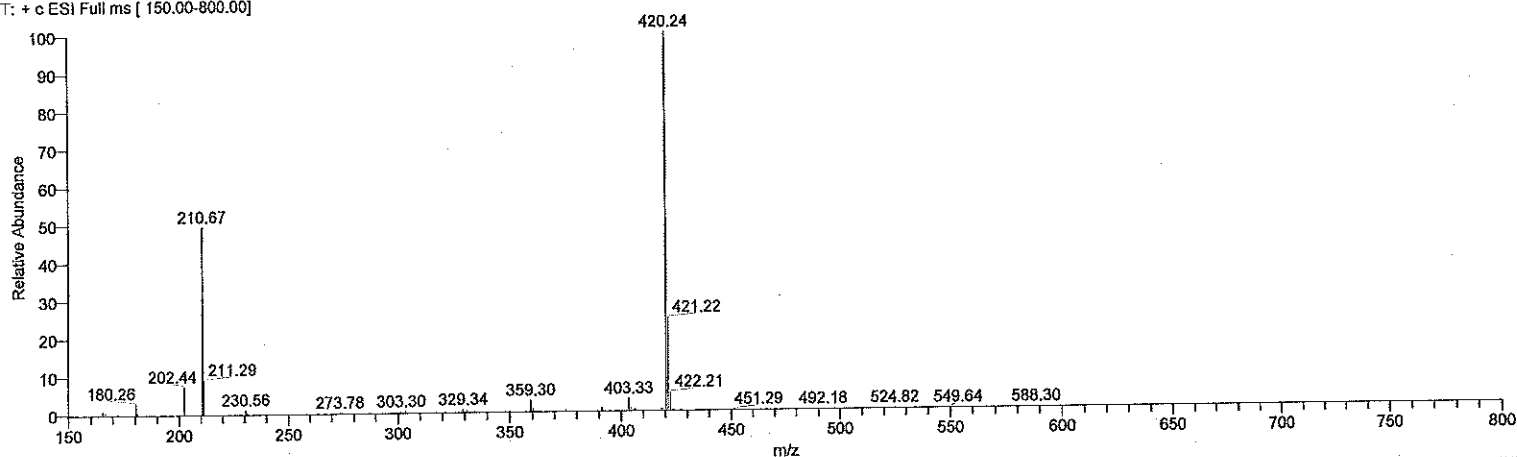


Compound 28 MW = 479.6

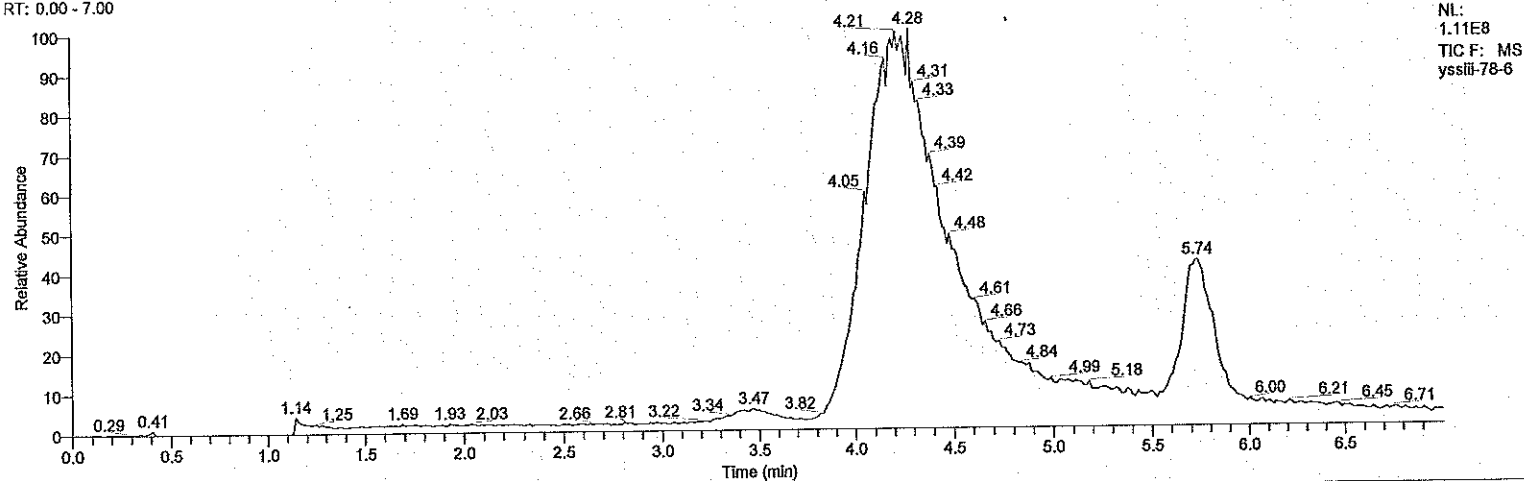


Compound 29

yssl-78-6 #324 RT: 4.24 AV: 1 NL: 4.75E7
T: + c ESI Full ms [150.00-800.00]

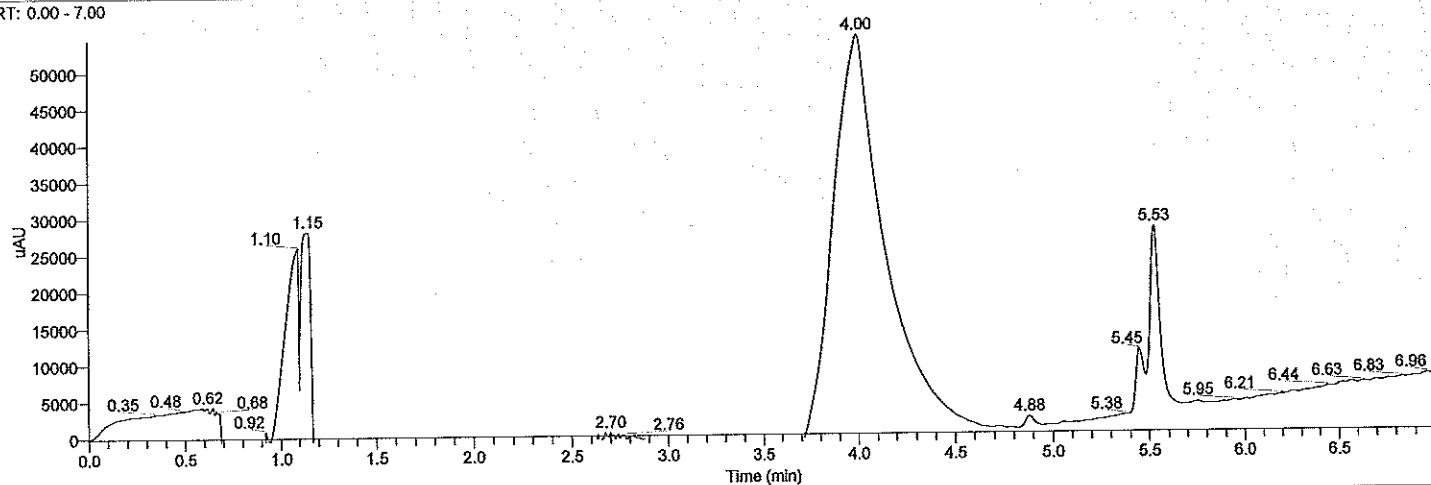


RT: 0.00 - 7.00



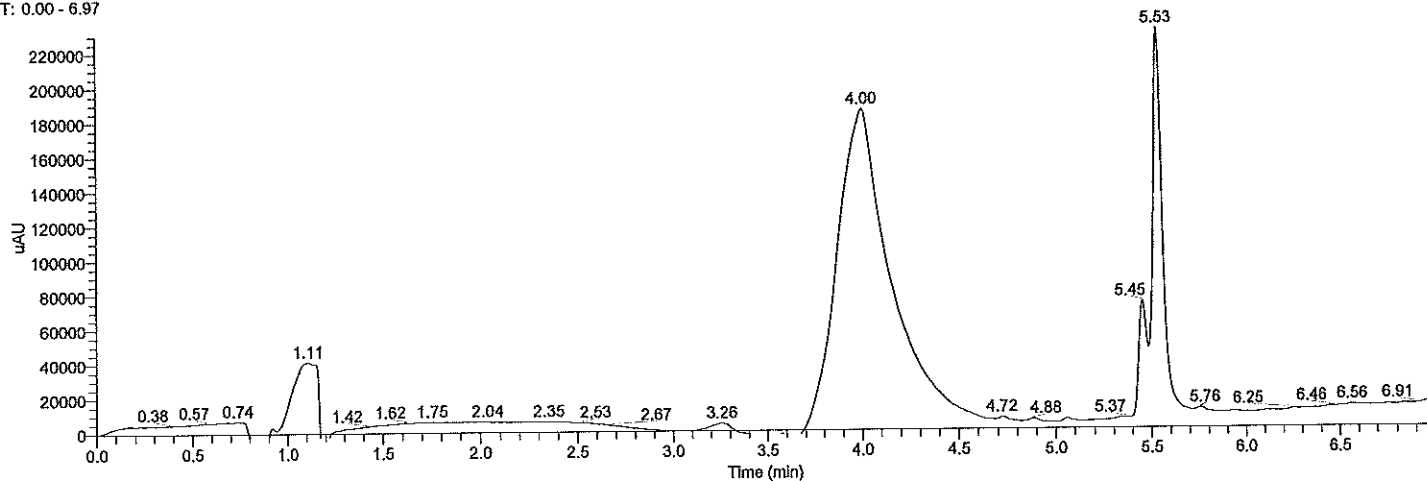
NL:
1.11E8
TIC F: MS
yssl-78-6

RT: 0.00 - 7.00



NL:
5.44E4
Total Scan
PDA
yssl-78-6

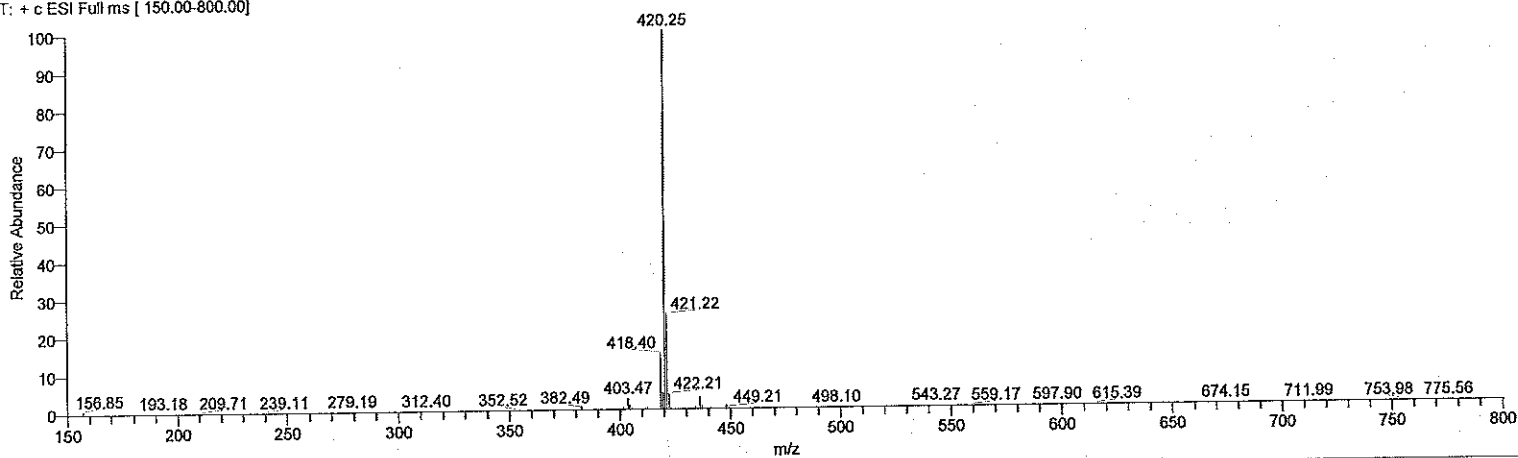
RT: 0.00 - 6.97



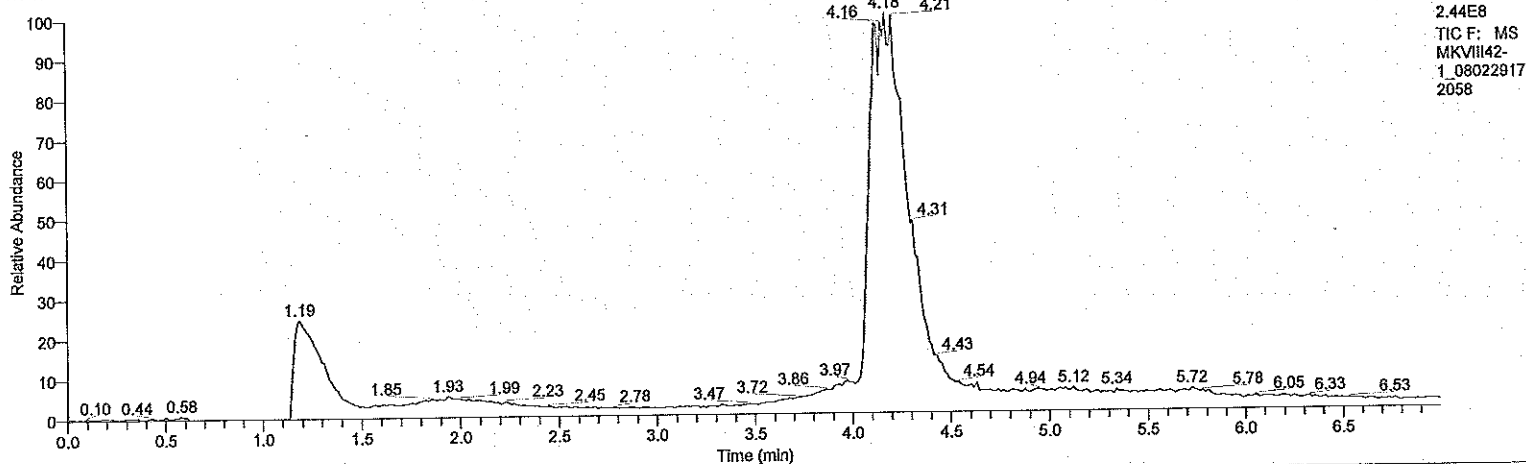
NL:
2.30E5
Channel A
UV
yssl-78-6

Compound 30

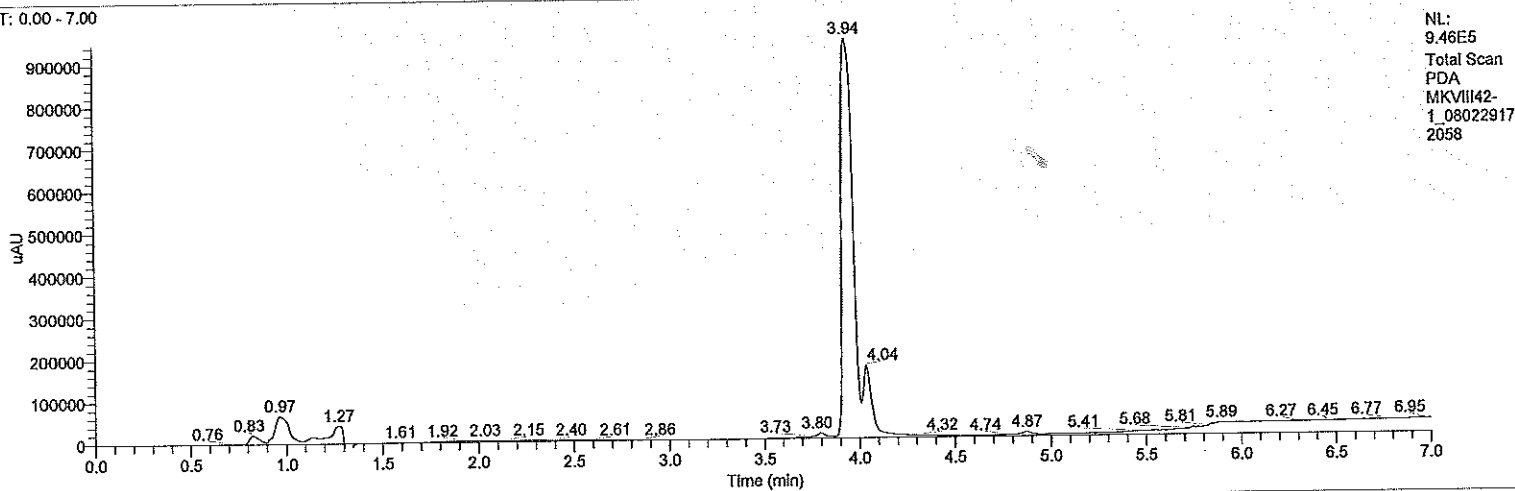
MKVIII42-1_080229172058 #304-343 RT: 4.03-4.48 AV: 40 NL: 7.43E7
T: + c ESI Full ms [150.00-800.00]



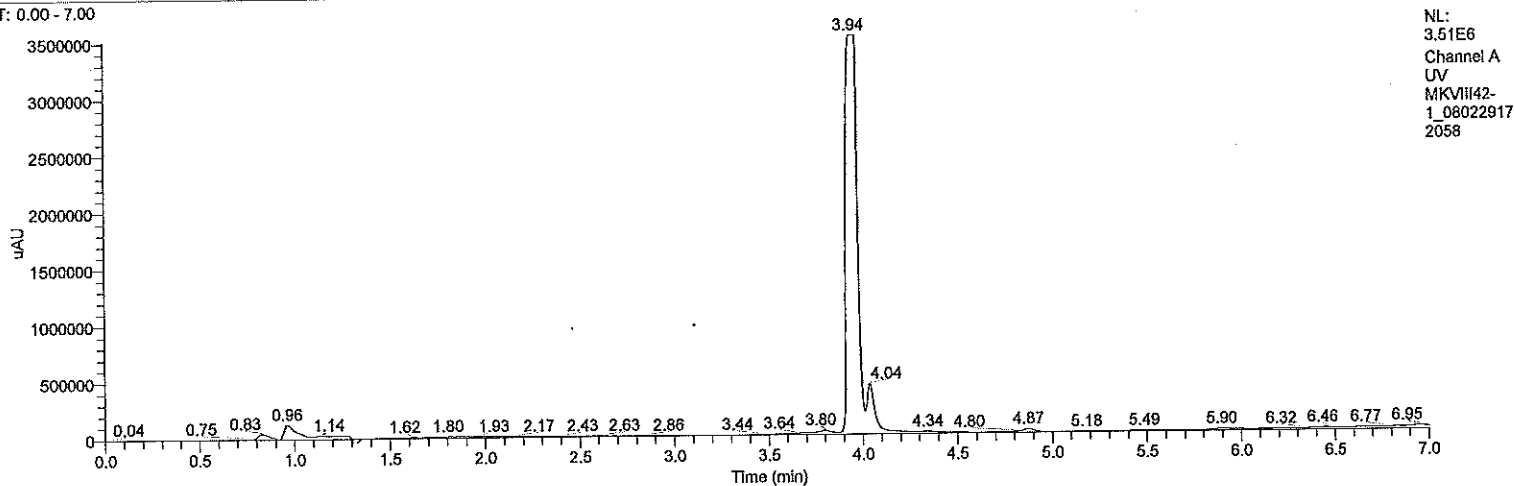
RT: 0.00 - 7.00



RT: 0.00 - 7.00

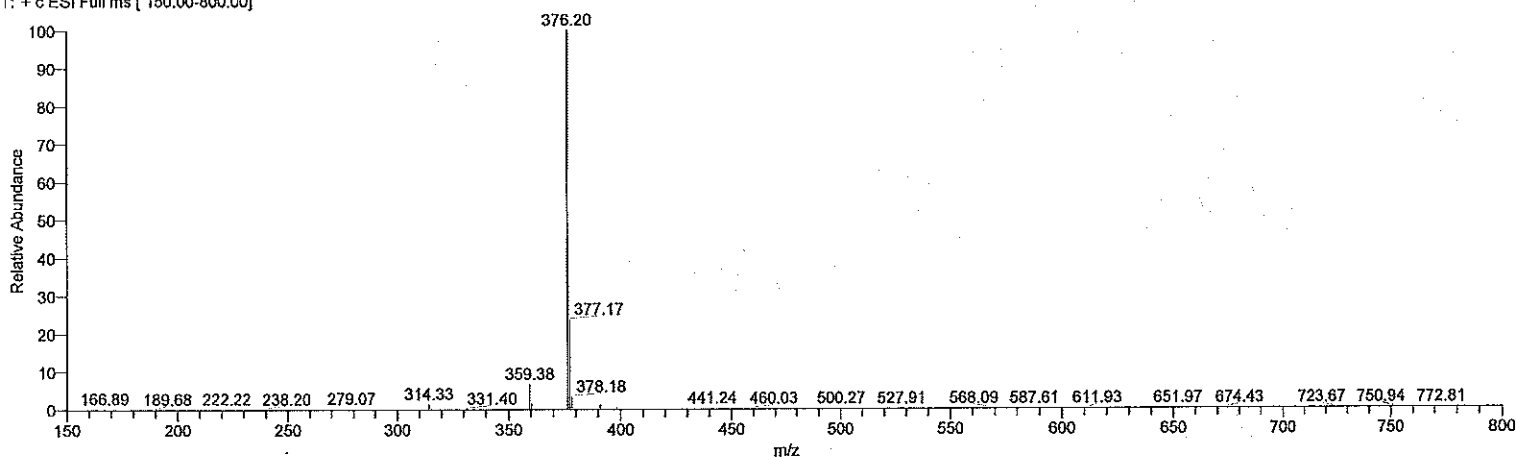


RT: 0.00 - 7.00

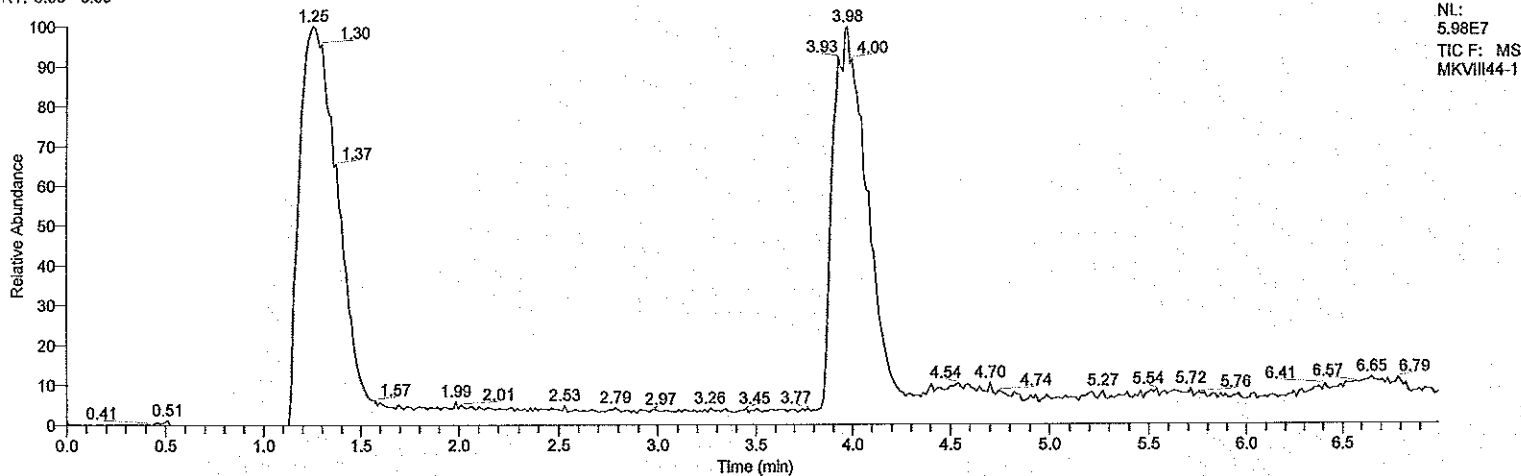


Compound 31

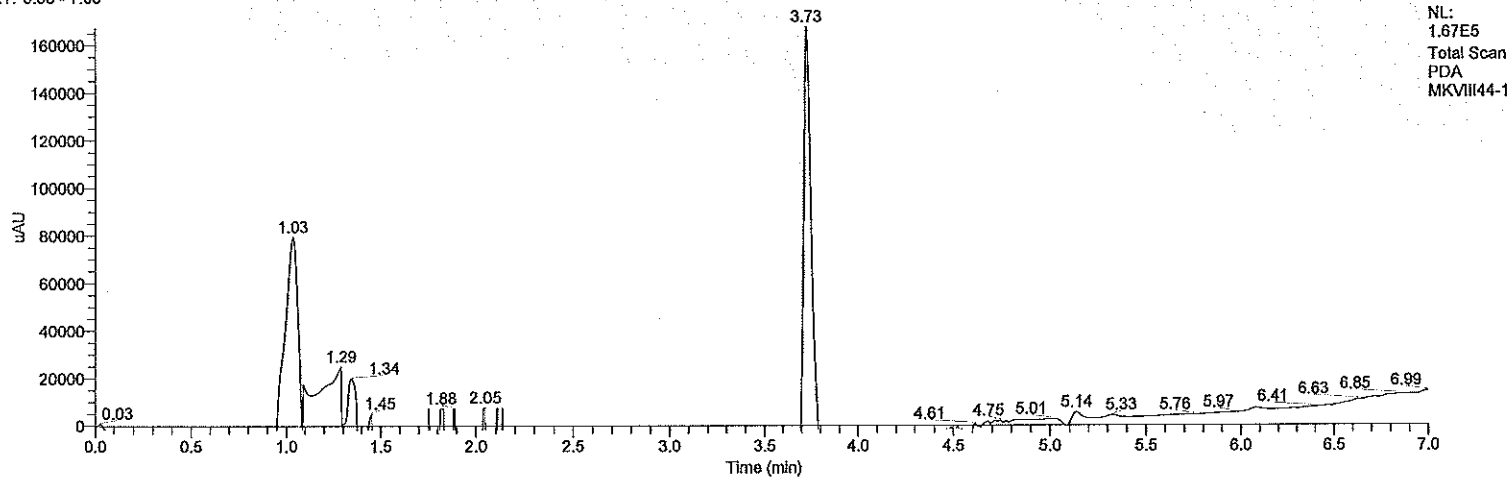
MKVIII44-1 #294-320 RT: 3.85-4.18 AV: 27 NL: 2.45E7
T: + e ESI Full ms [150.00-800.00]



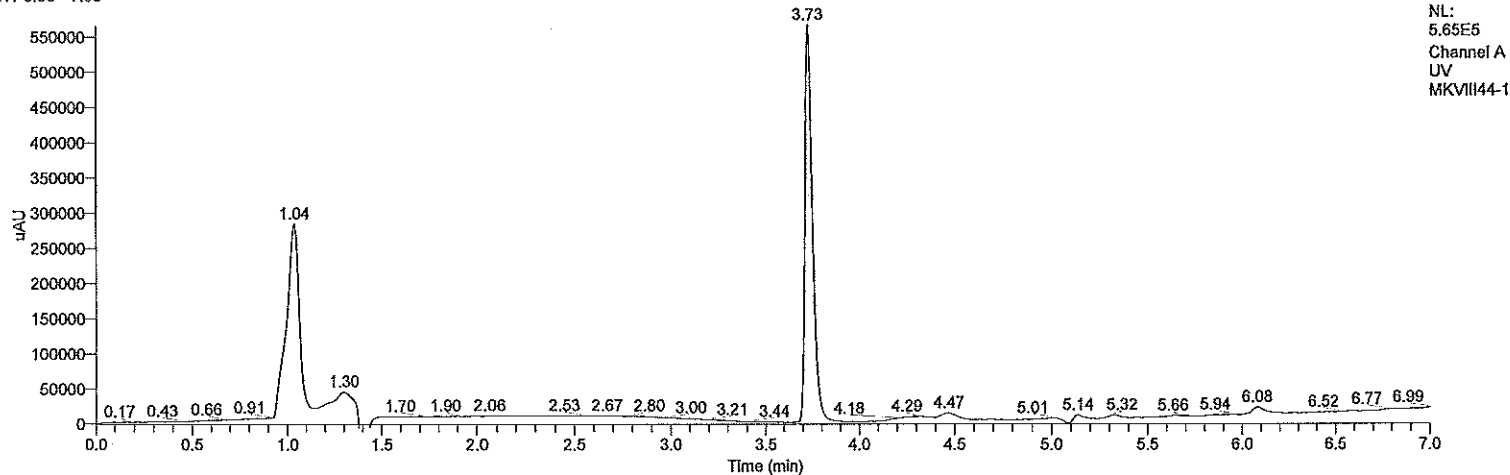
RT: 0.00 - 6.99



RT: 0.00 - 7.00

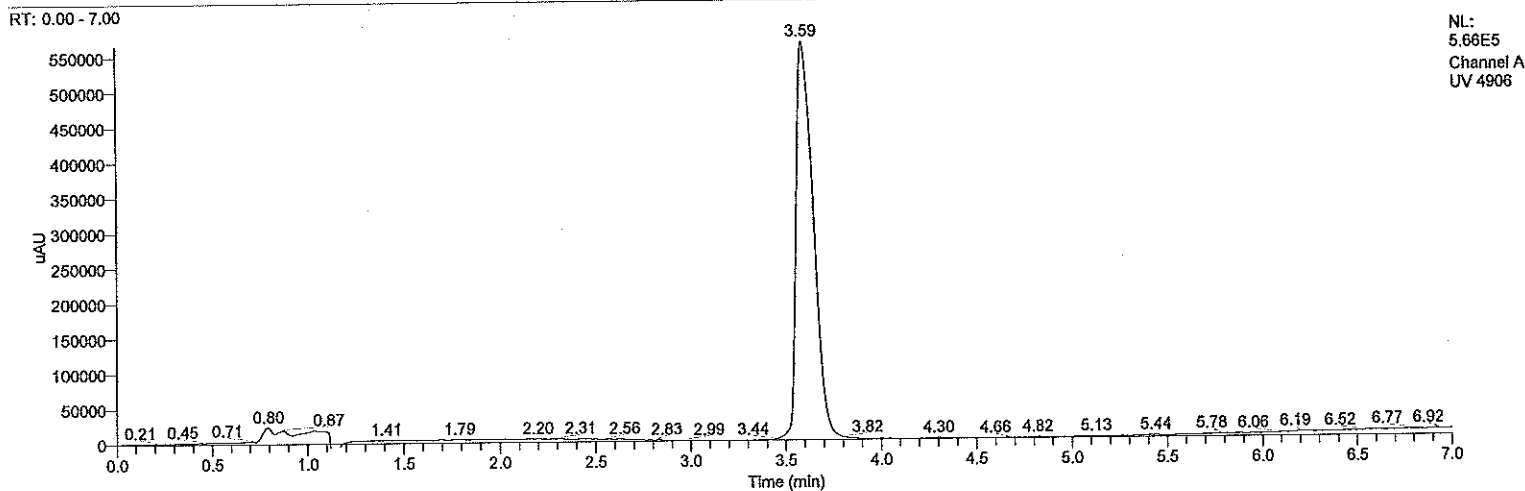
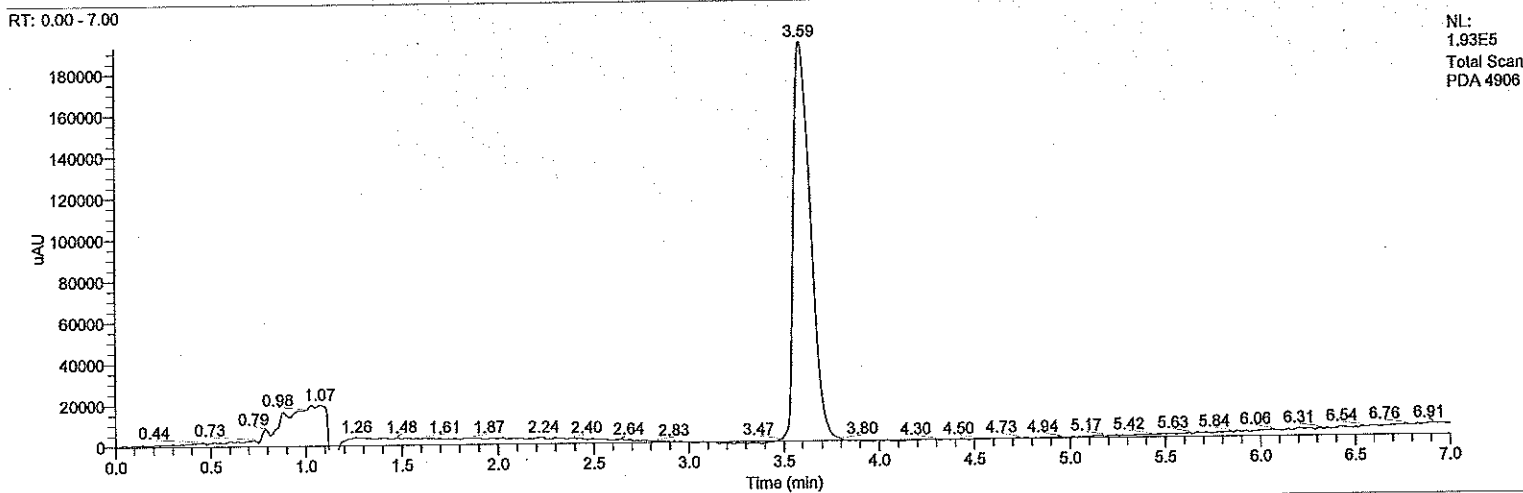
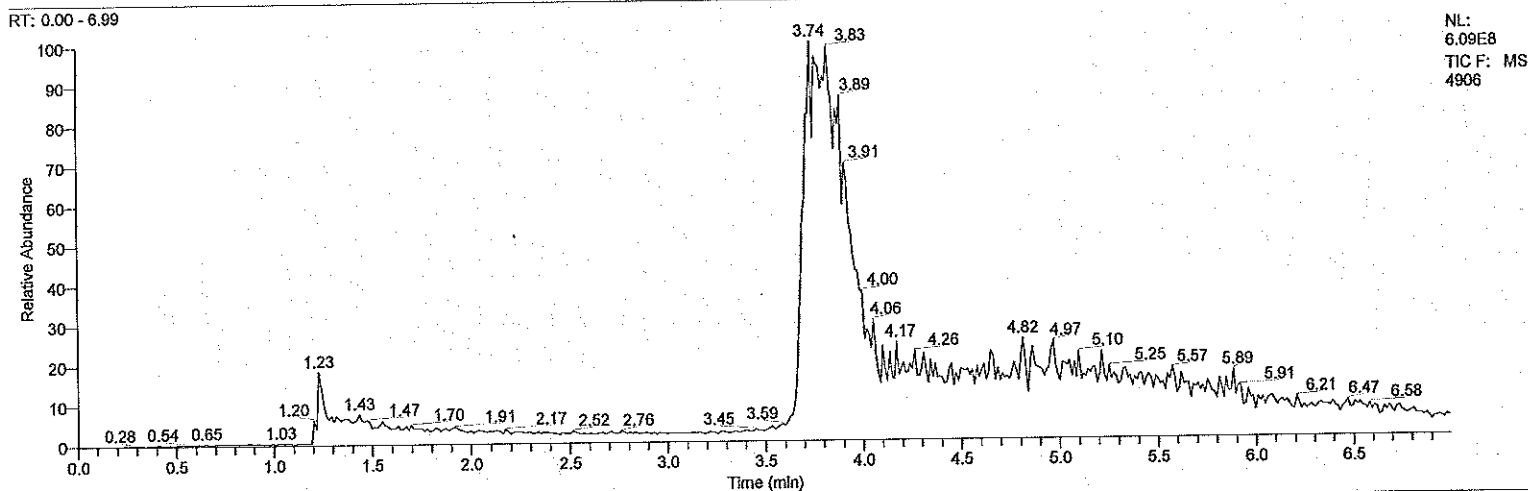
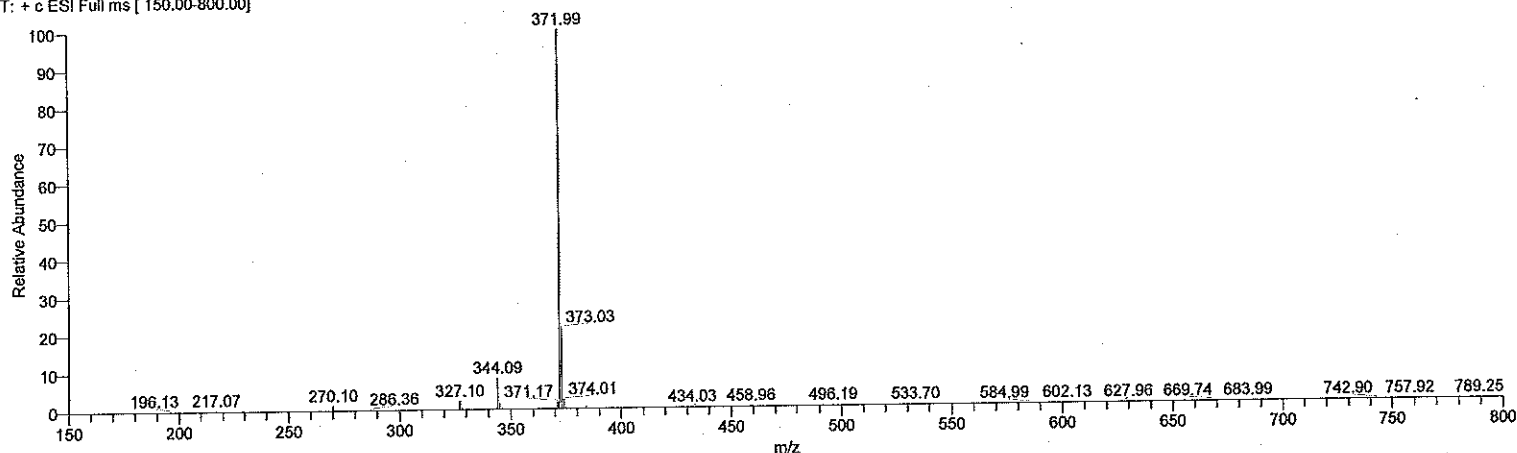


RT: 0.00 - 7.00



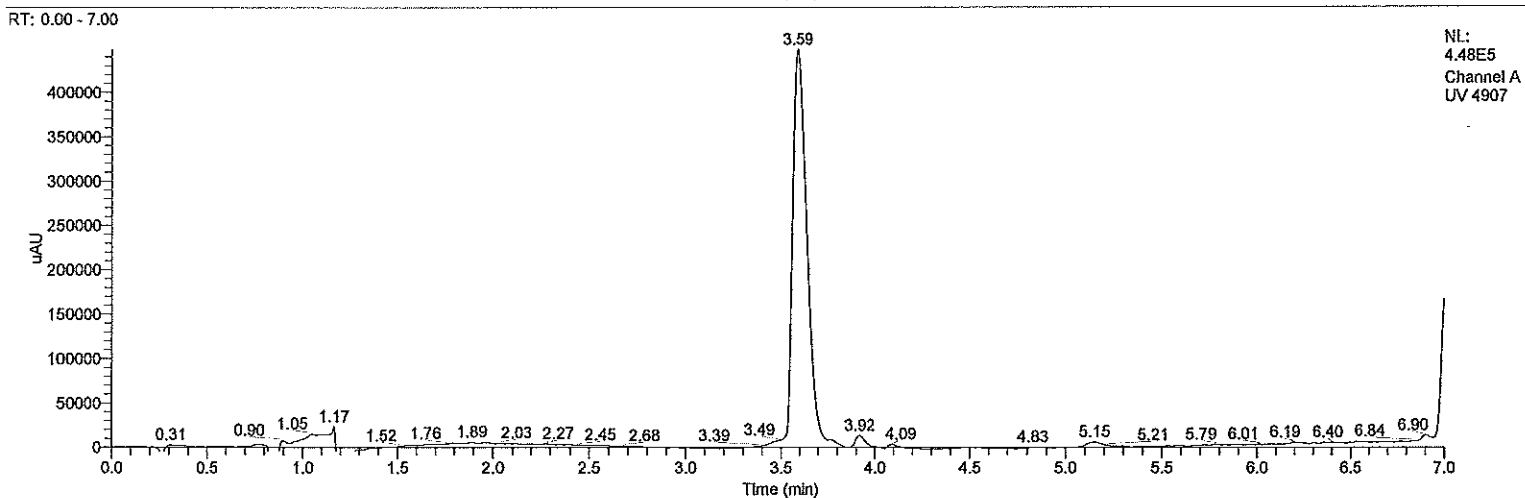
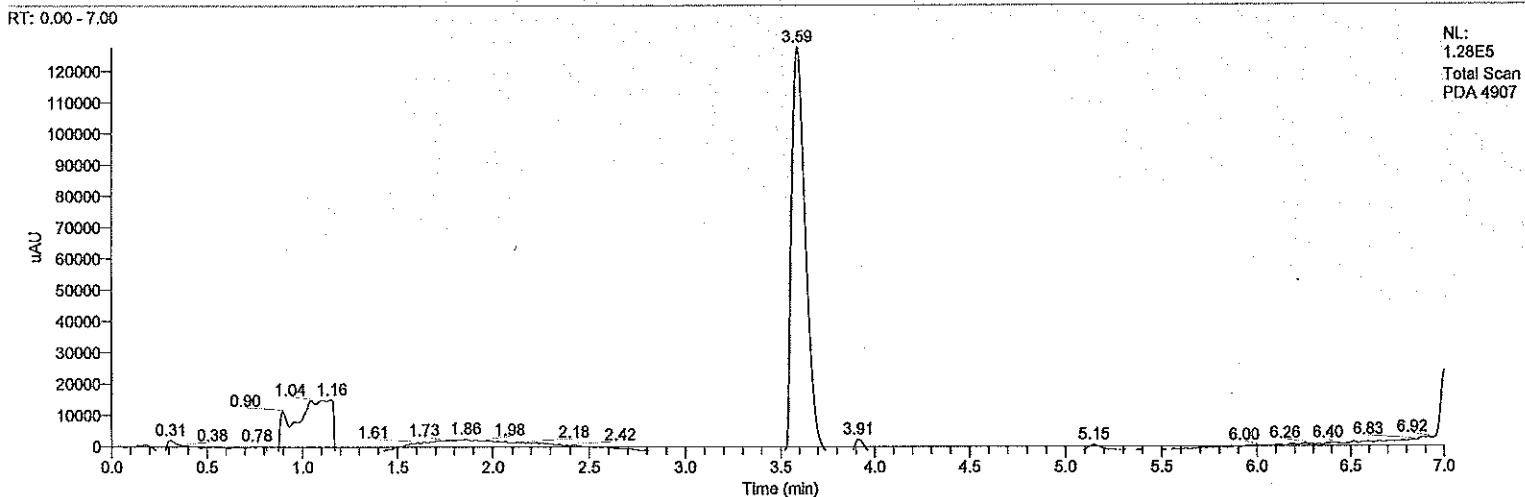
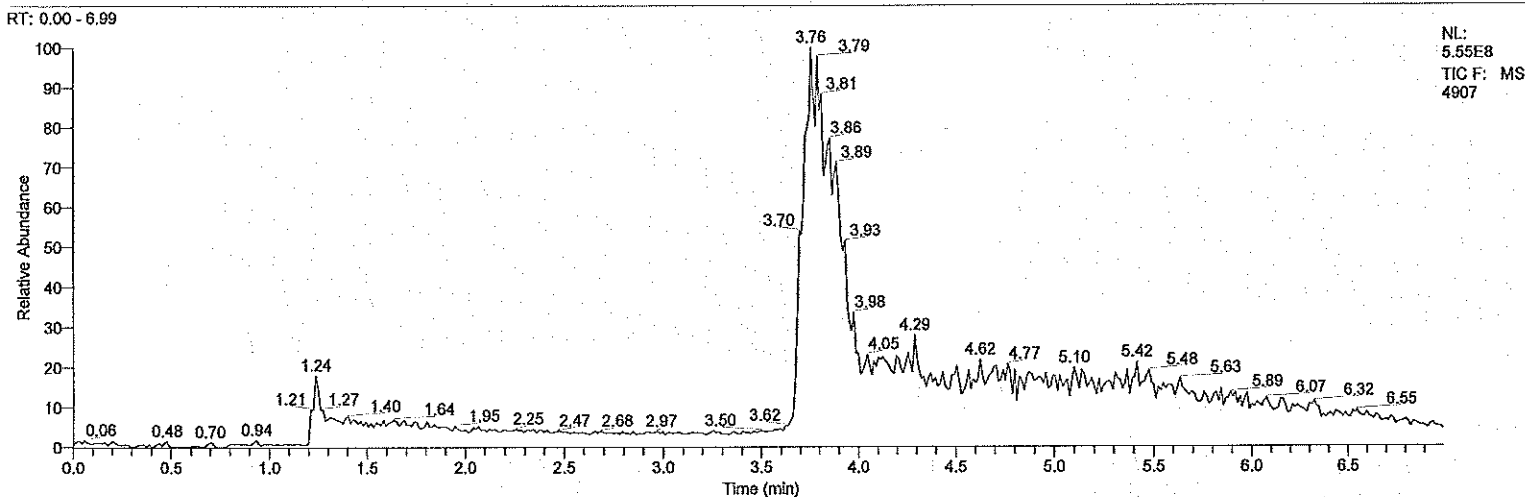
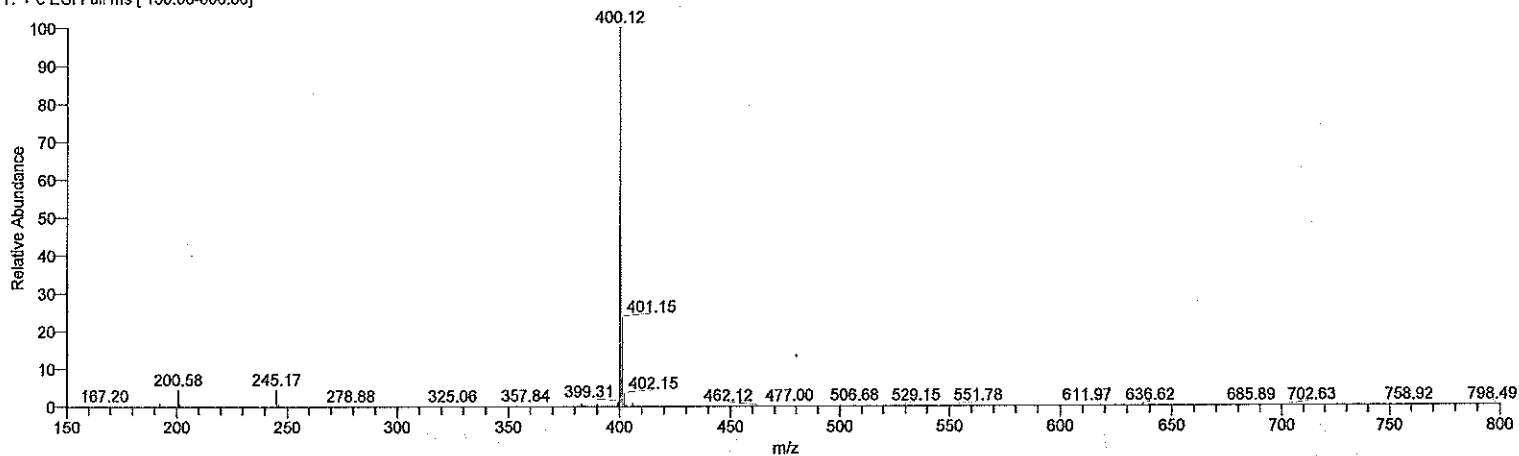
Compound 32

4906 #270-314 RT: 3.60-4.09 AV: 45 NL: 2.11E8
T: + c ESI Full ms [150.00-800.00]

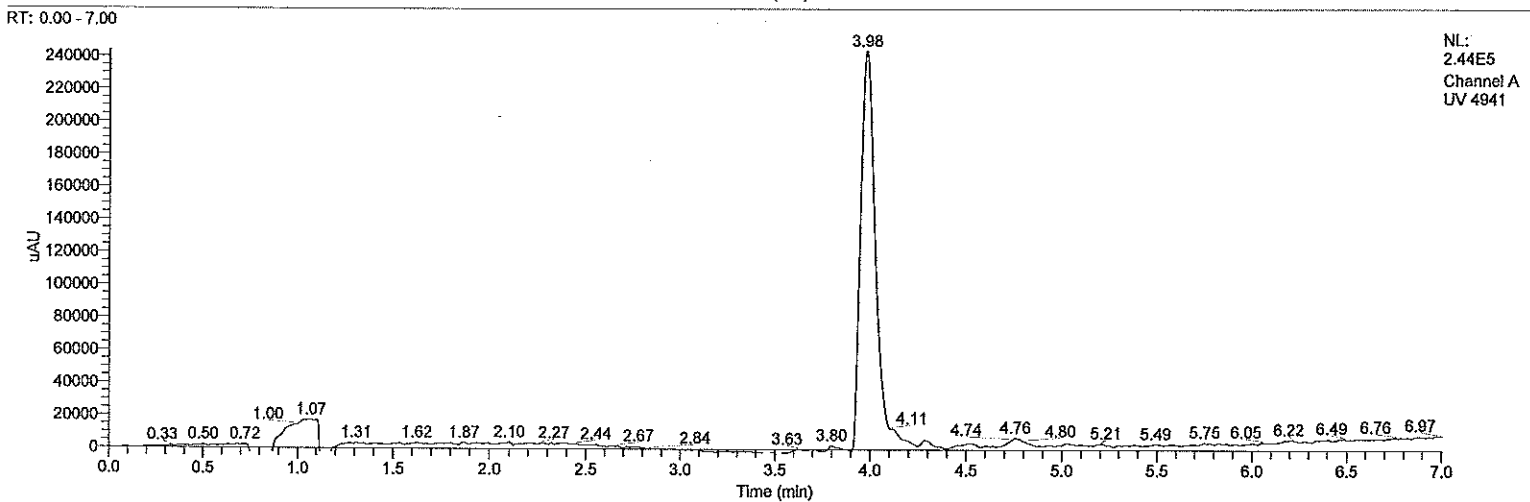
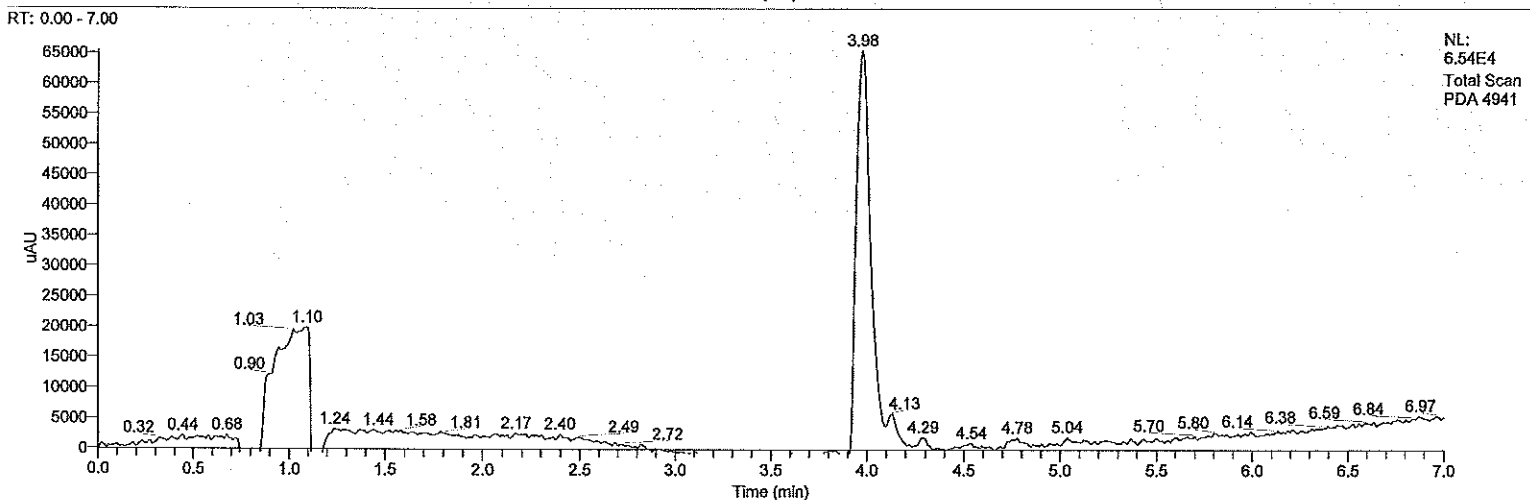
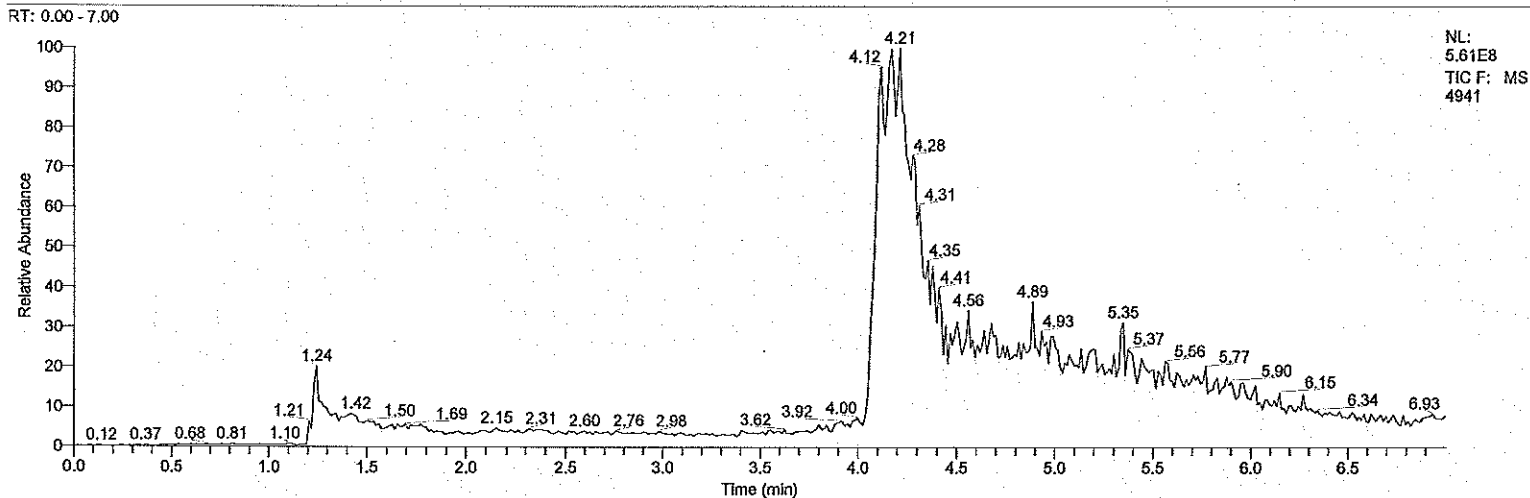
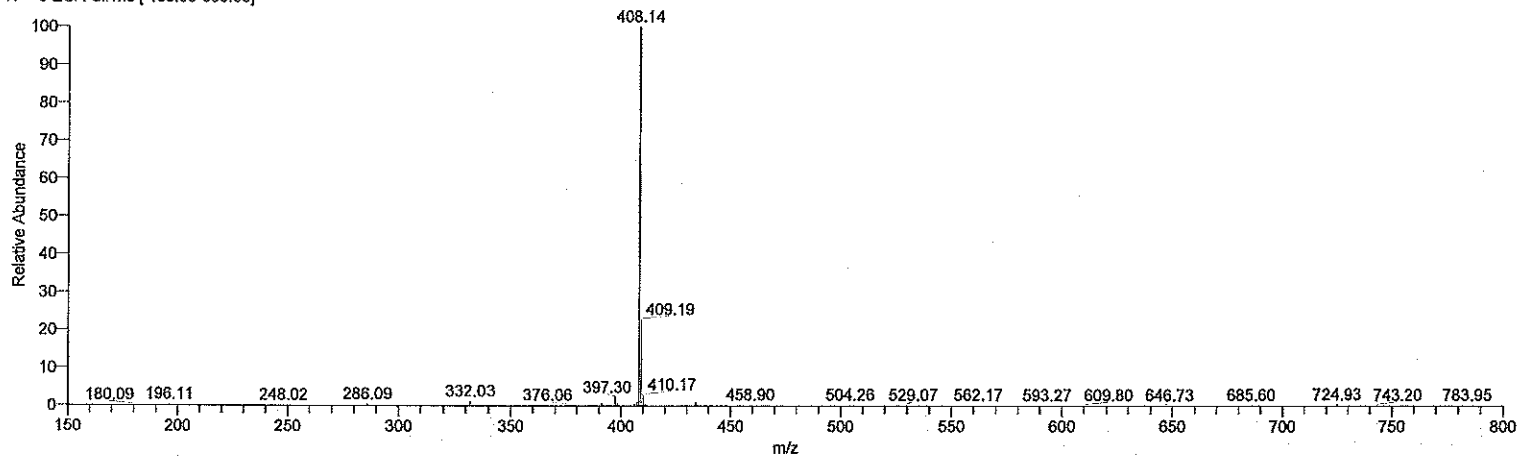


Compound 33

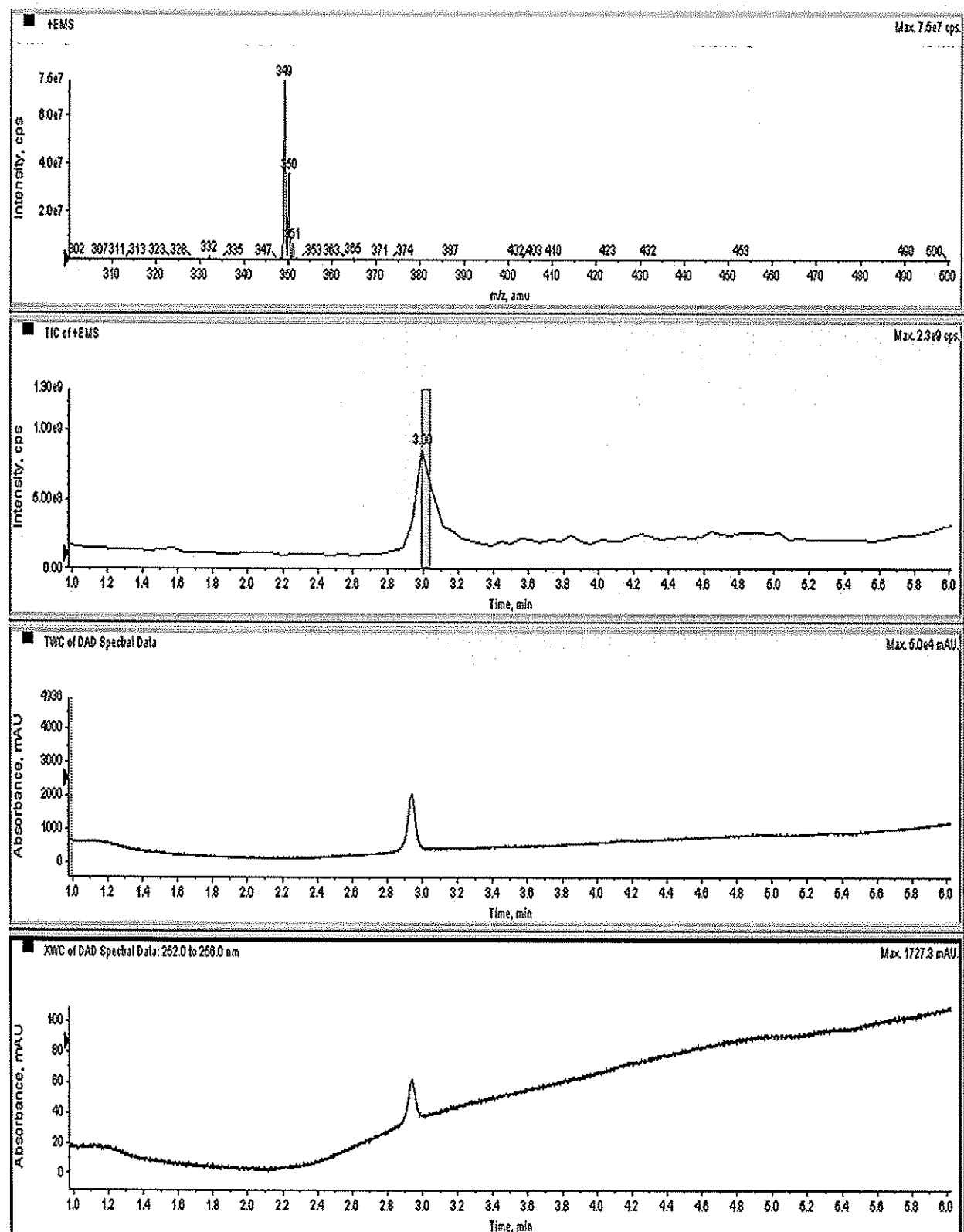
4907 #274-308 RT: 3.62-4.00 AV: 35 NL: 1.95E8
T: + c ESI Full ms [150.00-800.00]



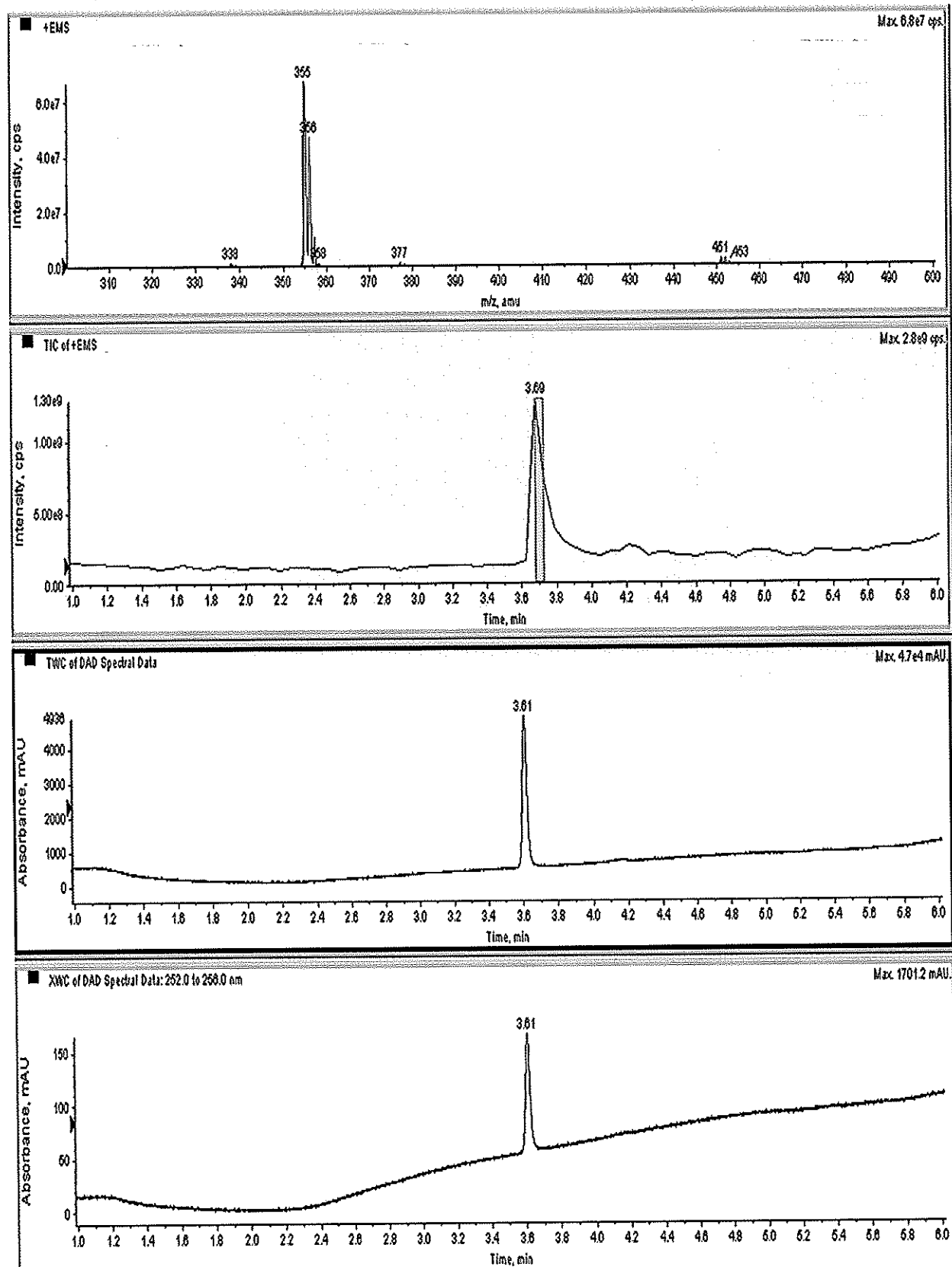
4941 #303-344 RT: 4.02-4.48 AV: 42 NL: 2.07E8
T: + c ESI Full ms [150.00-800.00]



Compound 35 MW= 348.4

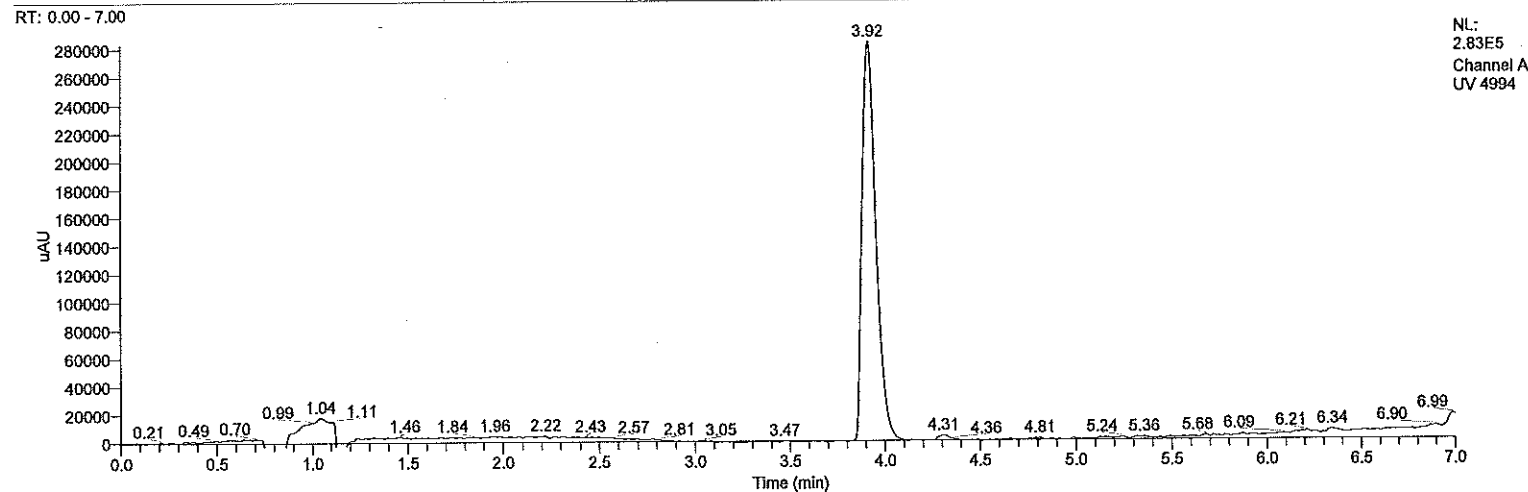
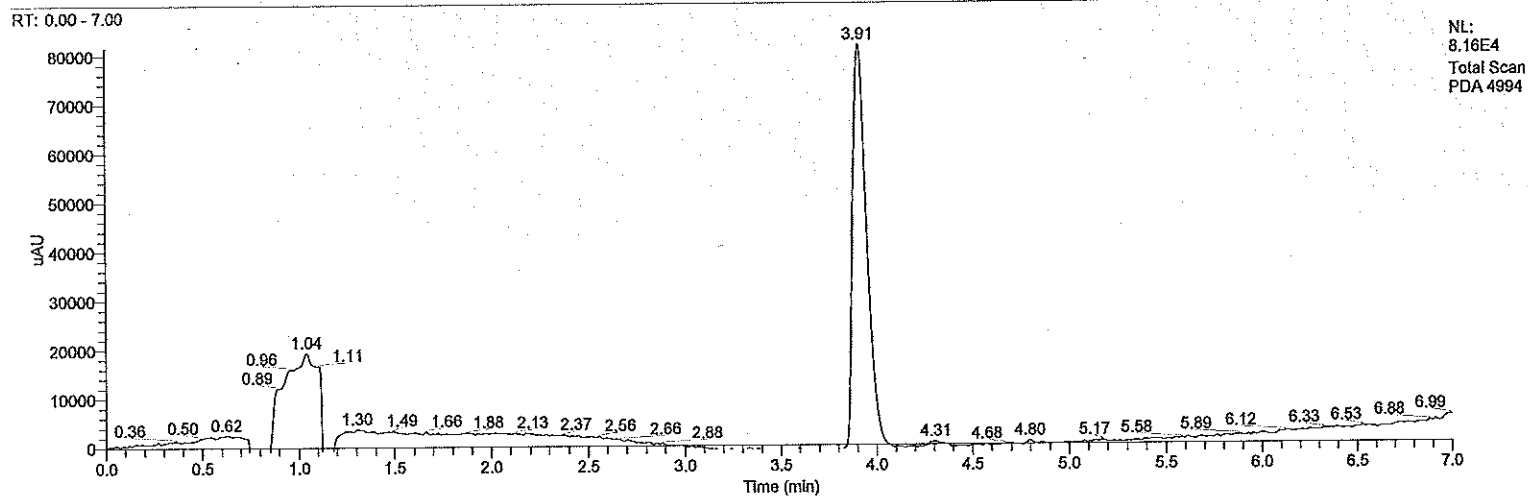
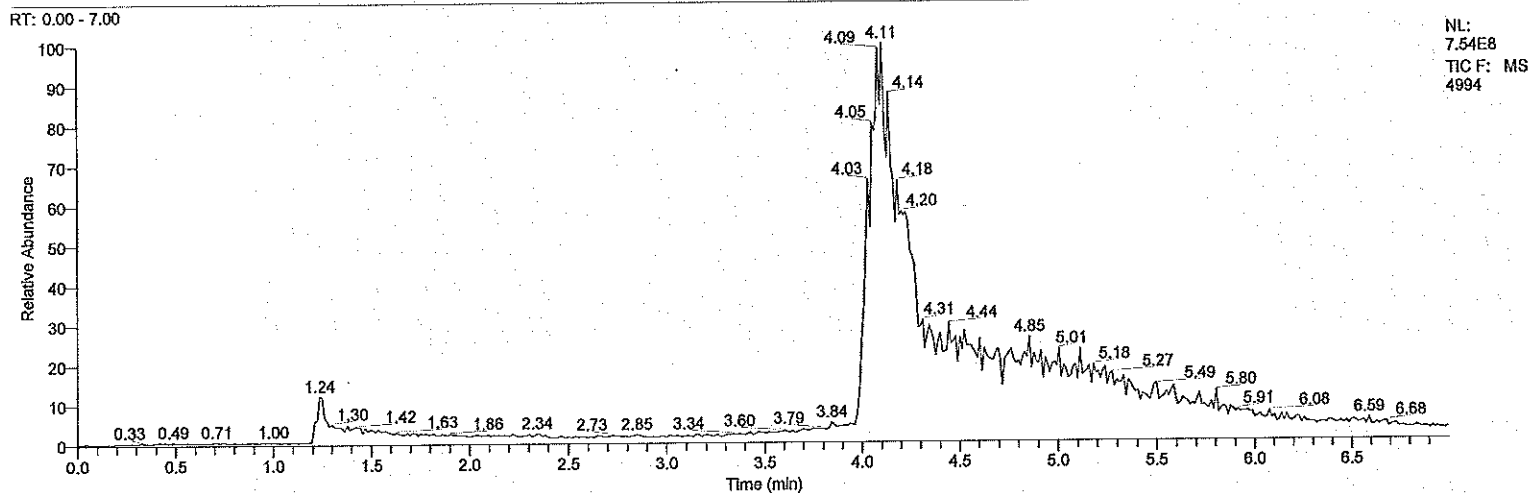
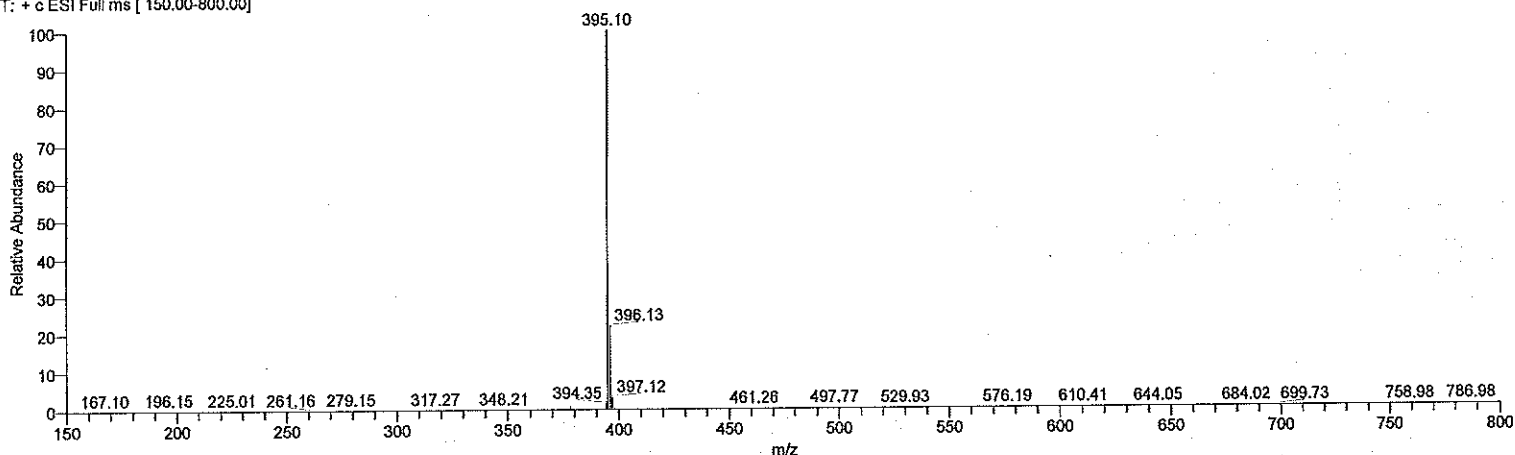


Compound 36 MW=354.4

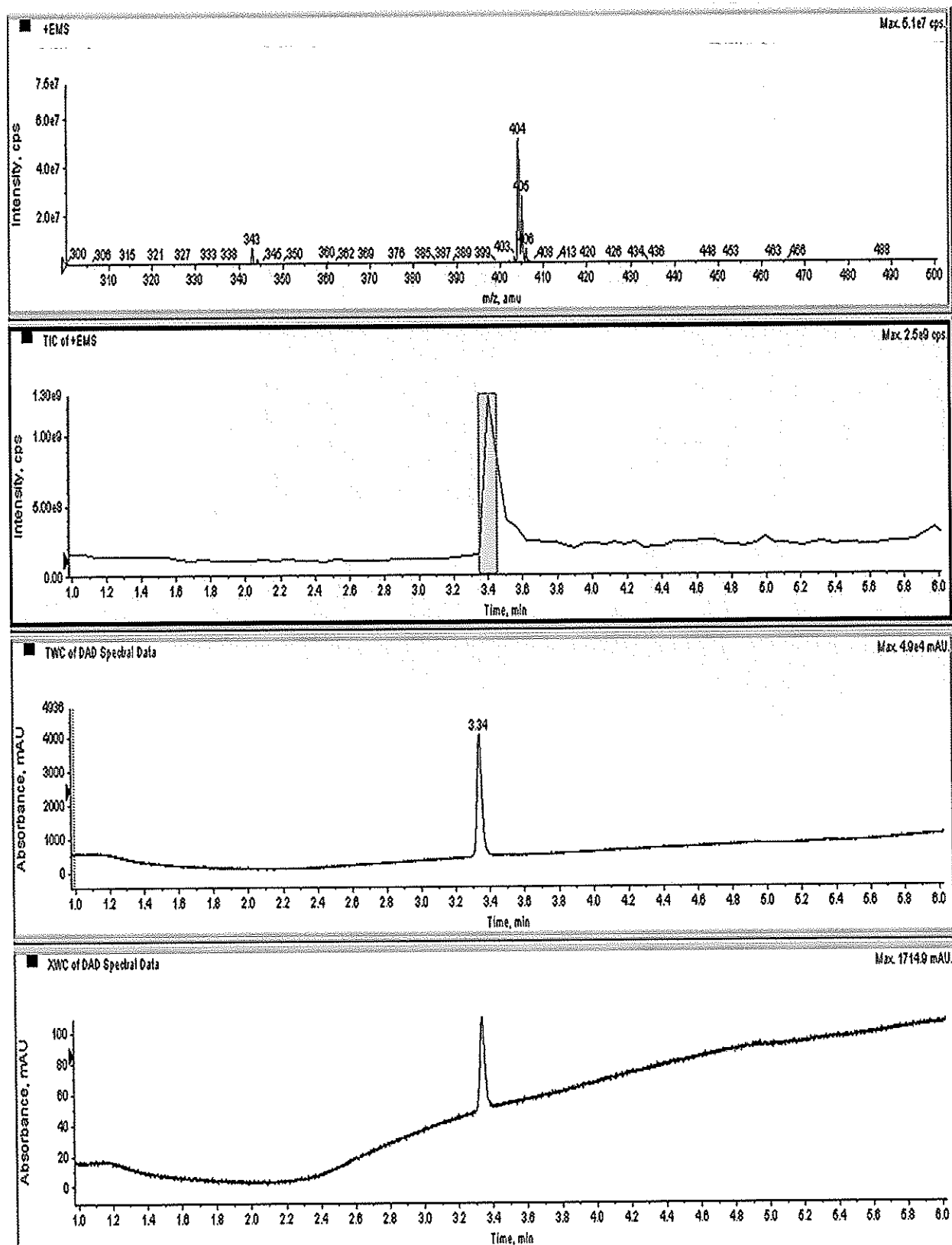


Compound 37

4994 #295-332 RT: 3.95-4.36 AV: 38 NL: 2.75E8
T: + c ESI Full ms [150.00-800.00]

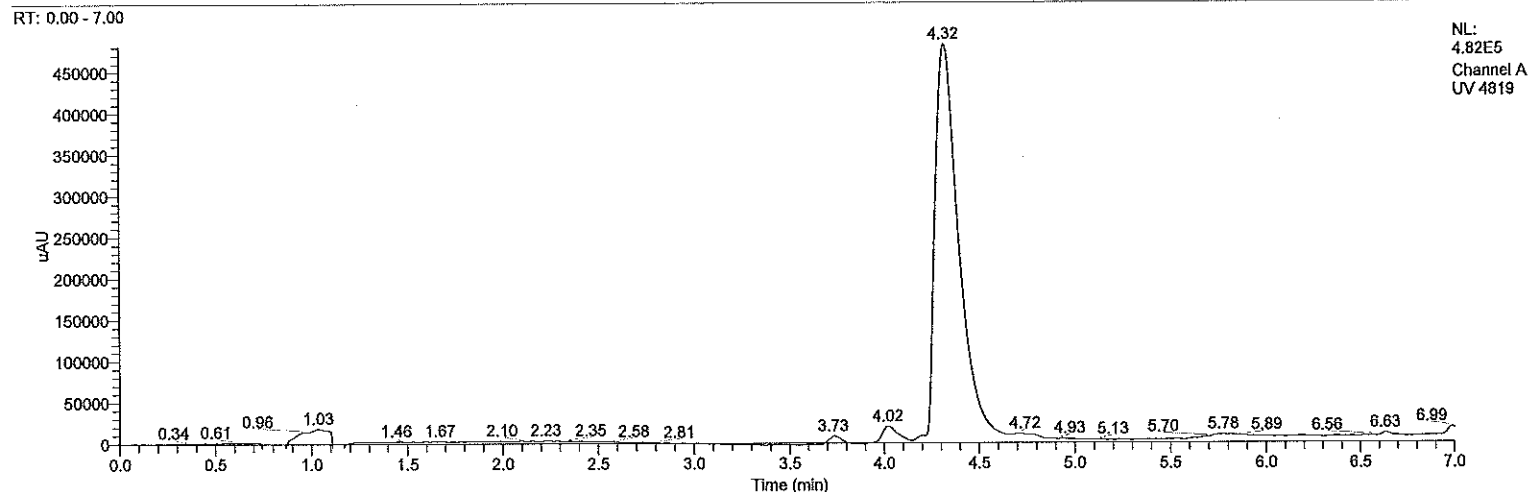
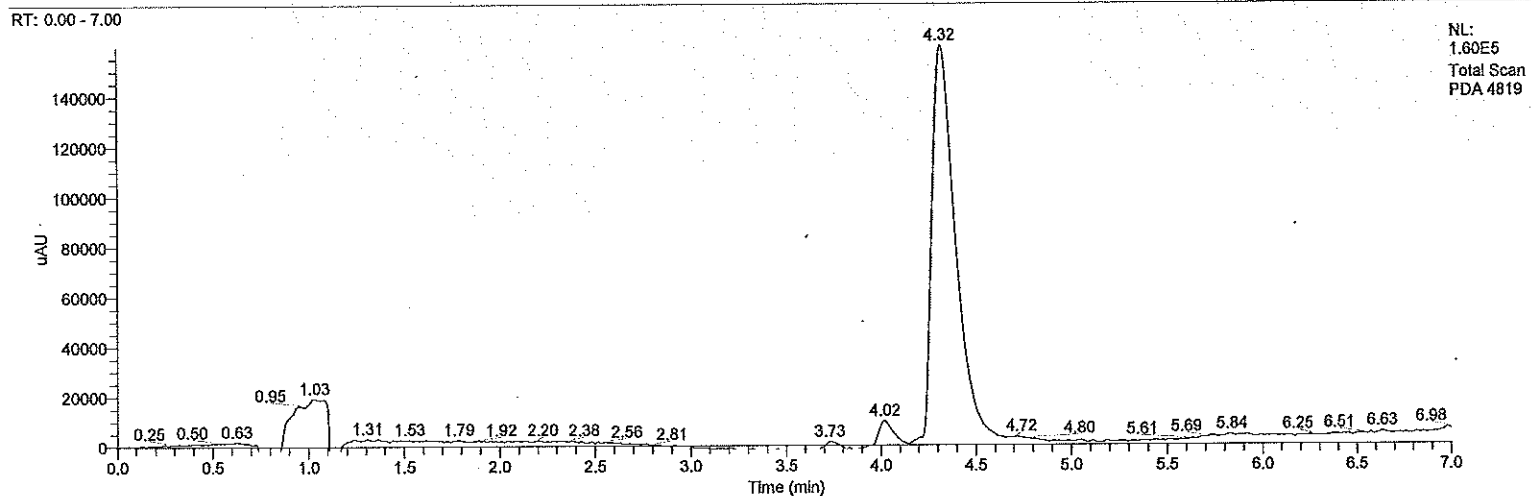
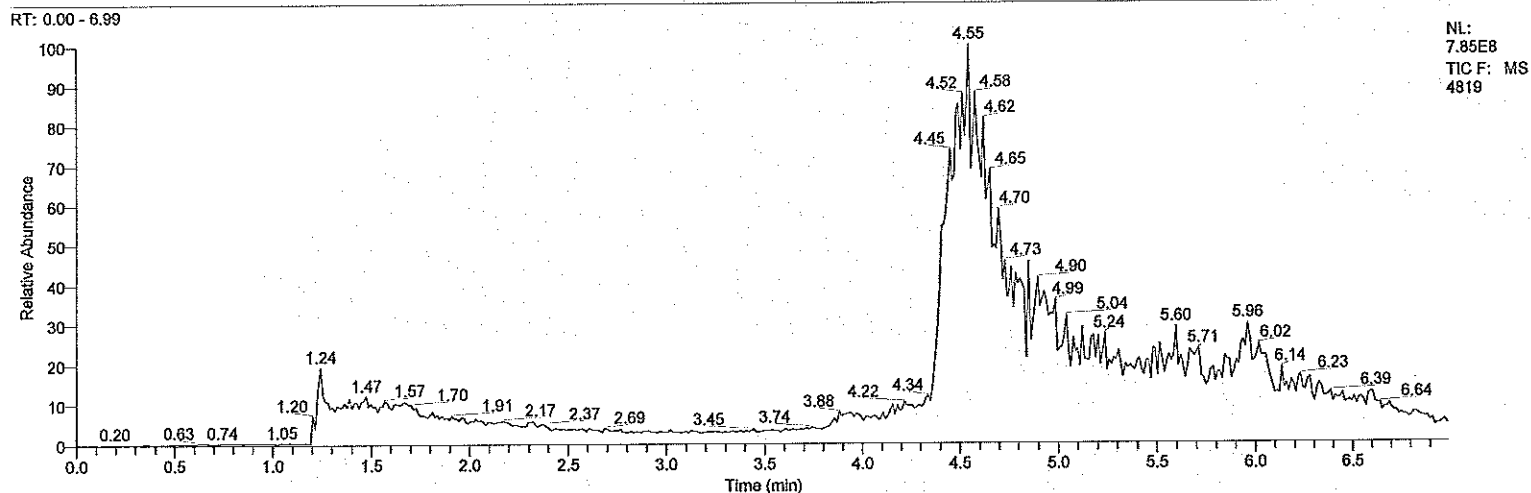
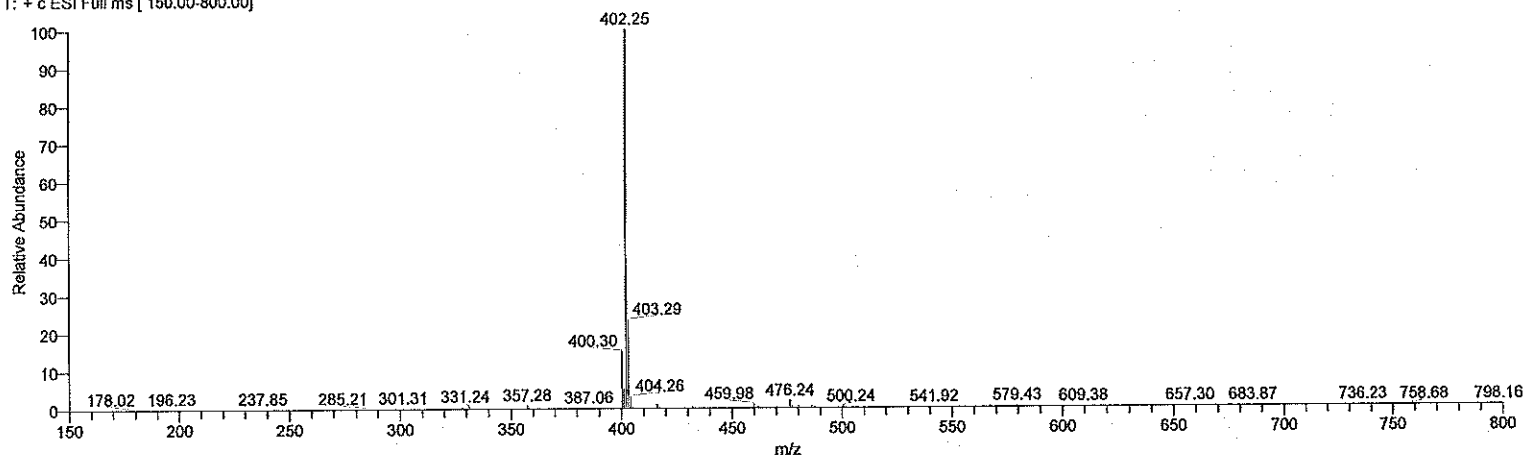


Compound 38 MW = 403.4

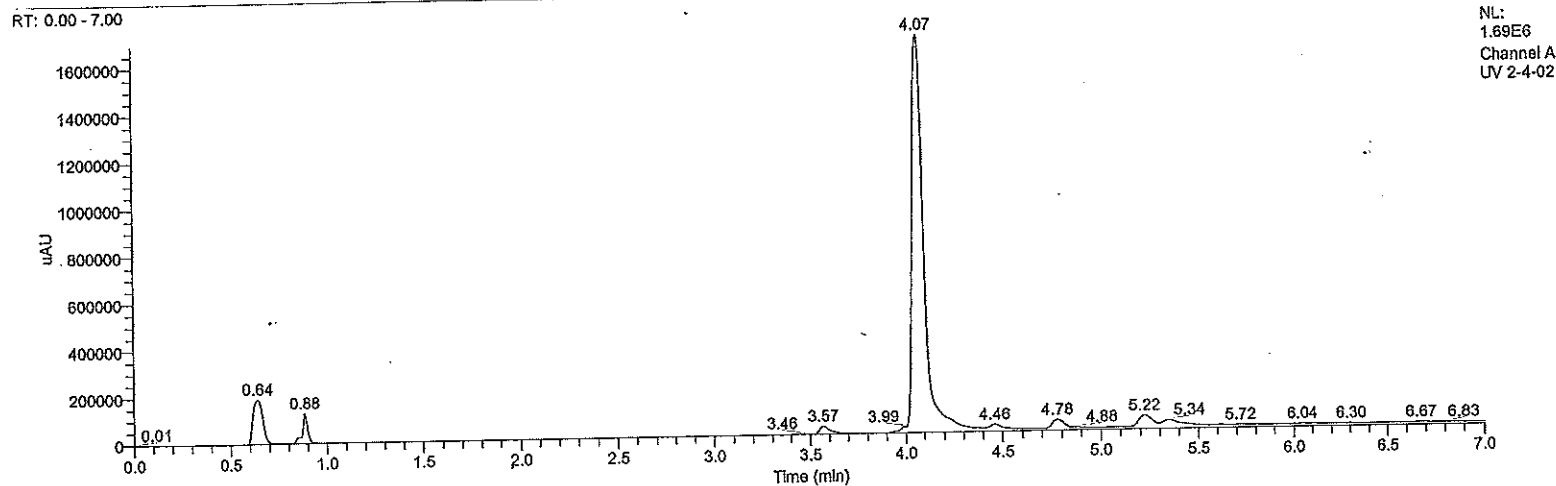
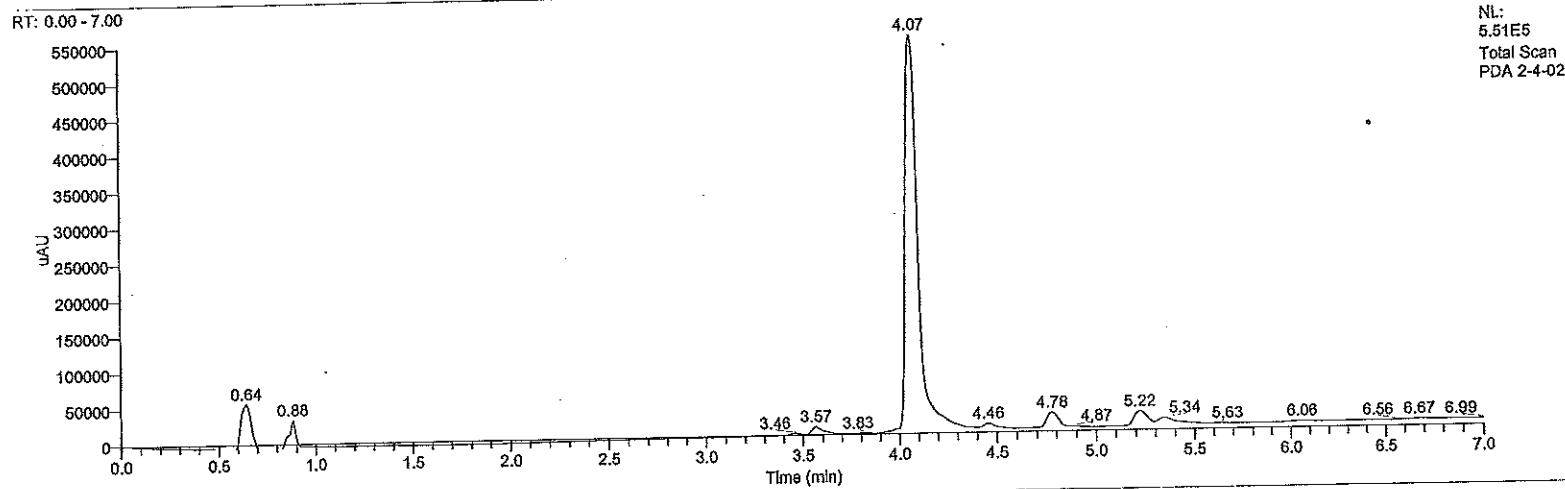
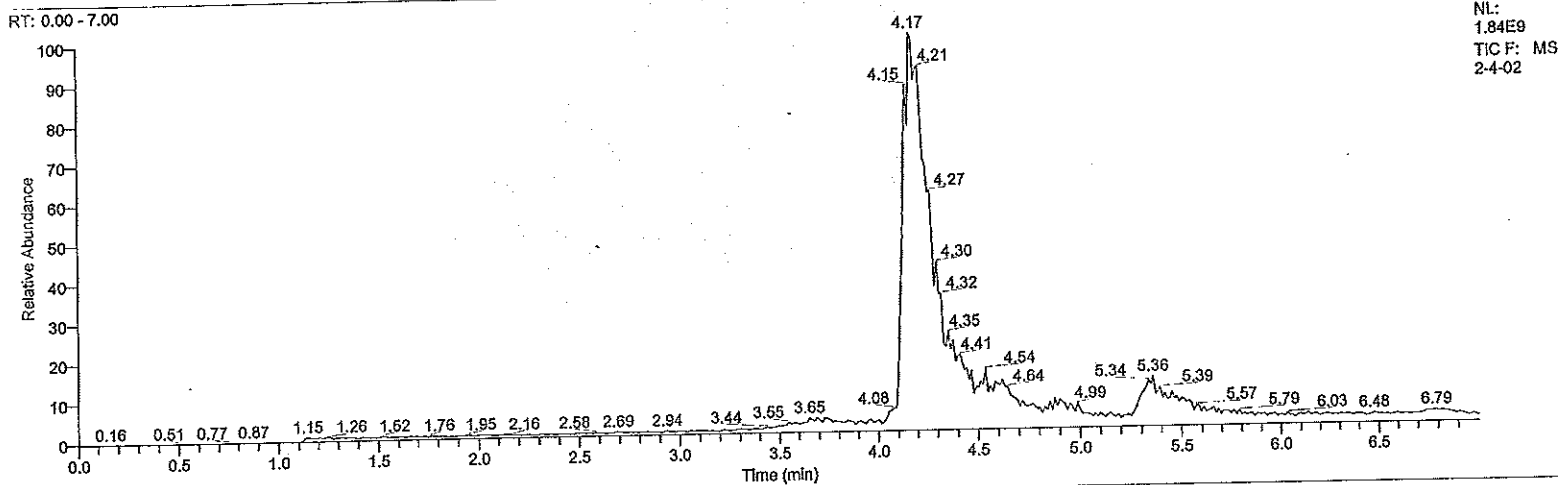
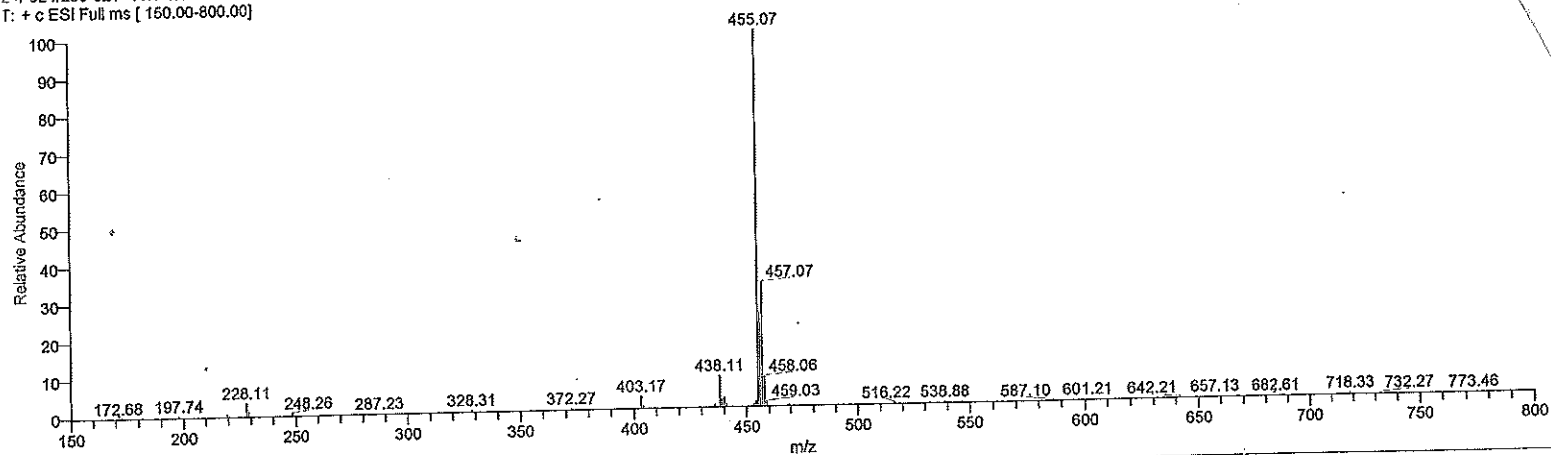


Compound 40

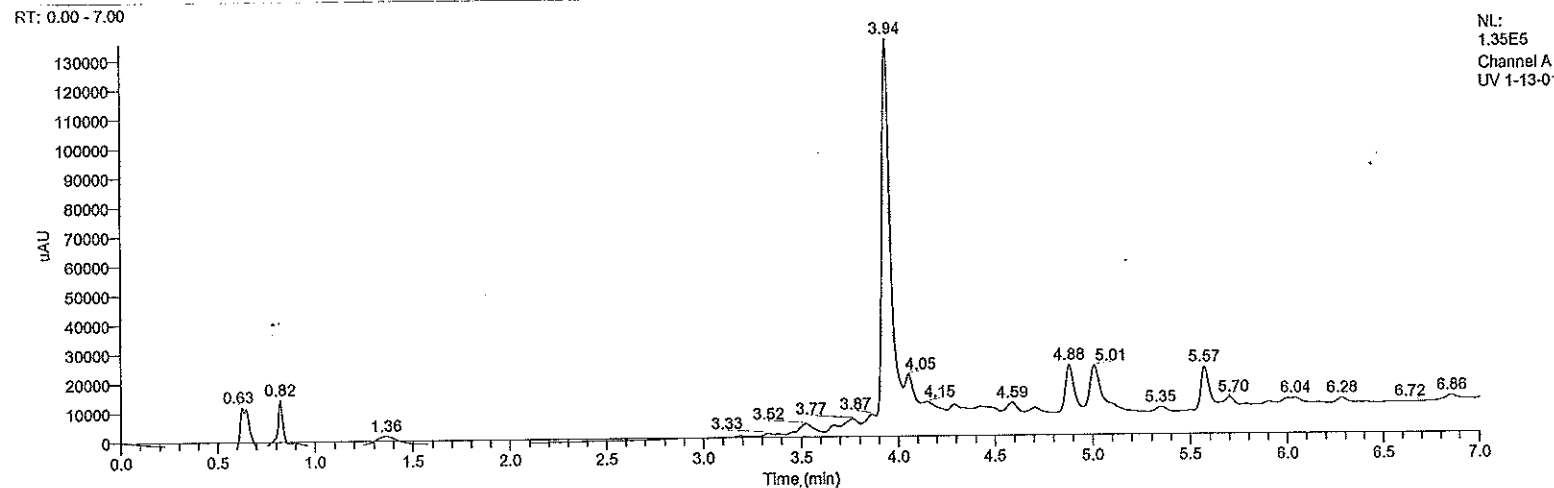
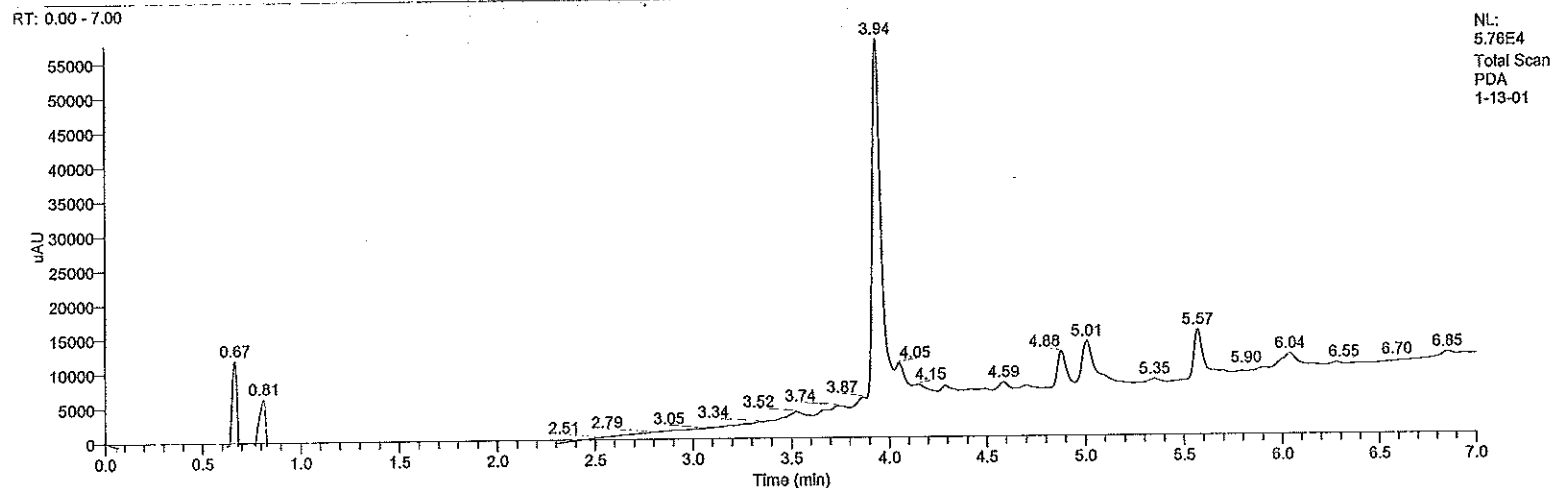
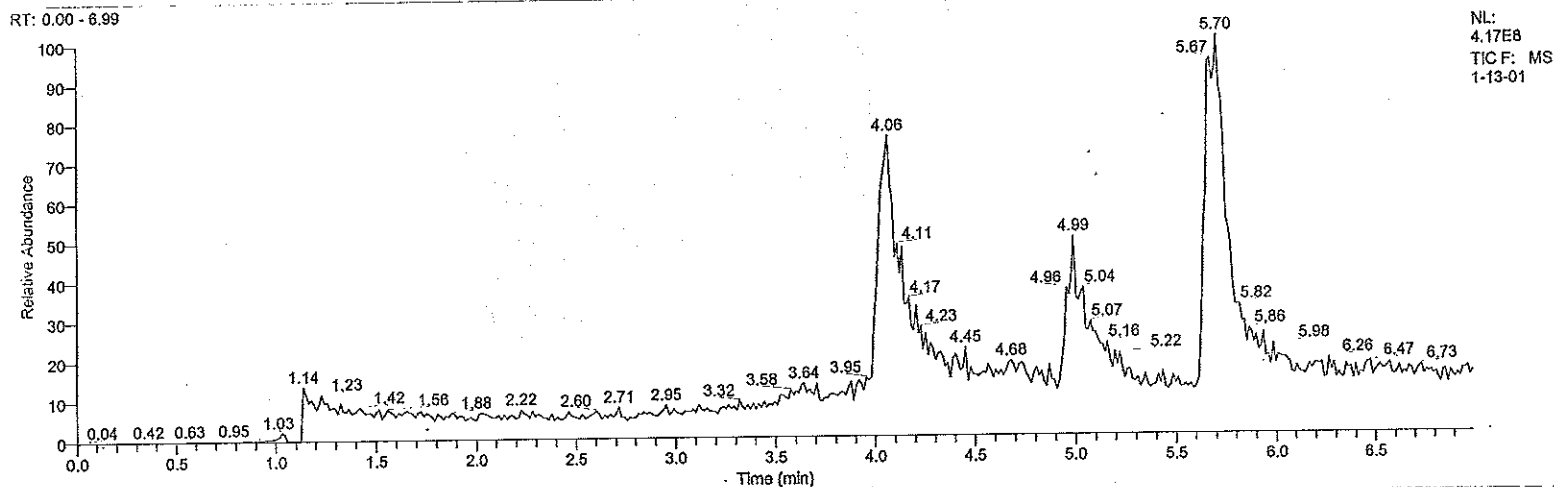
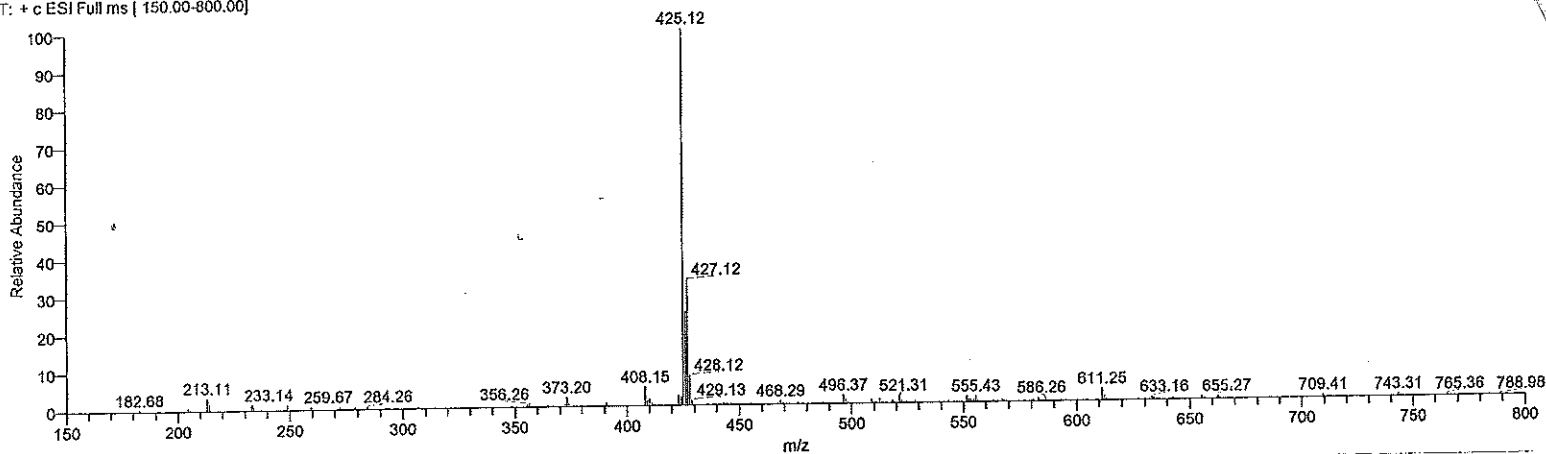
4819 #342-383 RT: 4.37-4.82 AV: 42 NL: 2.61E8
T: + c ESI Full ms [150.00-800.00]



2-4-02 #299-321 RT: 4.09-4.33 AV: 23 NL: 5.16E8
T: + c ESI Full ms [150.00-800.00]

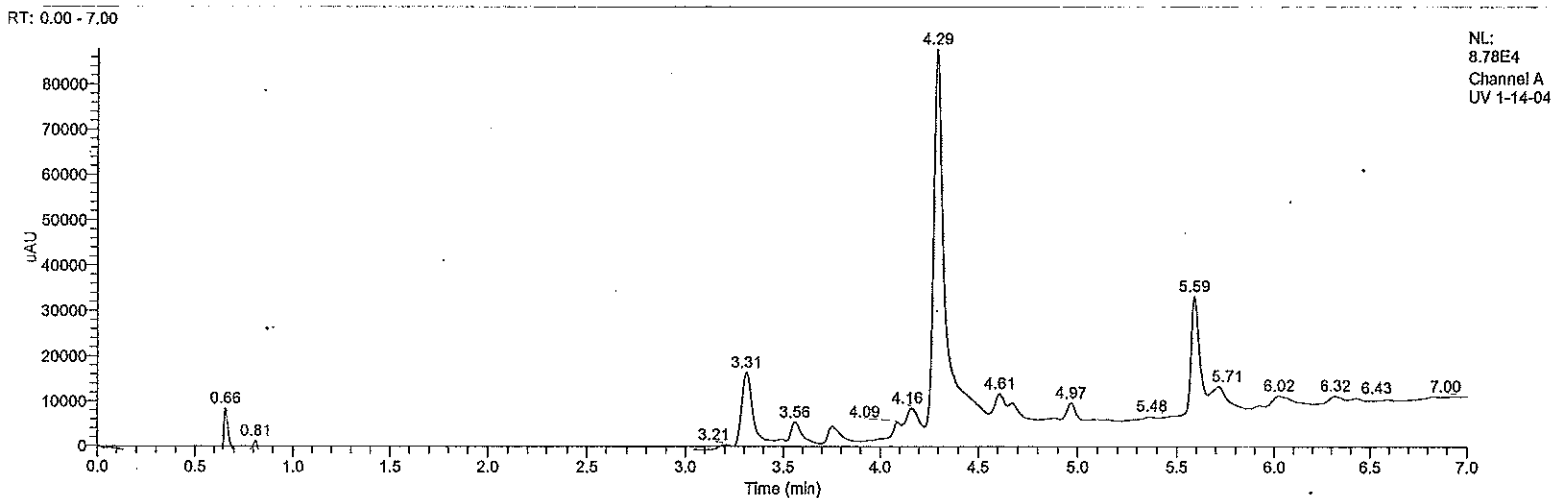
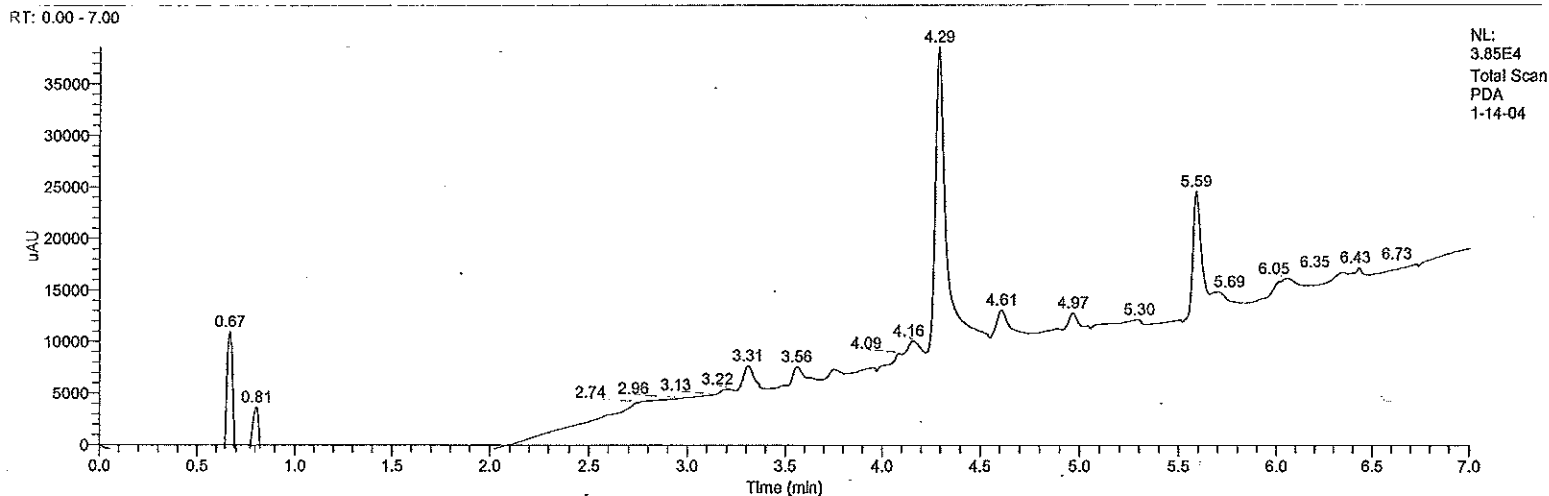
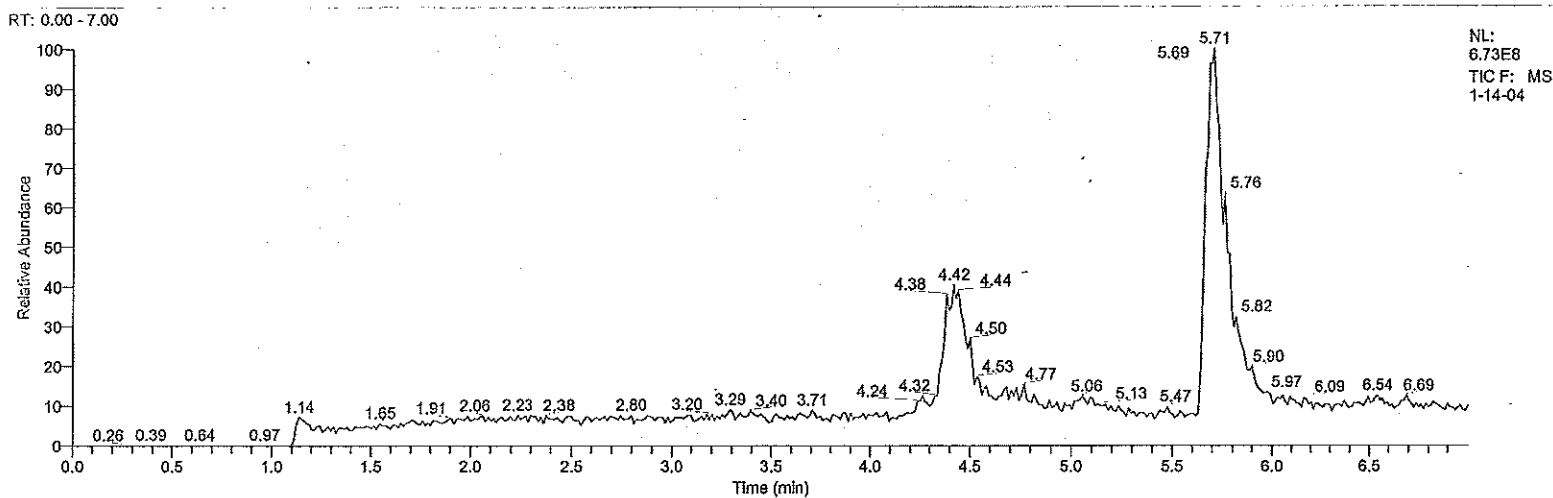
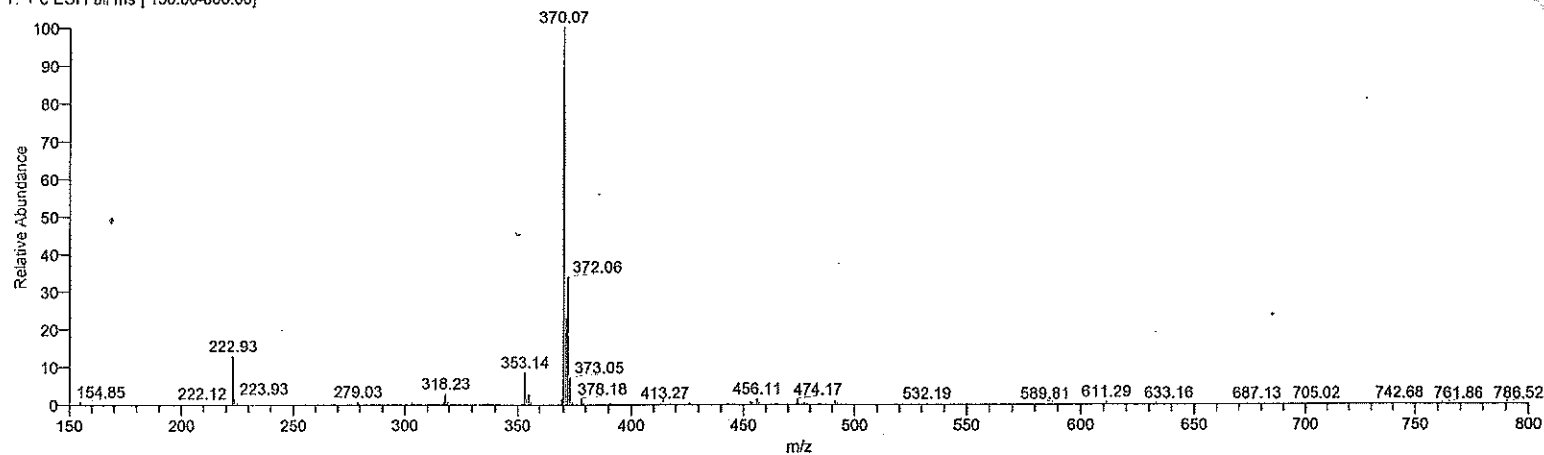


1-13-01 #296-314 RT: 3.98-4.19 AV: 19 NL: 6.50E7
T: + c ESI Full ms (150.00-800.00)



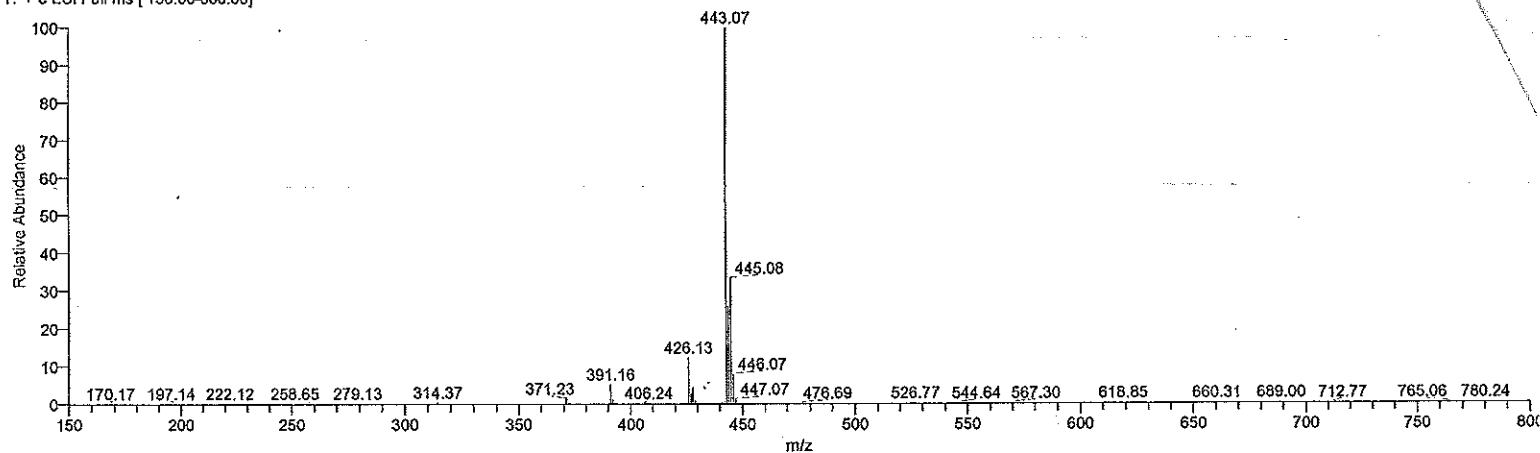
Compound 45

I-14-04 #334-345 RT: 4.36-4.49 AV: 12 NL: 8.78E7
T: + c ESI Full ms [150.00-800.00]

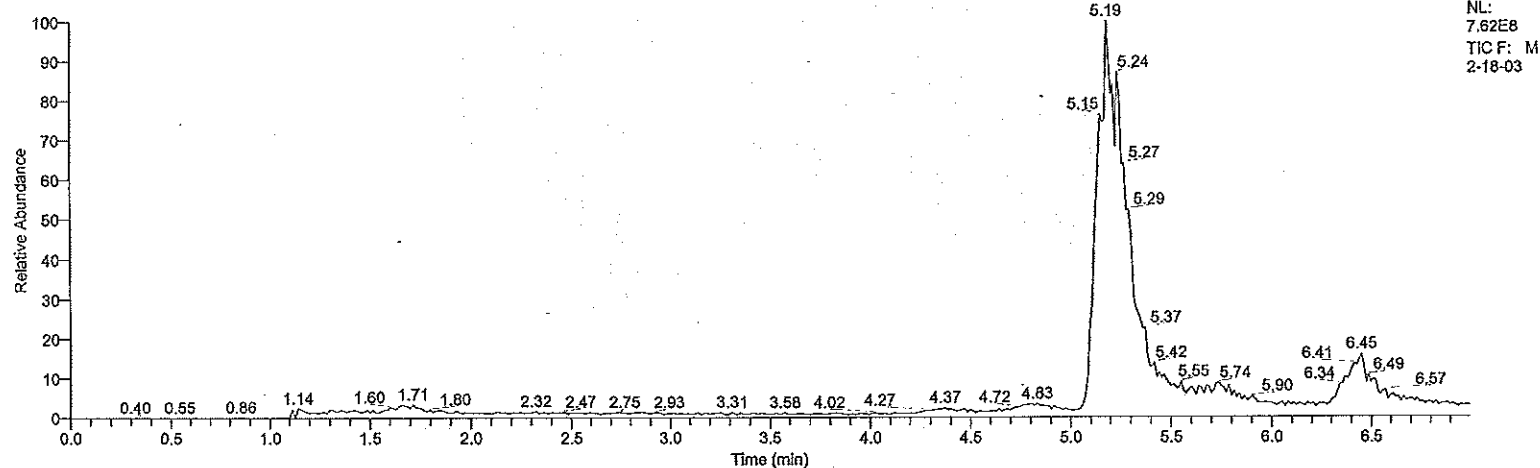


Compound 4b

2-18-03 #371-394 RT: 5.11-5.36 AV: 24 NL: 2.19E8
T: + c ESI Full ms [150.00-800.00]

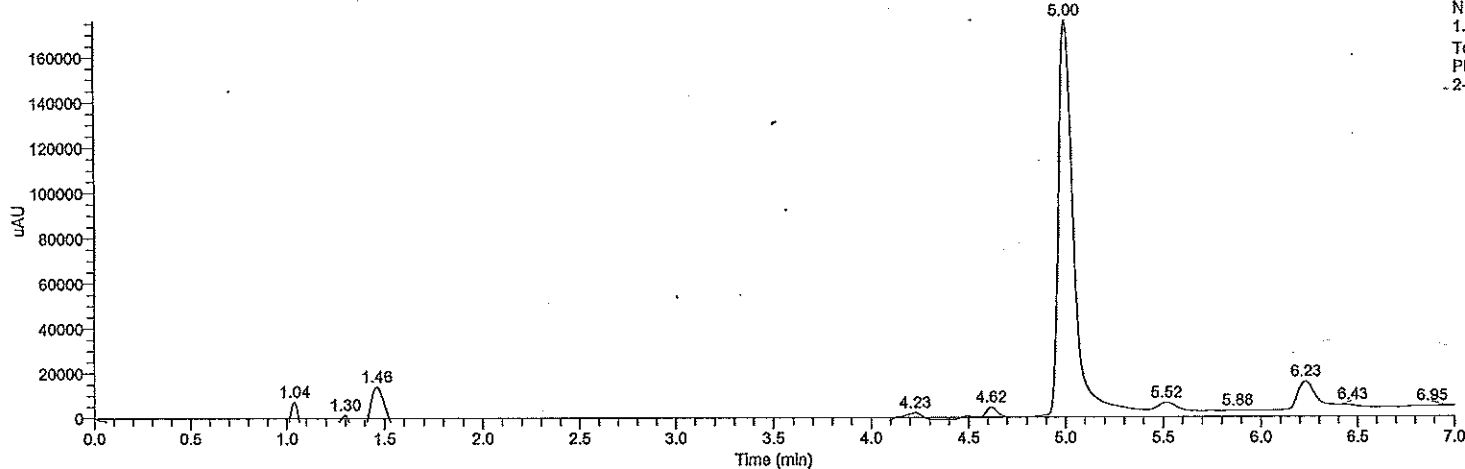


RT: 0.00 - 6.99



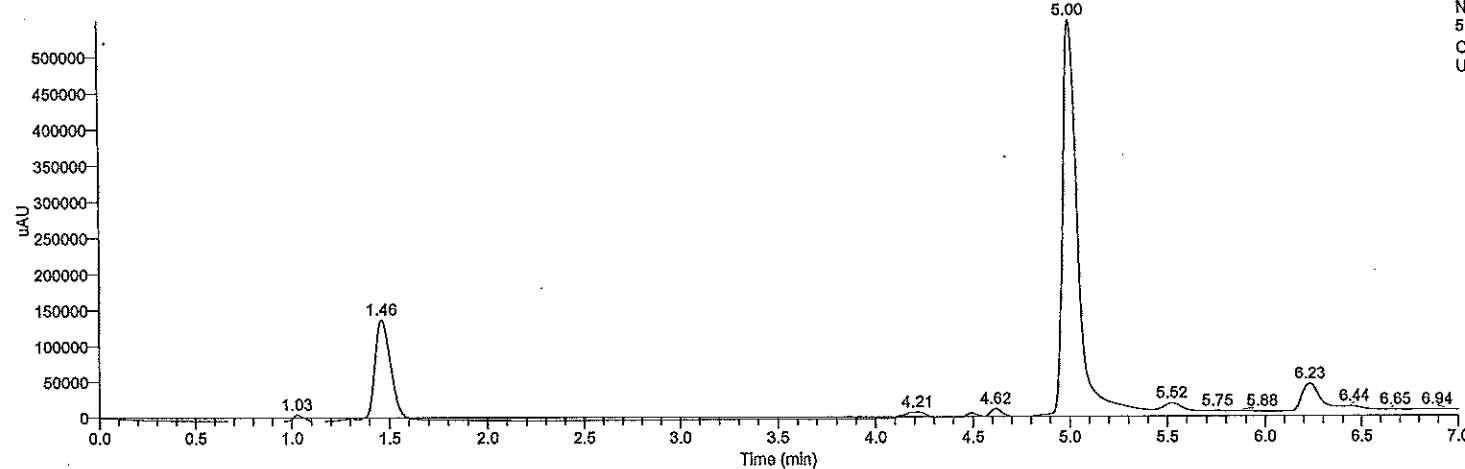
NL:
7.62E8
TIC F: M
2-18-03

RT: 0.00 - 7.00



NL:
1.76E5
Total Scan
PDA
2-18-03

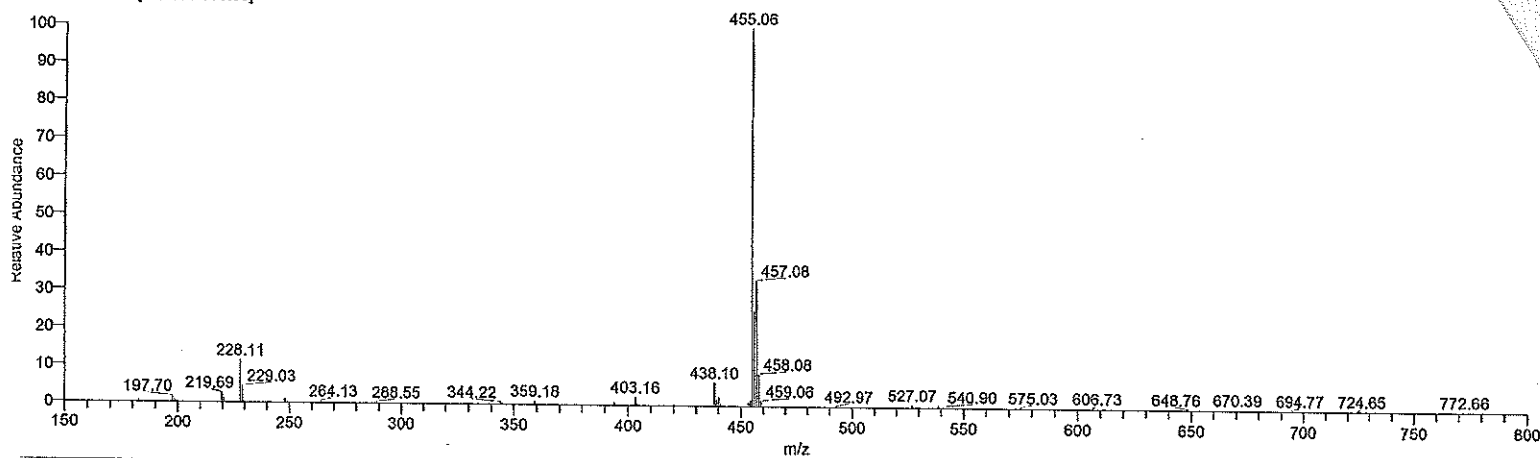
RT: 0.00 - 7.00



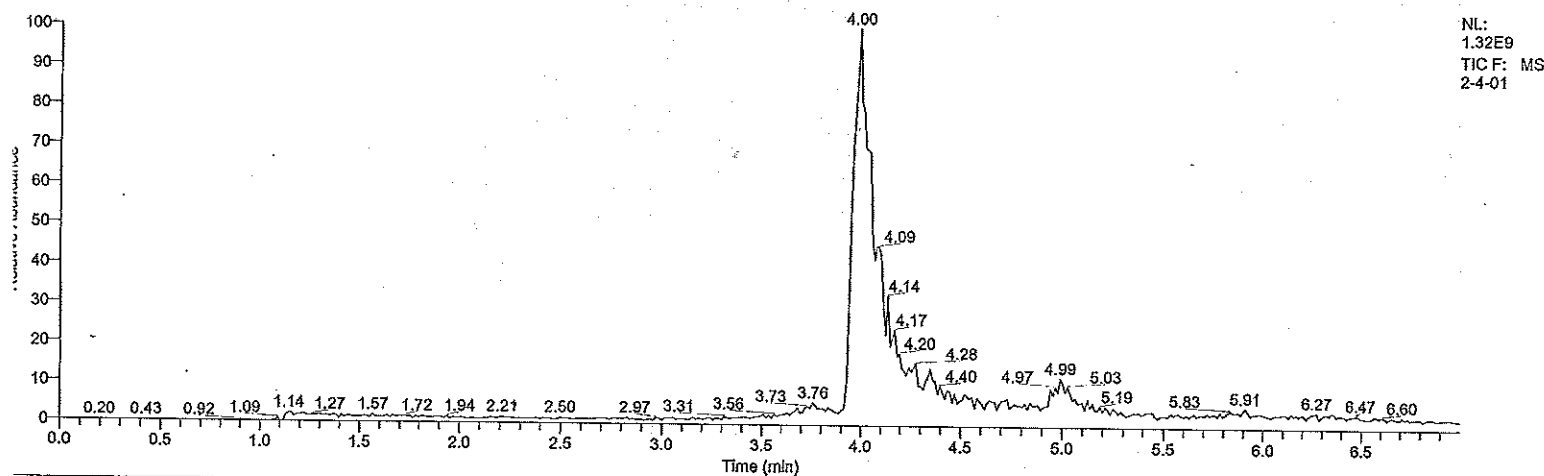
NL:
5.50E5
Channel /
UV 2-18-C

Compound 47

4-01 #287-307 RT: 3.93-4.15 AV: 21 NL: 3.09E8
+ c ESI Full ms [150.00-800.00]

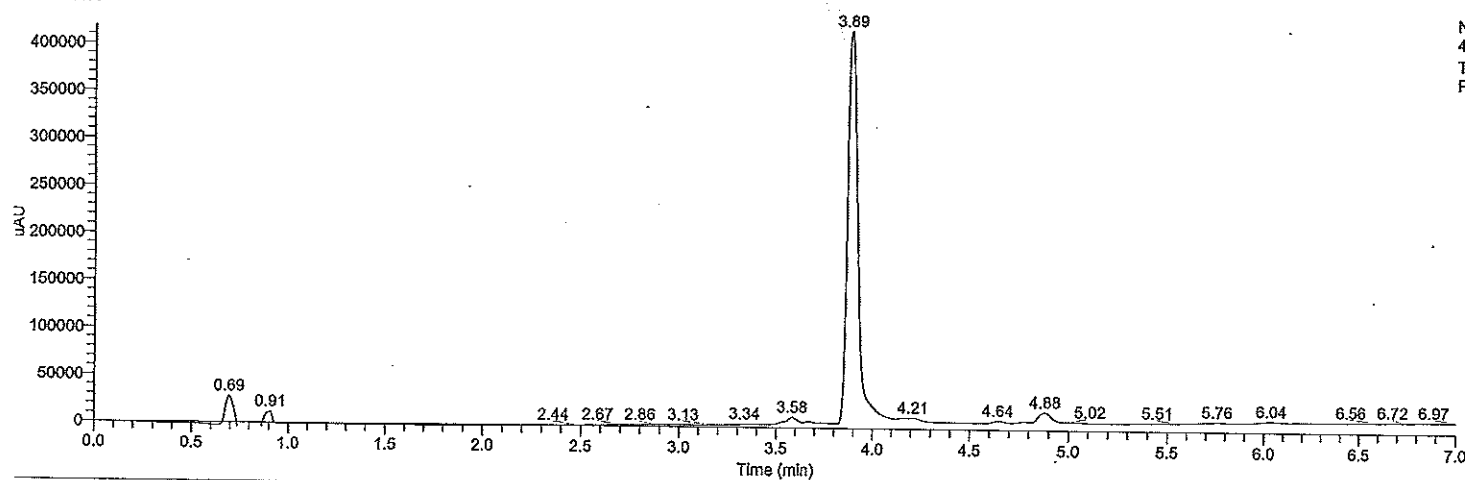


T: 0.00 - 7.00



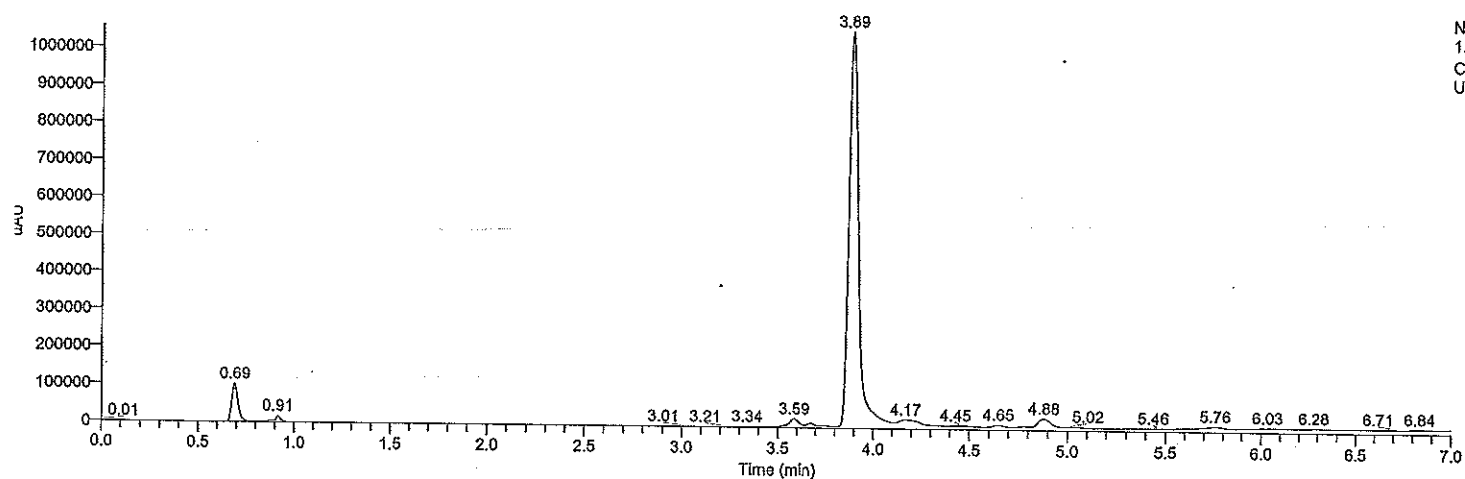
NL:
1.32E9
TIC F: MS
2-4-01

: 0.00 - 7.00



NL:
4.18E5
Total Scan
PDA 2-4-01

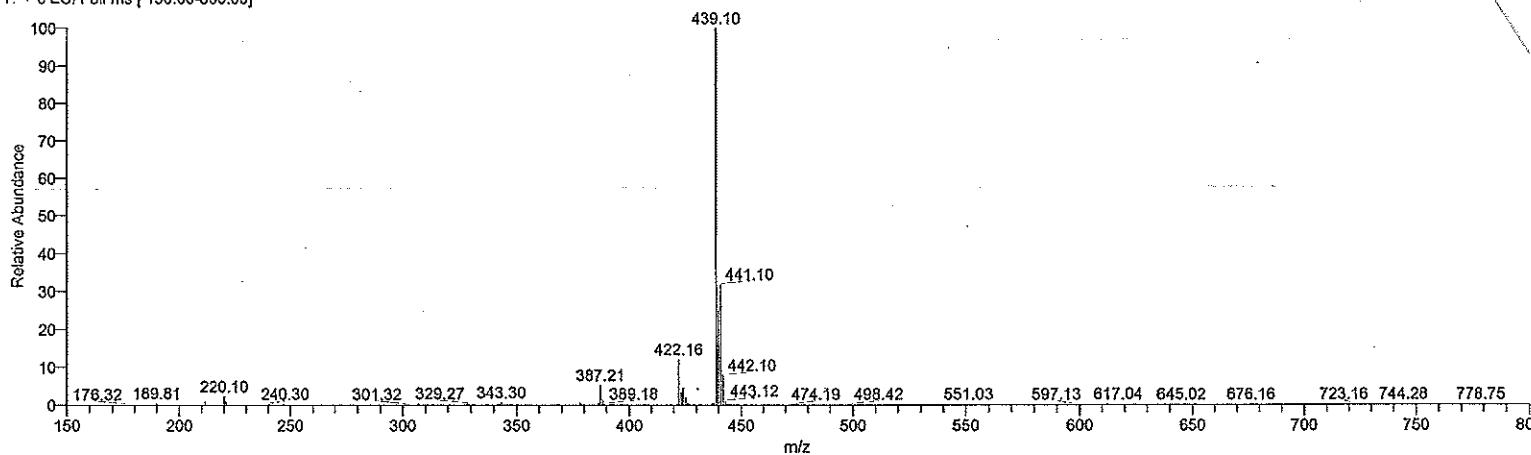
0.00 - 7.00



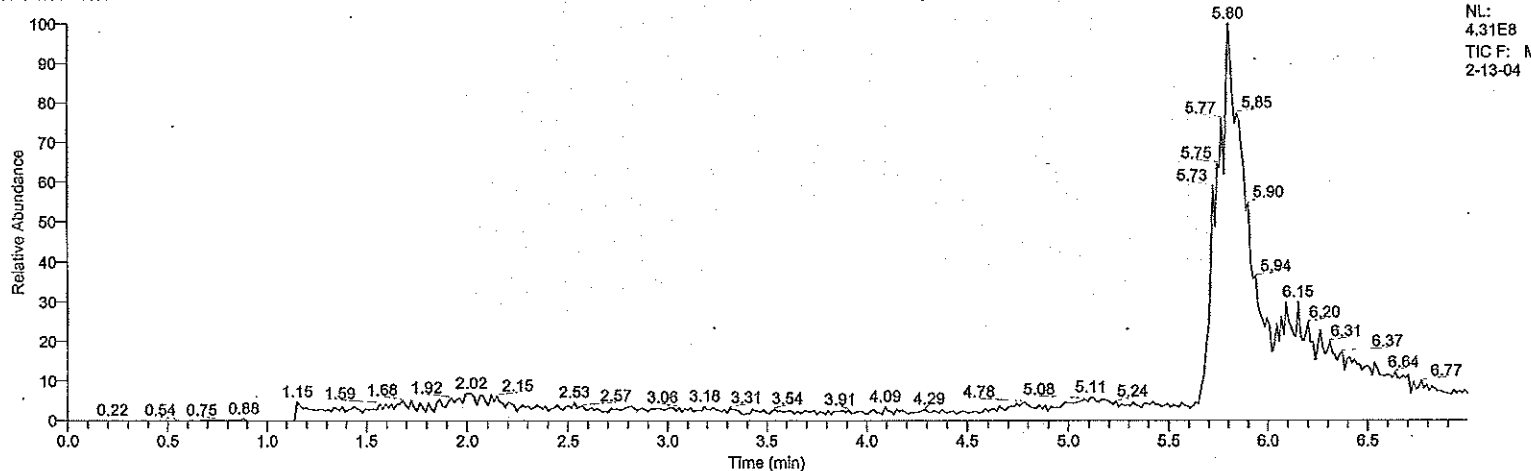
NL:
1.06E6
Channel A
UV 2-4-01

Compound 48

2-13-04 #411-431 RT: 5.70-5.93 AV: 21 NL: 1.25E8
 T: + c ESI Full ms [150.00-800.00]

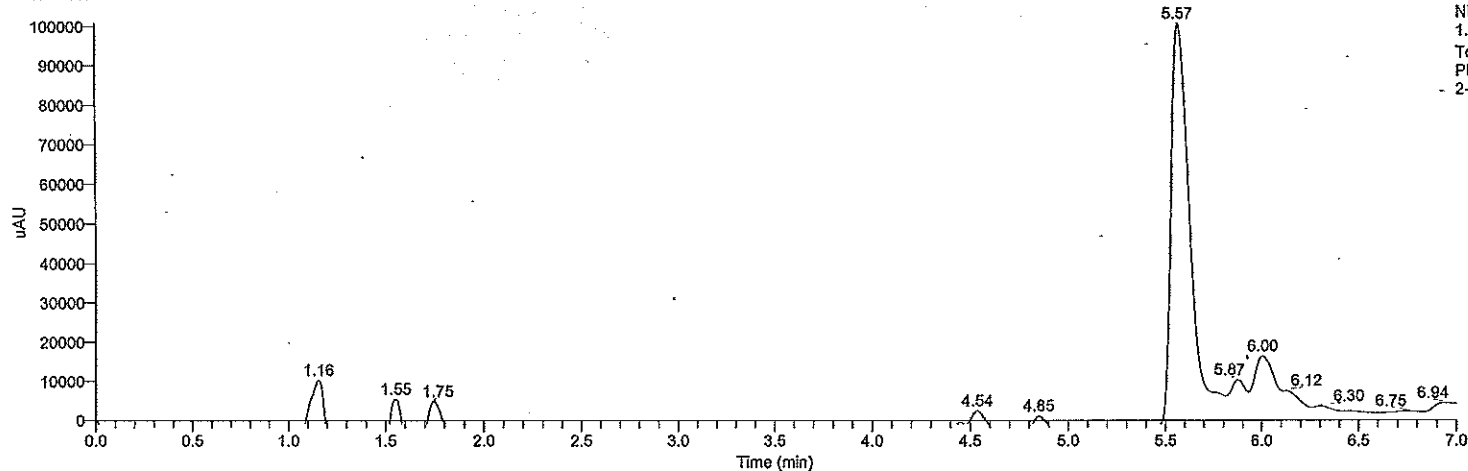


RT: 0.00 - 7.00



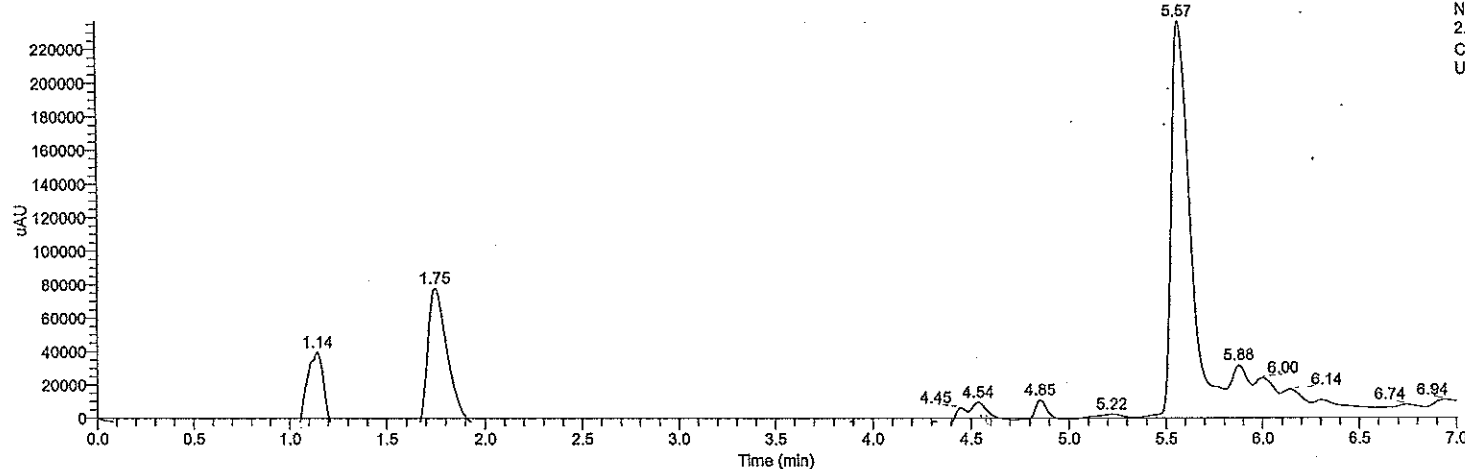
NL: 4.31E8
 TIC F: A
 2-13-04

RT: 0.00 - 7.00



NL: 1.01E5
 Total Scs
 PDA
 2-13-04

RT: 0.00 - 7.00

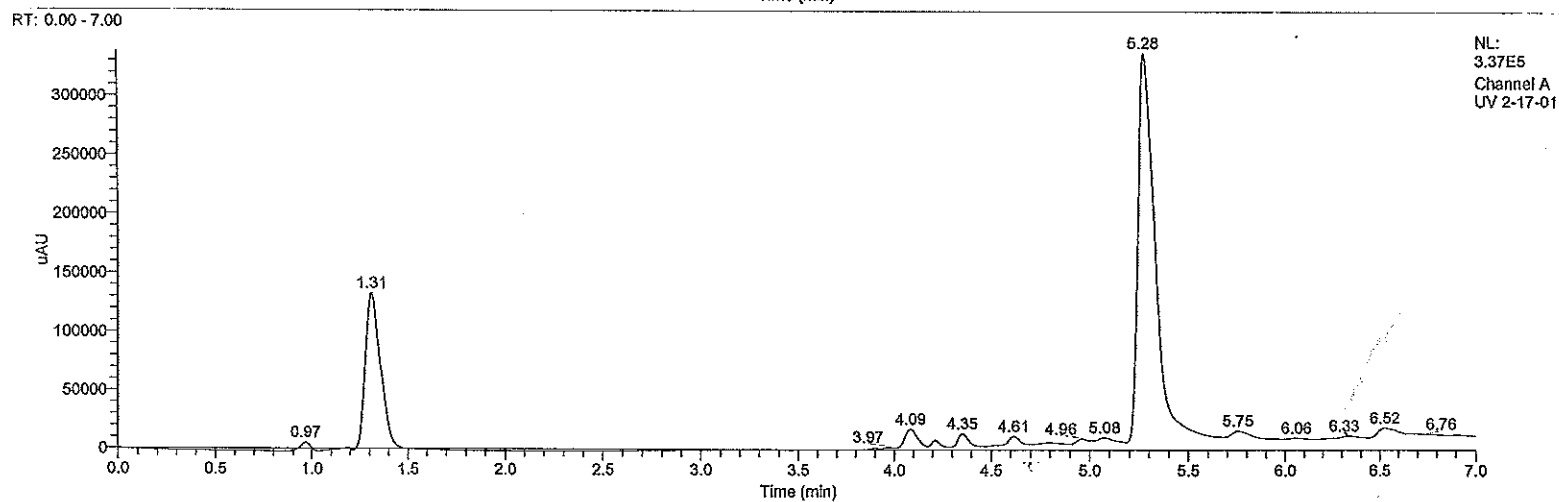
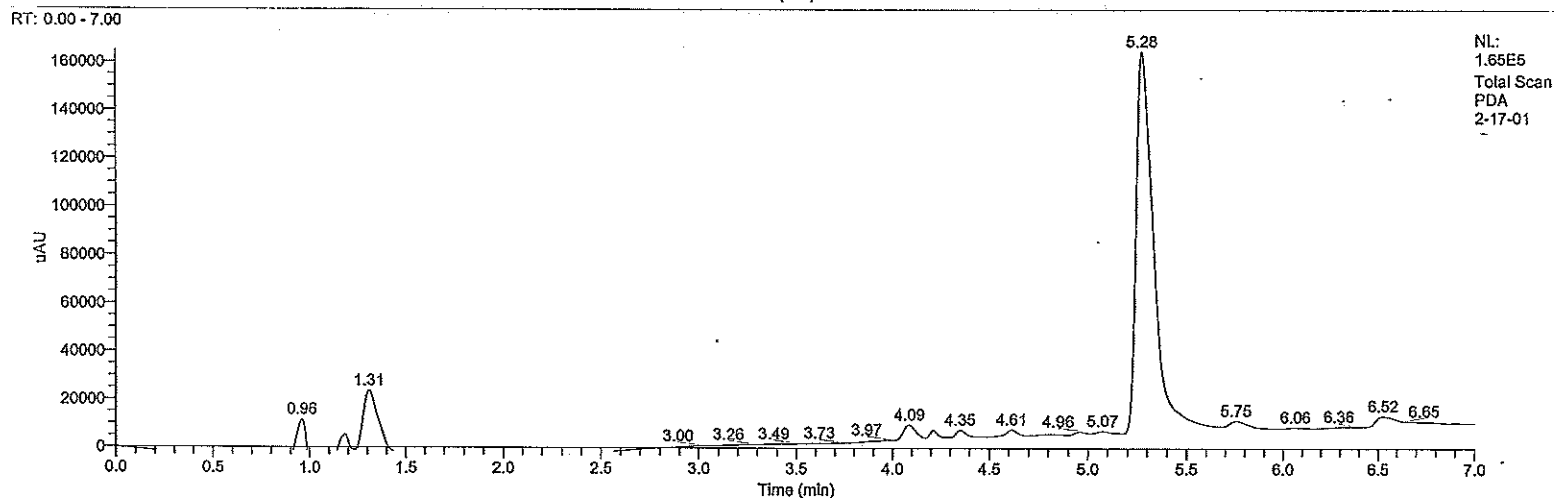
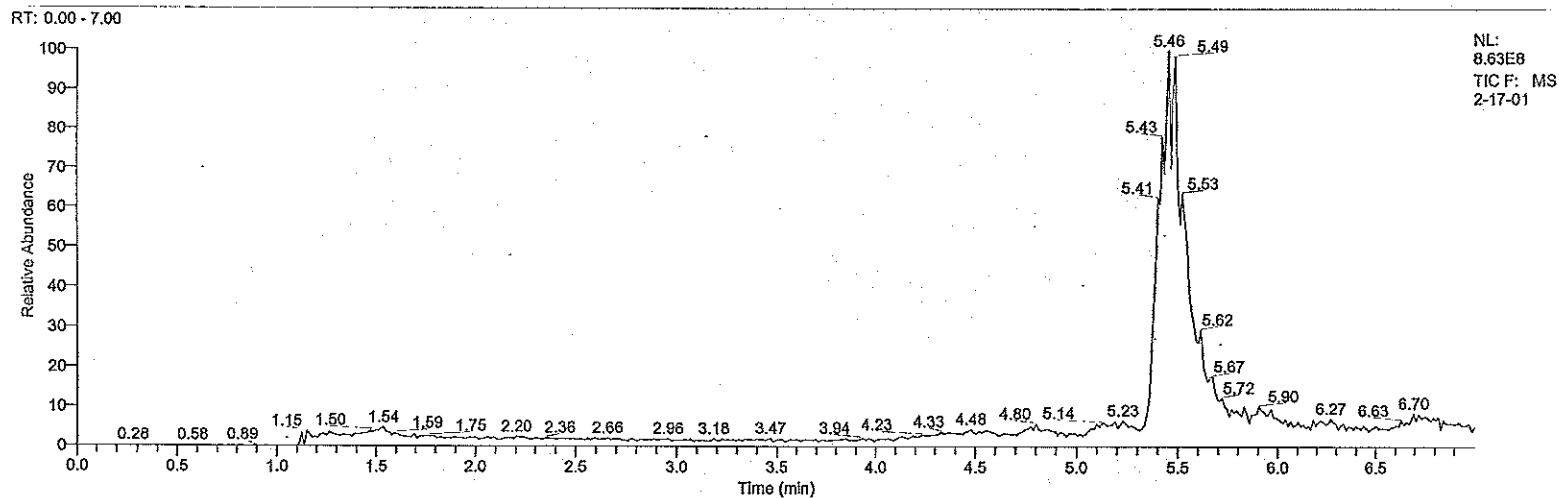
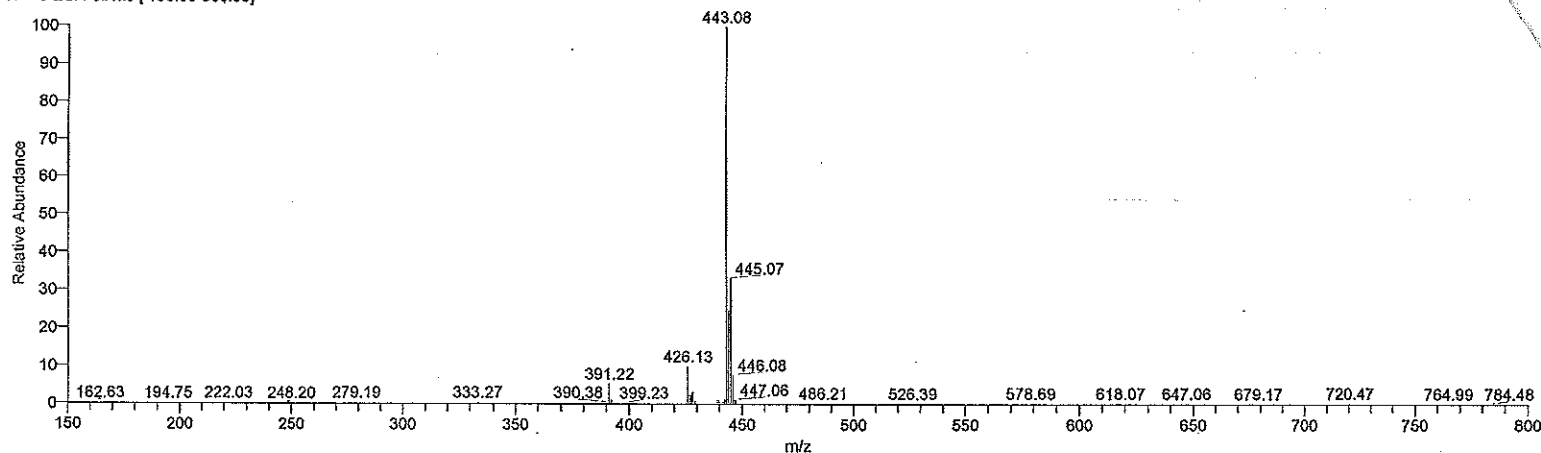


NL: 2.37E5
 Channel:
 UV 2-13-

2/17/2009 8:58:31 AM

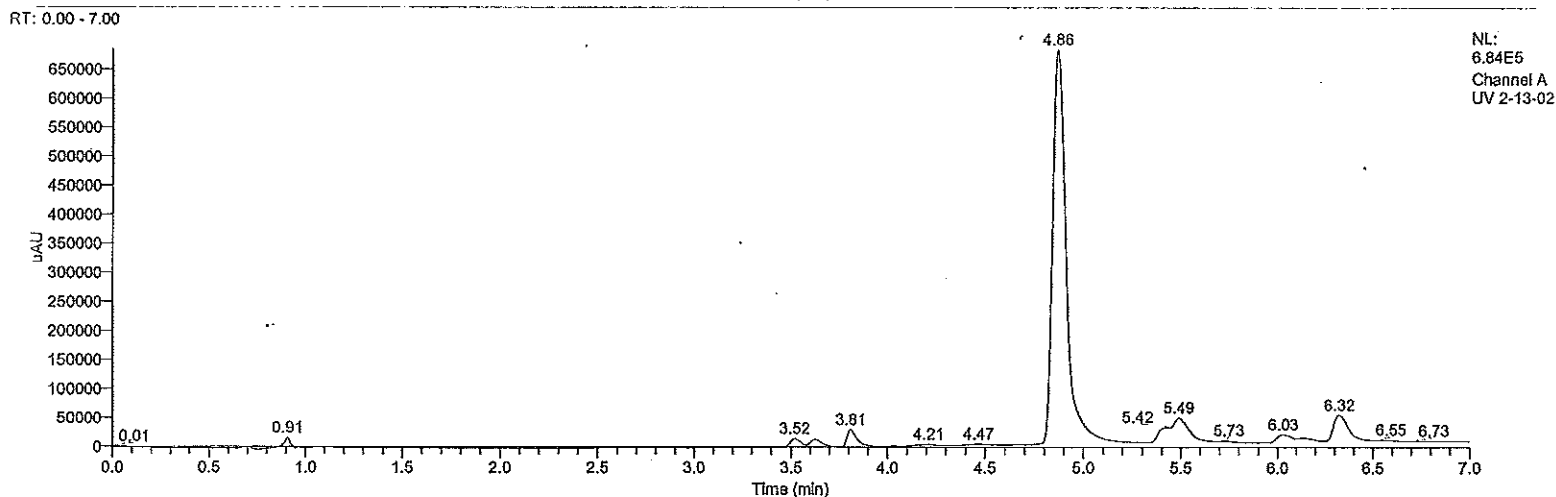
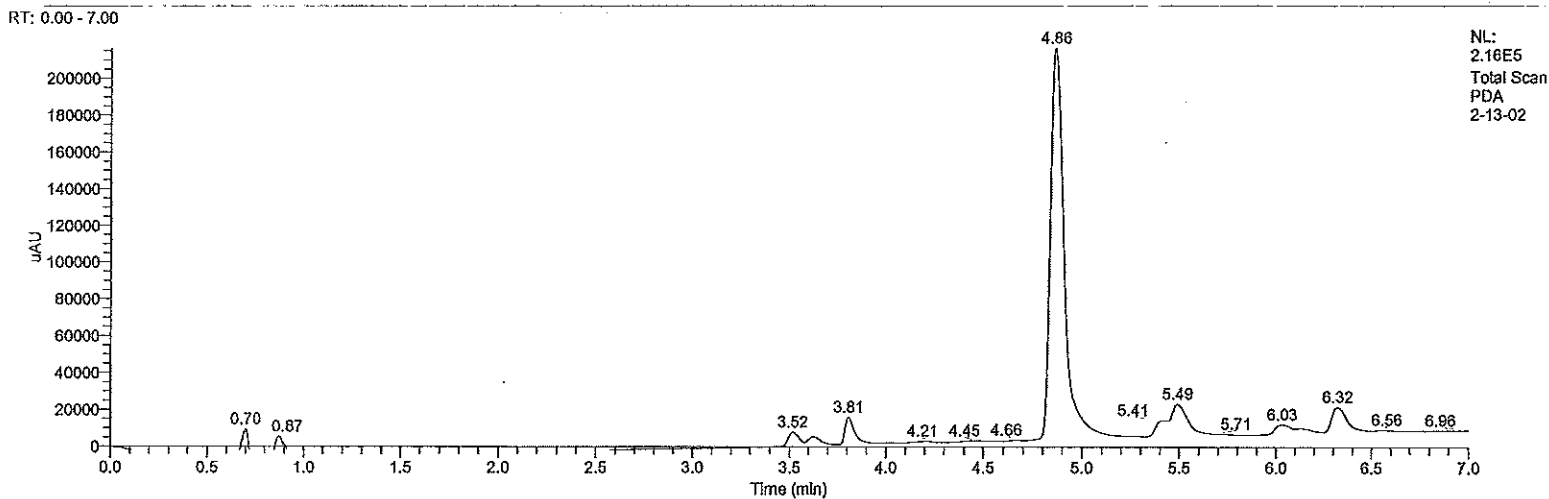
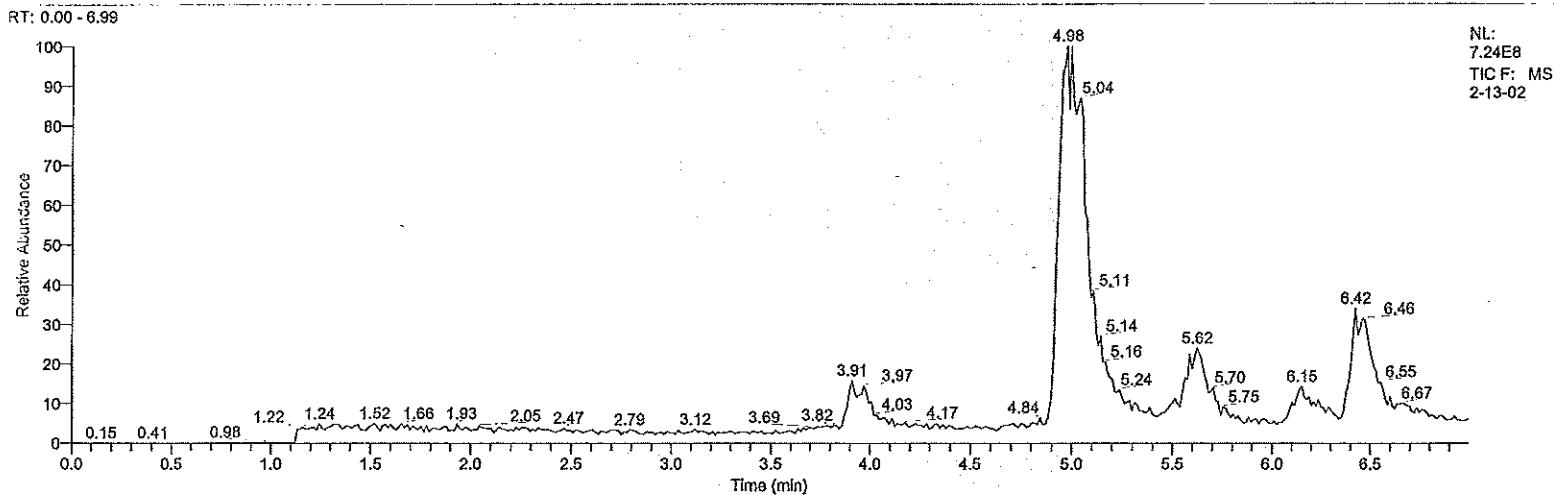
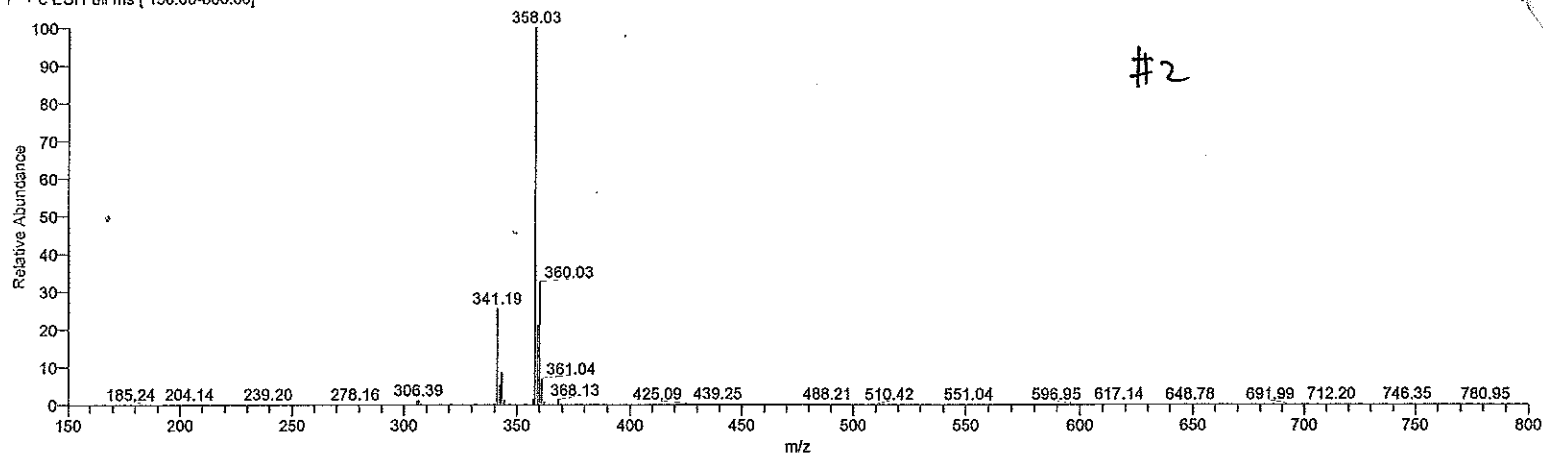
Compound 49

2-17-01 #391-416 RT: 5.36-5.84 AV: 26 NL: 2.18E8
T: + c ESI Full ms [150.00-800.00]

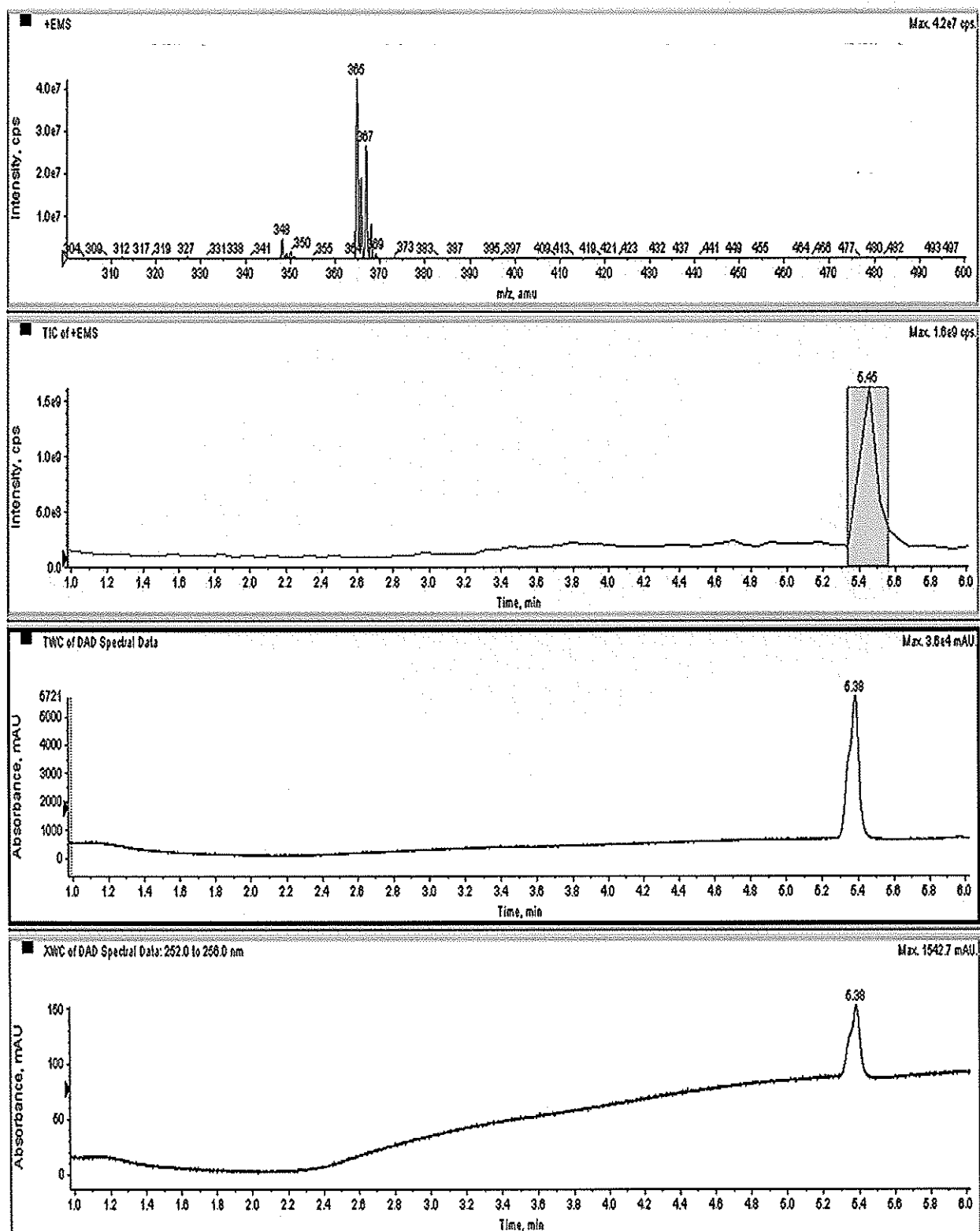


Compound 50

2-13-02 #360-386 RT: 4.90-5.19 AV: 27 NL: 1.79E8
T + c ESI Full ms (150.00-800.00)



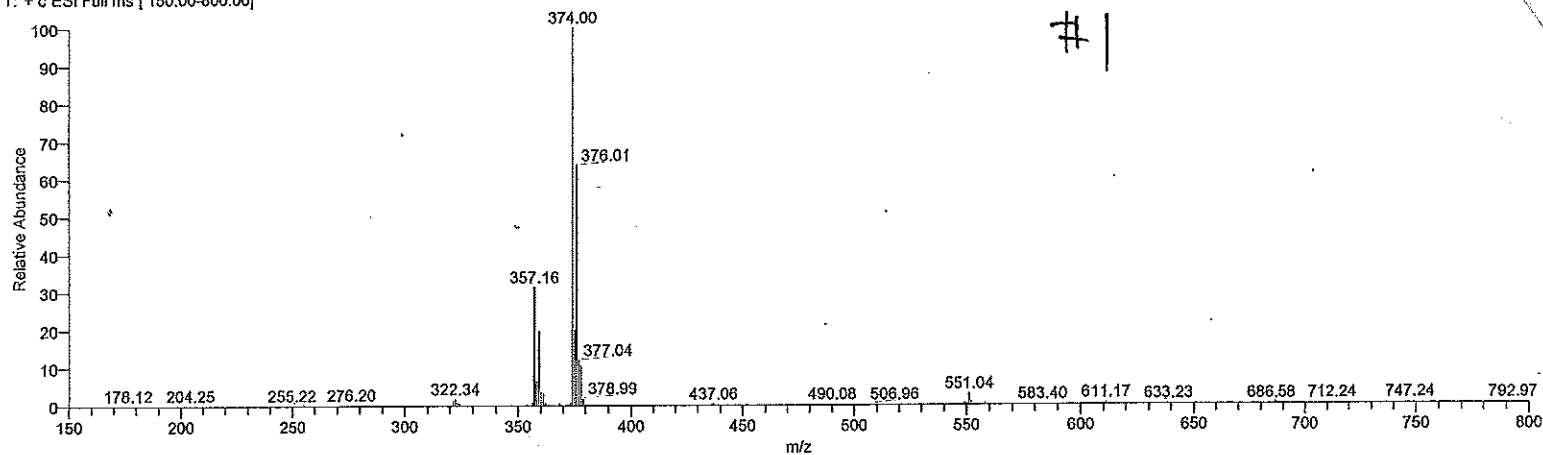
Compound 51 MW = 365.8



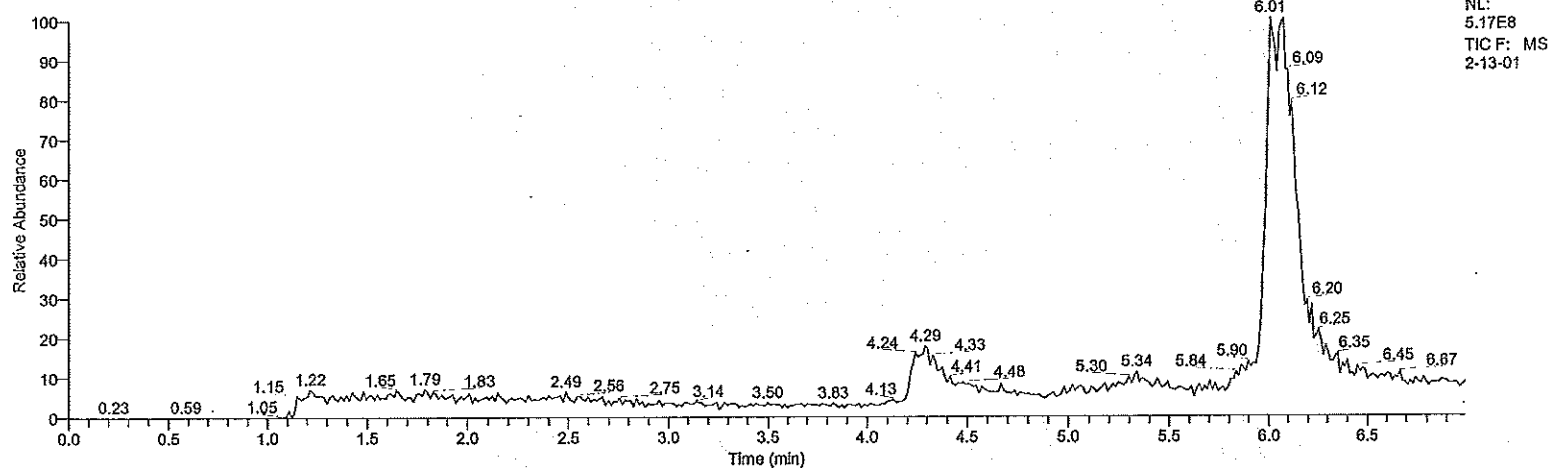
Compound 52

#1

2-13-01 #438-461 RT: 5.95-6.21 AV: 24 NL: 1.06E8
T: + c ESI Full ms [150.00-800.00]

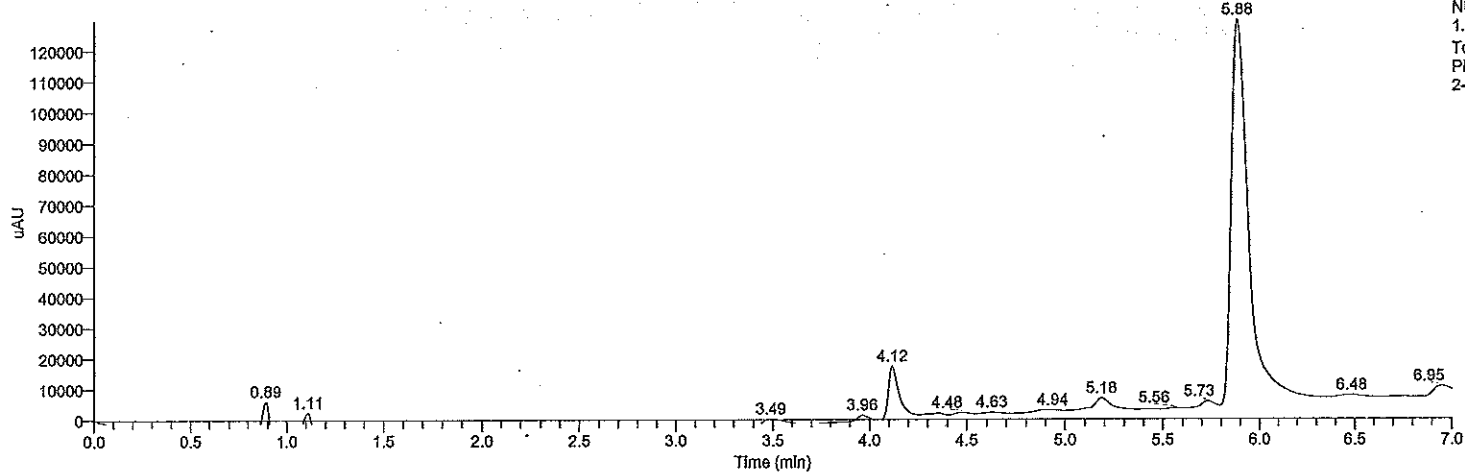


RT: 0.00 - 6.99



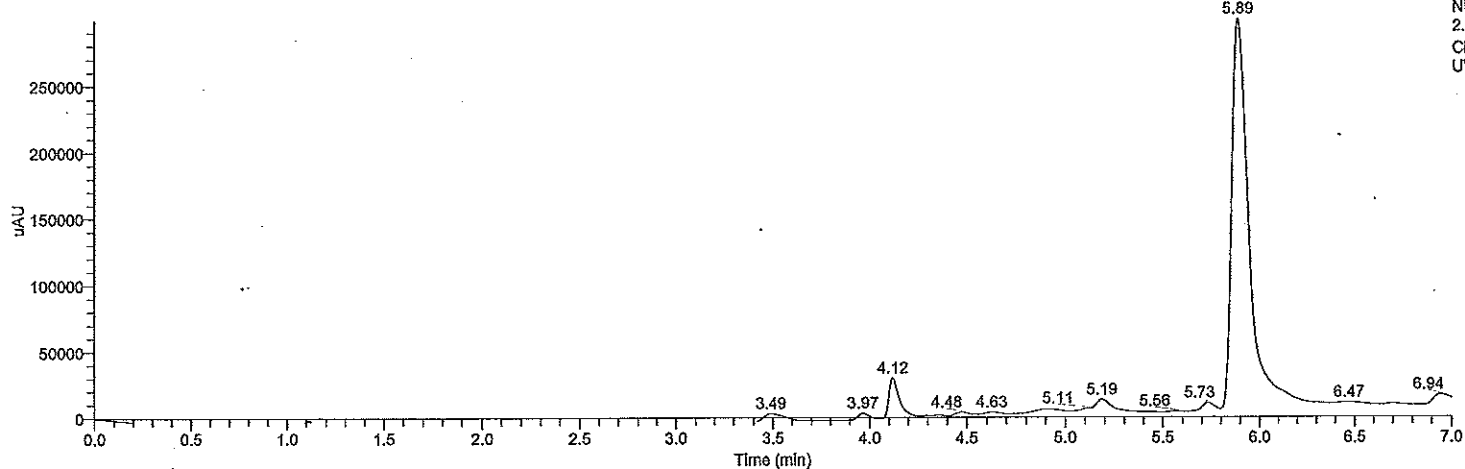
NL:
5.17E8
TIC F: MS
2-13-01

RT: 0.00 - 7.00



NL:
1.29E5
Total Scan
PDA
2-13-01

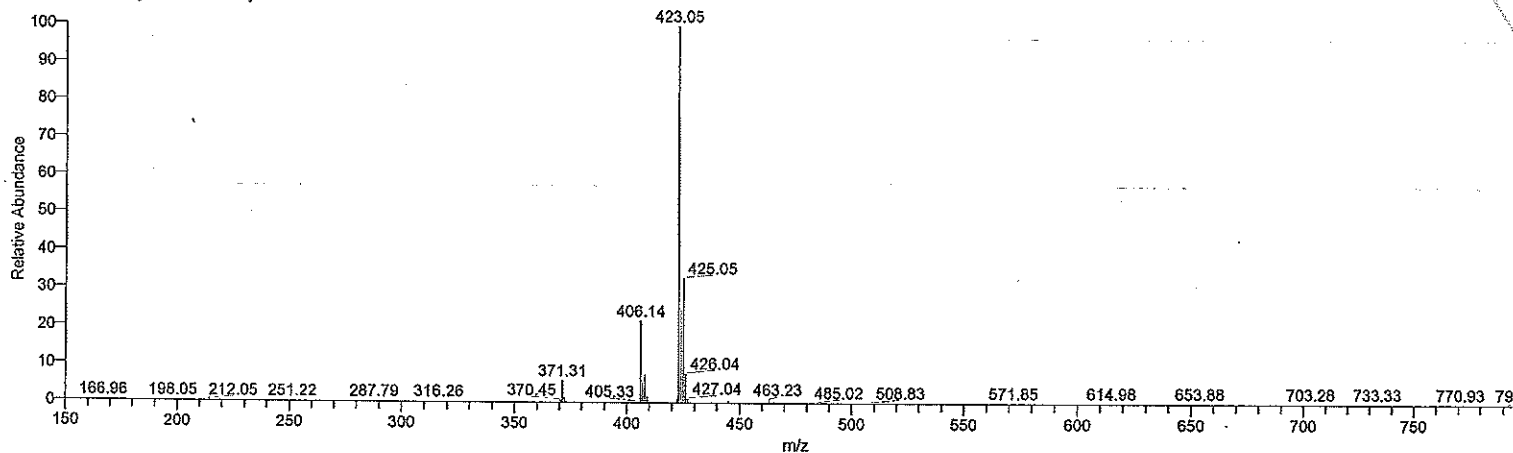
RT: 0.00 - 7.00



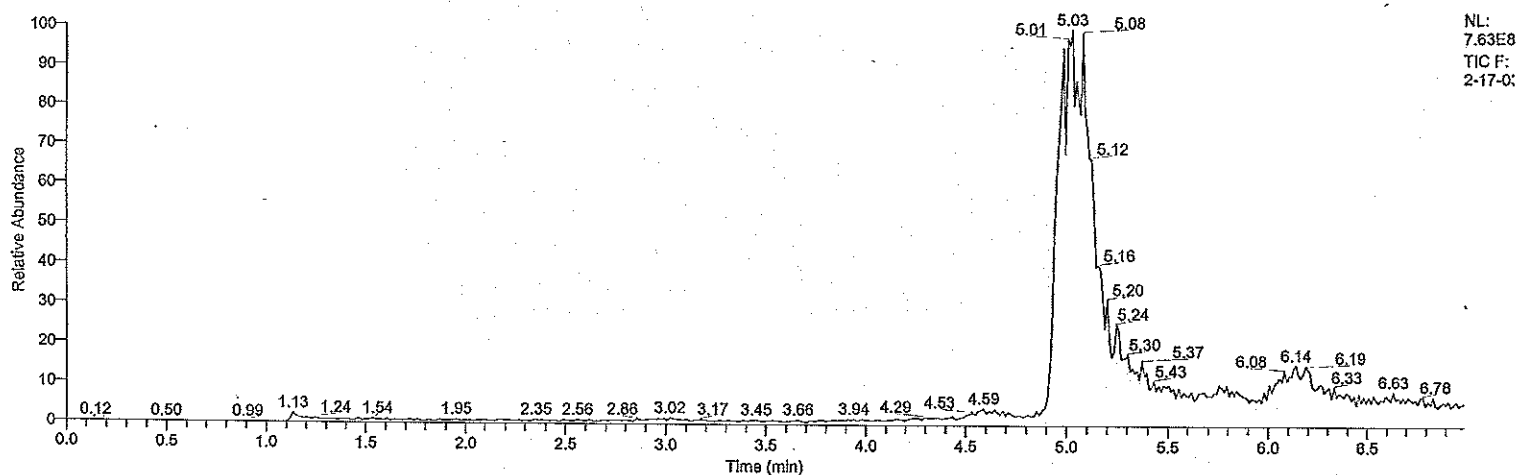
NL:
2.99E5
Channel A
UV 2-13-01

Compound 53

2-17-03 #360-386 RT: 4.92-5.20 AV: 27 NL: 2.27E8
T: + c ESI Full ms [150.00-800.00]

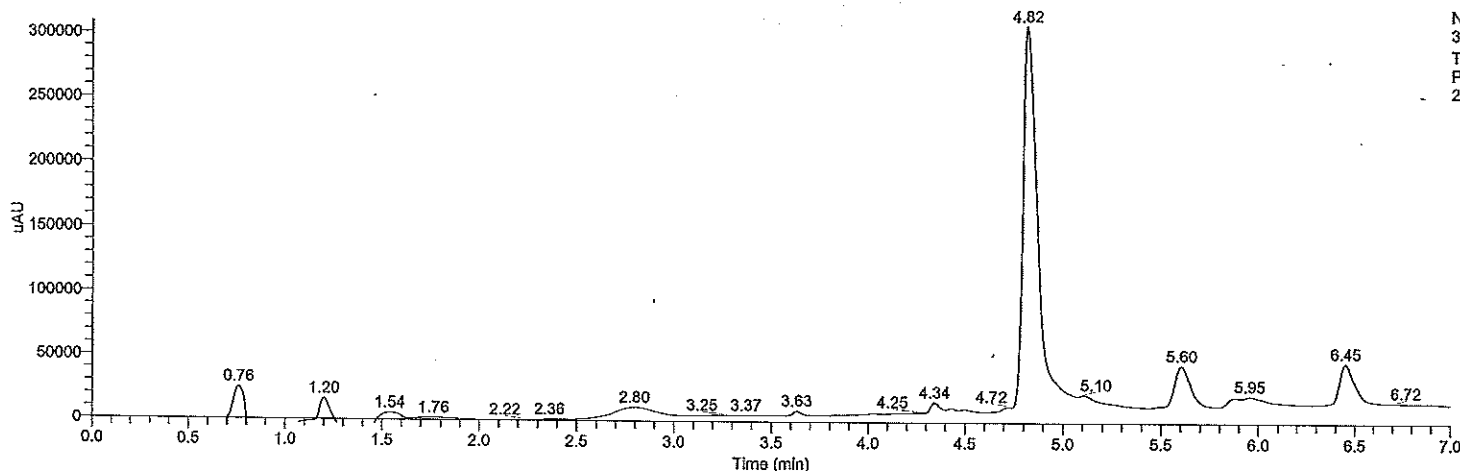


RT: 0.00 - 6.99



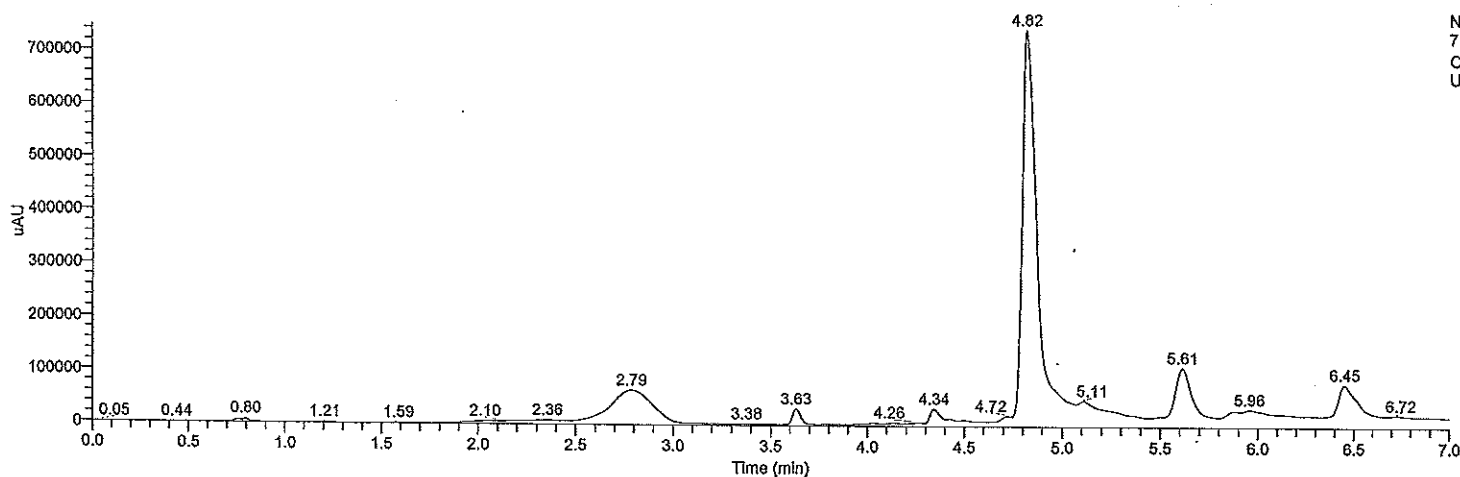
NL:
7.63E8
TIC F:
2-17-0:

RT: 0.00 - 7.00



NL:
3.09E5
Total S
PDA
2-17-0:

RT: 0.00 - 7.00



NL:
7.47E5
Chann:
UV 2-1