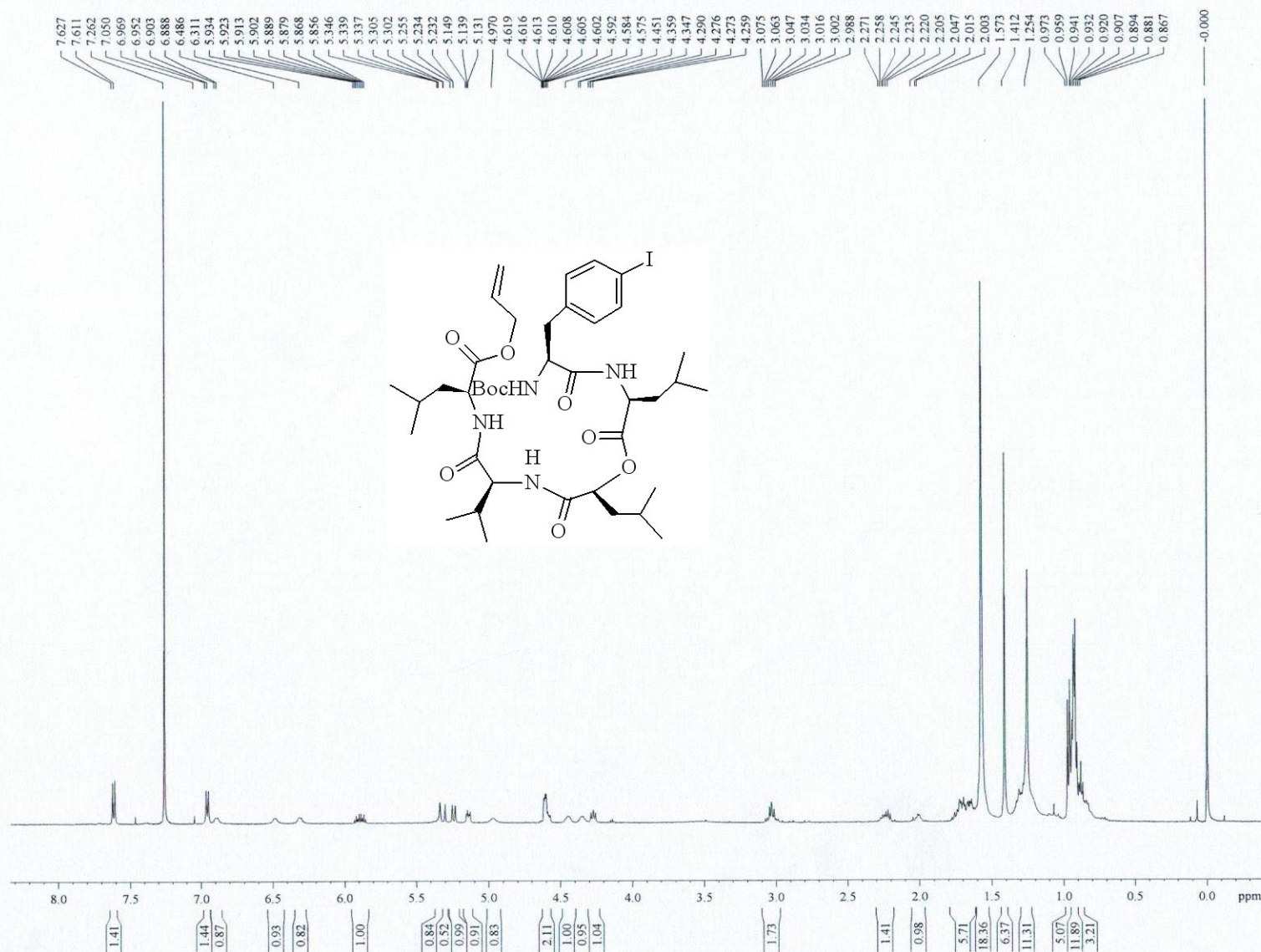


```
NAME                2012.10.15
EXPNO               1
PROCNO             1
Date_              20121015
Time_              10.33
INSTRUM            spect
PROBHD             5 mm PABBO BB-
PULPROG            zg30
TD                 32768
SOLVENT            CDC13
NS                  32
DS                  0
SWH                10000.000 Hz
FIDRES             0.305176 Hz
AQ                 1.6384500 sec
RG                 90.5
DW                 50.000    usec
DE                 6.50     usec
TE                 295.7 K
D1                 1.00000000 sec
TD0                1
```

```
===== CHANNEL f1 =====
```

NUC1		1H
P1	13.00	usec
PL1	2.00	dB
PL1W	16.79986763	W
SFO1	500.1335009	MHz
SI	32768	
SF	500.1300125	MHz
WDW		EM
SSB		0
LB	0.30	Hz
GB		0
PC	1.00	

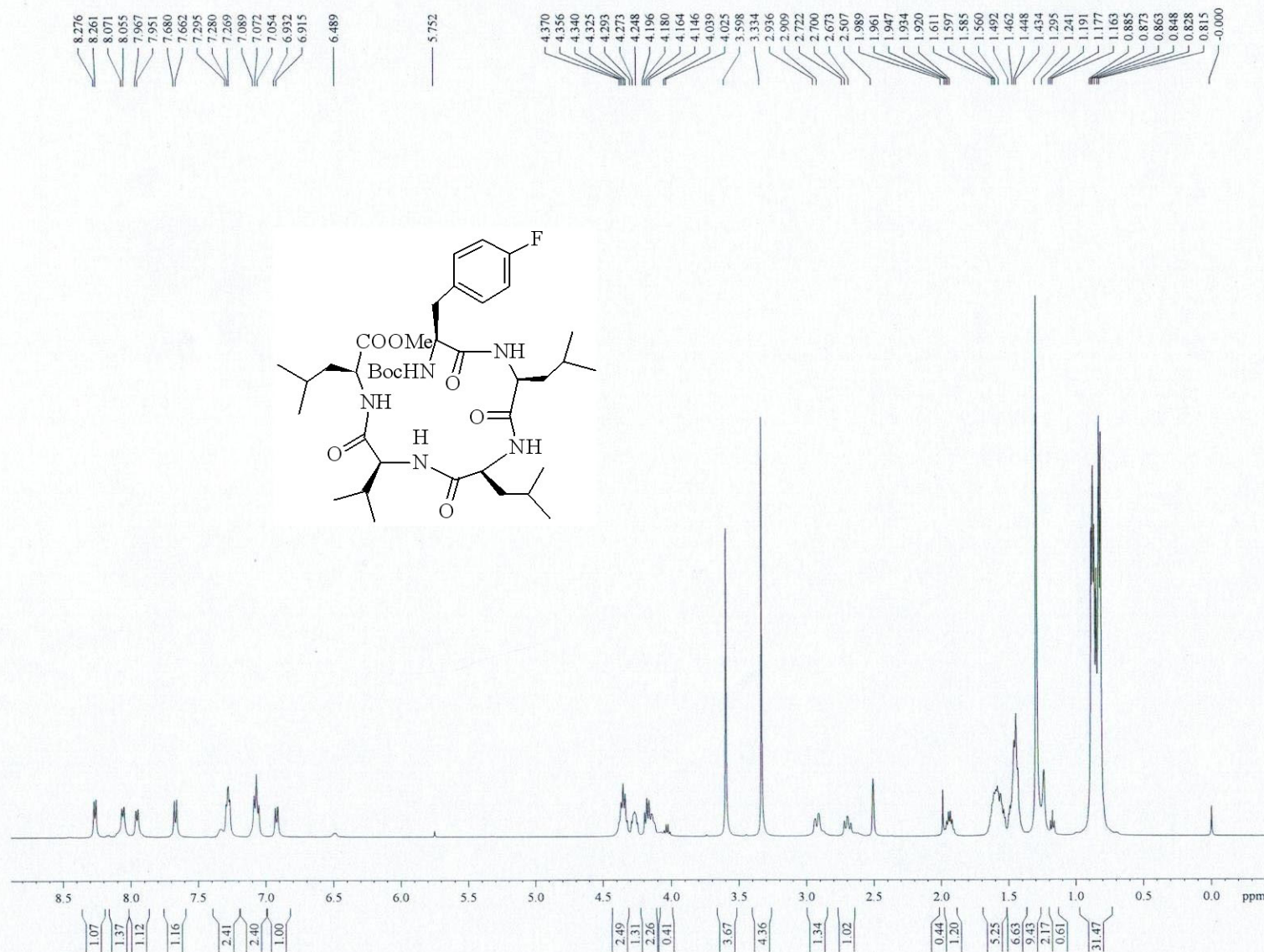


liushouxin--zhb-lianwutai

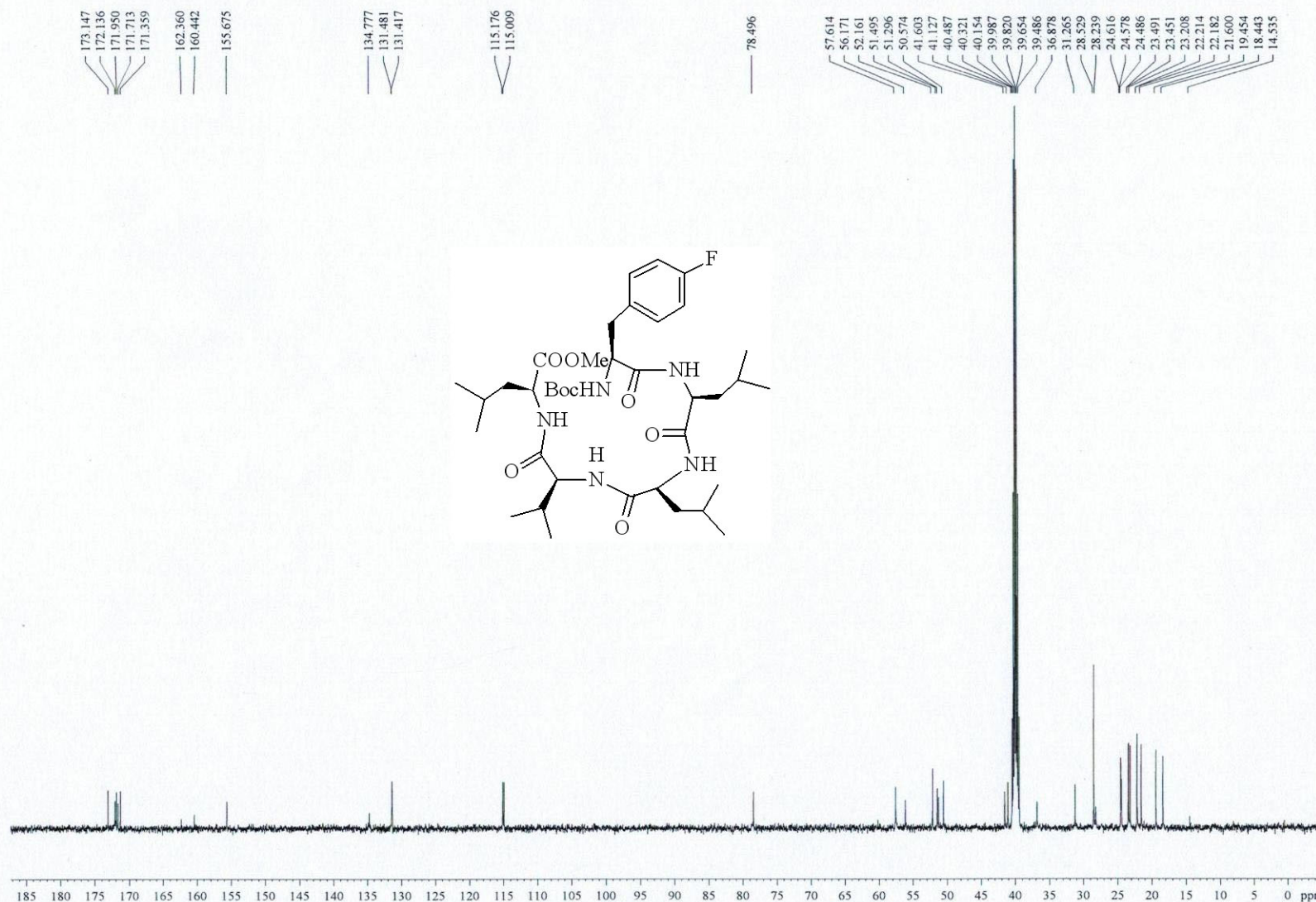


NAME 2013.03.23
EXPNO 12
PROCNO 1
Date_ 20130323
Time 15.29
INSTRUM spect
PROBHD 5 mm PABBO BB-
PULPROG zg30
TD 32768
SOLVENT DMSO
NS 8
DS 0
SWH 7500.000 Hz
FIDRES 0.228882 Hz
AQ 2.1845834 sec
RG 80.6
DW 66.667 usec
DE 6.50 usec
TE 298.0 K
D1 1.00000000 sec
TD0 1

===== CHANNEL f1 =====
NUC1 1H
P1 13.00 usec
PL1 2.00 dB
PL1W 16.79986763 W
SFO1 500.1330885 MHz
SI 32768
SF 500.1300019 MHz
WDW EM
SSB 0
LB 0.30 Hz
GB 0
PC 1.00



liushouxin-zhb-lianwutai



NAME 2013.03.23
EXPNO 13
PROCNO 1
Date 20130323
Time 15.35
INSTRUM spect
PROBHD 5 mm PABBO BB-
PULPROG zgpg30
TD 16384
SOLVENT DMSO
NS 184
DS 0
SWH 29761.904 Hz
FIDRES 1.816522 Hz
AQ 0.2753012 sec
RG 2050
DW 16.800 usec
DE 6.50 usec
TE 298.2 K
D1 2.00000000 sec
D11 0.03000000 sec
TD0 1

===== CHANNEL f1 =====
NUC1 13C
P1 12.30 usec
PL1 4.50 dB
PL1W 33.60015869 W
SFO1 125.7703643 MHz

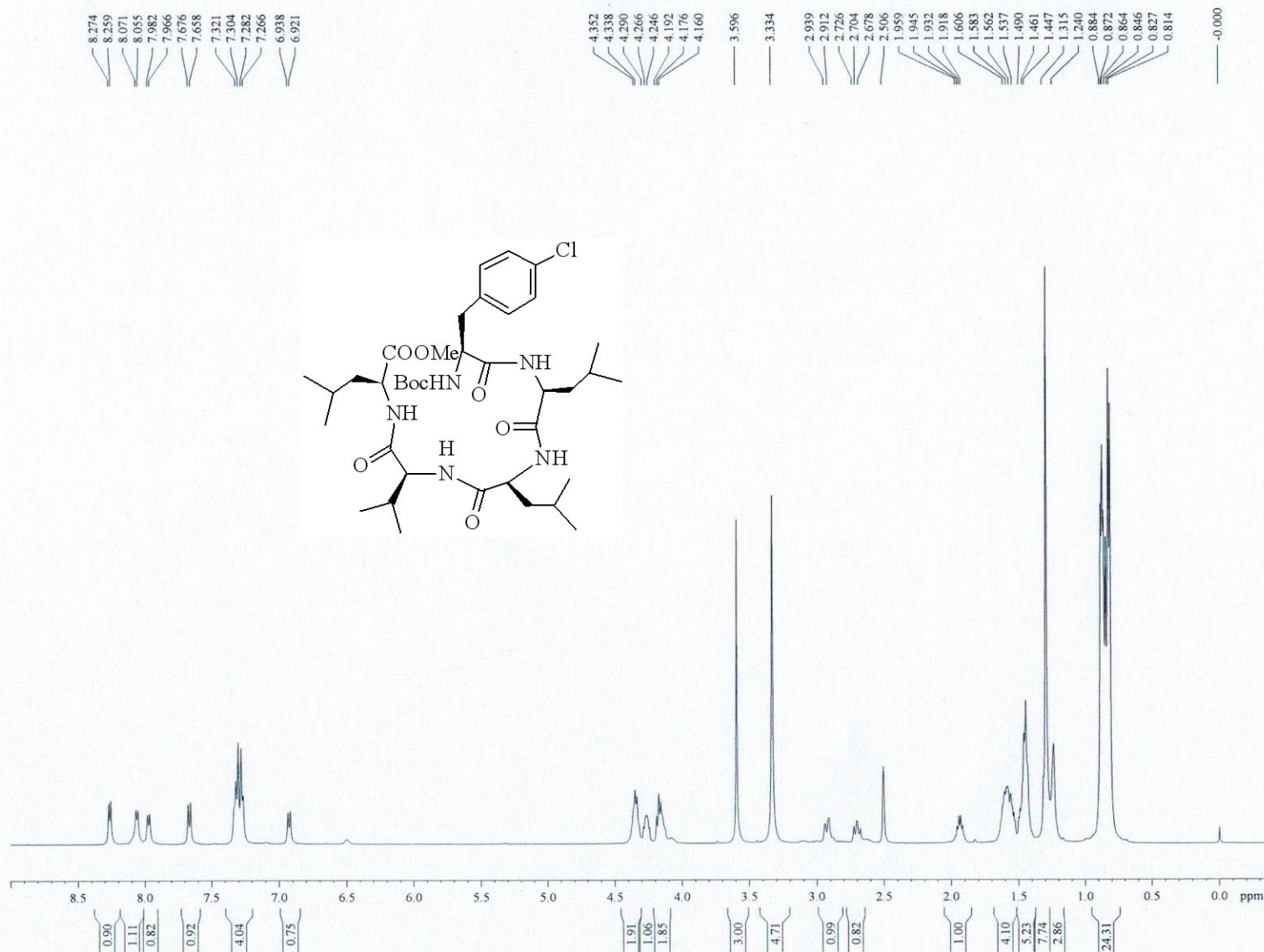
===== CHANNEL f2 =====
CPDPRG2 waltz16
NUC2 1H
PCPD2 80.00 usec
PL2 2.00 dB
PL12 17.78 dB
PL13 17.78 dB
PL2W 16.79986763 W
PL12W 0.44392112 W
PL13W 0.44392112 W
SFO2 500.1320005 MHz
SI 32768
SF 125.7577890 MHz
WDW EM
SSB 0
LB 2.00 Hz
GB 0
PC 1.40

liushouxin--zhb-p-cl-huanwutai

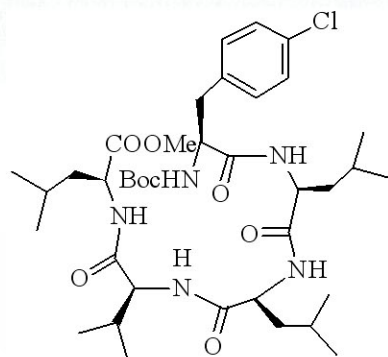
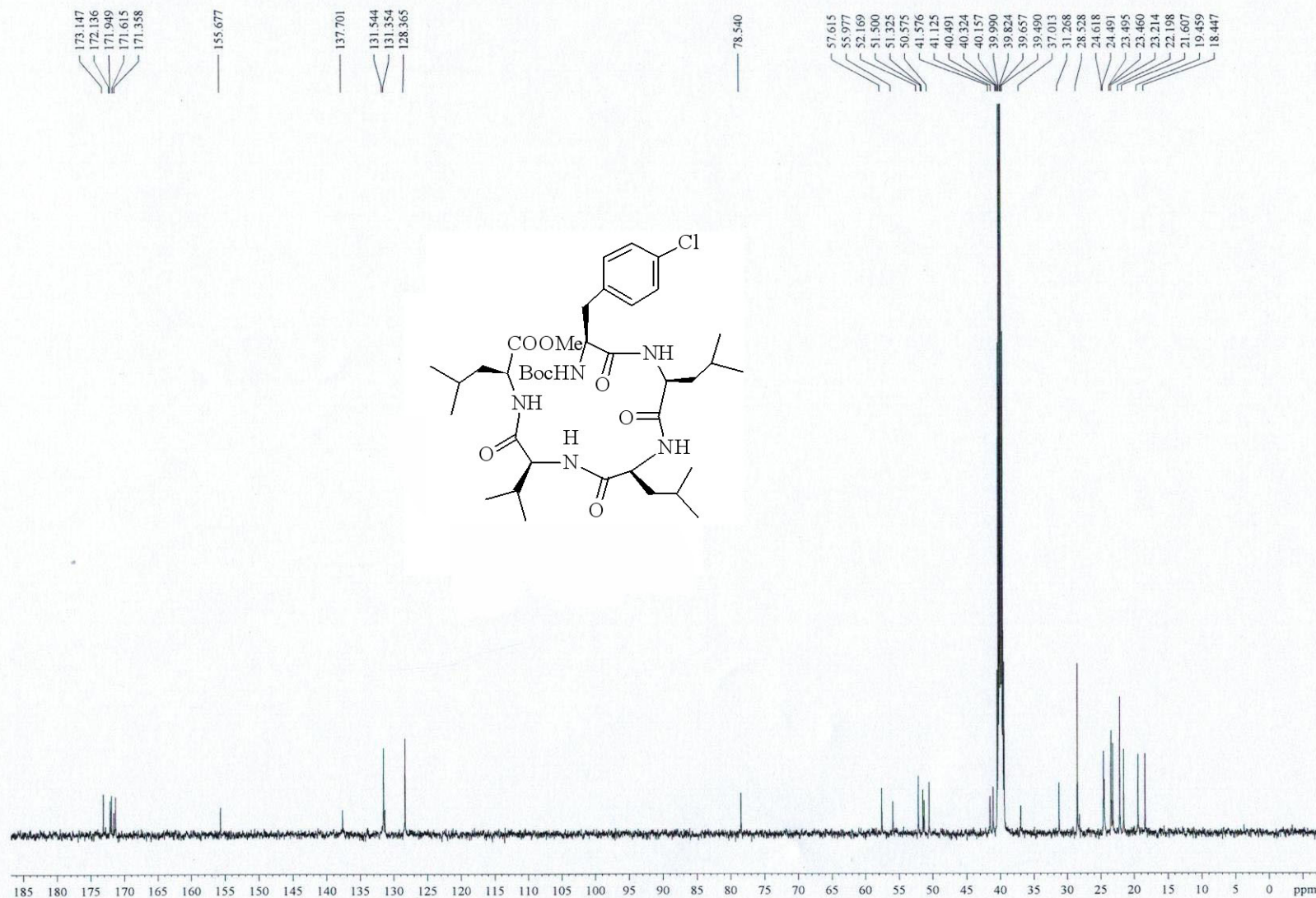


NAME 2013.03.23
EXPNO 10
PROCNO 1
Date_ 20130323
Time 15.12
INSTRUM spect
PROBHD 5 mm PABBO BB-
PULPROG zg30
TD 32768
SOLVENT DMSO
NS 8
DS 0
SWH 7500.000 Hz
FIDRES 0.228882 Hz
AQ 2.1845834 sec
RG 80.6
DW 66.667 usec
DE 6.50 usec
TE 298.0 K
D1 1.00000000 sec
TD0 1

===== CHANNEL f1 =====
NUC1 1H
P1 13.00 usec
PL1 2.00 dB
PL1W 16.79986763 W
SFO1 500.1330885 MHz
SI 32768
SF 500.1300022 MHz
WDW EM
SSB 0
LB 0.30 Hz
GB 0
PC 1.00



liushouxin-zhb-p-cl-huanwutai

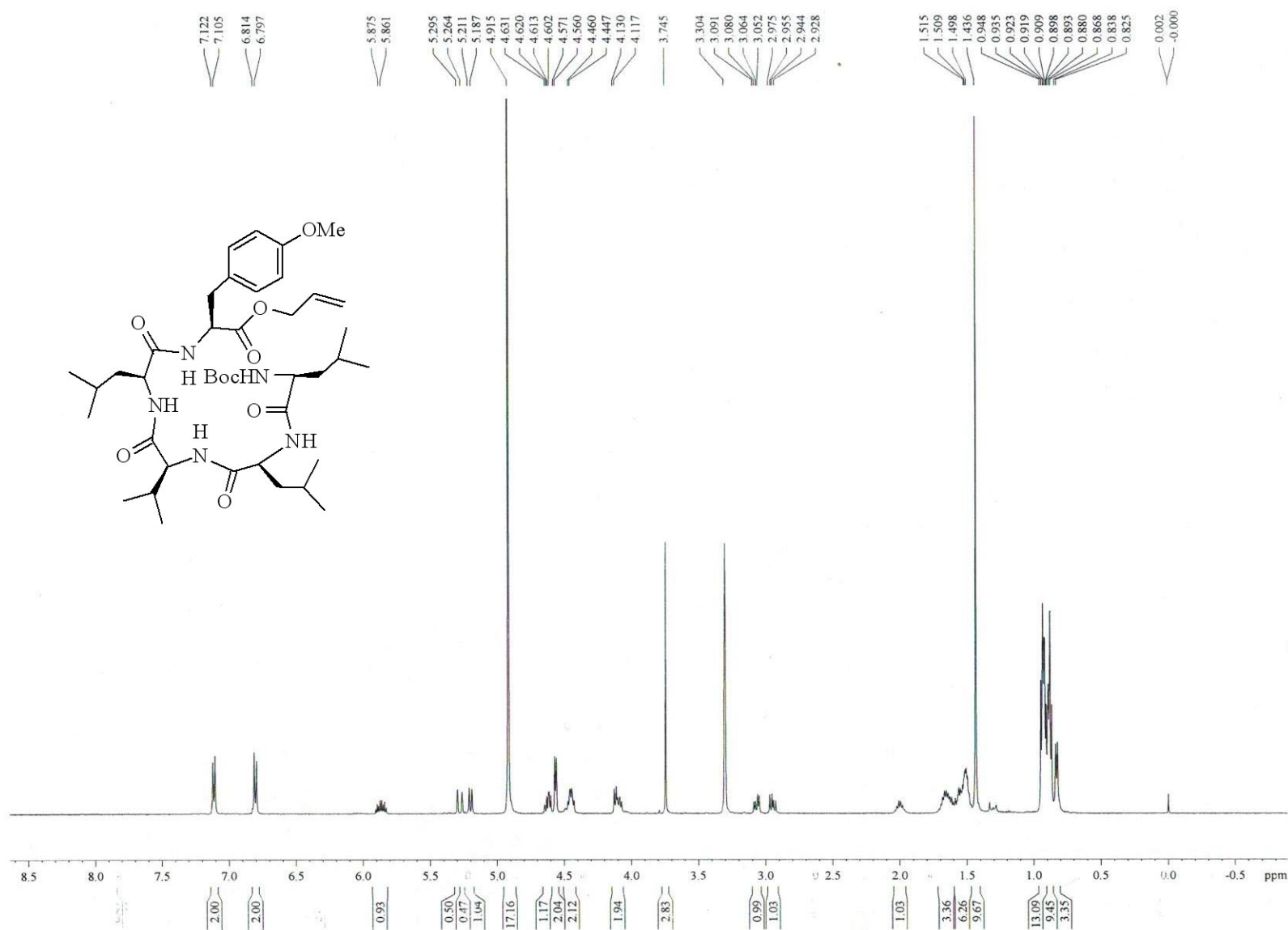


NAME 2013.03.23
EXPNO 11
PROCNO 1
Date_ 20130323
Time_ 15.18
INSTRUM spect
PROBHD 5 mm PABBO BB-
PULPROG zgpg30
TD 16384
SOLVENT DMSO
NS 218
DS 0
SWH 29761.904 Hz
FIDRES 1.816522 Hz
AQ 0.2753012 sec
RG 2050
DW 16.800 usec
DE 6.50 usec
TE 298.1 K
D1 2.00000000 sec
D11 0.03000000 sec
TD0 1

===== CHANNEL f1 =====
NUC1 13C
P1 12.30 usec
PL1 4.50 dB
PL1W 33.60015869 W
SFO1 125.7703643 MHz

===== CHANNEL f2 =====
CPDPRG2 waltz16
NUC2 1H
PCPD2 80.00 usec
PL2 2.00 dB
PL12 17.78 dB
PL13 17.78 dB
PL2W 16.79986763 W
PL12W 0.44392112 W
PL13W 0.44392112 W
SFO2 500.1320005 MHz
SI 32768
SF 125.7577890 MHz
WDW EM
SSB 0
LB 3.00 Hz
GB 0
PC 1.40

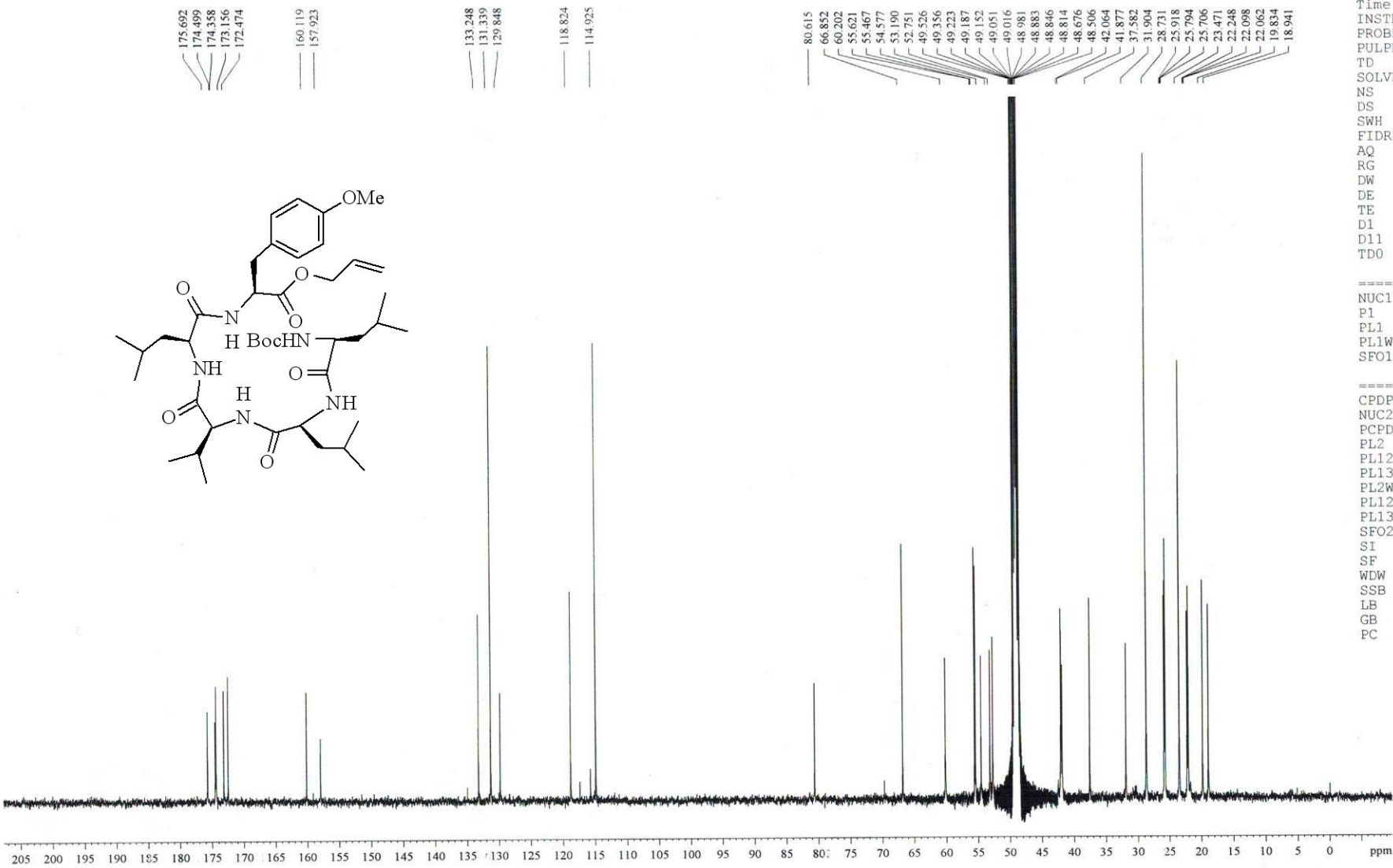
liu shou xin LIU



NAME 2012.03.23
EXPNO 7
PROCNO 1
Date_ 20120323
Time 14.30
INSTRUM spect
PROBHD 5 mm PABBO BB-
PULPROG zg30
TD 65536
SOLVENT MeOD
NS 1
DS 2
SWH 10000.000 Hz
FIDRES 0.152588 Hz
AQ 3.2768500 sec
RG 181
DW 50.000 usec
DE 6.50 usec
TE 290.8 K
D1 1.00000000 sec
TD0 1

===== CHANNEL f1 =====
NUC1 1H
P1 13.00 usec
PL1 2.00 dB
PL1W 16.79986763 W
SFO1 500.1340010 MHz
SI 32768
SF 500.1300137 MHz
WDW EM
SSB 0
LB 0.30 Hz
GB 0
PC 1.00

liu shou xin LIU



NAME 2012.03.27
EXPNO 9
PROCNO 1
Date_ 20120327
Time_ 17.06
INSTRUM spect
PROBHD 5 mm PABBO BB-
PULPROG zgpg30
TD 16384
SOLVENT MeOD
NS 24106
DS 0
SWH 29761.904 Hz
FIDRES 1.816522 Hz
AQ 0.2753012 sec
RG 2050
DW 16.800 usec
DE 6.50 usec
TE 292.8 K
D1 2.00000000 sec
D11 0.03000000 sec
TD0 1

===== CHANNEL f1 =====
NUC1 13C
P1 12.30 usec
PL1 4.50 dB
PL1W 33.60015869 W
SFO1 125.7703643 MHz

===== CHANNEL f2 =====
CPDPRG2 waltz16
NUC2 1H
PCPD2 80.00 usec
PL2 2.00 dB
PL12 17.78 dB
PL13 17.78 dB
PL2W 16.79986763 W
PL12W 0.44392112 W
PL13W 0.44392112 W
SFO2 500.1320005 MHz
SI 32768
SF 125.7576104 MHz
WDW EM
SSB 0
LB 2.00 Hz
GB 0
PC 1.40