

Data File : D:\CHEMSTATION\DATA-2013\DECEMBER\191213\MASS000022.D

Sample Name : 6 b

Acq. Operator : Jyothi

Acq. Instrument : Instrument 1

Location : Vial 12

Injection Date : 12/19/2013 4:19:23 PM

Inj Volume : 5.000 µl

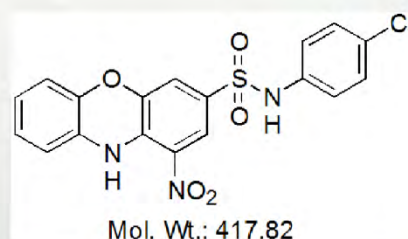
Acq. Method : C:\CHEM32\1\METHODS\DIP MASS-ESI.M

Last changed : 12/19/2013 3:33:08 PM by Jyothi
(modified after loading)

Analysis Method : C:\CHEM32\1\METHODS\DIP MASS-ESI.M

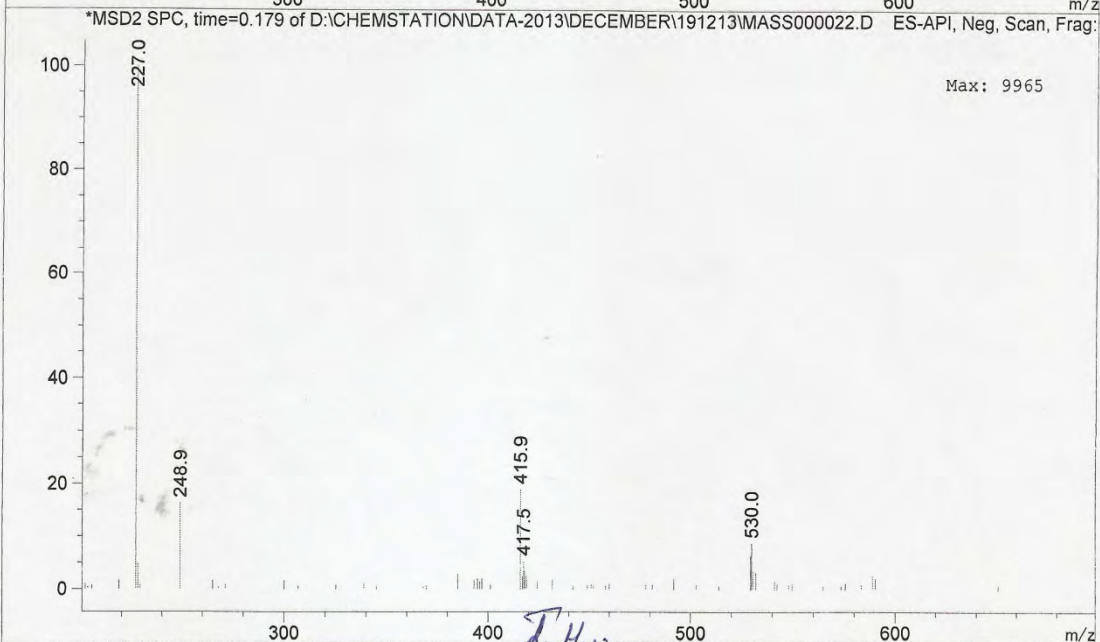
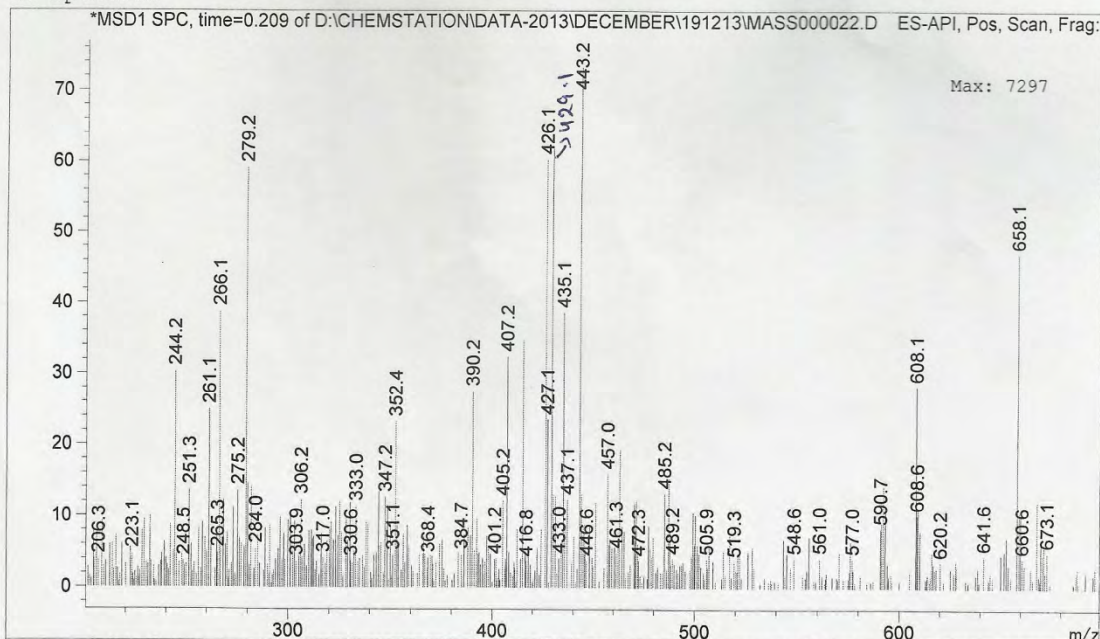
Last changed : 12/19/2013 4:12:55 PM by Jyothi
(modified after loading)

Sample Info :



Additional Info : Peak(s) manually integrated

MS Spectrum



Print of window 80: MS Spectrum

Data File : D:\CHEMSTATION\DATA-2013\DECEMBER\191213\MASS000025.D

Sample Name : 6 e

Acq. Operator : Jyothi

Acq. Instrument : Instrument 1

Location : Vial 15

Injection Date : 12/19/2013 4:24:00 PM

Inj Volume : 5.000 µl

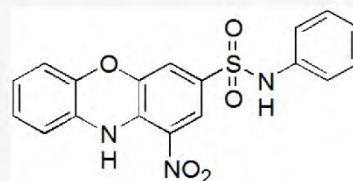
Acq. Method : C:\CHEM32\1\METHODS\DIP MASS-ESI.M

Last changed : 12/19/2013 3:33:08 PM by Jyothi
(modified after loading)

Analysis Method : C:\CHEM32\1\METHODS\DIP MASS-ESI.M

Last changed : 12/19/2013 4:12:55 PM by Jyothi
(modified after loading)

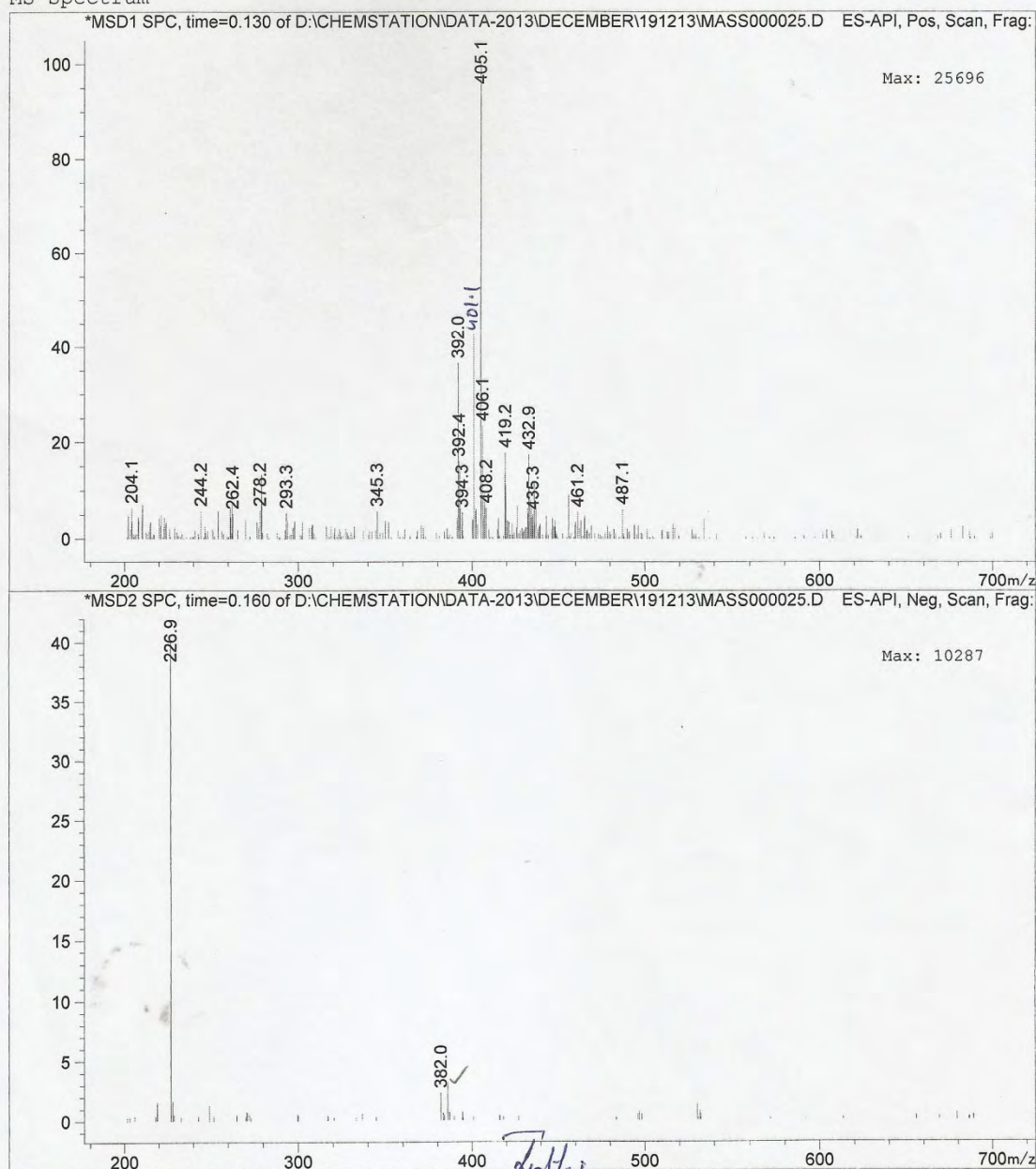
Sample Info :



Mol. Wt.: 383.38

Additional Info : Peak(s) manually integrated

MS Spectrum



Instrument 1 12/19/2013 4:34:00 PM Jyothi

Page 1 of 1

Jyothi
19/12/13

Print of window 80: MS Spectrum

Data File : D:\CHEMSTATION\DATA-2013\DECEMBER\191213\MASS000016.D

Sample Name : 6 J

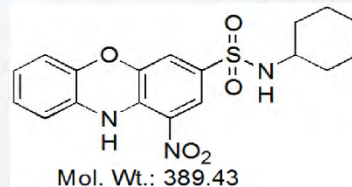
=====

Acq. Operator : Jyothi
Acq. Instrument : Instrument 1 Location : Vial 6
Injection Date : 12/19/2013 3:58:44 PM Inj Volume : 5.000 µl

Acq. Method : C:\CHEM32\1\METHODS\DIP MASS-ESI.M
Last changed : 12/19/2013 3:33:08 PM by Jyothi
(modified after loading)

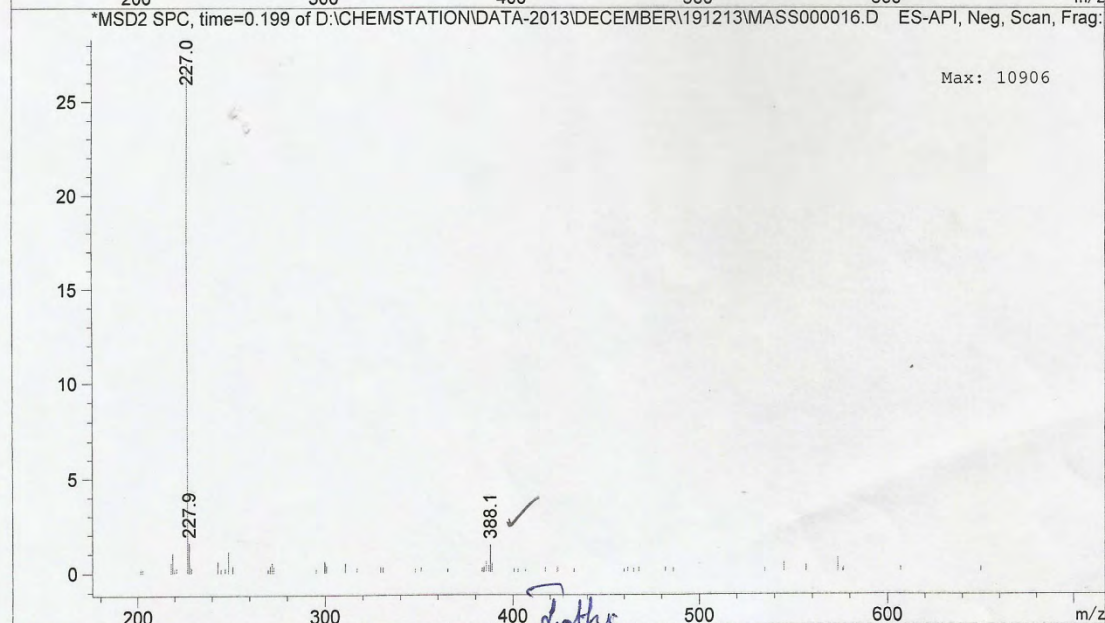
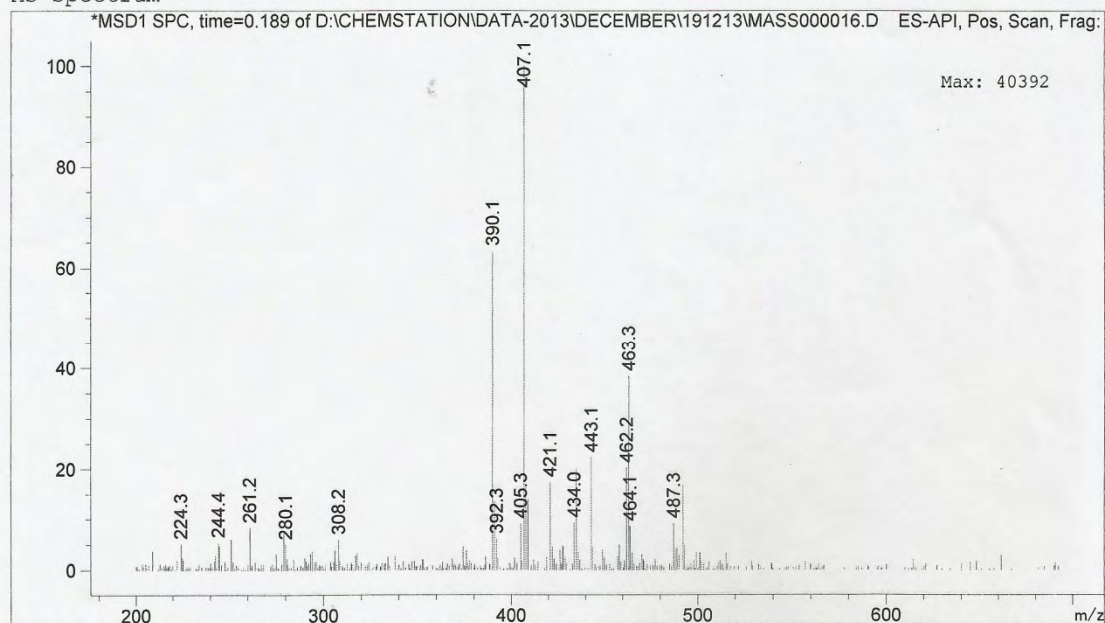
Analysis Method : C:\CHEM32\1\METHODS\DIP MASS-ESI.M
Last changed : 12/19/2013 4:12:55 PM by Jyothi
(modified after loading)

Sample Info :



Additional Info : Peak(s) manually integrated

MS Spectrum

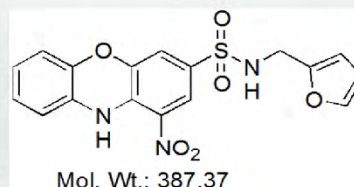


Print of window 80: MS Spectrum

Data File : D:\CHEMSTATION\DATA-2013\DECEMBER\191213\MASS000024.D
Sample Name : 6 L

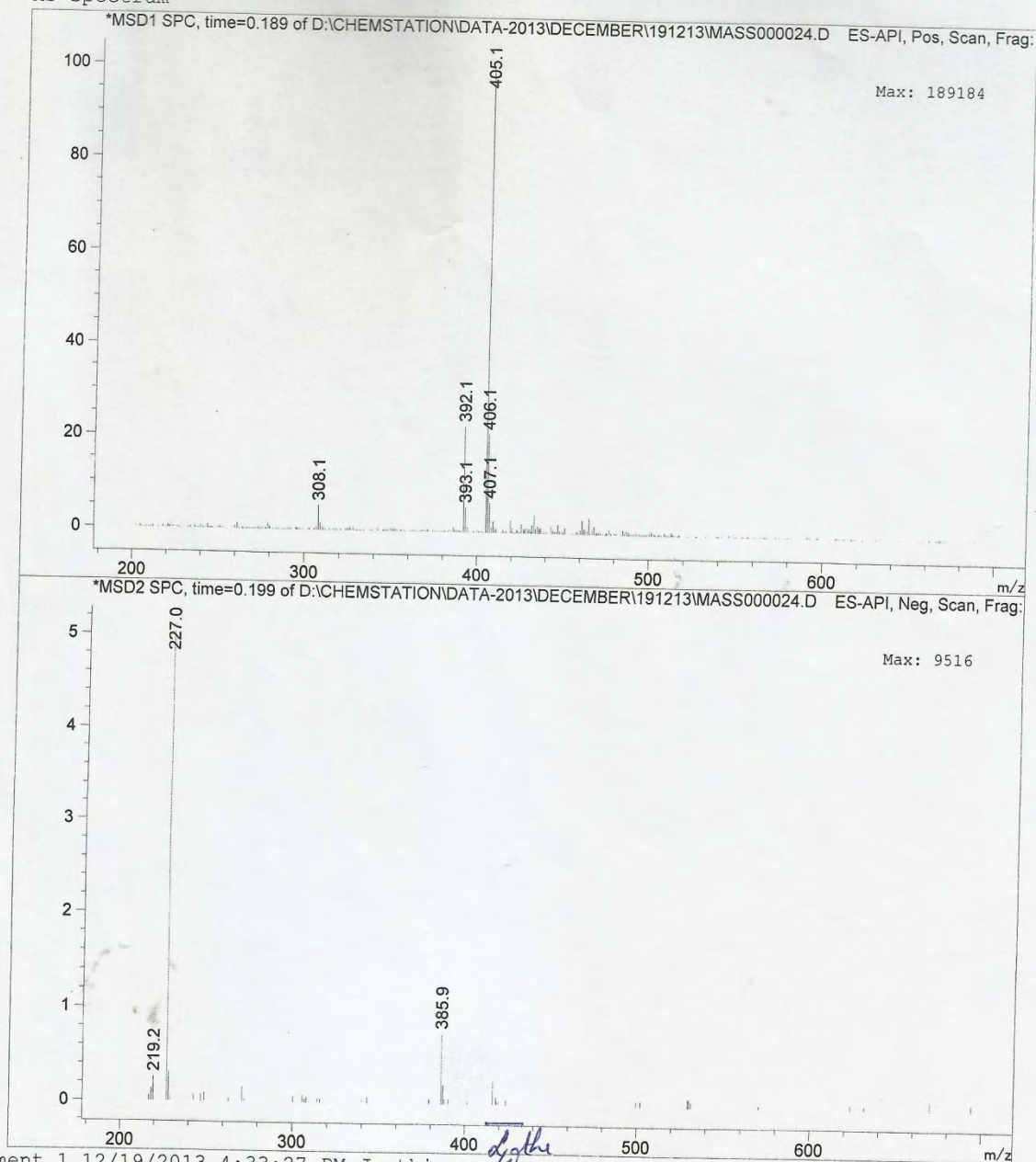
=====

Acq. Operator	: Jyothi	
Acq. Instrument	: Instrument 1	Location : Vial 14
Injection Date	: 12/19/2013 4:22:24 PM	
		Inj Volume : 5.000 µl
Acq. Method	: C:\CHEM32\1\METHODS\DIP	MASS-ESI.M
Last changed	: 12/19/2013 3:33:08 PM by Jyothi	(modified after loading)
Analysis Method	: C:\CHEM32\1\METHODS\DIP	MASS-ESI.M
Last changed	: 12/19/2013 4:12:55 PM by Jyothi	(modified after loading)
Sample Info	:	



Additional Info : Peak(s) manually integrated

MS Spectrum



Jyothi
19/12/13

Print of window 80: MS Spectrum

Data File : D:\CHEMSTATION\DATA-2013\DECEMBER\191213\MASS000011.D

Sample Name : 6m

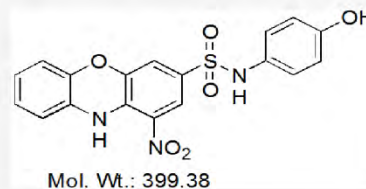
=====

Acq. Operator : Jyothi
 Acq. Instrument : Instrument 1 Location : Vial 1
 Injection Date : 12/19/2013 3:24:17 PM Inj Volume : 2.000 µl

Acq. Method : C:\CHEM32\1\METHODS\DIP MASS-ESI.M
 Last changed : 12/19/2013 3:23:12 PM by Jyothi
 (modified after loading)

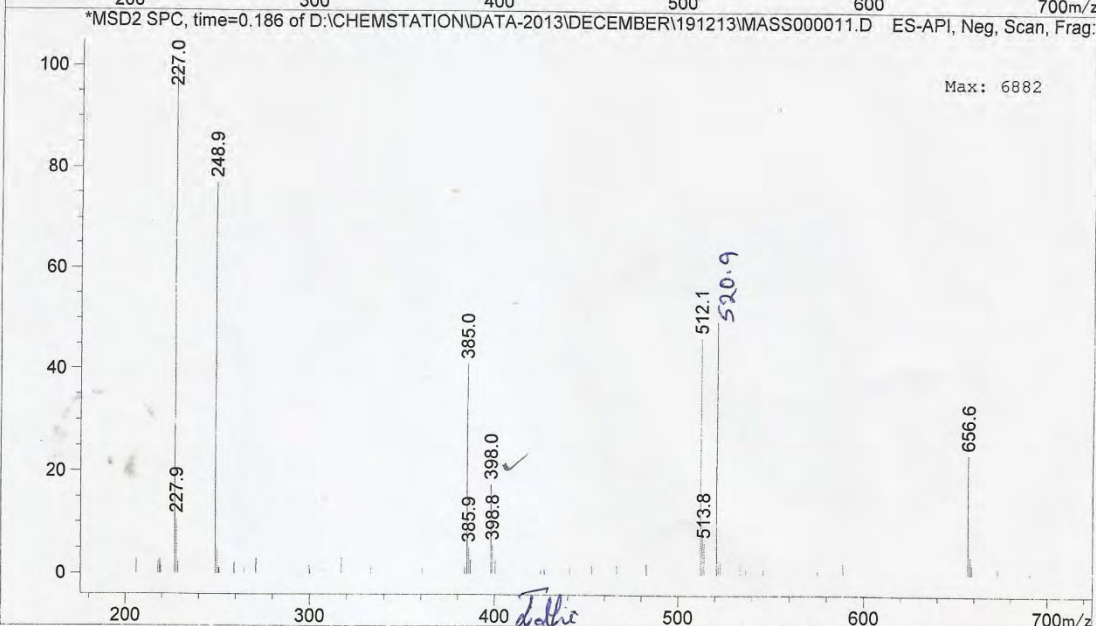
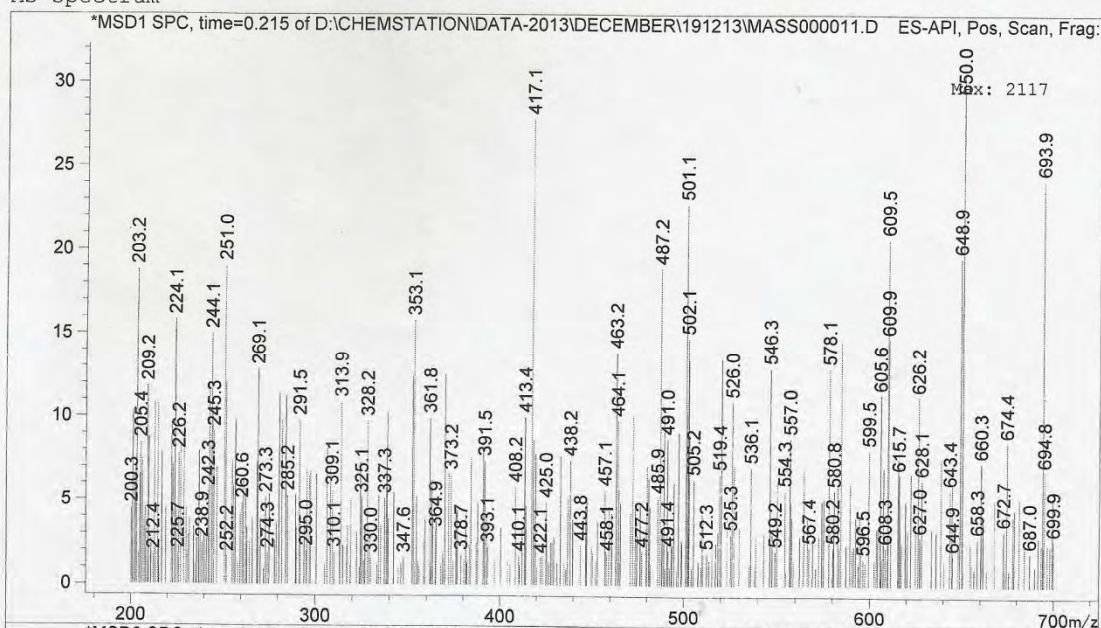
Analysis Method : C:\CHEM32\1\METHODS\DIP MASS-ESI.M
 Last changed : 12/19/2013 4:12:55 PM by Jyothi
 (modified after loading)

Sample Info :



Additional Info : Peak(s) manually integrated

MS Spectrum



19/12/13

Print of window 80: MS Spectrum

Data File : D:\CHEMSTATION\DATA-2013\DECEMBER\191213\MASS000023.D

Sample Name : 6S

Acq. Operator : Jyothi

Acq. Instrument : Instrument 1

Location : Vial 13

Injection Date : 12/19/2013 4:20:52 PM

Inj Volume : 5.000 µl

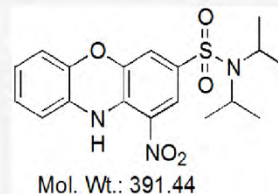
Acq. Method : C:\CHEM32\1\METHODS\DIP MASS-ESI.M

Last changed : 12/19/2013 3:33:08 PM by Jyothi
(modified after loading)

Analysis Method : C:\CHEM32\1\METHODS\DIP MASS-ESI.M

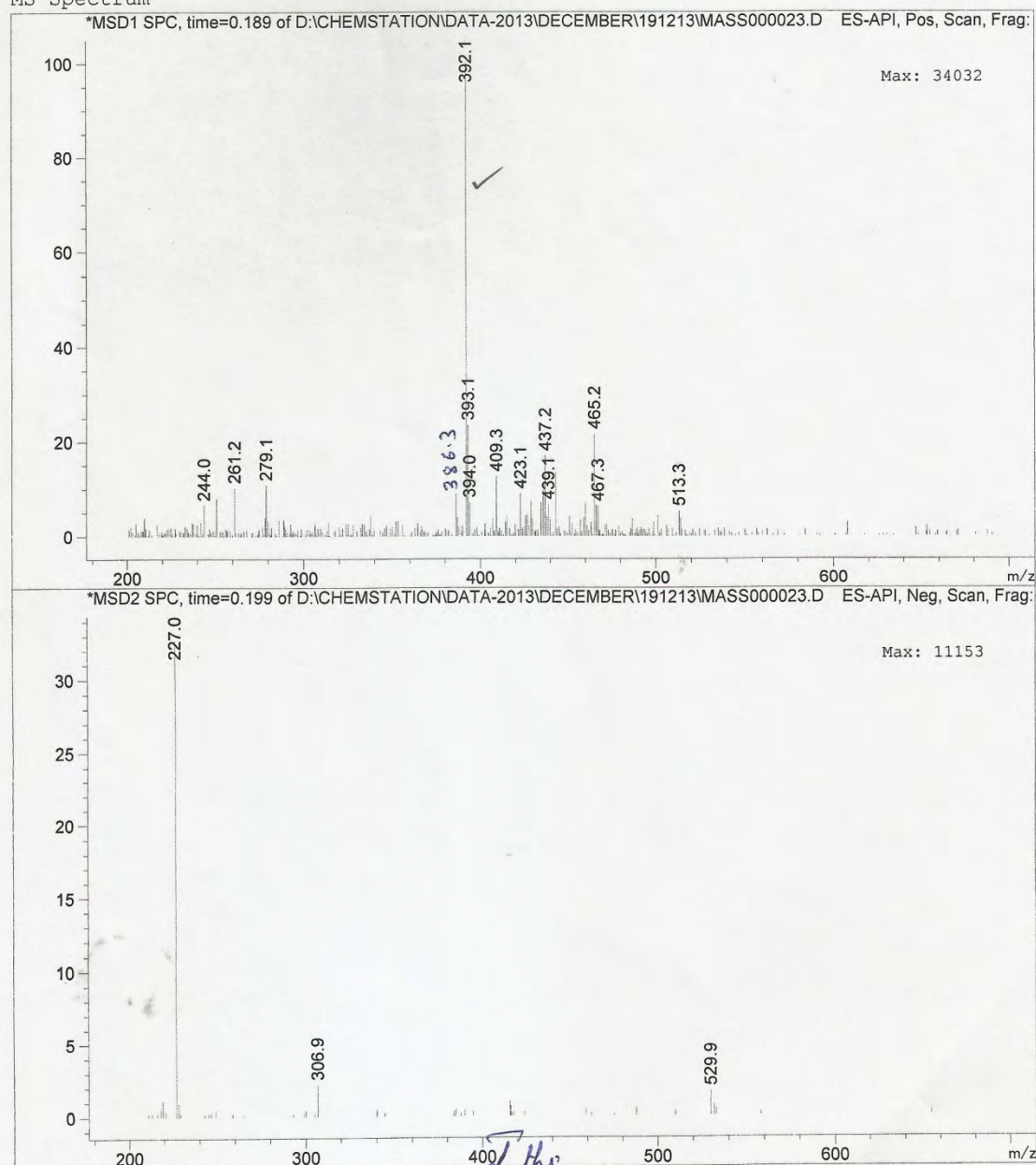
Last changed : 12/19/2013 4:12:55 PM by Jyothi
(modified after loading)

Sample Info :



Additional Info : Peak(s) manually integrated

MS Spectrum



Data File : D:\CHEMSTATION\DATA-2013\DECEMBER\191213\MASS000015.D

Sample Name : 6t

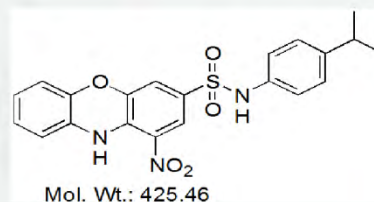
=====

Acq. Operator : Jyothi
 Acq. Instrument : Instrument 1 Location : Vial 5
 Injection Date : 12/19/2013 3:57:07 PM Inj Volume : 5.000 µl

Acq. Method : C:\CHEM32\1\METHODS\DIP MASS-ESI.M
 Last changed : 12/19/2013 3:33:08 PM by Jyothi
 (modified after loading)

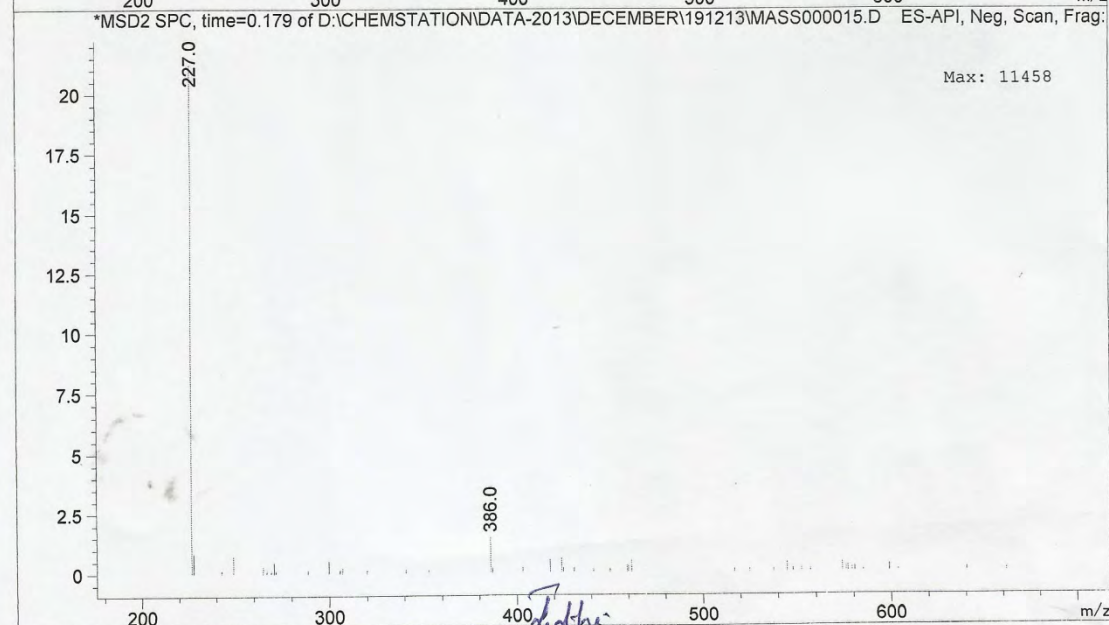
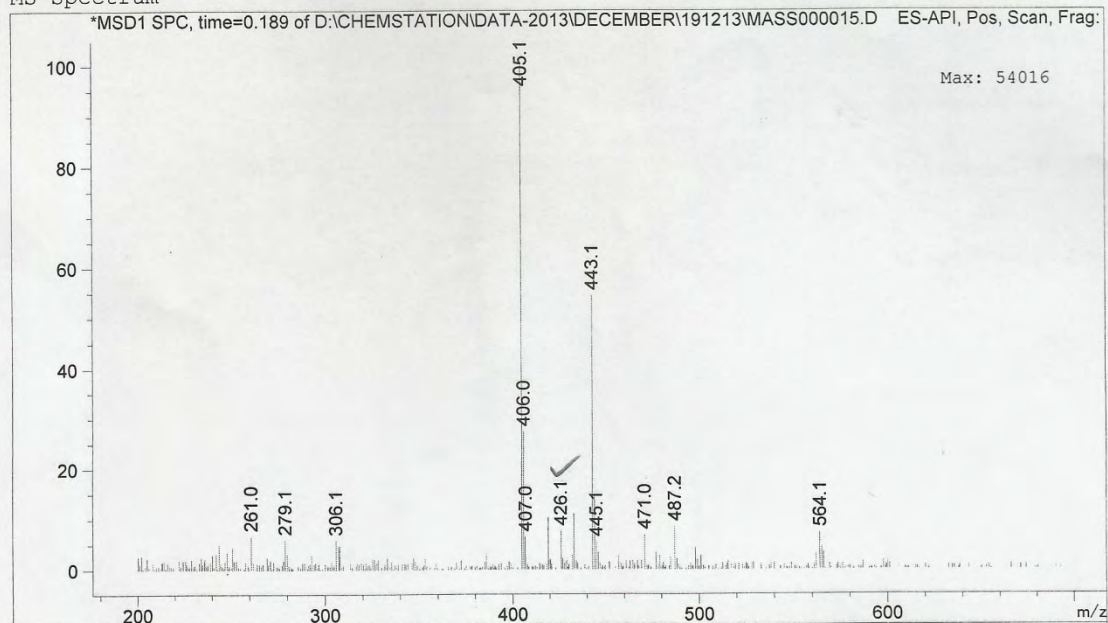
Analysis Method : C:\CHEM32\1\METHODS\DIP MASS-ESI.M
 Last changed : 12/19/2013 4:12:55 PM by Jyothi
 (modified after loading)

Sample Info :



Additional Info : Peak(s) manually integrated

MS Spectrum



Jyothi
19/12/13

Print of window 80: MS Spectrum

Data File : D:\CHEMSTATION\DATA-2013\DECEMBER\191213\MASS000026.D

Sample Name : 6u

Acq. Operator : Jyothi

Acq. Instrument : Instrument 1

Location : Vial 16

Injection Date : 12/19/2013 4:25:51 PM

Inj Volume : 5.000 µl

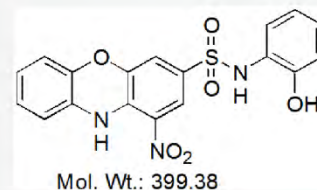
Acq. Method : C:\CHEM32\1\METHODS\DIP MASS-ESI.M

Last changed : 12/19/2013 3:33:08 PM by Jyothi
(modified after loading)

Analysis Method : C:\CHEM32\1\METHODS\DIP MASS-ESI.M

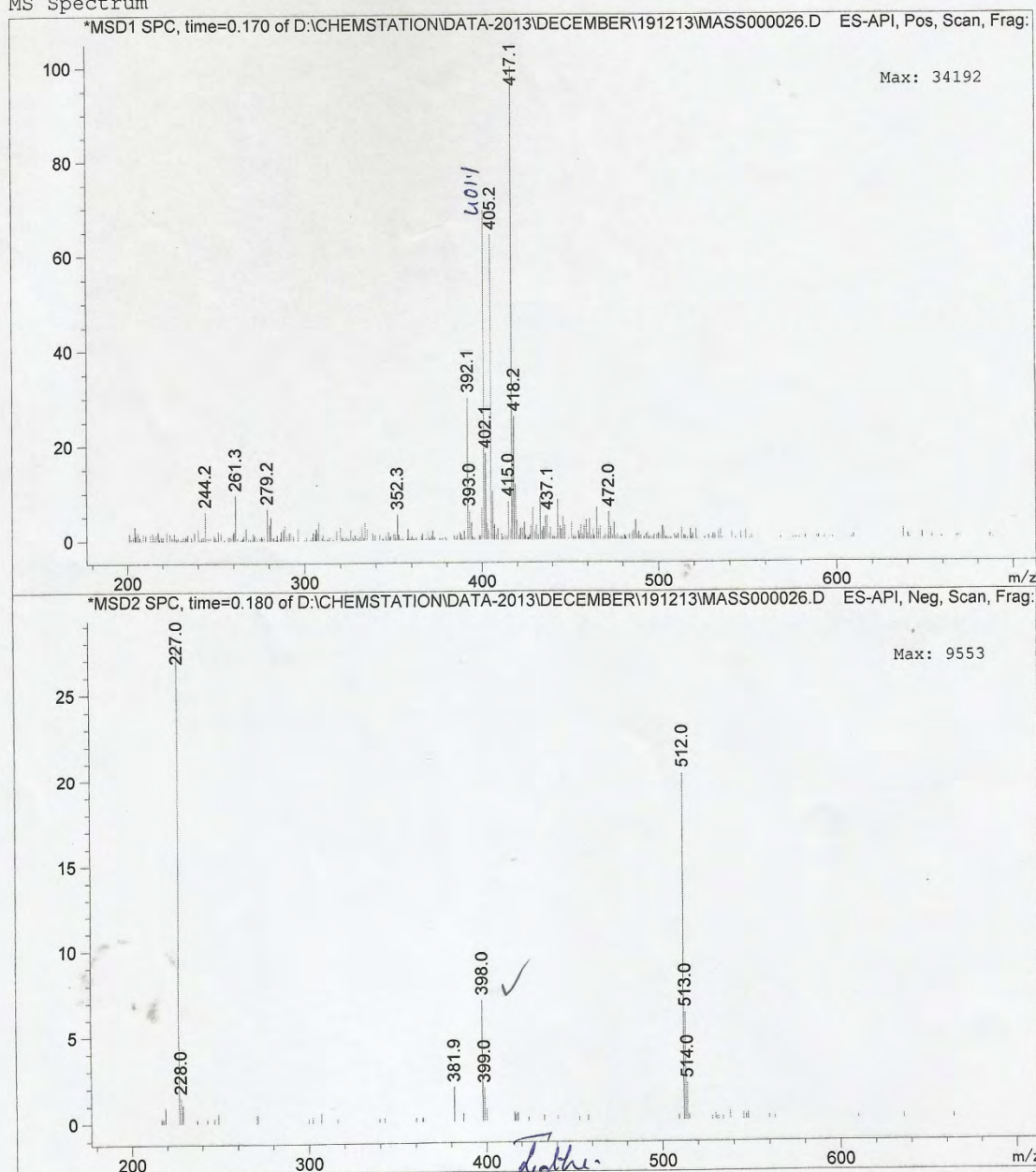
Last changed : 12/19/2013 4:12:55 PM by Jyothi
(modified after loading)

Sample Info :



Additional Info : Peak(s) manually integrated

MS Spectrum



Instrument 1 12/19/2013 4:34:21 PM Jyothi

Page 1 of 1