

Supporting informations

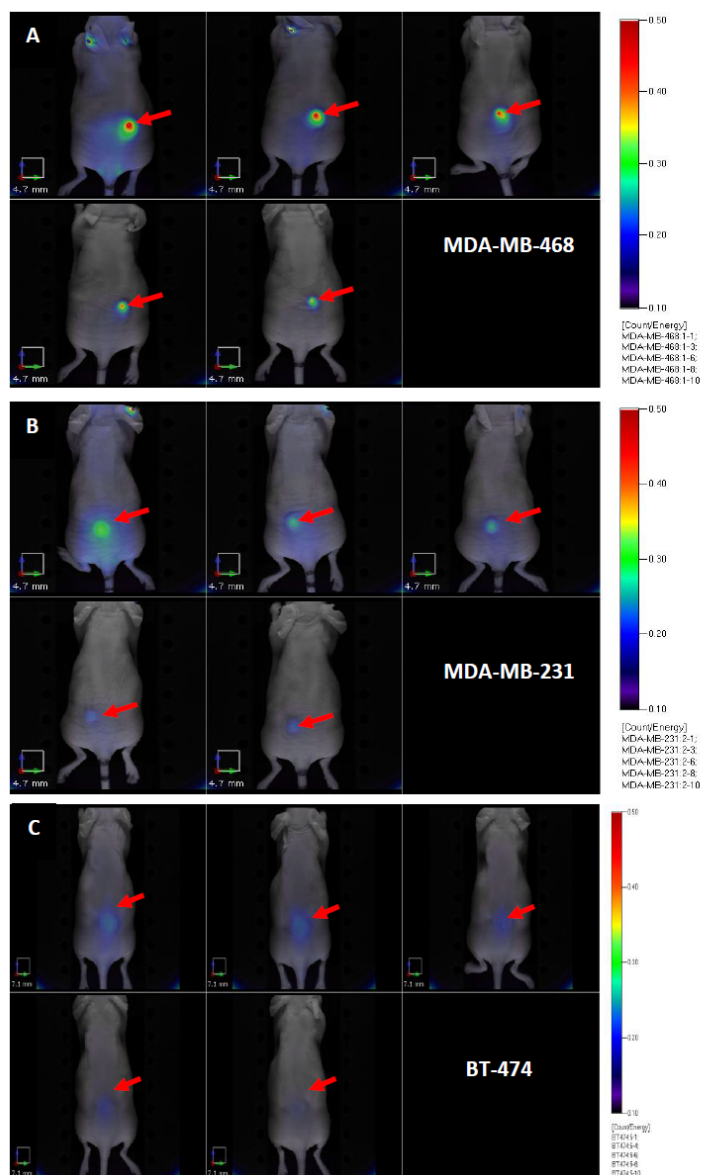


Figure S1: 2D epi-fluorescence FMT images of mice xenografts of different levels (very high, A; moderate, B; and very low, C) of EGFR-expression at various post injection time points (24, 48, 72, 96, 120 h). All images have the same color scale.

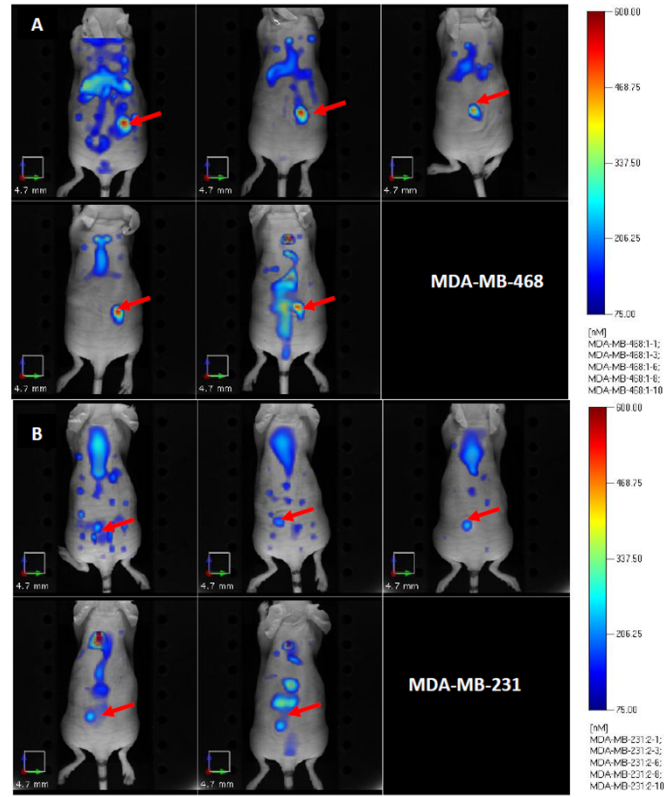


Figure S2: 3D trans-illumination FMT images of panitumumab-IRDye800 at various post-injection time-points in MDA-MB-468(A) and MDA-MB-231 (B) tumor bearing athymic nude female mouse models. The fluorescence signals from BT474 (low EGFR expression) were approximately similar to the background and therefore were not utilized in the 3D analysis. All images have the same color scale.