

Electronic Supplementary Information

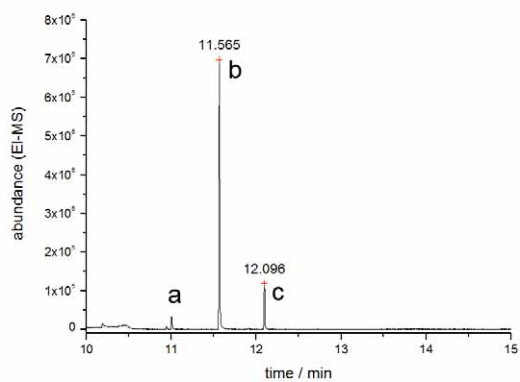


Figure S1: Ethylation of a Methylbismuth cysteine standard in aqueous solution

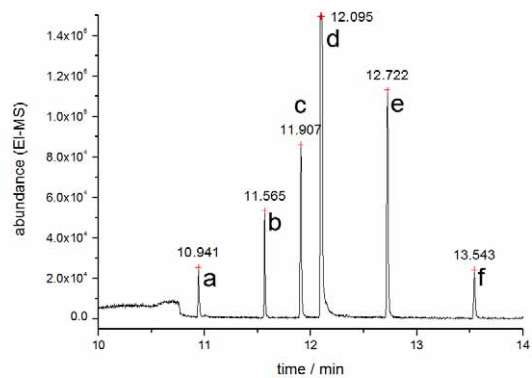


Figure S4: Ethylation of HepG2 cell lysate after incubation with bismuth cysteine

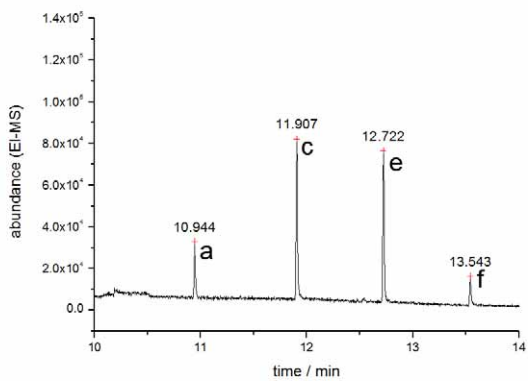


Figure S2: Blank without incubation

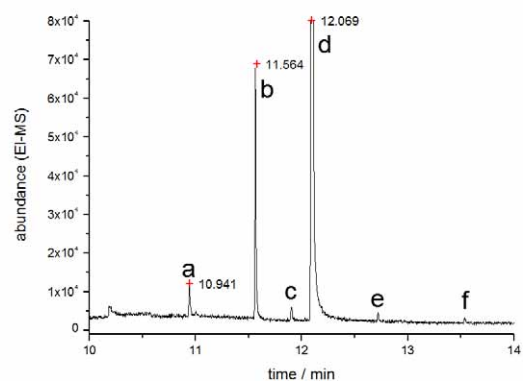


Figure S5: Ethylation of HepG2 cell lysate after incubation with CBS

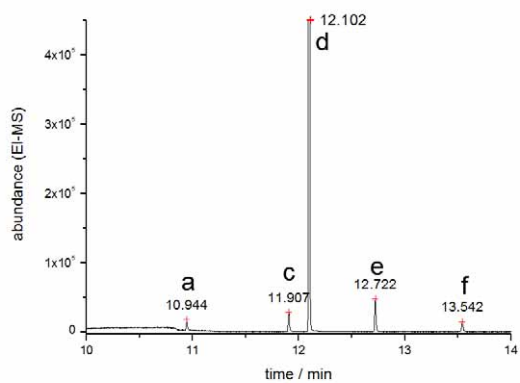


Figure S3: Blank without HepG2