

Supplementary Information

Cold-adapted arsenite oxidase from a psychrotolerant *Polaromonas* species

Thomas H. Osborne^a, Matthew D. Heath^a, Andrew C. R. Martin^a, Jaroslaw A. Pankowski^a, Karen A. Hudson-Edwards^b, Joanne M. Santini^{a*}

^a Institute of Structural and Molecular Biology, University College London, Gower Street, London, WC1E 6BT, UK

^b Department of Earth and Planetary Sciences, Birkbeck, University of London, Malet Street, London, WC1E 7HX

* Correspondence Joanne M. Santini j.santini@ucl.ac.uk

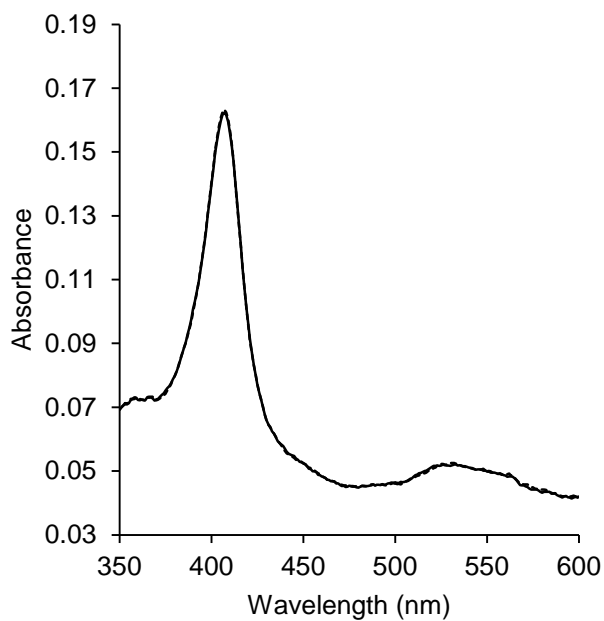


Fig. S1 Spectra of horse-heart cytochrome *c*. Horse-heart cytochrome *c* alone (solid line) and in the presence of GM1 Aio and arsenite (dashed line).

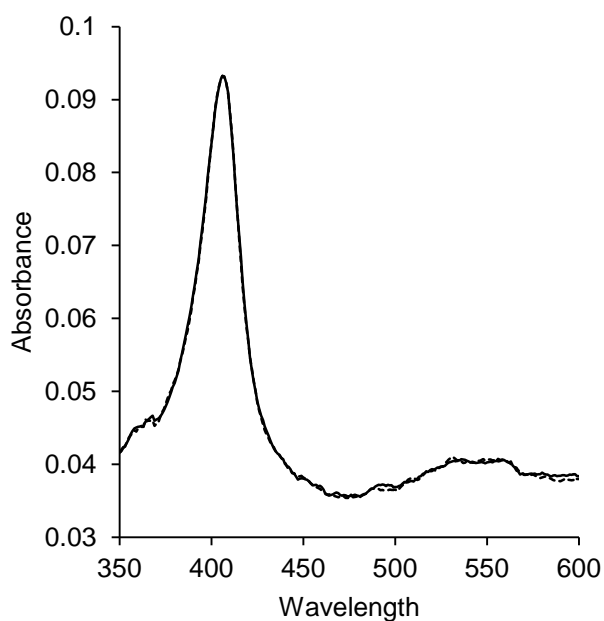


Fig. S2 Spectra of NT-26 cytochrome *c*₅₅₂. NT-26 cytochrome *c*₅₅₂ alone (solid line) and in the presence of GM1 Aio and arsenite (dashed line).

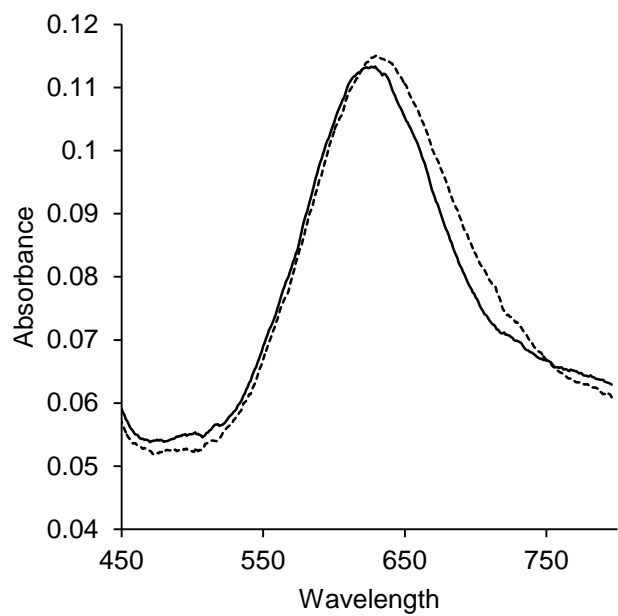


Fig. S3 Spectra of *P. aeruginosa* azurin. Azurin in the presence of GM1 Aio alone (solid line), and arsenite alone (dashed line).