

Tight inclusion complexation of 2,7-dimethyldiazapyrenium in cucurbit[7]uril

Vladimir Sindelar, Mabel A. Cejas, Francisco M. Raymo and Angel E. Kaifer*

Center for Supramolecular Science and Department of Chemistry, University of Miami, Coral Gables, FL 33124-0431. E-mail: akaifer@miami.edu

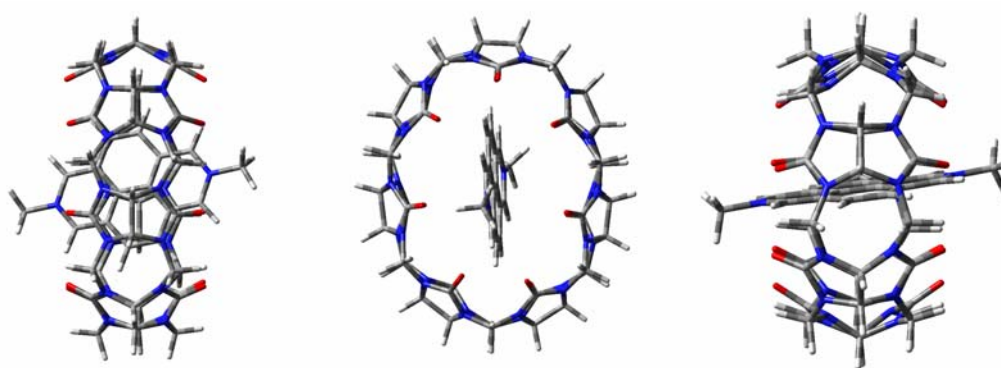


Figure S11. Views of the energy-minimized structure of the CB7•Me₂DAP²⁺ complex (AM1).

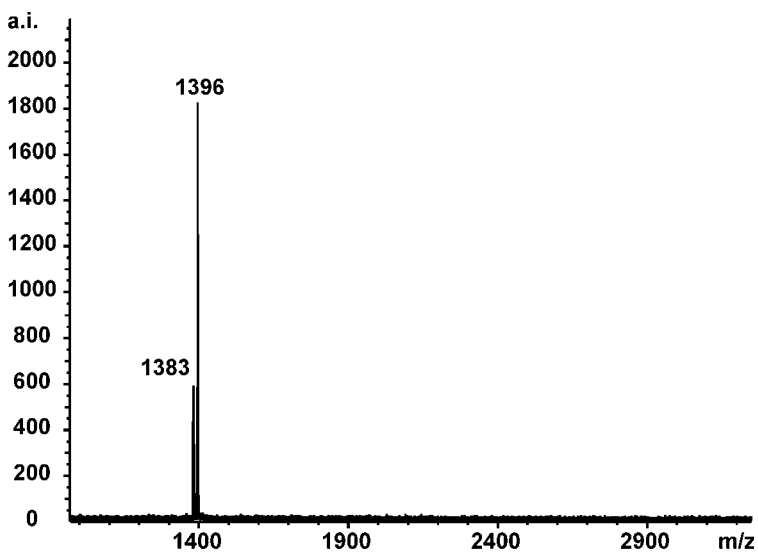


Figure S12. MALDI-TOF MS spectra of CB7•Me₂DAP²⁺ complex recorded from α -cyano-4-hydroxycinnamic acid solid matrix.

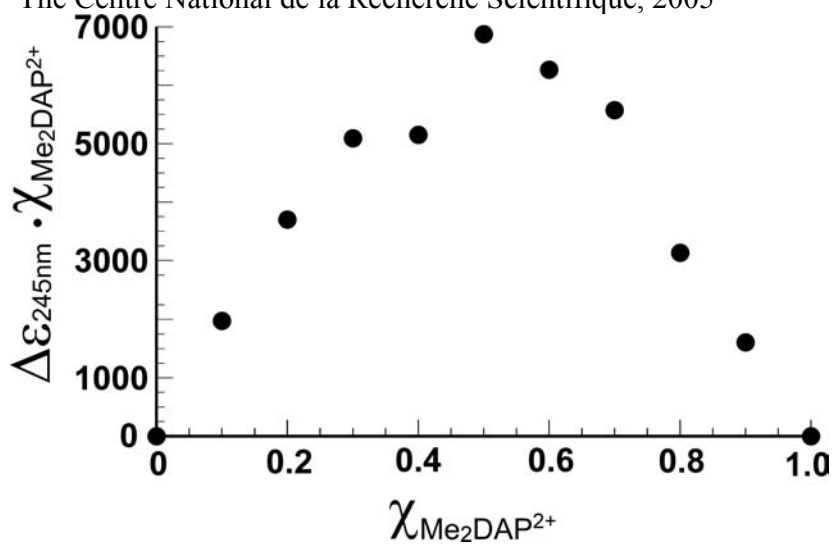


Figure S13. Job plot for $\text{CB7} \cdot \text{Me}_2\text{DAP}^{2+}$ complex ($[\text{CB7}] + [\text{Me}_2\text{DAP}^{2+}] = 12 \mu\text{M}$) in sodium phosphate buffer pH = 7.0 also containing 0.1 M NaCl.