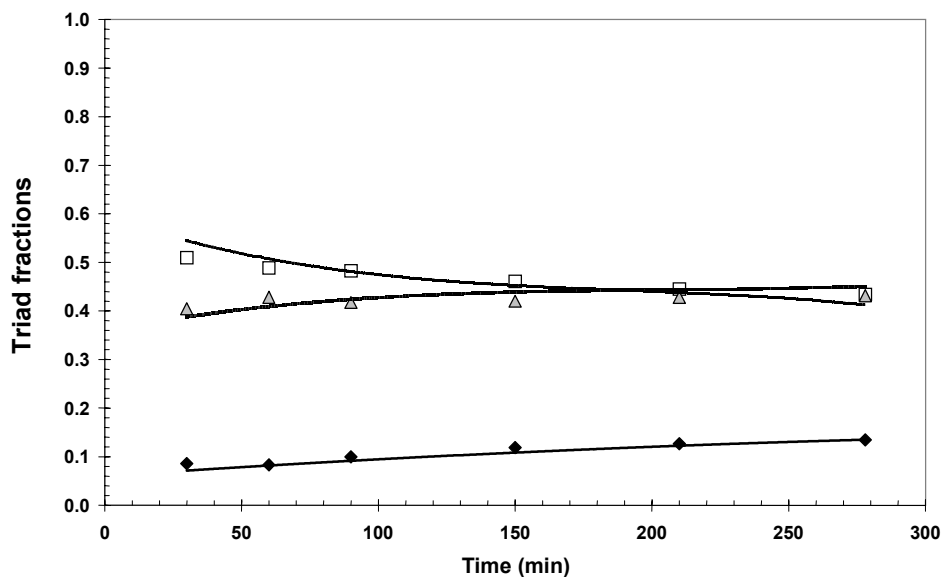
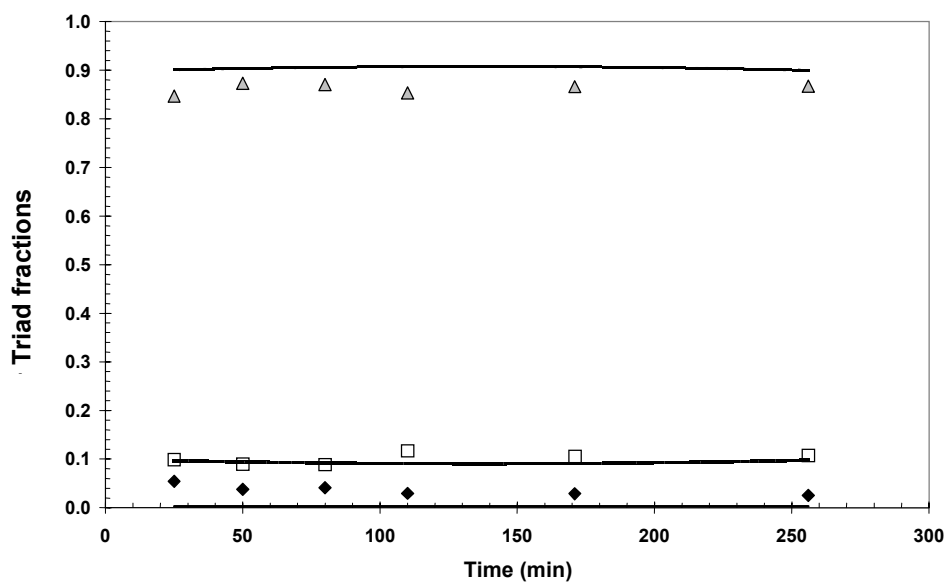


Supporting information



(a) Calculated (lines) and (b) ^1H NMR experimental (symbols) variations of triad fractions with time for fraction $f_a = 0.60$ (◆ MA/MA/MA □ MA/MA/S ▲ S/MA/S : MA centered triad).



(a) Calculated (lines) and (b) ^1H NMR experimental (symbols) variations of triad fractions with time for fraction $f_a = 0.20$ (◆ MA/MA/MA □ MA/A/S ▲ S/MA/S : MA centered triad).