

Supplementary Information

Fig. 1S DECRA plot of fitting the DPGSE experiment for the genistein, **1** (top), interaction with d(GCGATCGC)₂ octamer duplex (bottom). The two components are displayed separately.

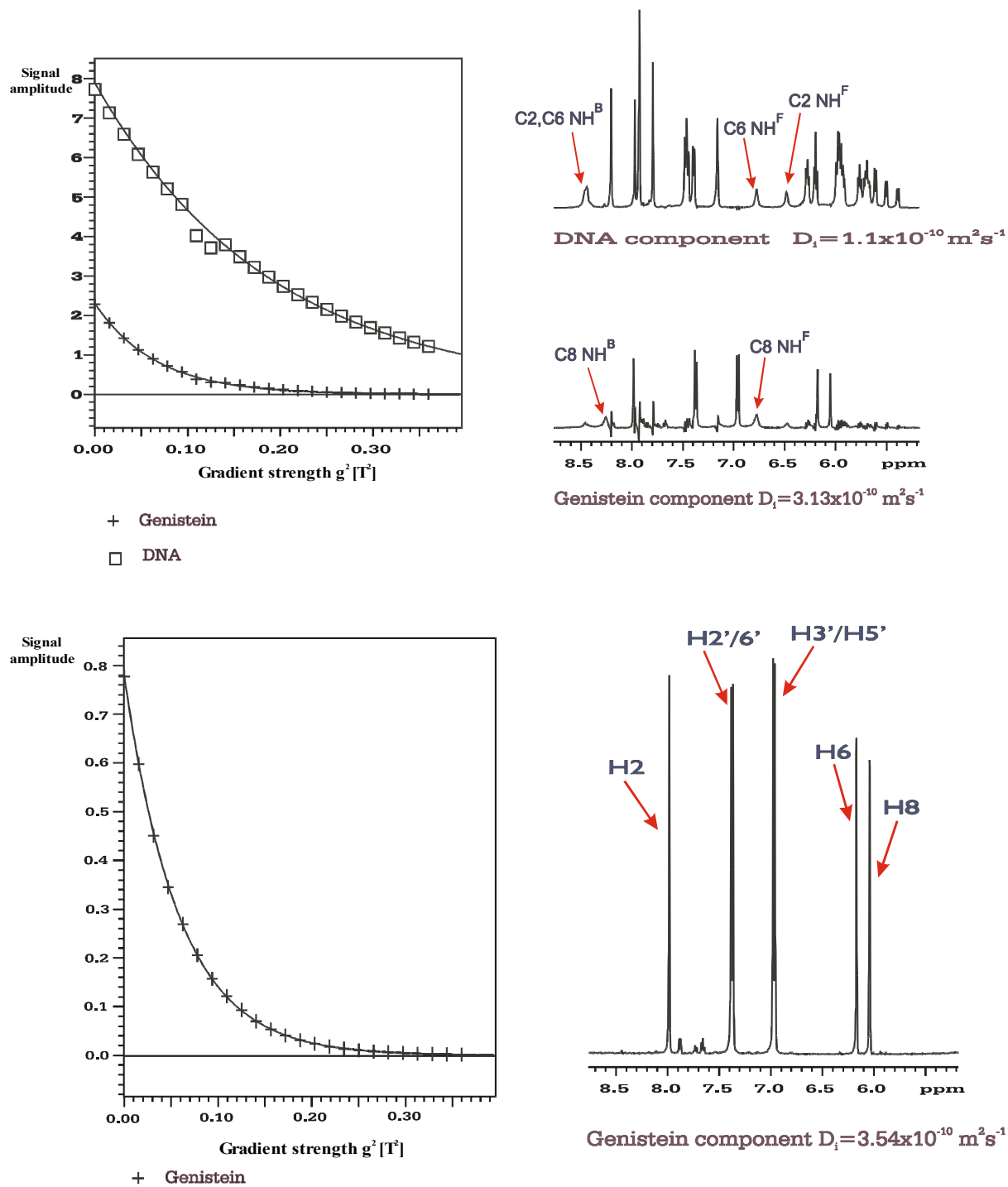


Table 1S DNMR results performed on d(GCGTACGC)₂ duplex DNA oligomer. Chemical shift are referenced vs. TSPA signal.

	G1/H8	G1/H1'	C2/H6	C2/H1'	C2/H5	G3/H8	G3/H1'	T4/H6	T4/H1'
5°C	7,994	6,010	7,426	5,773	5,373	7,977	6,010	7,269	5,650
10°C	7,995	6,013	7,445	5,775	5,387	7,969	6,013	7,260	5,660
20°C	7,990	6,017	7,448	5,785	5,407	7,952	6,017	7,247	5,677
30°C	7,979	6,017	7,446	5,791	5,421	7,936	6,017	7,233	5,689

	A5/H8	A5/H1'	A5/H2	C6/H6	C6/H1'	C6/H5	G7/H8	G7/H1'	C8/H6	C8/H1'	C8/H5
5°C	8,331	6,172	7,469	7,294	5,598	5,304	7,886	5,948	7,441	6,213	5,373
10°C	8,327	6,183	7,477	7,290	5,604	5,310	7,888	5,952	7,445	6,213	5,387
20°C	8,316	6,199	7,494	7,283	5,614	5,316	7,886	5,955	7,462	6,213	5,466
30°C	8,305	6,208	7,506	7,272	5,621	5,320	7,880	5,959	7,474	6,213	5,503

Fig. 2S Temperature dependence of chemical shifts of signals which appeared between a) 5.2 ~ 6.3 ppm, b) 7.0 ~ 8.4 ppm

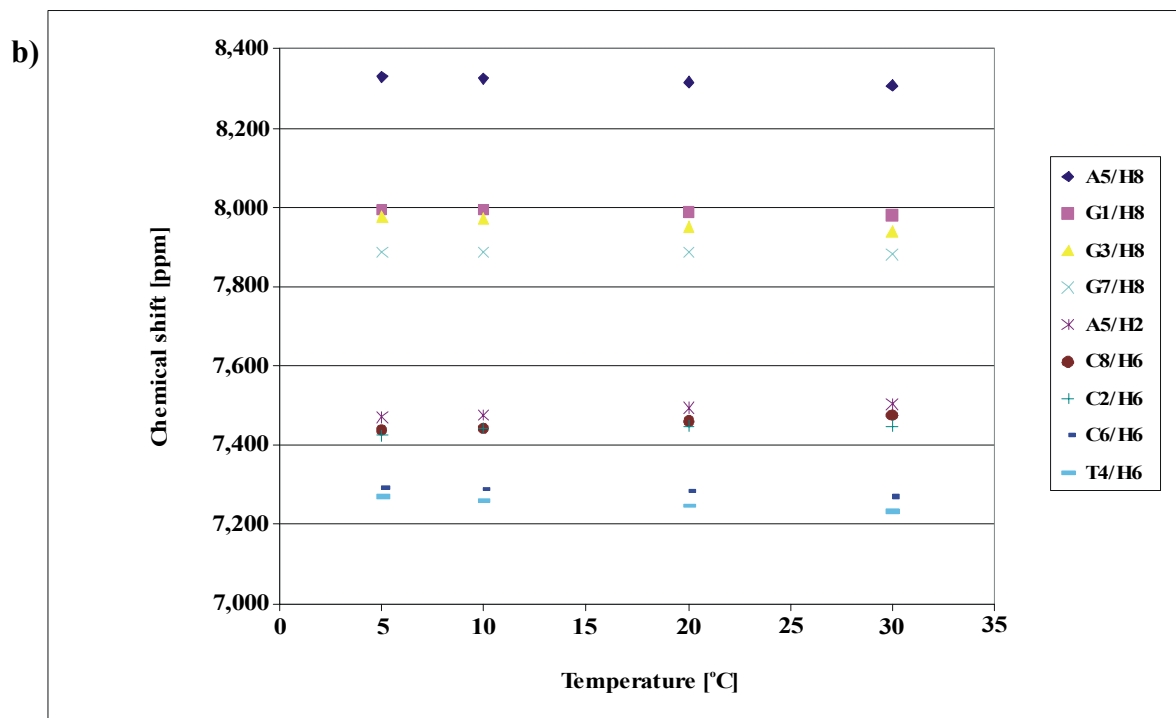
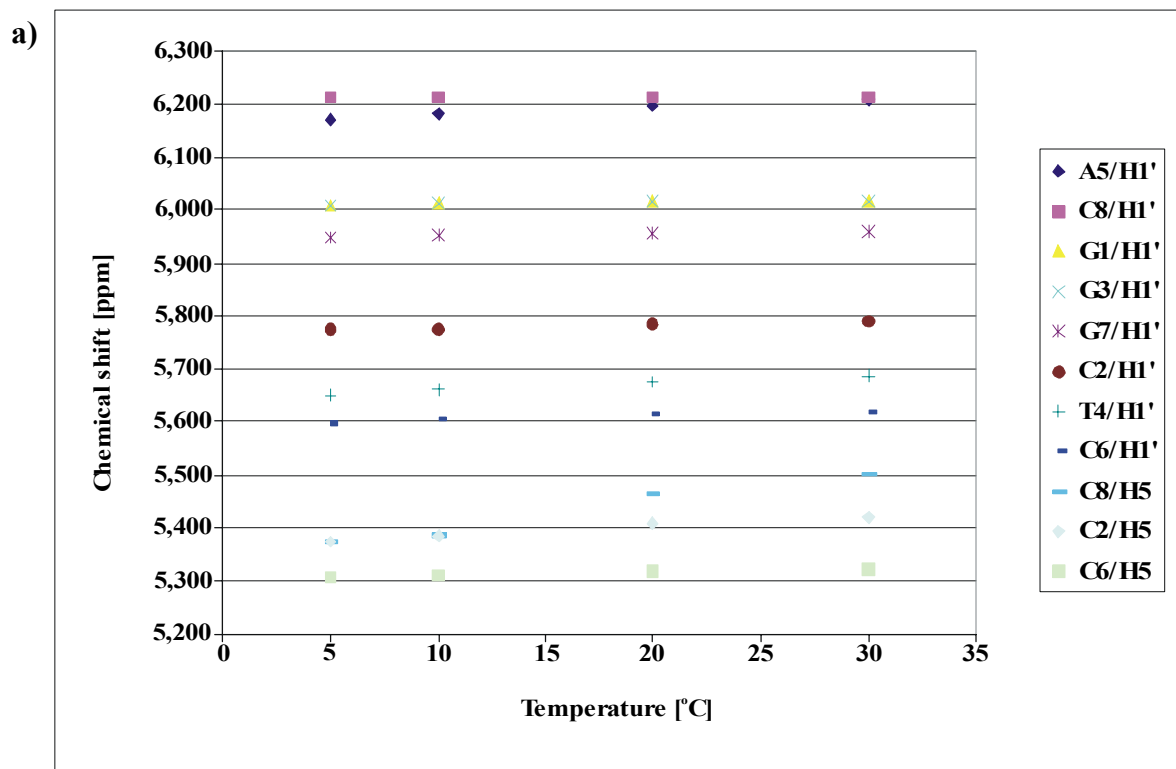


Fig. 3S Dilution curves for the d(GCGTACGC)₂ duplex with DMSO-*d*₆

