

Supplementary Material (ESI) for New Journal of Chemistry
This journal is (c) The Royal Society of Chemistry and
The Centre National de la Recherche Scientifique, 2007

Synthesis and Properties of Directly Linked Corrole-Ferrocene Systems
Daniel T. Gryko,^{*a} Joanna Piechowska,^a Jan S. Jaworski,^b Michał Gałęzowski,^a Mariusz
Tasior,^a Marek Cembor,^b Holger Butenschön^{*c}

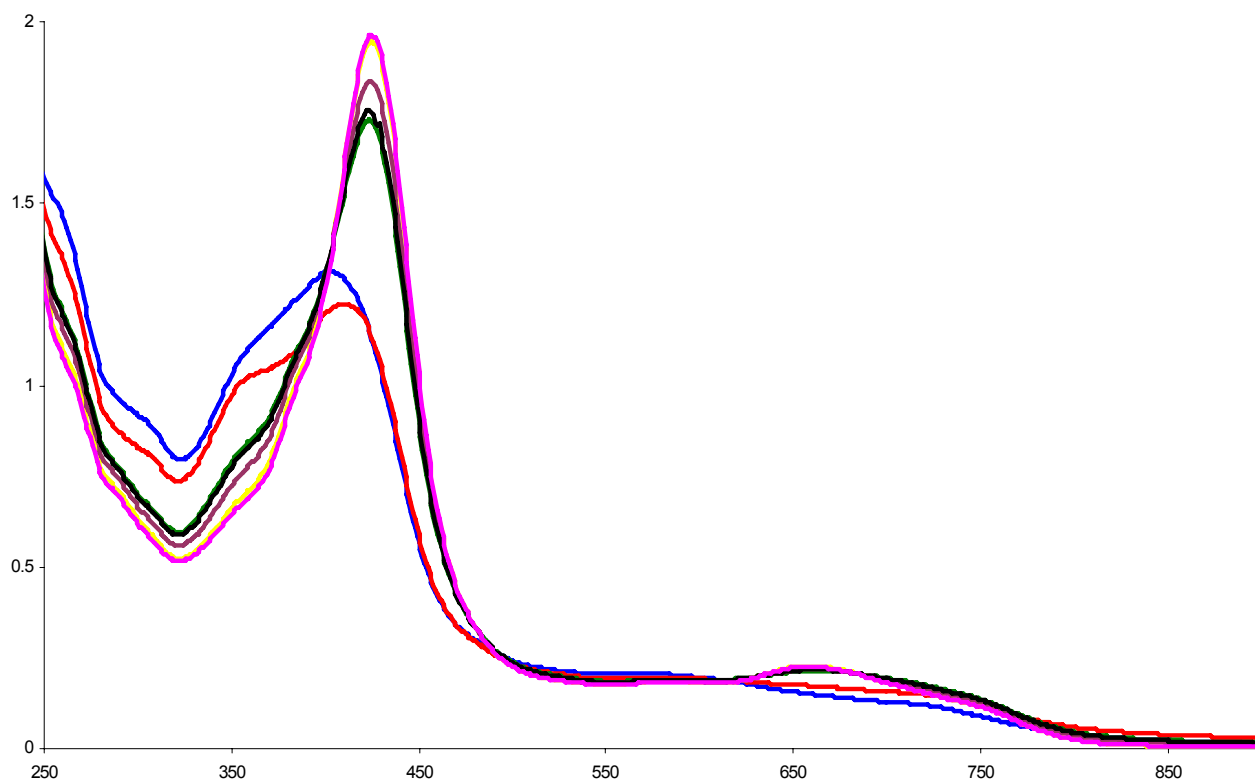


Fig S1. Absorption of partly purified *trans*-A₂B-corrole prepared from ferrocenecarboxaldehyde (**2**) and 5-(4-methylphenyl)dipyrromethane as a function of time in the presence of ambient light (pink – 0 h, yellow – 0.2 h, violet – 1.2 h, black – 3.0 h, green – 4.2 h, blue – 18 h, red – 19 h).