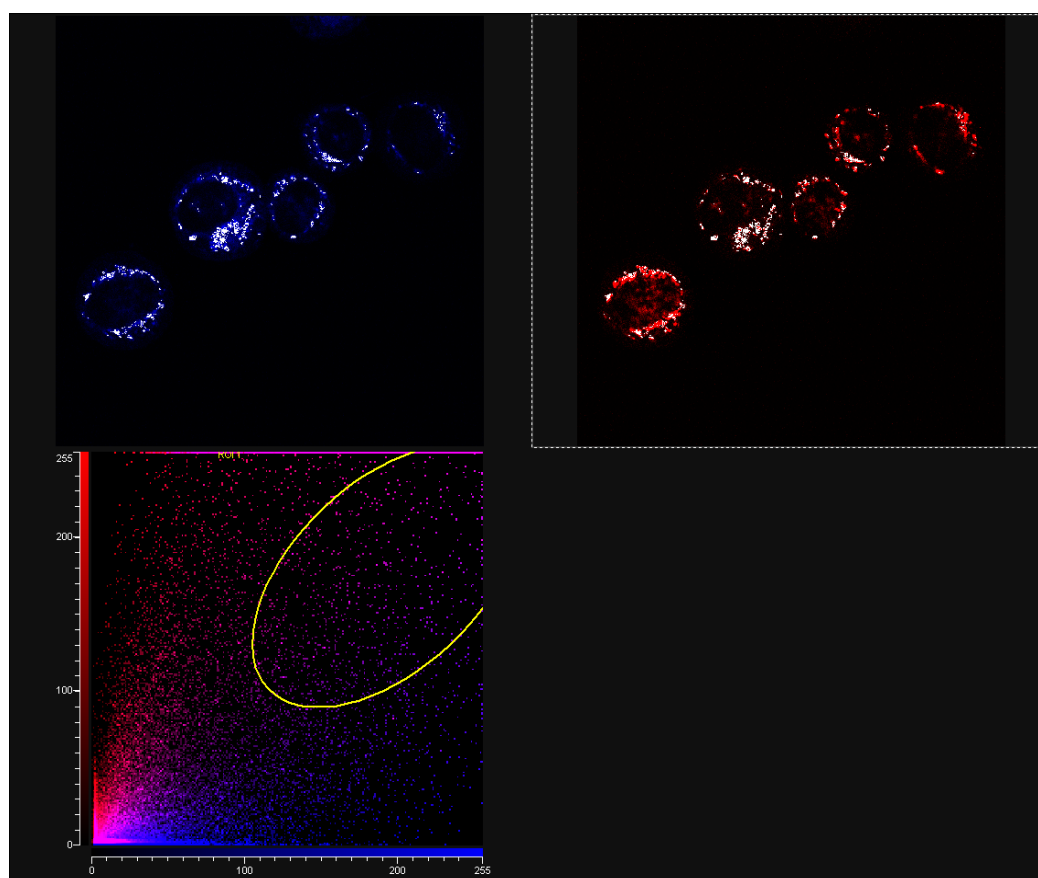


## Chloromethylpyridyl bipyridine *fac*-tricarbonyl rhenium: a thiol-reactive luminophore for fluorescence microscopy accumulates in mitochondria

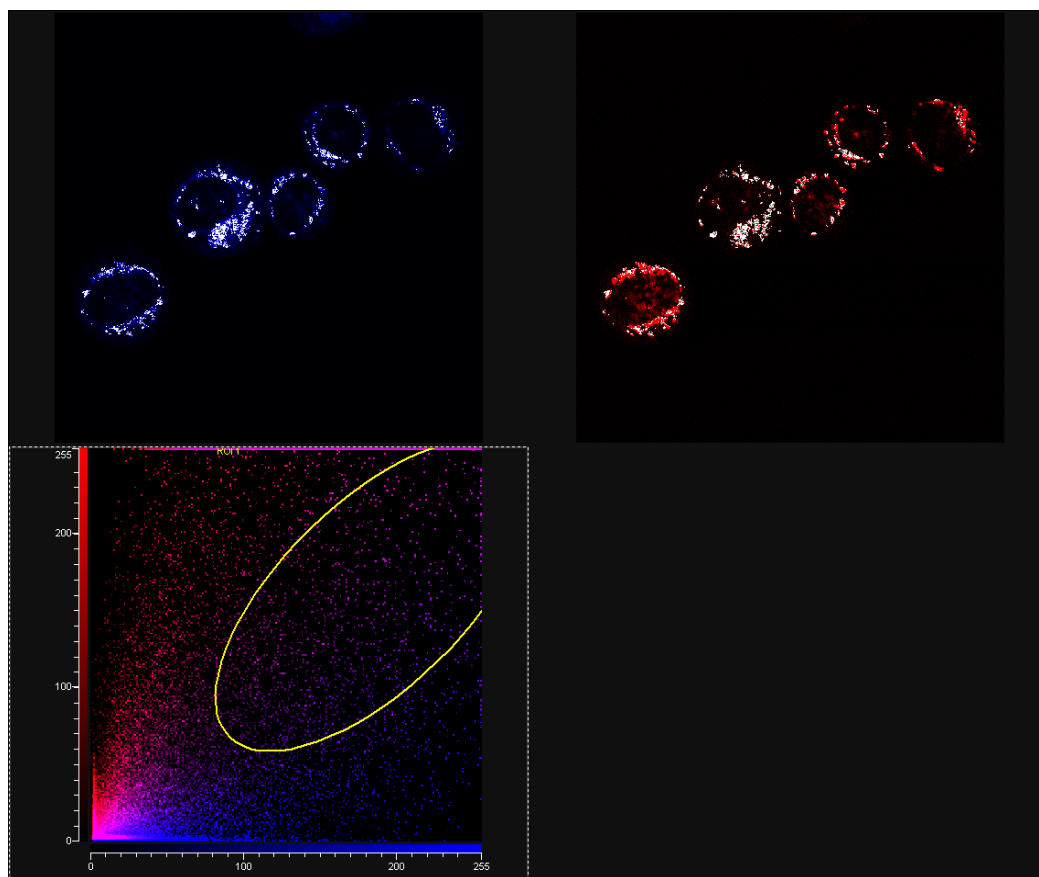
Angelo J. Amoroso, Richard J. Arthur, Michael P. Coogan,<sup>\*</sup> Jonathan B. Court, Vanesa Fernández-Moreira, Anthony J. Hayes, David Lloyd, Coralie Millet and Simon J. A. Pope

### Supplementary material

In the following diagrams scatter plots are used to illustrate co-localisation. Thus, an area is selected in the region of the scatter plot which relates to high intensity of each lumophore and the pixels which fall in this area are shown in white in the associated diagrams. The white pixels in the cell images occurring in the mitochondrial region show that both lumophores are located within a single pixellated area.



Supplementary Figure S1: Scatter plot showing co-localisation (arbitrary area selection)



Supplementary Figure S2: Scatter plot showing co-localisation (arbitrary area selection)