

Supplementary Material

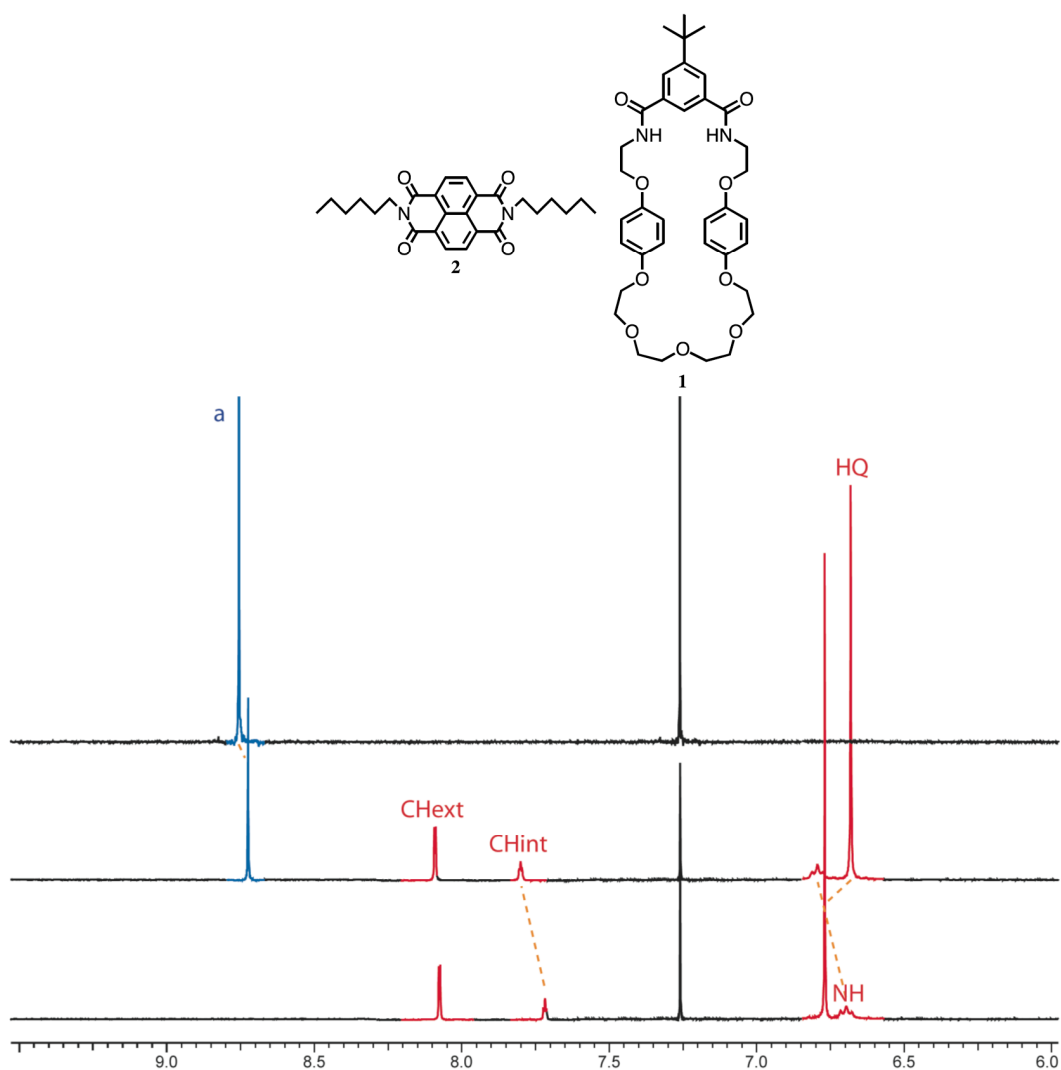


Figure S1: - ¹H NMR binding study in CDCl₃ (top spectrum is of diimide **2**, the middle spectrum is a 1:1 mixture of **2** and **1**, and the bottom spectrum is of macrocycle **1**).

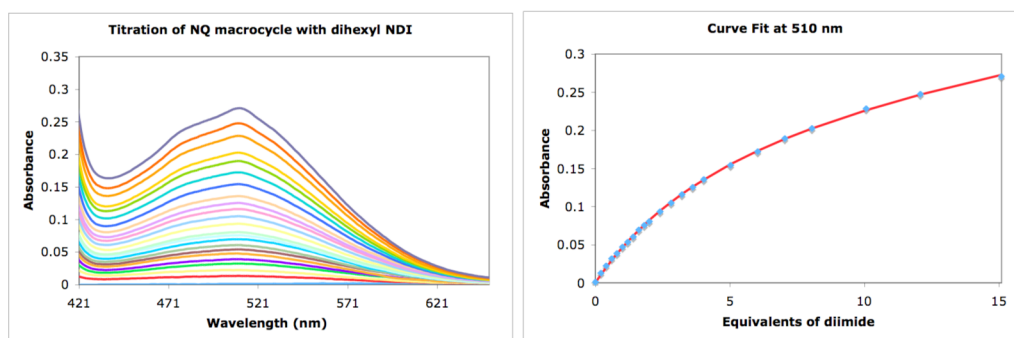


Figure S2: - UV titration of macrocycle **8** with a solution of naphthalene diimide **2** in CHCl₃.

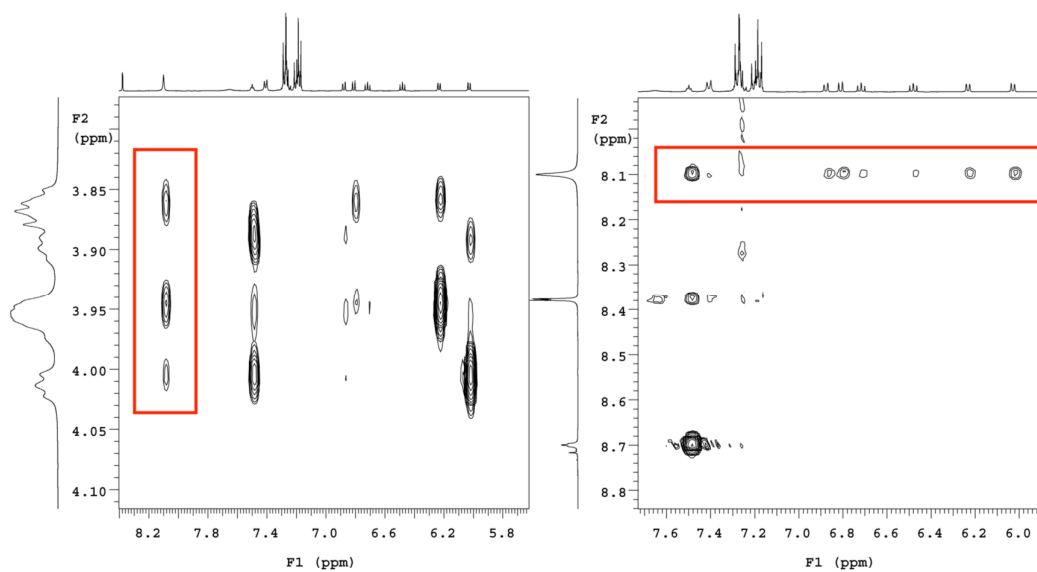


Figure S3:- ROESY spectrum of diimide rotaxane **11** in CD₂Cl₂. Left spectrum highlights the diimide ROESY interactions with the ethoxy protons in the macrocycle. The right spectrum clearly shows ROESY interactions from the diimide proton to all of the naphthohydroquinone protons in the macrocycle and the NH protons in the macrocycle.