

Supplementary Information

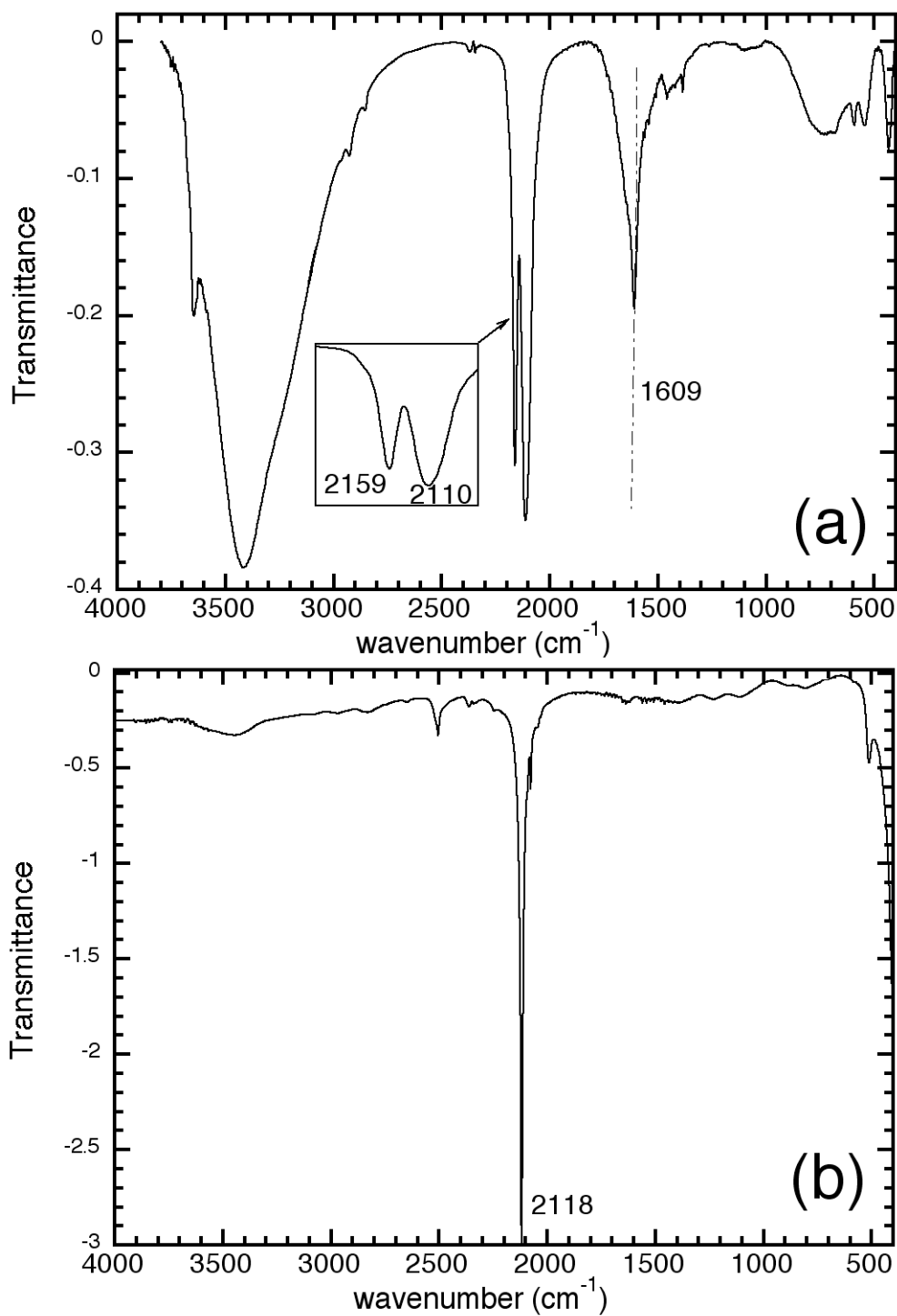


Fig. SI.1 FT-IR spectrum of (a) the bulk sample of $\text{Co}_3[\text{Fe}(\text{CN})_6]_2$, and (b) the initial reagent $\text{K}_3\text{Fe}(\text{CN})_6$.

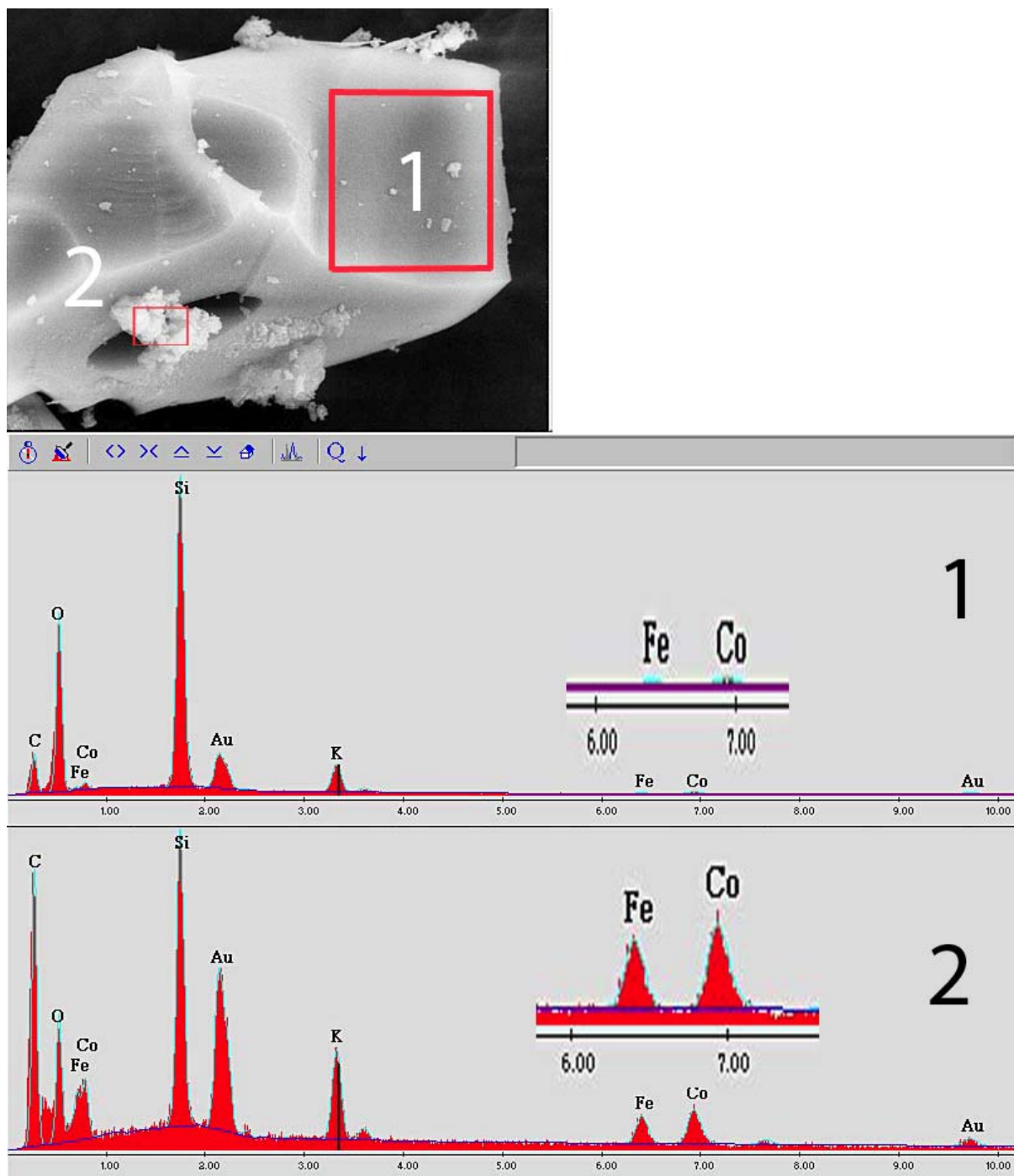


Figure SI 2: EDAX Analysis of the Sample B: zone 1: the silica matrix does not contain any significant amount of Fe or Co atoms; zone 2: zoom on the crystals that exhibit a high concentration in Fe and Co atoms.

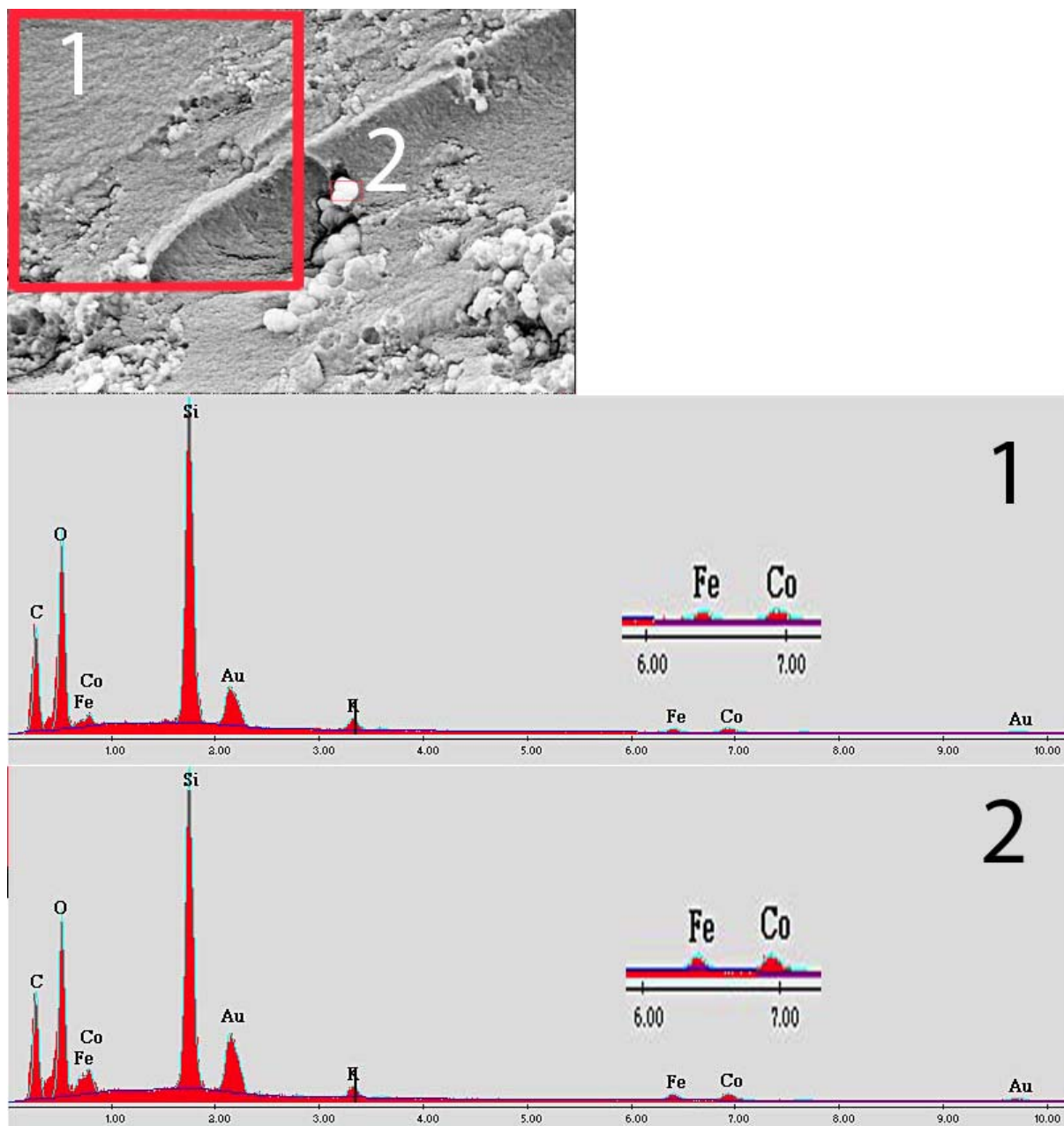


Figure SI 3: EDAX Analysis of the Sample C: zone 1: unlike sample B, the silica matrix contains both iron and cobalt atoms; zone 2: a zoom on the particles that are included within the previous matrix reveals that the total amount of Fe and Co is only slightly higher than in the rest of the sample, which indicates that they are not PB crystals.

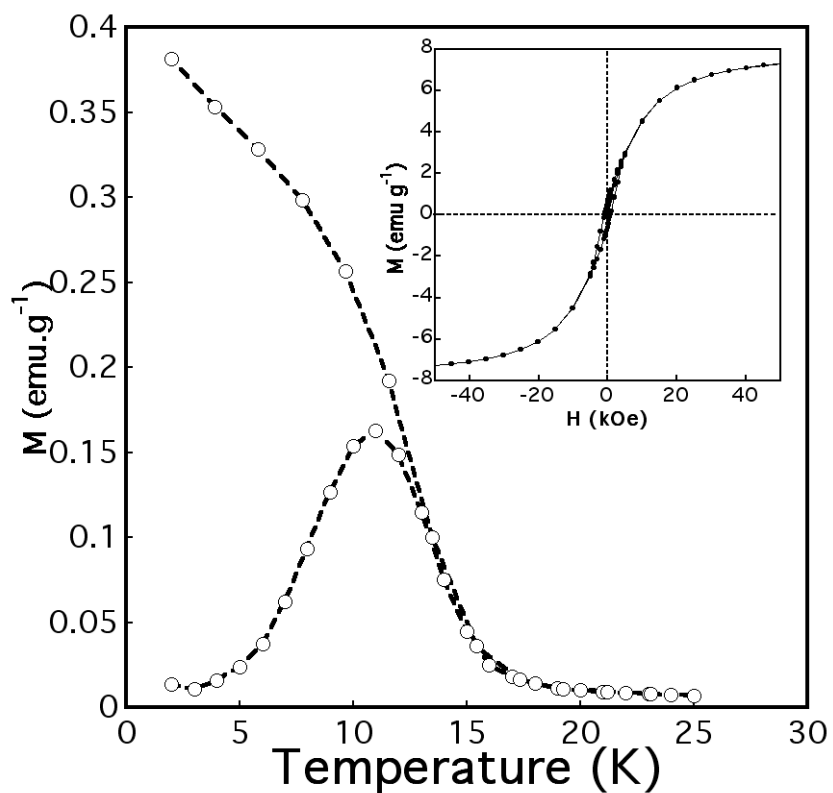


Fig. SI.4. Field-cooled and zero field-cooled magnetisation (FC/ZFC) versus temperature curves performed with an applied field of 10 Oe for the sample B. Inset: Field dependence of the magnetisation for the sample B performed at 2 K