

# Ag<sup>+</sup>-selective “off-on” probe based on naphthalimide derivative

Jun Zhang\*, Chunwei Yu, Gang Lu, Qiongyao Fu, Na Li and Yuxiang Ji

School of Tropical and Laboratory Medicine, Hainan Medical University, Haikou  
571101, China

\*Corresponding author: Tel.: +86 898 66973190; Fax: +86 898 66989173.

E-mail: jun\_zh1979@163.com

## 1. NMR spectra of compound L

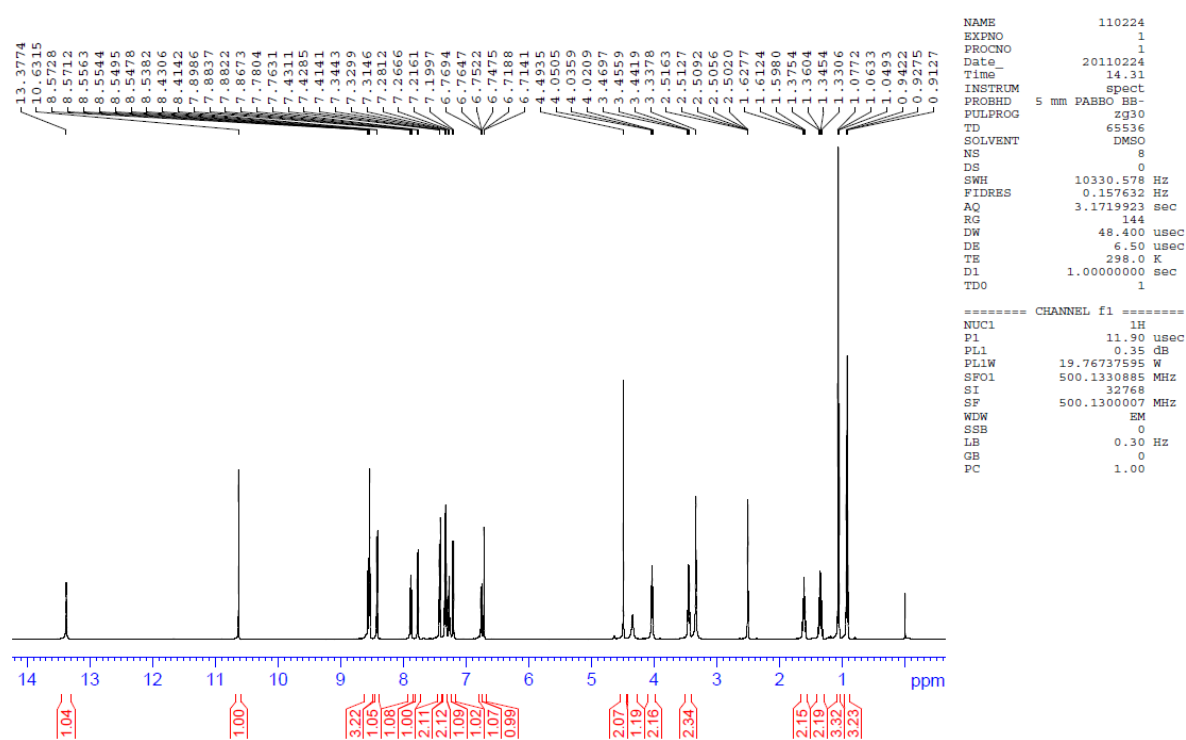
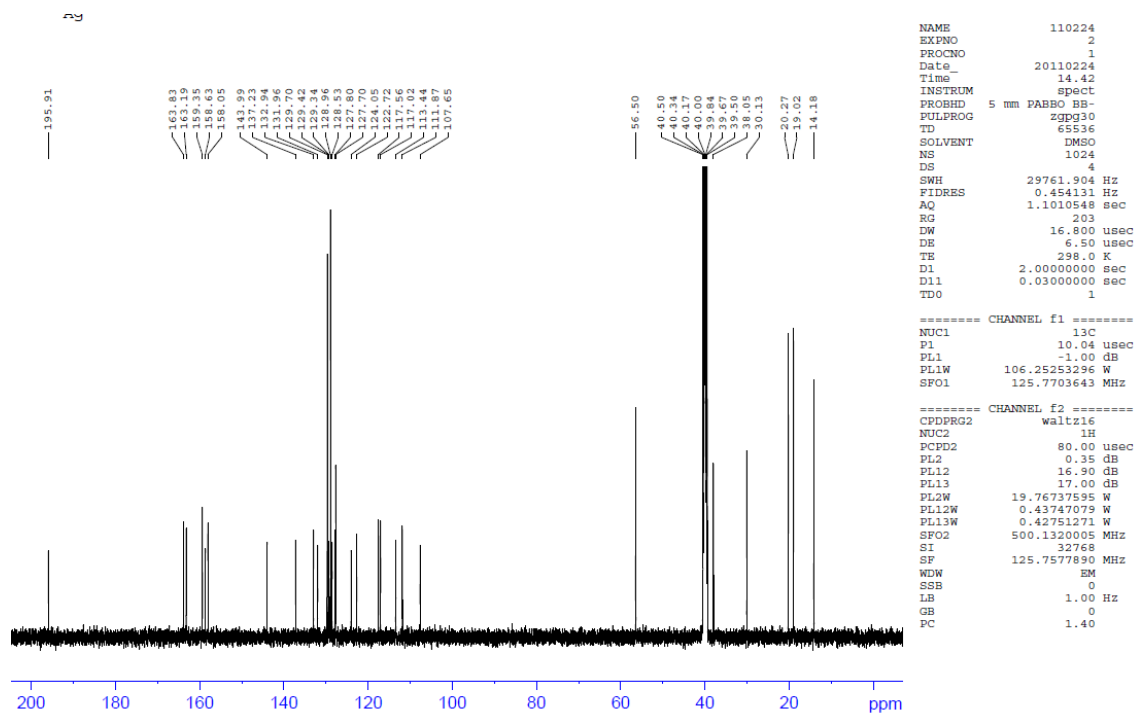
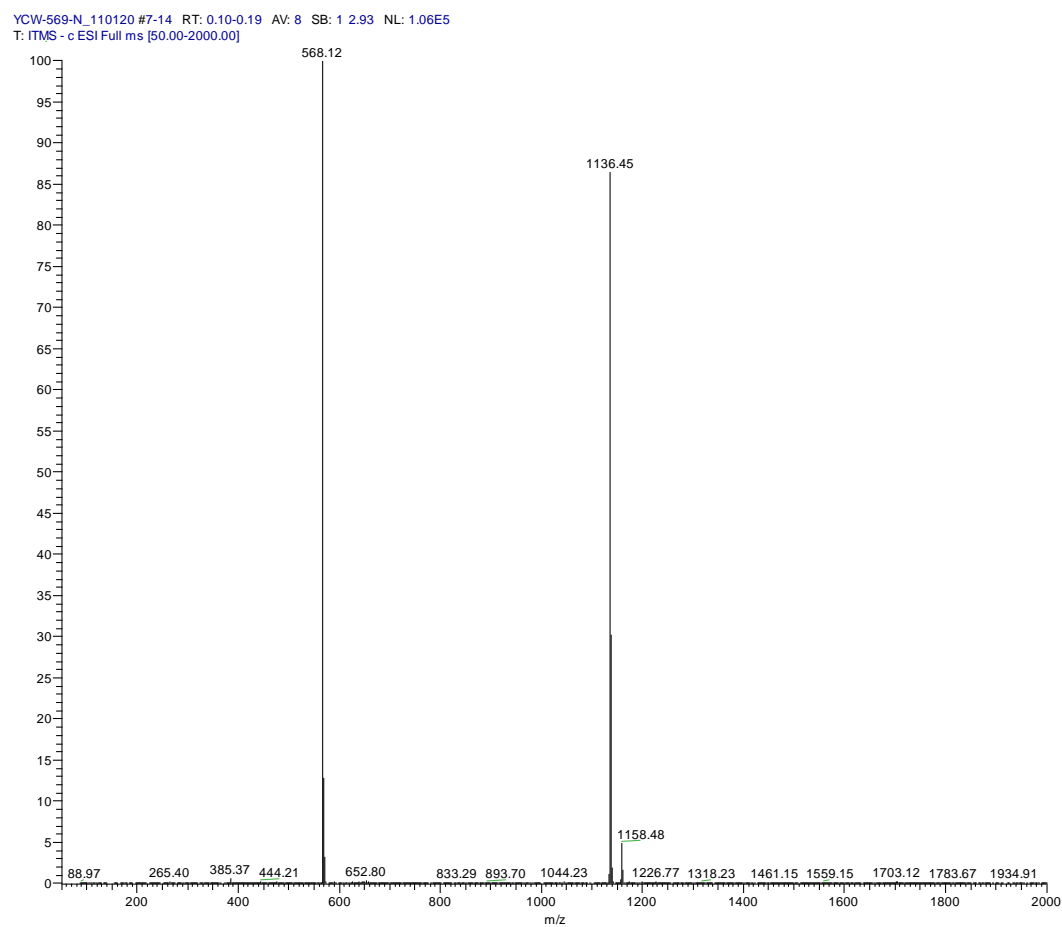


Fig. S1 <sup>1</sup>H NMR spectrum of compound L.

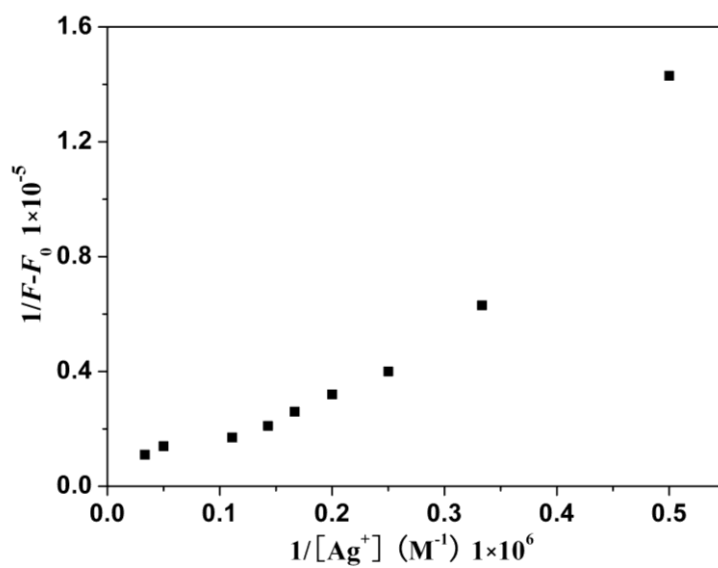


**Fig. S2** <sup>13</sup>C NMR spectrum of compound **L**.



**Fig. S3** ESI-MS mass spectra of compound **L**.

## 2. Supplementary spectral data



**Fig. S4** Benesi-Hildebrand plot of **L**, assuming 1:1 stoichiometry for **L**-  $Ag^+$ .