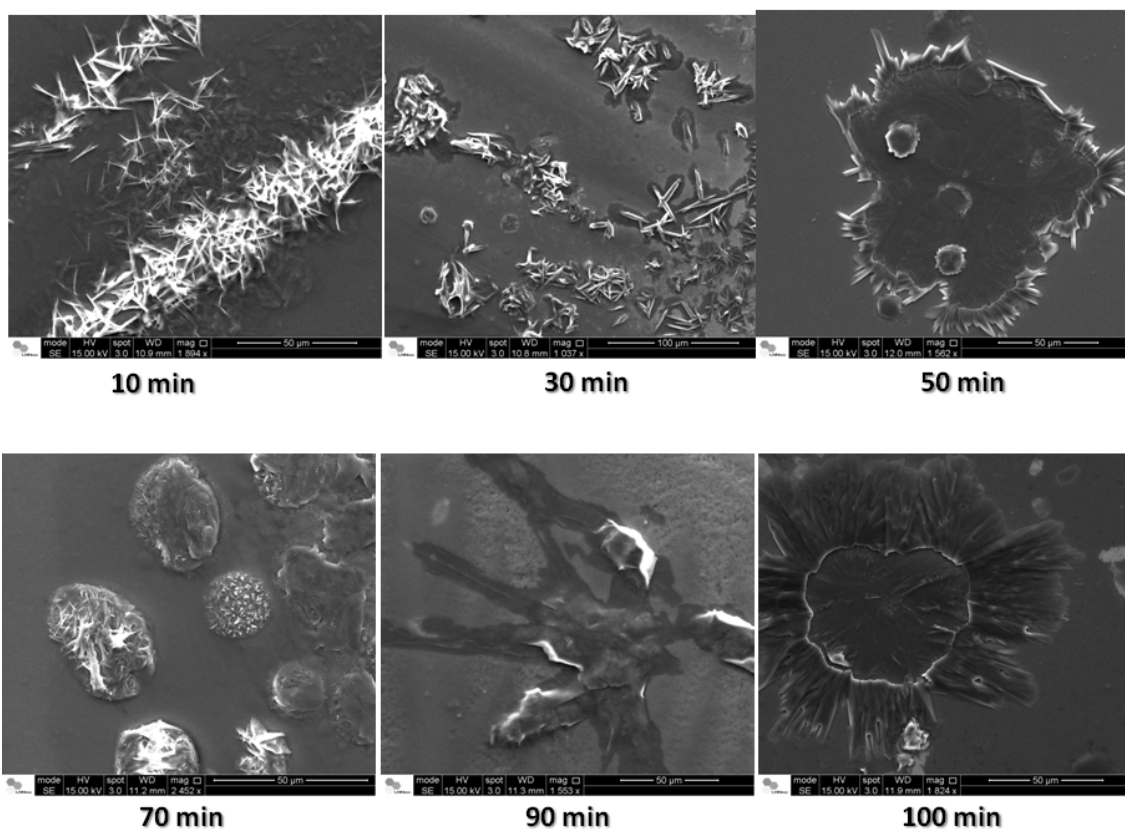


1 Supplementary Material

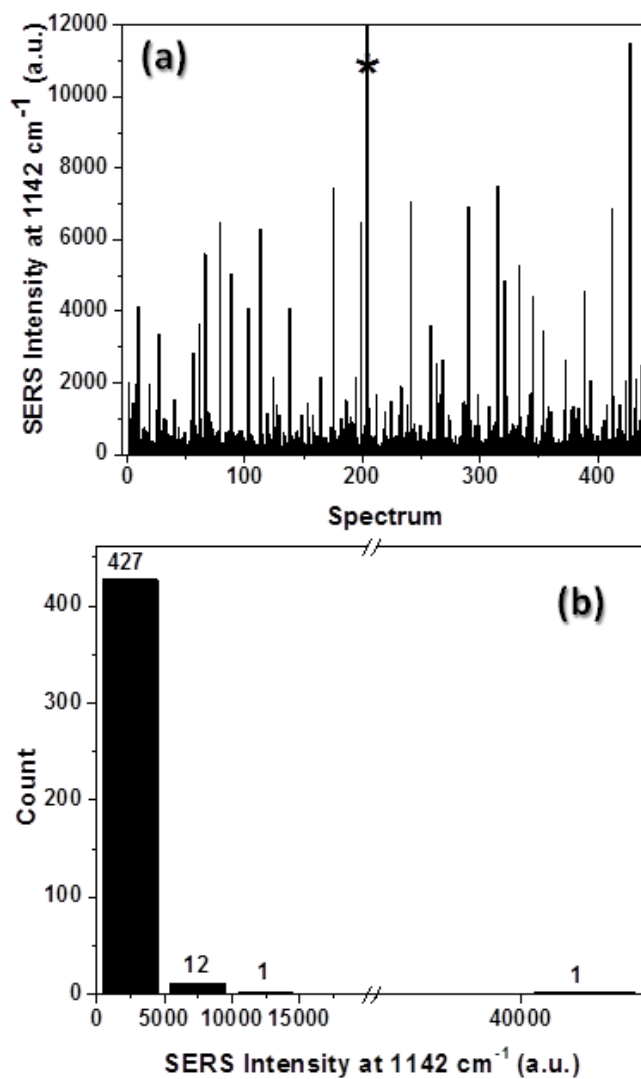
2



3

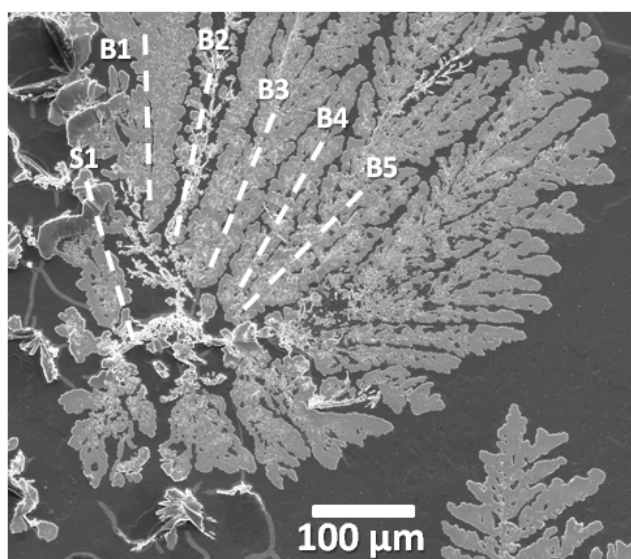
4 **Figure S1.** SEM images showing the evolution of the D-AgNP@Chit morphologies

5 during the synthesis.



7

8 **Figure S2.** (a) Spatial distribution of the SERS intensity at 1142 cm^{-1} of 4-ABT (10^{-6}
 9 mol L^{-1}) on the Film 3D. For best viewing the intensity scale was stopped at 12000 a.u.
 10 and the highest intensity is indicate using an asterisk (*). (b) Histogram of of the SERS
 11 intensity at 1142 cm^{-1} .



13

14 **Figure S3.** SEM image of D-AgNP@Chit structure for the Film 3D showing the points-
15 line scan analyzed by Raman spectroscopy.

16