

Electronic Supplementary Material (ESI) for New Journal of Chemistry

Supplementary material

Electrospun Poly(L-lactide) Nanofibers Loaded with Paclitaxel and Water-soluble Fullerenes for Drug Delivery and Bioimaging

Wanyun Liu, Junchao Wei, Yiwang Chen*

College of Chemistry/Institute of Polymers, Nanchang University, 999 Xuefu Avenue,
Nanchang 330031, China

*Corresponding author. Tel.: +86 791 83969562; fax: +86 791 83969561.

E-mail address: ywchen@ncu.edu.cn (Y. Chen).

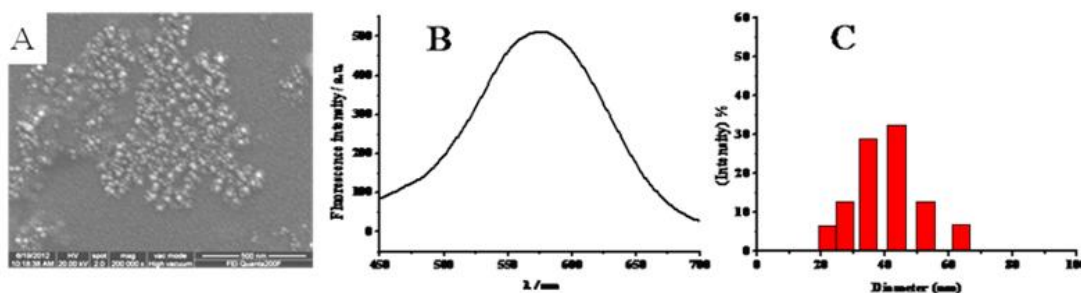


Fig. S1 The morphology, photoluminescence spectrum and size distribution of fullerene nanoparticles C₇₀-TEGs. (A) SEM image, (B) fluorescence emission spectrum and (C) size distribution.

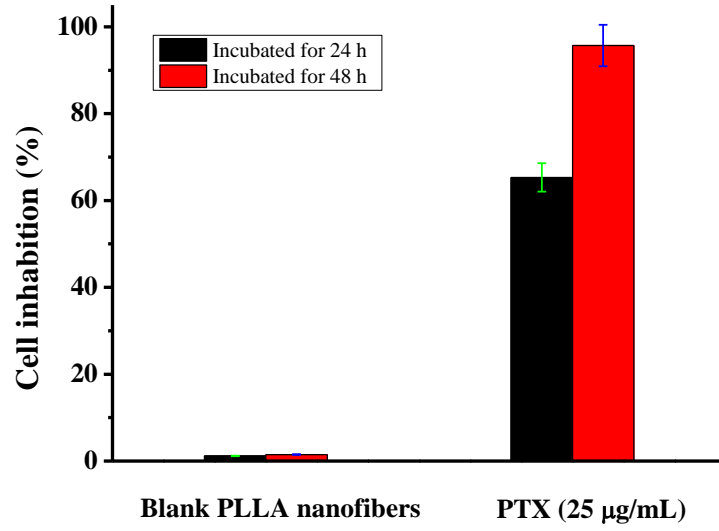


Fig. S2 Cytotoxicities of PTX and blank PLLA nanofibers to human liver carcinoma HepG-2 cells.

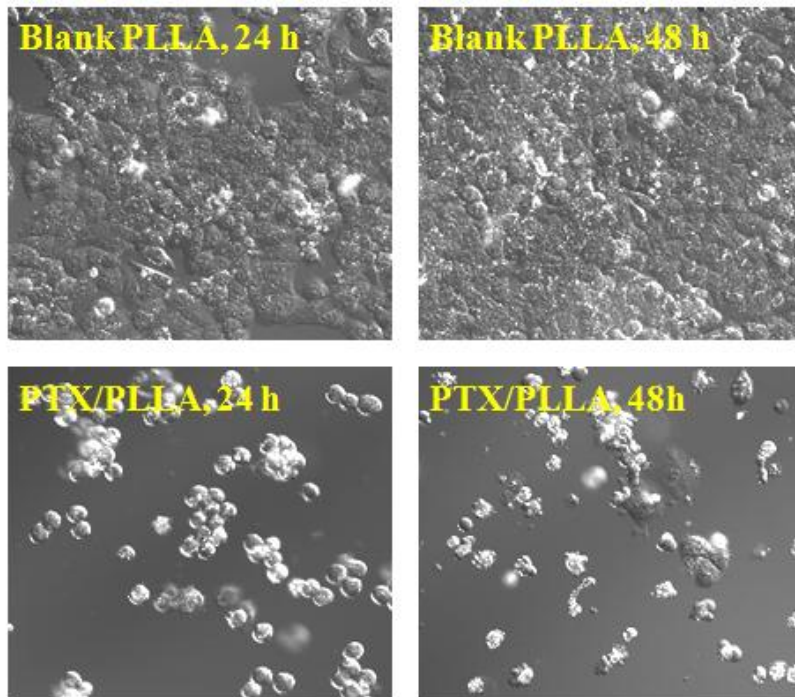


Fig. S3 LSCM images of HepG-2 cells co-cultured with electrospun nanofibers PLLA and PTX/PLLA at different time (bright field).