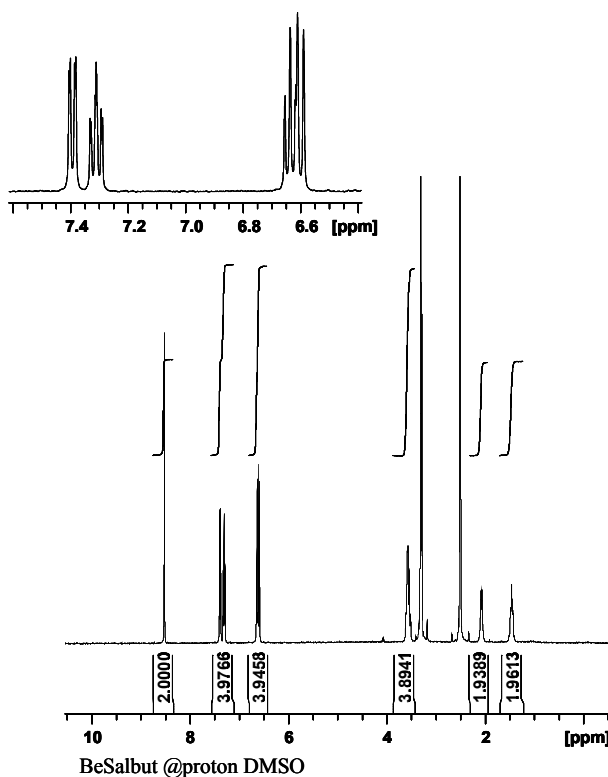


COMMUNICATION

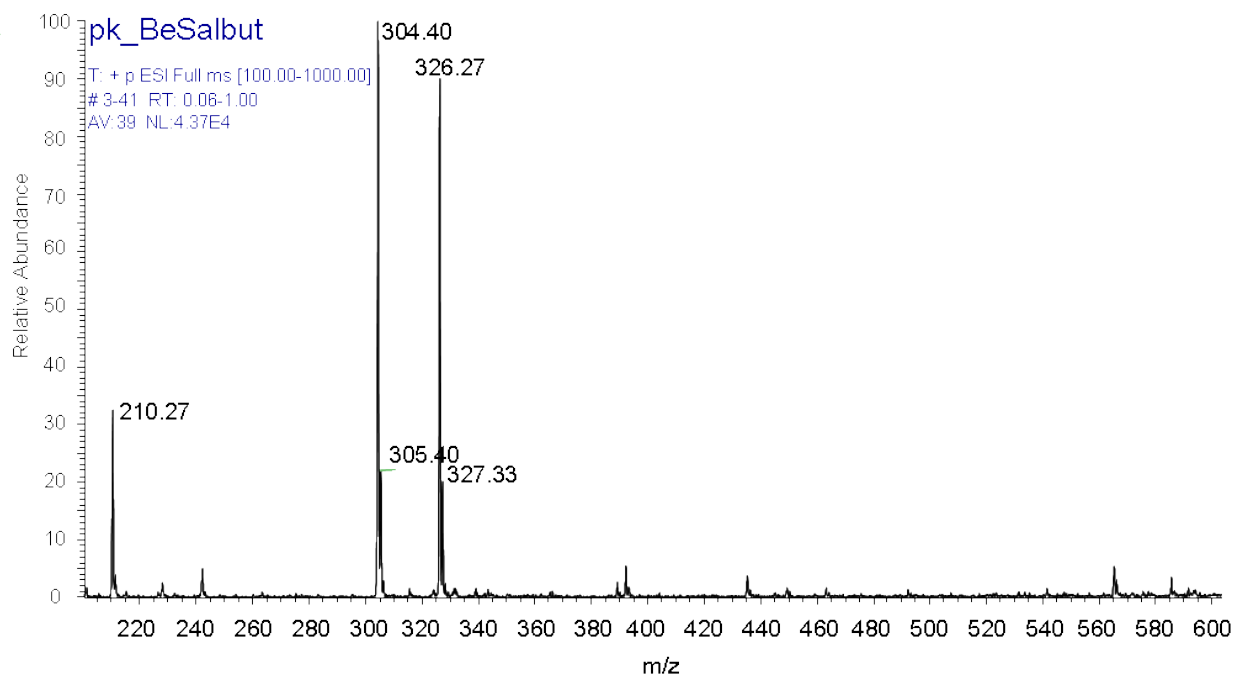
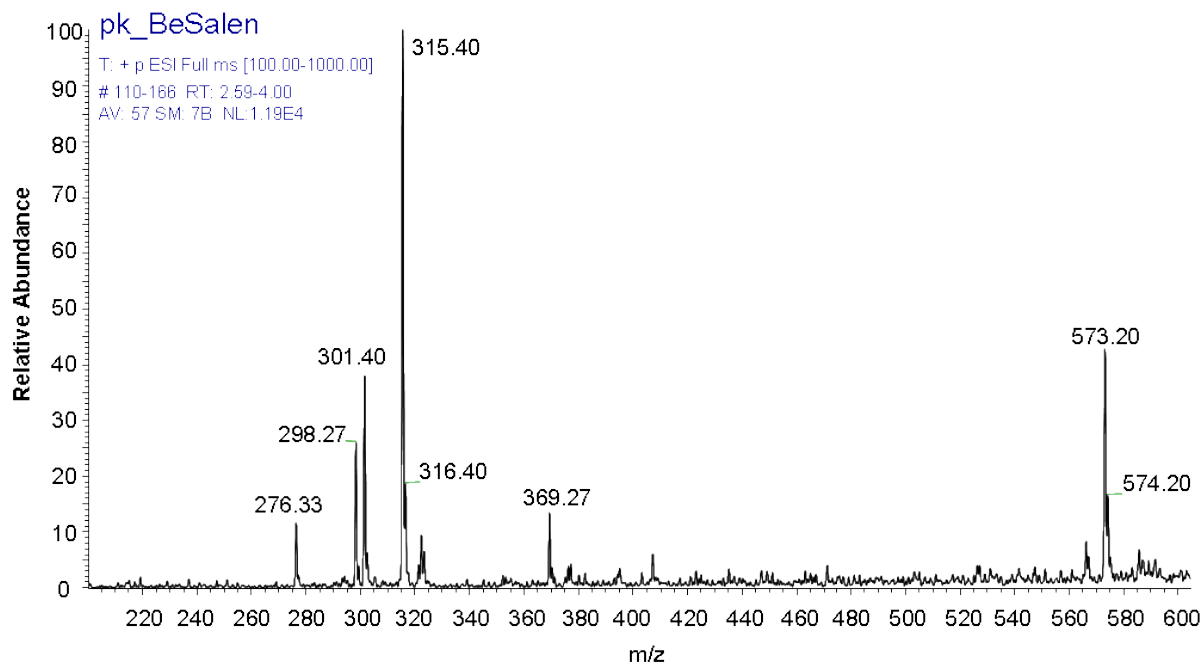
Tetradentate Schiff base Beryllium complexes.

Supporting information.

John Reglinski, Alan R. Kennedy and Graham Steel
Department of Pure and Applied Chemistry,
WestChem University of Strathclyde, Glasgow G1 1XL, UK.
Email: j.reglinski@strath.ac.uk



¹H NMR spectrum (400 MHz, DMSO) of BeSalbut



ES MS of BeSalen and BeSalbut