

Supporting Information

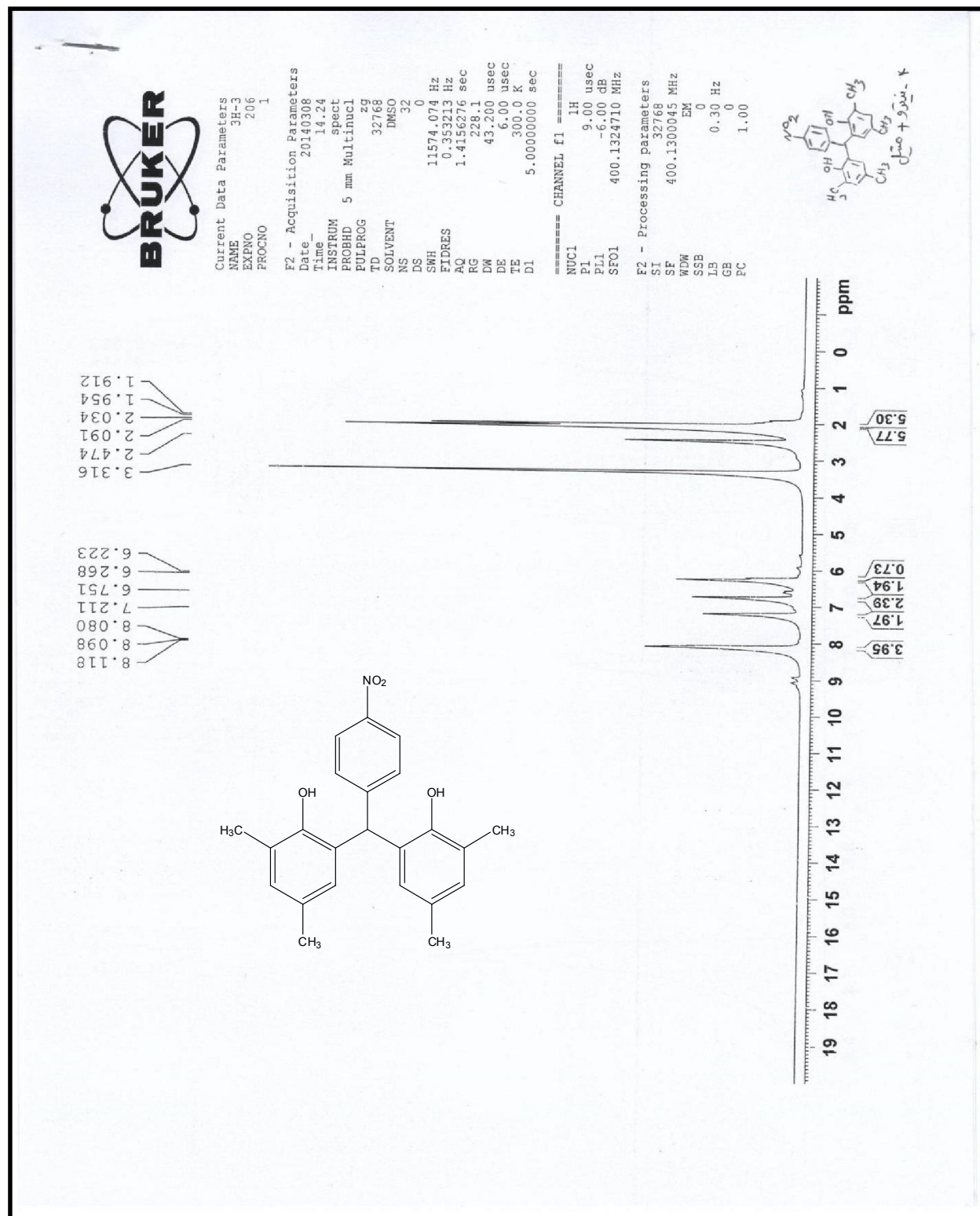
Microwave-assisted synthesis of 6,6'-(aryl(alkyl)methylene)bis(2,4-dialkylphenol) antioxidants catalyzed by multi sulfonated reduced graphene oxide nanosheets in water

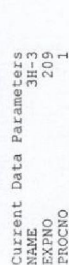
Hossein Naeimi*, Mohsen Golestanzadeh

Department of Organic Chemistry, Faculty of Chemistry, University of Kashan, Kashan,
8731751167, I. R. Iran

E-mail: naeimi@kashanu.ac.ir

¹H NMR Spectra of prepared compounds.



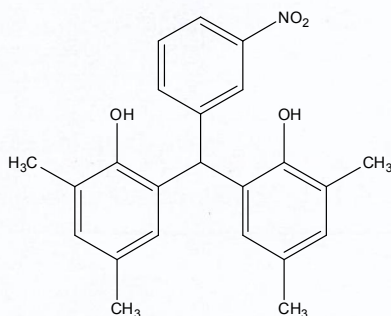
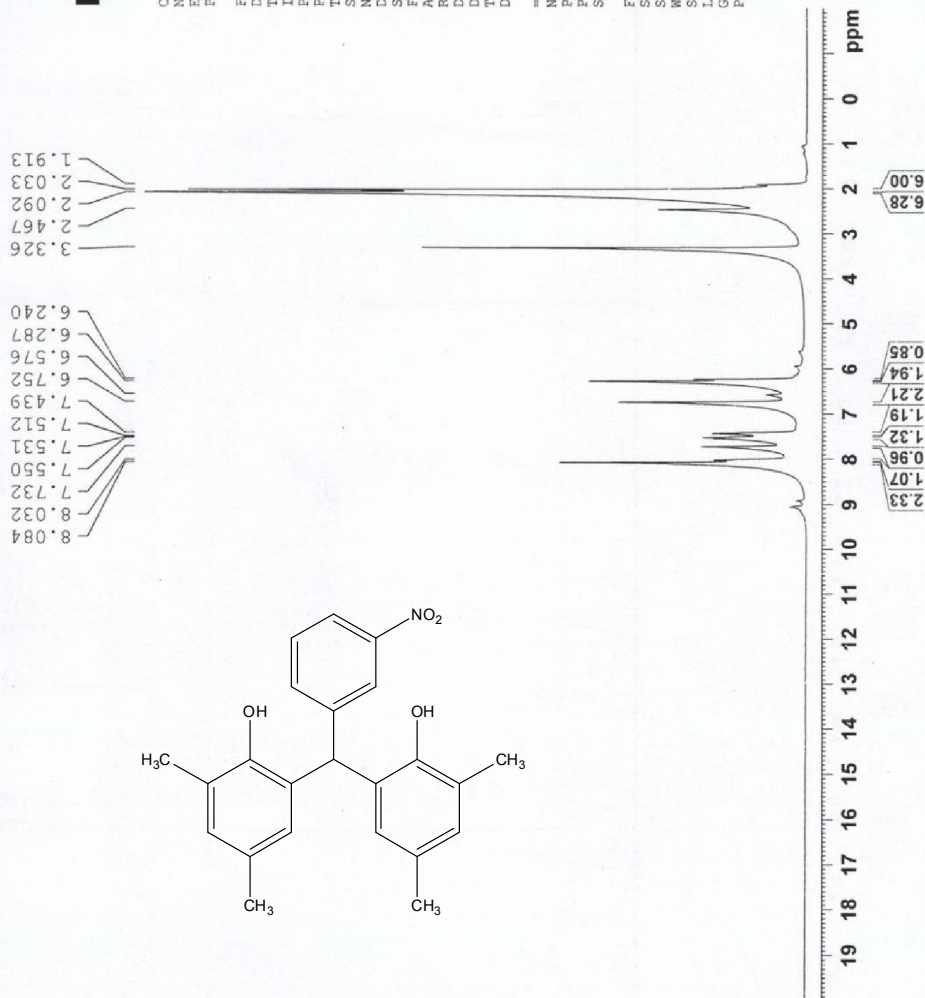
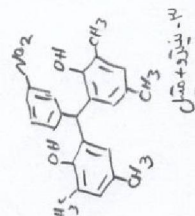


F2 - Acquisition Parameters

Date	20140308
Time	15.02
INSTRUM	spect
PROBHD	5 mm Multinuc1
PULPROG	zg
TD	32768
DELTD	16
SOLVENT	DMSO
NS	16
DSH	11574.074 Hz
WDW	0.35713 Hz
FIDRES	0.35713 Hz
RG	1.4158276 sec
SG	101.6 sec
DE	43.200 usec
TE	6.00 usec
DE	300.0 K
OT	5.00000000 sec
01	

```
===== CHANNEL f1 =====
NUC1      1H
P1        9.00 usec
PL1       -6.00 dB
SF01      400.1324710 MHz
```

F2 - Processing parameters	
SI	32768
SF	400.1300045 MHz
WDW	EM
SSB	0
LB	0.30 Hz
GB	0
PC	1.00



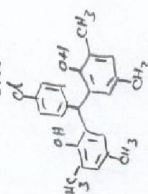


Current Data Parameters
NAME 3H-3
EXPNO 234
PROCNO 1

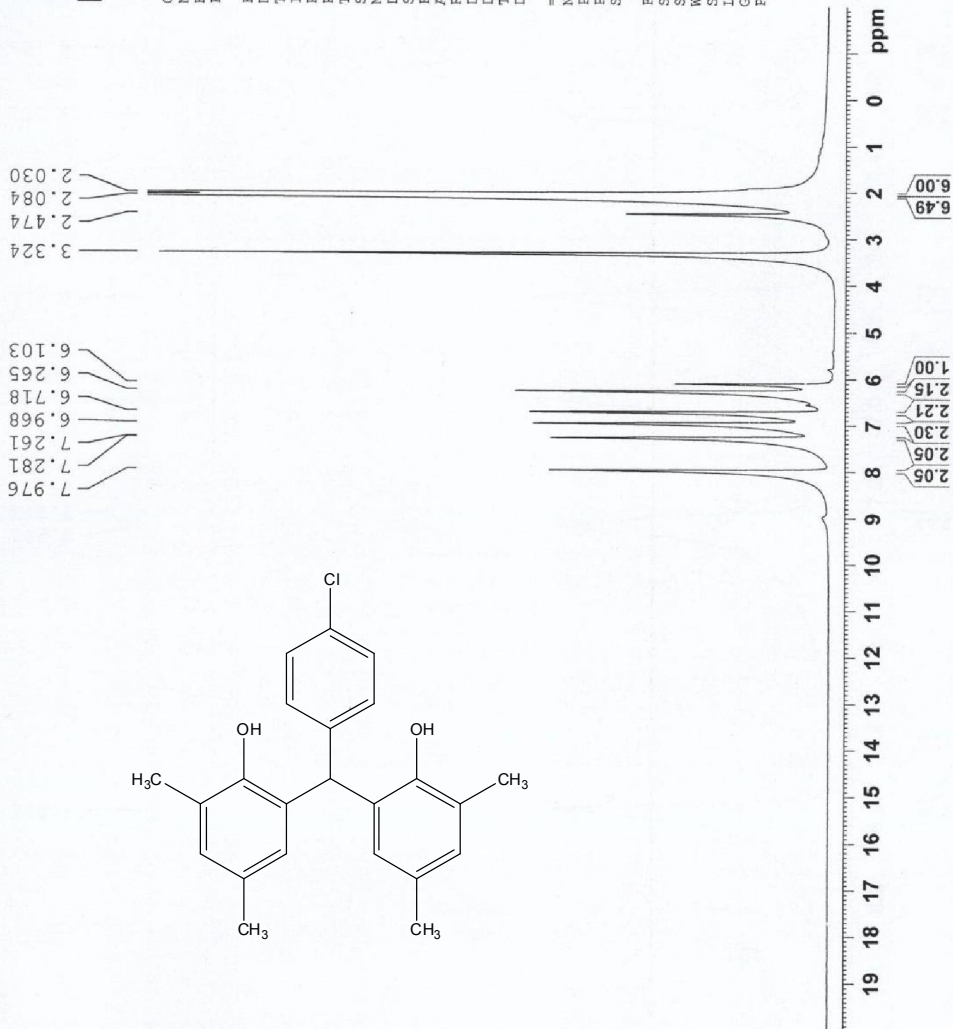
F2 - Acquisition Parameters
Date_ 20140312
Time 8.16
INSTRUM spect
PROBHD 5 mm Multinucl
PULPROG zg
TD 32768
SOLVENT DMSO
NS 32
DS 0
SWH 11574.074 Hz
FIDRES 0.353213 Hz
AQ 1.4156276 sec
RG 161.3
DW 43.200 usec
DE 6.00 usec
TE 300.0 K
D1 5.00000000 sec

===== CHANNEL f1 =====
NUC1 1H
P1 9.00 usec
PL1 -6.00 dB
SFO1 400.1324710 MHz

F2 - Processing parameters
SI 32768
SF 400.1300045 MHz
WDW EM
SSB 0
LB 0.30 Hz
GB 0
PC 1.00



$\delta_{TMS} + 9.55 - 14$





Current Data Parameters
NAME 3H-3
EXPNO 171
PROCNO 1

F2 - Acquisition Parameters

Date_ 20140304
Time_ 8.37
INSTRUM spect
PROBHD 5 mm Multinucl
PULPROG zg
TD 32768
SOLVENT DMSO
NS 32
DS 0
SWH 11574.074 Hz
FIDRES 0.353213 Hz
AQ 1.4156276 sec
RG 64
DM 43.200 usec
DE 6.00 usec
TE 300.0 K
D1 5.00000000 sec

===== CHANNEL f1 =====
NUC1 1H
P1 9.00 usec
PL1 -6.00 dB
SFO1 400.1324710 MHz

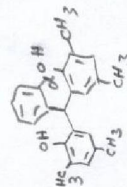
F2 - Processing parameters

SI 32768
SF 400.1300045 MHz
WDW EM
SSB 0
LB 0.30 Hz
GB 0
PC 1.00

7.964
7.359
7.181
6.835
6.719
6.403
6.195
3.337
2.473
2.086
2.018
1.968
1.936
1.913

1.90
1.28
2.29
1.15
1.94
1.15
2.23
6.18
5.02

ppm



3-متیل-4-هیدروکسی-تولین



Current Data Parameters
NAME 3H-3
EXPNO 241
PROCNO 1

F2 - Acquisition Parameters

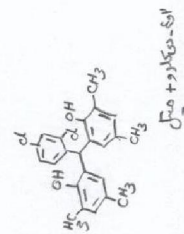
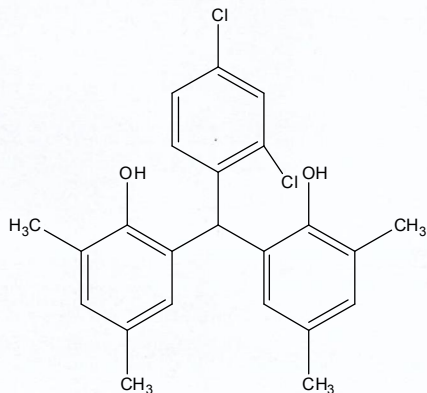
Date_ 20140315
Time_ 8:57
INSTRUM spect
PROBHD 5 mm Multinucl
PULPROG zg
TD 32768
SOLVENT DMSO
NS 32
DS
SWH 11574.074 Hz
FIDRES 0.353213 Hz
AQ 1.4156276 sec
RG 161.3
DW 43.200 usec
DE 6.00 usec
TE 300.0 K
D1 5.00000000 sec

CHANNEL f1
NUC1 ¹H
P1 9.00 usec
PL1 -6.00 dB
SFO1 400.1324710 MHz

F2 - Processing parameters

SI 32768
SF 400.1300045 MHz
WDW EM
SSB 0
LB 0.30 Hz
GB 0
PC 1.00

8.012
8.005
7.502
7.299
6.807
6.786
6.736
6.330
6.177
3.334
3.326
2.478
2.082
2.034
2.027
1.926



ppm

1.24
1.07
1.36
1.92
2.01
1.23
2.13
6.34
6.00



Current Data Parameters
NAME 3H-3
EXPNO 185
PROCNO 1

F2 - Acquisition Parameters
Date_ 20140305
Time_ 8.09

INSTRUM spect
PROBHD 5 mm Multinucl

PULPROG zg
TD 32768
SOLVENT DMSO

NS 32
DS 0

SWH 11574.074 Hz
FIDRES 0.363213 Hz

AQ 1.4156276 sec
RG 71.8

DW 43.200 usec
DE 6.00 usec

TE 300.0 K
D1 5.00000000 sec

CHANNEL f1
NUC1 1H
P1 9.00 usec
PL1 -6.00 dB

SFO1 400.1324710 MHz

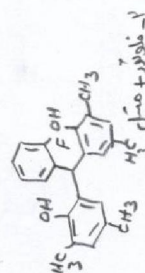
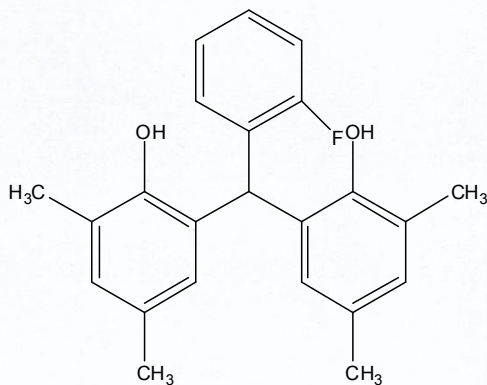
F2 - Processing parameters
SI 32768
SF 400.1300045 MHz

WDW EM
SSB 0
LB 0.30 Hz

GB 0
PC 1.00

7.984
7.202
7.064
6.779
6.728
6.350
6.263

3.347
2.477
2.095
2.027
1.951



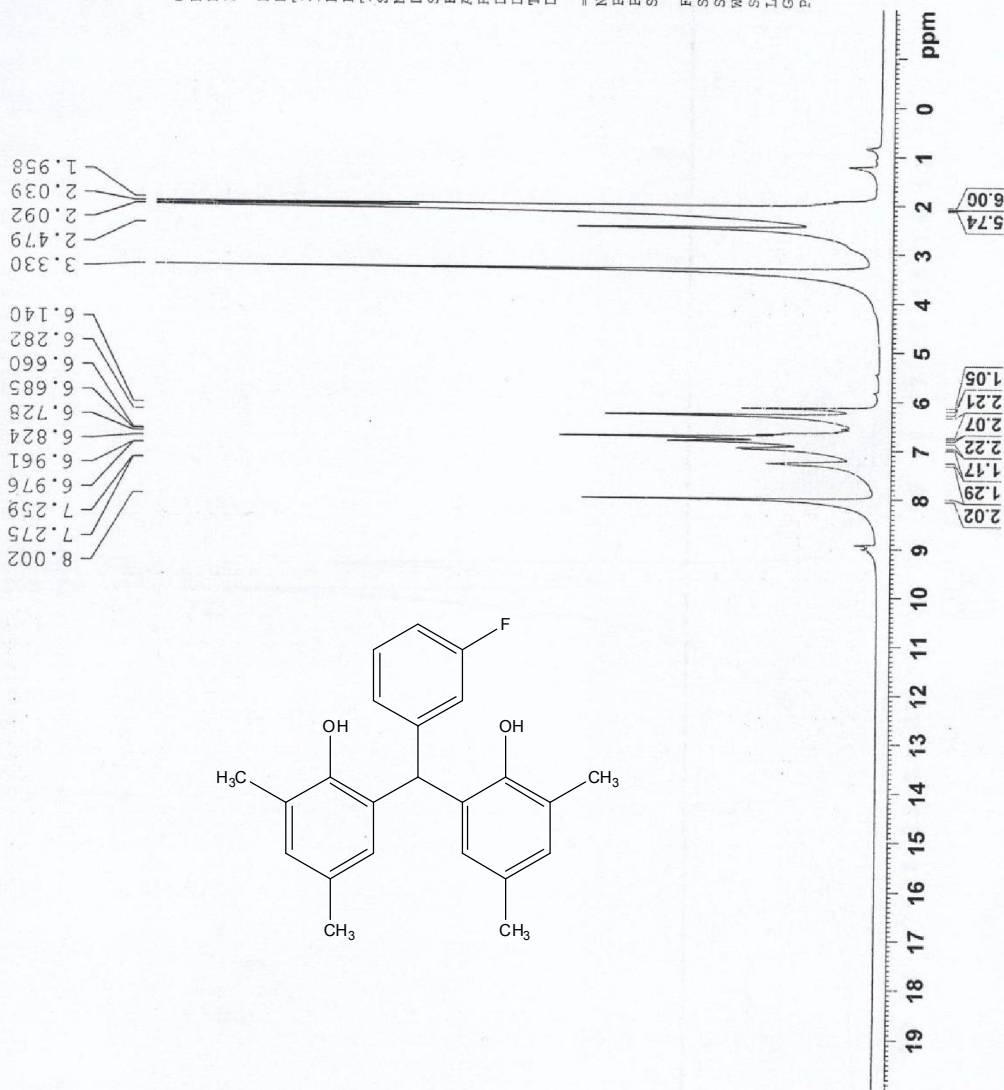


Current Data Parameters
NAME 3H-3
EXPNO 205
PROCNO 1

F2 - Acquisition Parameters
Date_ 20140308
Time_ 14.15
INSTRUM spect
PROBHD 5 mm Multinucl
PULPROG zg
TD 32768
SOLVENT DMSO
NS 32
DS 0
SWH 11574.074 Hz
FIDRES 0.353213 Hz
AQ 1.4156276 sec
RG 161.3
DM 43.200 usec
DE 6.00 usec
TE 300.0 K
D1 5.00000000 sec

===== CHANNEL f1 =====
NUC1 1H
P1 9.00 usec
PL1 -6.00 dB
SFO1 400.1324710 MHz

F2 - Processing parameters
SI 32768
SF 400.1300045 MHz
WDW EM
SSB 0
LB 0.30 Hz
GB 0
PC 1.00





Current Data Parameters
NAME 3H-3
EXPNO 186
PROCNO 1

F2 - Acquisition Parameters
Date_ 20140305
Time_ 8.18
INSTRUM spect
PROBHD 5 mm Multinucl
PULPROG zgpg30
TD 32768
SOLVENT DMSO
NS 32
DS 0
SWH 11574.074 Hz
FIDRES 0.353213 Hz
AQ 1.4156276 sec
RG 114
DW 43.200 usec
DE 6.00 usec
TE 300.0 K
D1 5.00000000 sec

===== CHANNEL f1 =====
NUC1 1H
P1 9.00 usec
PL1 -6.00 dB
SFO1 400.1324710 MHz

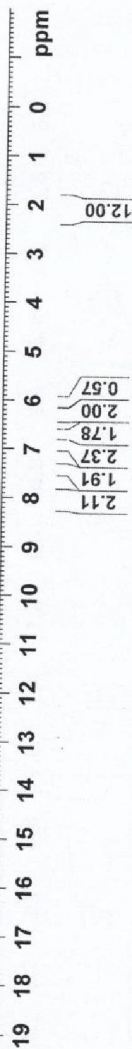
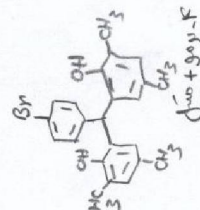
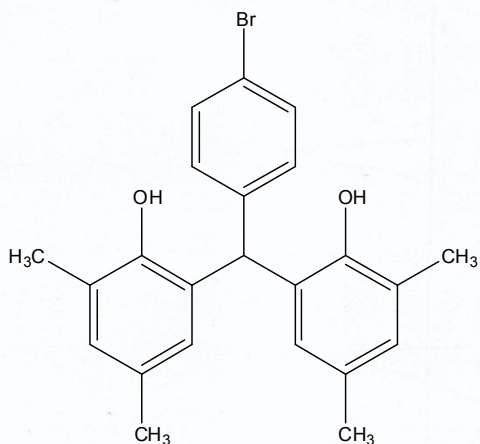
F2 - Processing parameters
SI 32768
SF 400.1300045 MHz
WDW EM
SSB 0
LB 0.30 Hz
GB 0
EC 1.00

7.965
7.388
6.886
6.704
6.251
6.072

3.318

2.459

2.069





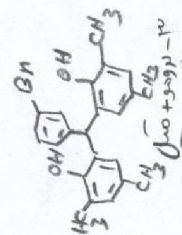
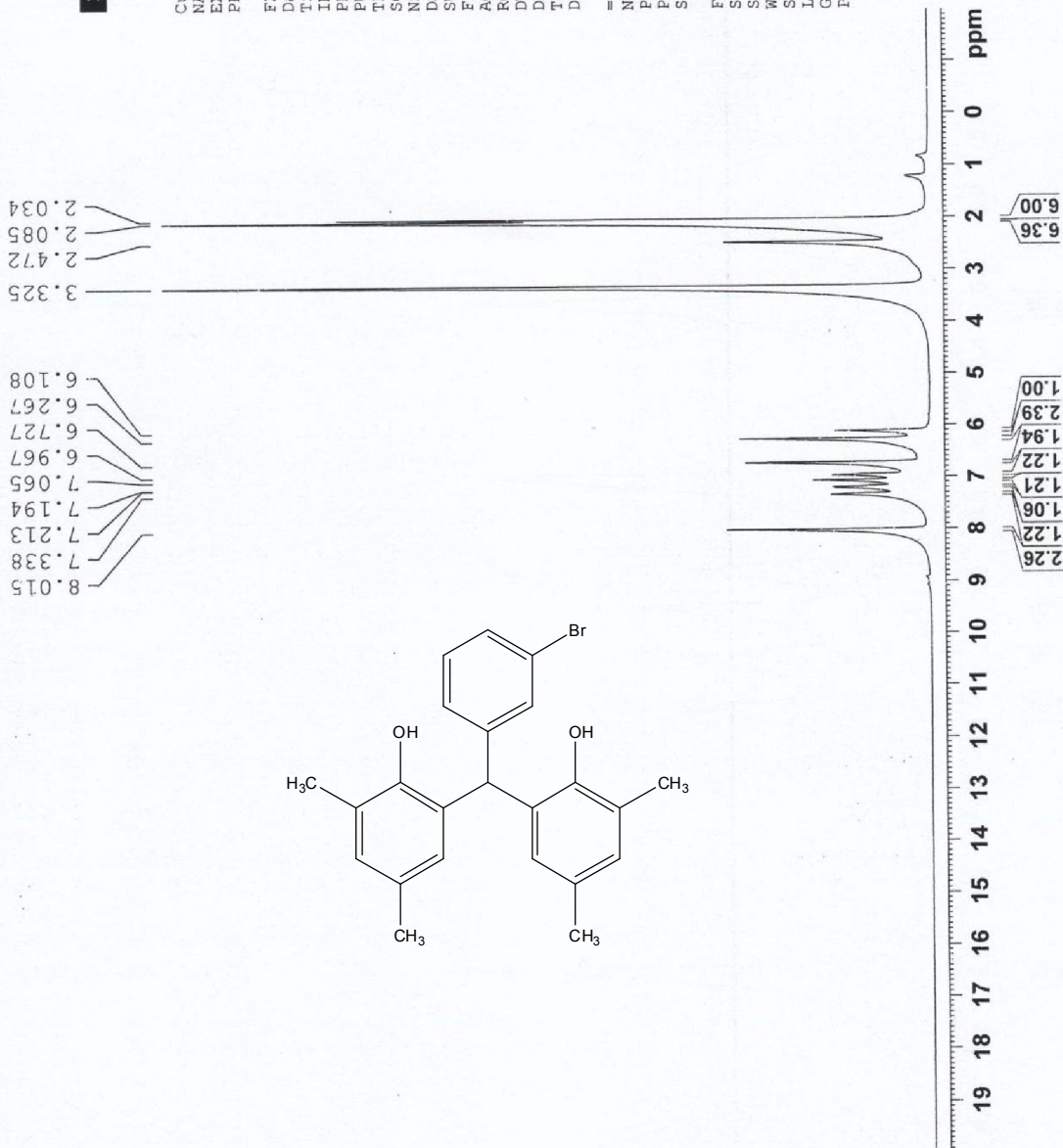
Current Data Parameters
NAME 3H-3
EXPNO 215
PROCNO 1

F2 - Acquisition Parameters

Date_ 20140309
Time 14.00
INSTRUM spect
PROBHD 5 mm Multinucl
PULPROG zg
TD 32768
SOLVENT DMSO
NS 32
DS 0
SWH 11574.074 Hz
FIDRES 0.353213 Hz
AQ 1.4156276 sec
RG 143.7
DW 43.200 usec
DE 6.00 usec
TE 300.0 K
D1 5.00000000 sec

===== CHANNEL f1 =====
NUC1 1H
P1 9.00 usec
PL1 -6.00 dB
SFO1 400.1324710 MHz

F2 - Processing parameters
SI 32768
SF 400.1300045 MHz
WDW EM
SSE 0
LB 0.30 Hz
GB 0
FC 1.00





Current Data Parameters
NAME 3H-3
EXPNO 170
PROCNO 1

F2 - Acquisition Parameters
Date_ 20140304
Time 8.19

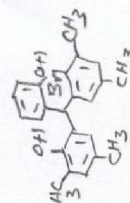
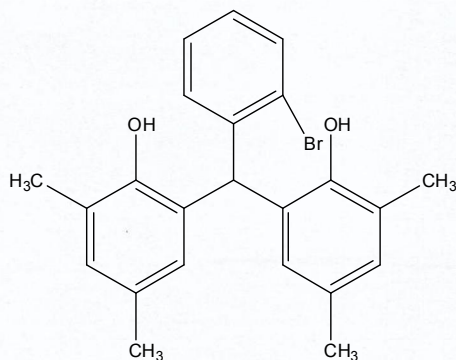
INSTRUM spect
PROBHD 5 mm Multinucl
PULPROG zg
TD 32768
SOLVENT DMSO
NS 32
DS 0
SWH 11574.074 Hz
FIDRES 0.353213 Hz
AQ 1.4156276 sec
RG 64
DW 43.200 usec
DE 6.00 usec
TE 300.0 K
D1 5.00000000 sec

===== CHANNEL f1 =====
NUC1 1H
P1 9.00 usec
PL1 -6.00 dB
SFO1 400.1324710 MHz

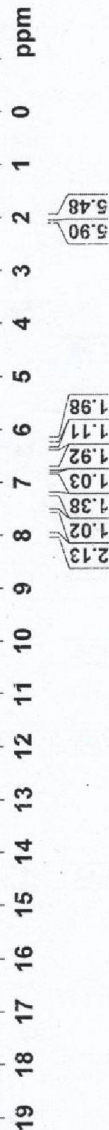
F2 - Processing parameters
SI 32768
SF 400.1300045 MHz
WDW EM
SSB 0
LB 0.30 Hz
GB 0
PC 1.00

7.970
7.538
7.218
7.103
7.087
6.836
6.722
6.356
6.184

3.349
2.478
2.091
2.020
1.944



2,2'-bis(4-hydroxy-3-methylphenyl)-1,1'-diphenyl ether



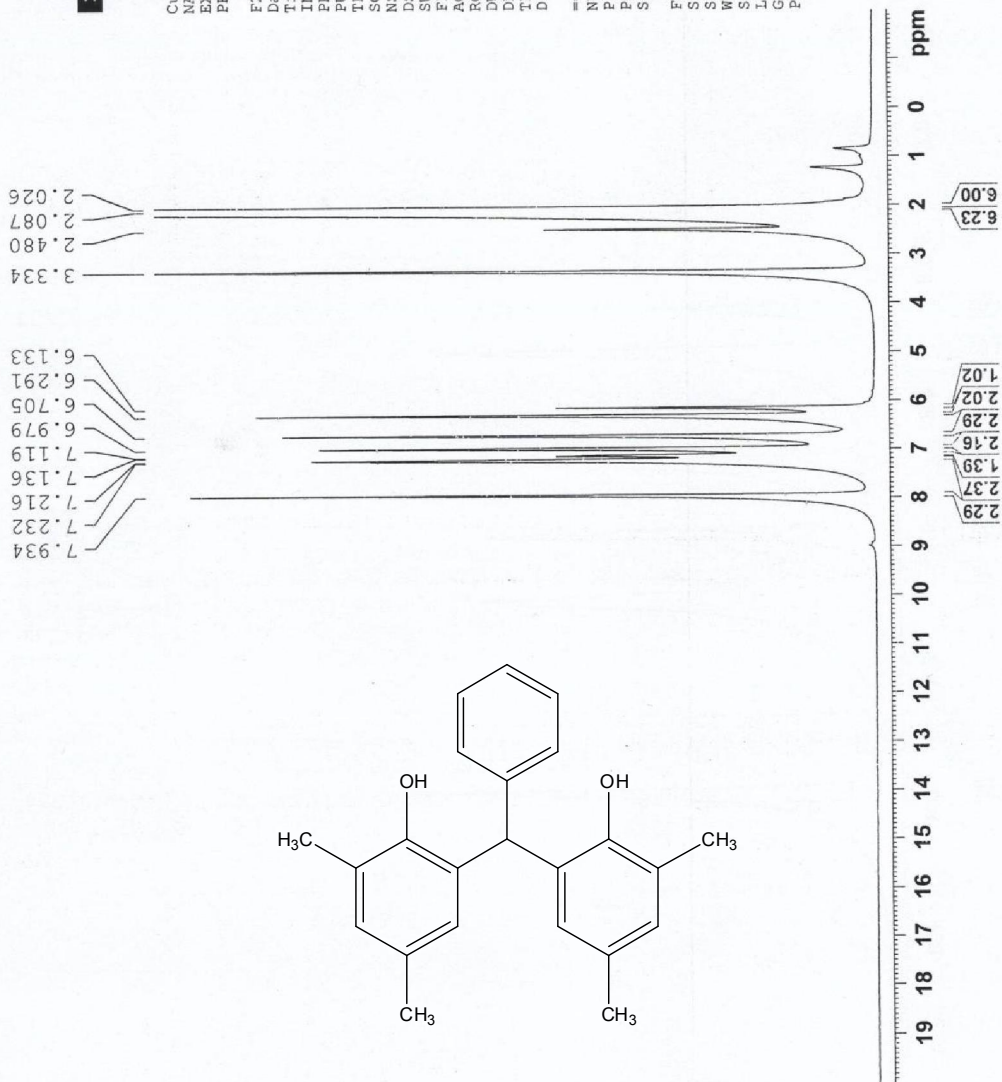


Current Data Parameters
NAME 3H-3
EXPNO 169
PROCNO 1

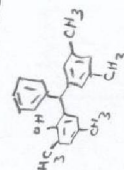
F2 - Acquisition Parameters
Date_ 20140303
Time_ 15.06
INSTRUM spect
PROBHD 5 mm Multinucl
PULPROG zg
TD 32768
SOLVENT DMSO
NS 32
DS 0
SWH 11574.074 Hz
FIDRES 0.353213 Hz
AQ 1.4156276 sec
RG 101.6
DW 43.200 usec
DE 6.00 usec
TE 300.0 K
D1 5.00000000 sec

===== CHANNEL f1 =====
NUC1 1H
P1 9.00 usec
PL1 -6.00 dB
SFO1 400.1324710 MHz

F2 - Processing parameters
SI 32768
SF 400.1300045 MHz
WDW EM
SSB 0
LB 0.30 Hz
GB 0
PC 1.00



بسم الله الرحمن الرحيم



بسم الله الرحمن الرحيم

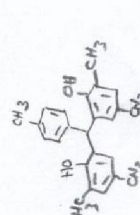


Current Data Parameters
NAME 3H-3
EXPNO 207
PROCNO 1

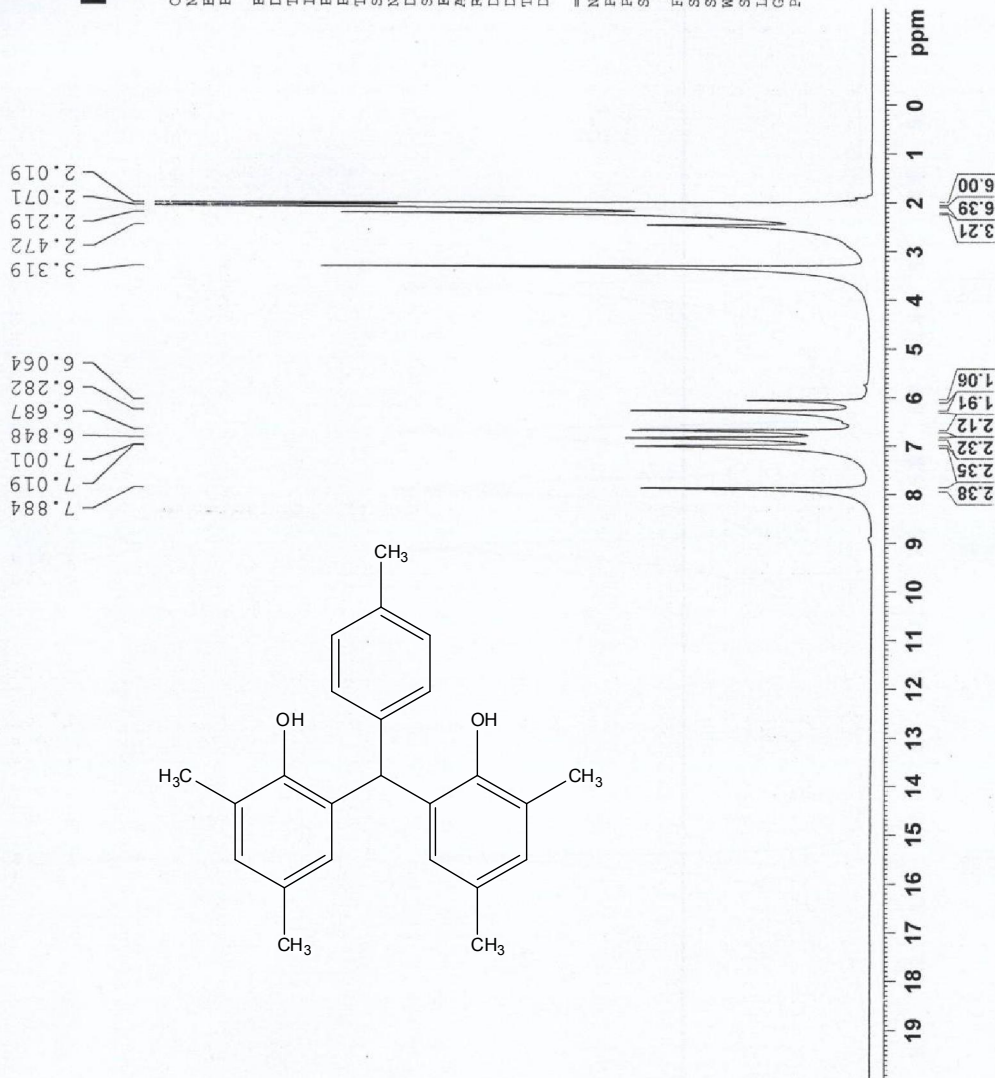
F2 - Acquisition Parameters
Date_ 20140308
Time 14.33
INSTRUM spect
PROBHD 5 mm Multinucl
PULPROG zg
TD 32768
SOLVENT DMSO
NS 32
DS 0
SWH 11574.074 Hz
FIDRES 0.353213 Hz
AQ 1.4156376 sec
RG 161.3
DW 43.200 usec
DE 6.00 usec
TE 300.0 K
D1 5.00000000 sec

===== CHANNEL f1 =====
NUC1 1H
P1 9.00 usec
PL1 -6.00 dB
SFO1 400.1324710 MHz

F2 - Processing parameters
SI 32768
SF 400.1300045 MHz
WDW EM
SSB 0
LB 0.30 Hz
GB 0
PC 1.00



مسجل - 15





Current Data Parameters
NAME 3H-3
EXPNO 238
PROCNO 1

F2 - Acquisition Parameters

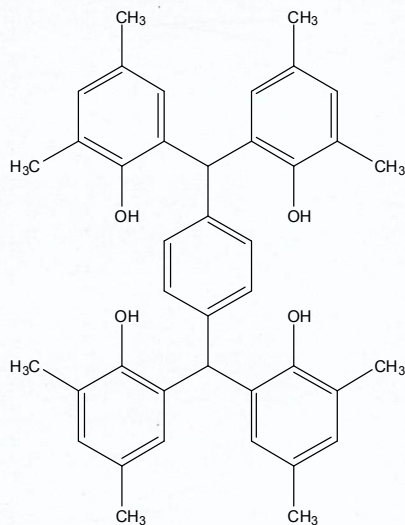
Date_ 20140312
Time 13.40
INSTRUM spect
PROBHD 5 mm Multinucl
PULPROG zg
TD 32768
SOLVENT DMSO
NS 32
DS 0
SWH 11574.074 Hz
FIDRES 0.353213 Hz
AQ 1.41156276 sec
RG 71.8
DE 43.200 usec
WE 6.00 usec
TE 300.0 K
D1 5.00000000 sec

===== CHANNEL f1 =====
NUC1 1H
P1 9.00 usec
PL1 -6.00 dB
SFO1 400.1324710 MHz

F2 - Processing parameters

SI 32768
SF 400.1300045 MHz
WDW EM
SSB 0
LB 0.30 Hz
GB 0
PC 1.00

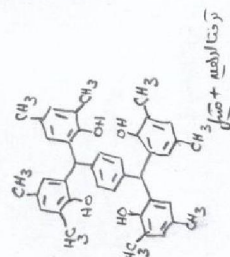
7.944
7.779
7.181
6.826
6.729
6.680
6.618
6.598
6.257
6.070
3.489
2.466
2.107
2.069
2.031
2.018
1.908



19 18 17 16 15 14 13 12 11 10 9 8 7 6 5 4 3 2 1 0 ppm

2.08
1.96
3.97
2.40
2.44
4.06
1.98

11.77
12.00





Current Data Parameters
NAME 3H-3
EXPNO 214
PROCNO 1

F2 - Acquisition Parameters

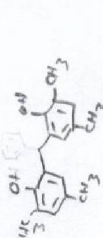
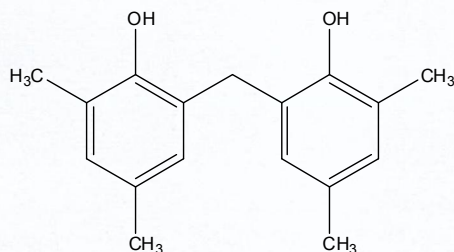
Date_ 20140309
Time_ 13.31
INSTRUM spect
PROBHD 5 mm Multinucl
PULPROG zg
TD 32768
SOLVENT DMSO
NS 32
DS 0
SWH 11574.074 Hz
FIDRES 0.353213 Hz
AQ 1.4156276 sec
RG 40.3
DW 43.200 usec
DE 6.00 usec
TE 300.0 K
D1 5.00000000 sec

===== CHANNEL f1 =====
NUC1 1H
P1 9.00 usec
PL1 -6.00 dB
SFO1 400.1324710 MHz

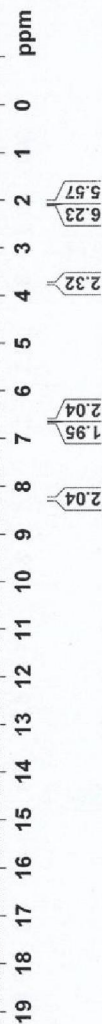
F2 - Processing parameters

SI 32768
SF 400.1300045 MHz
WDW EM
SSB 0
LB 0.30 Hz
GB 0
PC 1.00

8.254
6.681
6.628
3.877
3.742
3.387
2.465
2.102
2.066
2.000



2,2',6,6'-tetramethyl-4,4'-dihydroxybiphenyl





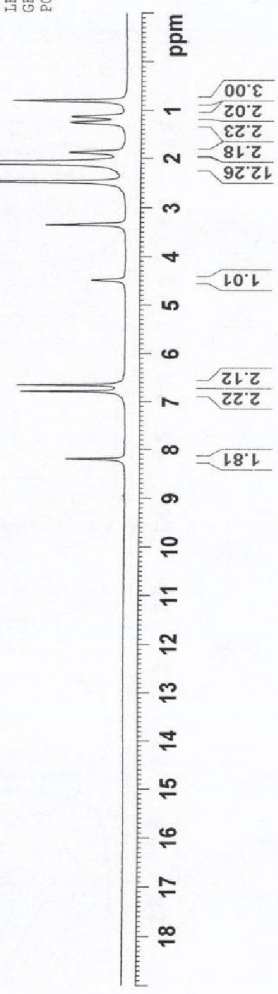
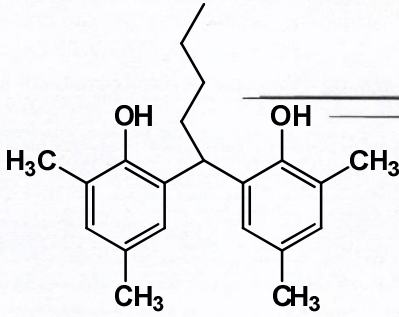
Current Data Parameters
NAME 3H-3
EXPNO 2392
PROCNO 1

F2 - Acquisition Parameters
Date_ 20150114
Time 9.52
INSTRUM spect
PROBHD 5 mm Multinucl
PULPROG zg
TD 32768
SOLVENT DMSO
NS 16
DS 0
SWH 8012.820 Hz
FIDRES 0.244532 Hz
AQ 2.0447731 sec
RG 406.4
DM 62.400 usec
DE 6.00 usec
TE 300.0 K
D1 5.00000000 sec

===== CHANNEL f1 =====
NUC1 1H
P1 9.00 usec
PL1 -6.00 dB
SF01 400.1336012 MHz

F2 - Processing parameters
SI 32768
SF 400.1300065 MHz
WDW EM
SSB 0
LB 0.30 Hz
GB 0
PC 1.00

8.201
6.793
6.654
4.491
3.354
2.479
2.108
2.076
1.881
1.254
1.138
0.803





Current Data Parameters
NAME 3H-3
EXPNO 2381
PROCNO 1

F2 - Acquisition Parameters

Date_ 20150114
Time 9.46
INSTRUM spect
PROBHD 5 mm Multinucl
PULPROG 32769
TD 65536
SOLVENT DMSO
NS 16
DS 0
SWH 8012.820 Hz
FIDRES 0.244532 Hz
AQ 2.0447731 sec
RG 574.7
DW 62.400 usec
DE 6.00 usec
TE 300.0 K
D1 5.0000000 sec

===== CHANNEL f1 =====
NUC1 1H
P1 9.00 usec
PL1 -6.00 dB
SFO1 400.1336012 MHz

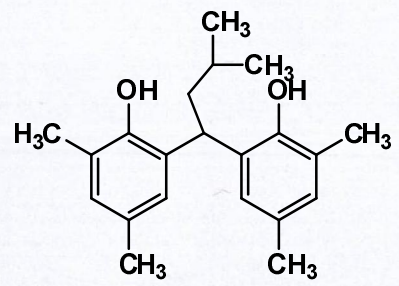
F2 - Processing parameters

SI 32768
SF 400.130095 MHz
WDW EM
SSB 0
LB 0.30 Hz
GB 0
PC 1.00

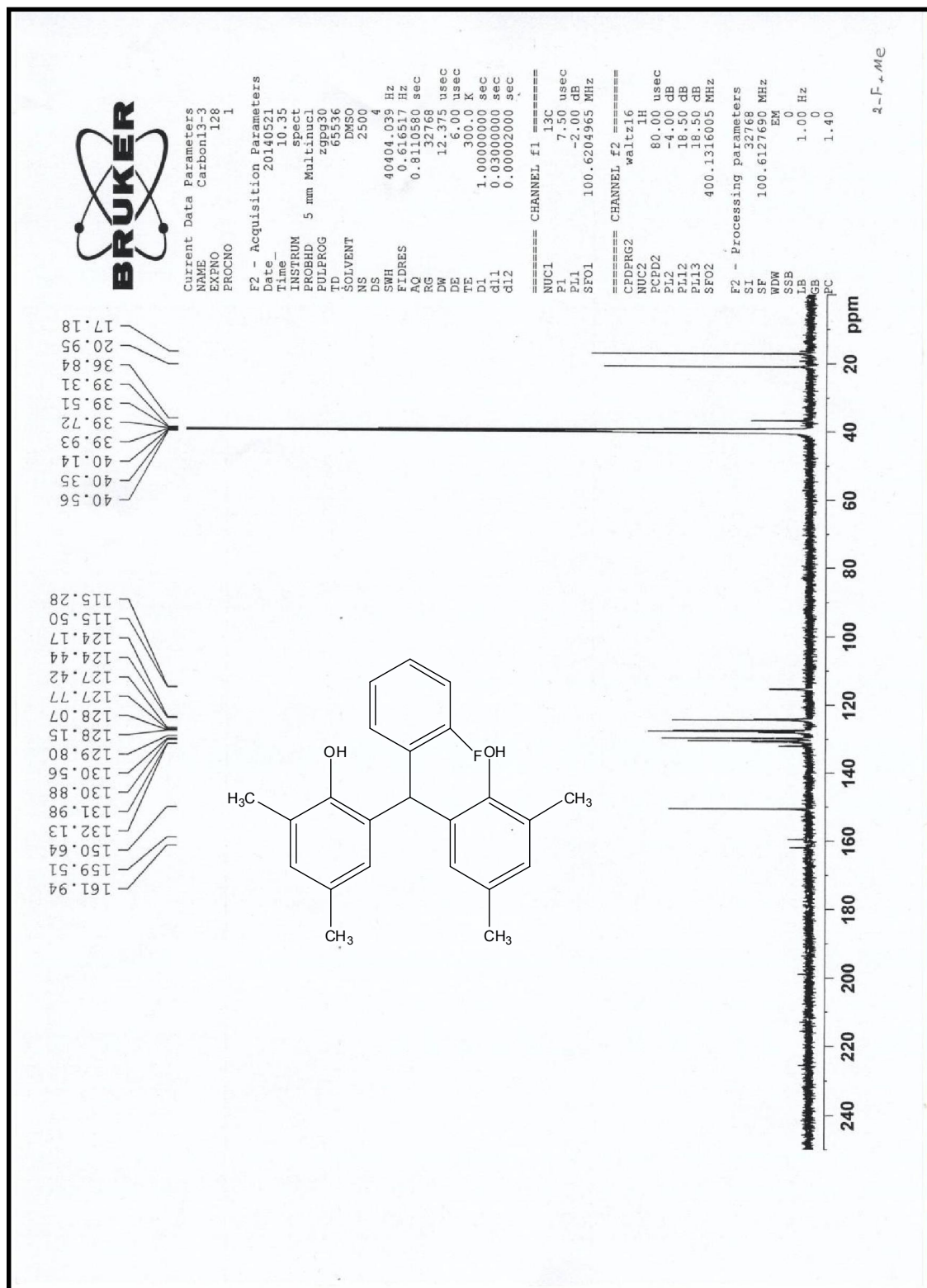
0.854
1.326
1.342
1.358
1.763
1.780
1.798
2.085
2.115
2.484
3.336
3.359
4.625
4.643
4.662
6.815
6.859
8.256

6.00
1.02
2.01
6.01
6.13
1.00
2.09
2.24
1.87

ppm



¹³C NMR Spectra of selected compounds.





Current Data Parameters
NAME Carbon13-3
EXPNO 133
PROCNO 1

F2 - Acquisition Parameters
Date_ 20140525

Time 13.47
INSTRUM spect
PROBHD 5 mm Multinuc1
PULPROG zgpg30
TD 65536
SOLVENT DMSO
NS 2500
DS 4
SWH 40404.039 Hz
FIDRES 0.616317 Hz
AQ 0.6110580 sec
RG 32768
DM 12.375 usec
DE 6.00 usec
TE 300.0 K
D1 1.00000000 sec
d11 0.03000000 sec
d12 0.00020000 sec

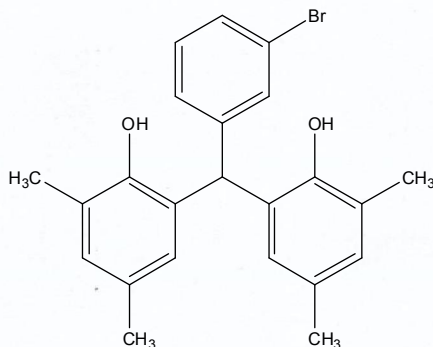
===== CHANNEL f1 =====
NUC1 ¹³C
P1 7.50 usec
PL1 -2.00 dB
SFO1 100.6204965 MHz

===== CHANNEL f2 =====
CPDPRG2 waltz16
NUC2 ¹H
PCPD2 80.00 usec
PL2 -4.00 dB
PL12 18.50 dB
PL13 18.50 dB
SFO2 400.1316005 MHz

F2 - Processing parameters
SI 32768
SF 100.6127690 MHz
WDW EM
SSB 0
LB 1.00 Hz
GB 0
PC 1.40

43.50
40.58
40.38
40.17
39.96
39.75
39.54
39.33
20.94
17.19

150.68
148.06
131.98
130.94
130.57
129.86
128.98
128.73
128.07
127.57
124.65
121.84



ppm

307.46



Current Data Parameters
NAME Carbon13-3
EXPNO 129
PROCNO 1

F2 - Acquisition Parameters
Date_ 20140524
Time_ 11.03
INSTRUM spect
PROBHD 5 mm Multinucl
PULPROG zgpg30
TD 65536
SOLVENT DMSO
NS 2500
DS 4
SWH 40404.039 Hz
FIDRES 0.616517 Hz
AQ 0.8110580 sec
RG 32768
DM 12.375 usec
DE 6.00 usec
TE 300.0 K
D1 1.00000000 sec
d11 0.03000000 sec
d12 0.00002000 sec

===== CHANNEL f1 =====
NUC1 13C
P1 7.50 usec
PL1 -2.00 dB
SF01 100.6204965 MHz
===== CHANNEL f2 =====
CPDPRG2 waltz16
NUC2 1H
PCPD2 80.00 usec
PL2 -4.00 dB
PL12 18.50 dB
PL13 18.50 dB
SF02 400.1316005 MHz

F2 - Processing parameters
SI 32768
SF 100.6127690 MHz
WDW EM
SSB 0
LB 1.00 Hz
GB 0
PC 1.40

4-MC + Me





Current Data Parameters
NAME Carbon13-3
EXPNO 144
PROCNO 1

F2 - Acquisition Parameters
Date_ 20140531
Time_ 13.46
INSTRUM spect
PROBHD 5 mm Multinucl
PULPROG zgpg30
TD 65536
SOLVENT DMSO
NS 2500
DS 4
SWH 40404.039 Hz
FIDRES 0.616517 Hz
AQ 0.8110580 sec
RG 32768
DE 12.375 usec
TE 300.0 K
D1 1.00000000 sec
d11 0.03000000 sec
d12 0.0002000 sec

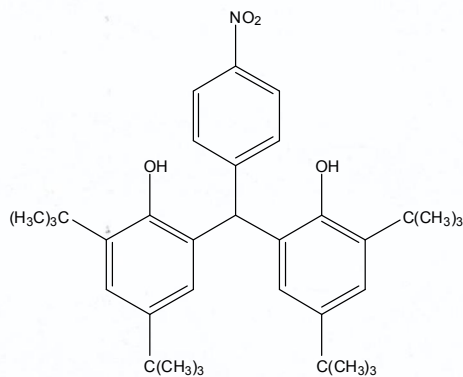
CHANNEL f1 =====
NUC1 ¹³C
P1 7.50 usec
PL1 -2.00 dB
SF01 100.6204985 MHz

CHANNEL f2 =====
CPDPRG2 waltz16
NUC2 ¹H
PCPD2 80.00 usec
PL2 -4.00 dB
PL12 18.50 dB
PL13 18.50 dB
SFO2 400.1316005 MHz

F2 - Processing parameters
SI 32768
SF 100.6127690 MHz
WDW EM
SSB 0
LB 1.00 Hz
GB 0
FC 1.40

tert-butyl + 4-n

153.25
151.02
146.18
141.46
137.52
130.87
130.64
130.50
125.08
123.47
121.76



44.12
40.54
40.33
40.12
39.91
39.70
39.50
39.29
35.16
34.27
31.70
30.35

ppm



Current Data Parameters
NAME Carbon13-3
EXPNO 122
PROCNO 1

F2 - Acquisition Parameters
Date_ 20140518
Time 13.53
INSTRUM spect
PROBHD 5 mm Multinucl
PULPROG zgpg30
TD 65536
SOLVENT DMSO
NS 2500
DS 4
SWH 40404.039 Hz
FIDRES 0.616517 Hz
AQ 0.8110580 sec
RG 32768
DW 12.375 usec
DE 6.00 usec
TE 300.0 K
D1 1.00000000 sec
d11 0.03000000 sec
d12 0.00002000 sec

===== CHANNEL f1 =====
NUC1 13C
P1 7.50 usec
PL1 -2.00 dB
SFO1 100.6204965 MHz

===== CHANNEL f2 =====
CPDPRG2 waltz16
NUC2 1H
PCPD2 80.00 usec
PL2 -4.00 dB
PL12 18.50 dB
PL13 18.50 dB
SFO2 400.1316005 MHz

F2 - Processing parameters
SI 32768
SF 100.6127690 MHz
WDW EM
SSB 0
LB 1.00 Hz
GB 0
FC 1.40

Then + Me

