

Supporting Information for “Formation Mechanism of Silver Nano-Particle 1D Micro-  
Structures and their Hierarchic Assembly into 3D Superstructures” by Lorenza Suber and William  
R. Plunkett

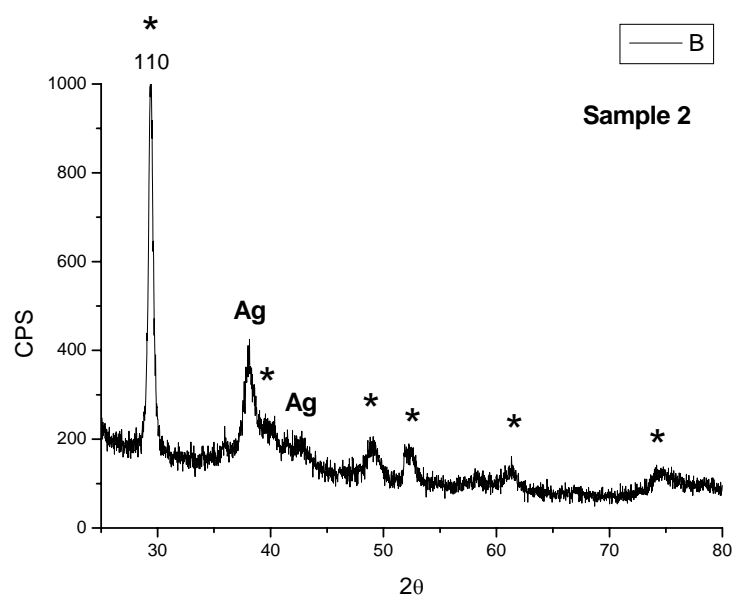


Figure a: XRD spectrum of Sample 2 (linear particle aggregates). The peaks marked with \* are attributed to the AgCN rhombohedral structure (JCPDS 23-1404).

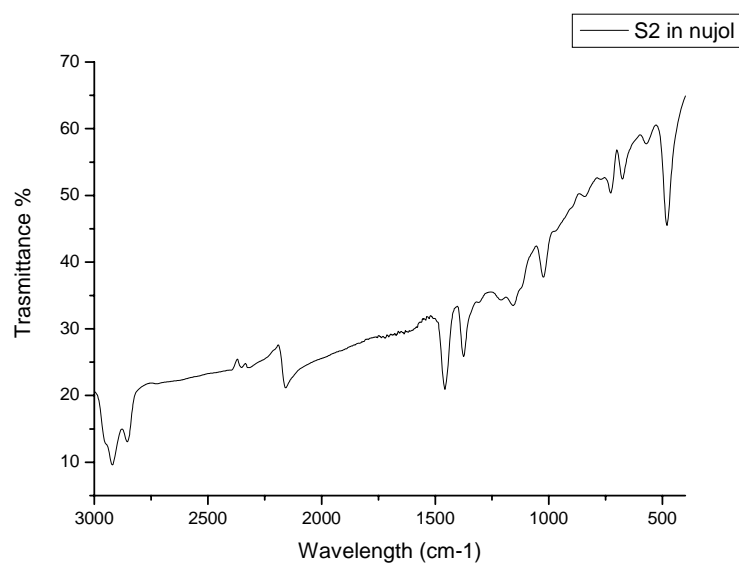


Figure b: IR spectrum of Sample 2 in Nujol.

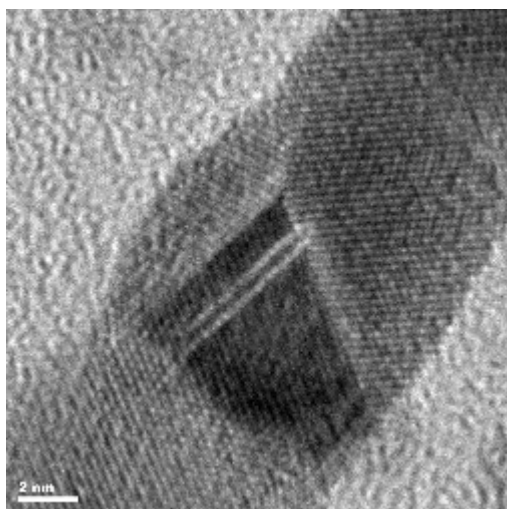


Figure c: HR-TEM micrograph of Sample 2 showing linearly aggregated silver particles into the polymer sheath. The bar size is 2nm.

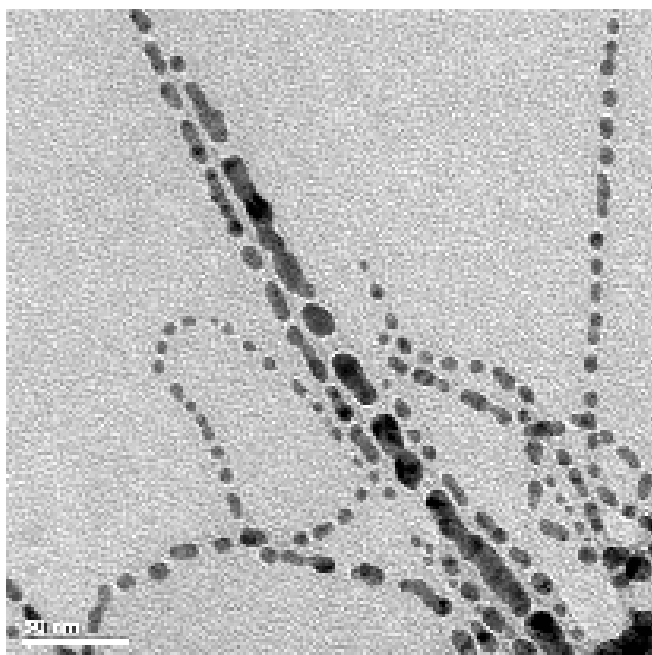


Figure d: TEM micrograph on sample 2 showing linearly aggregated silver particles.  
The bar size is 50nm.

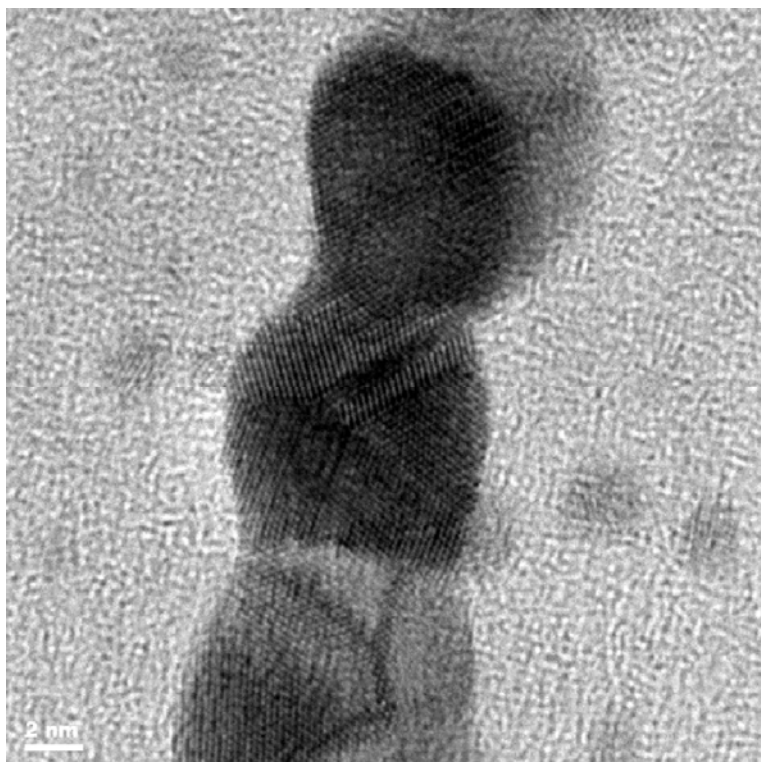


Figure e: HR-TEM micrograph of sample 2 showing linearly aggregated silver particles.  
The bar size is 2nm.

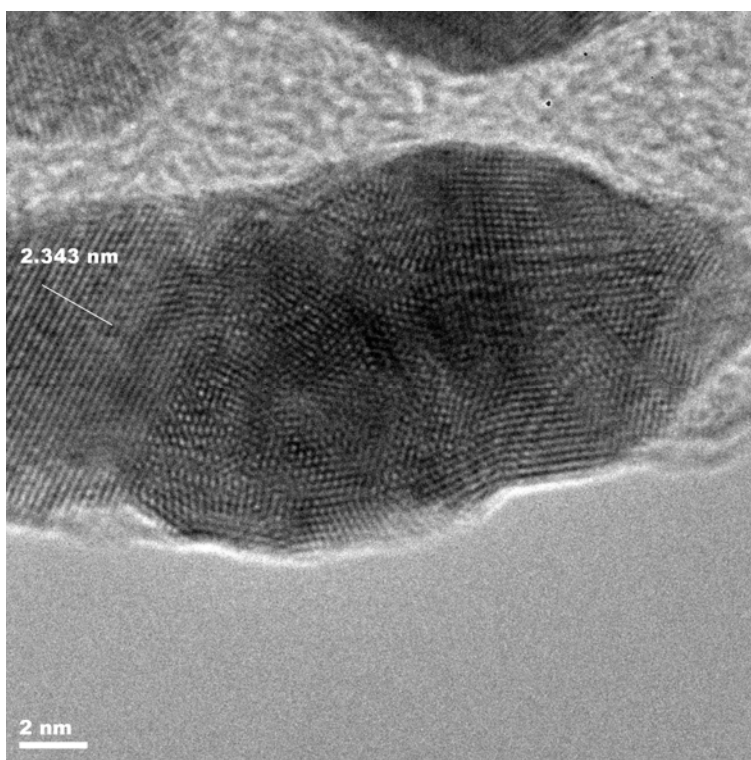


Figure f: HR-TEM of Sample 2 showing (111) silver lattice fringes.

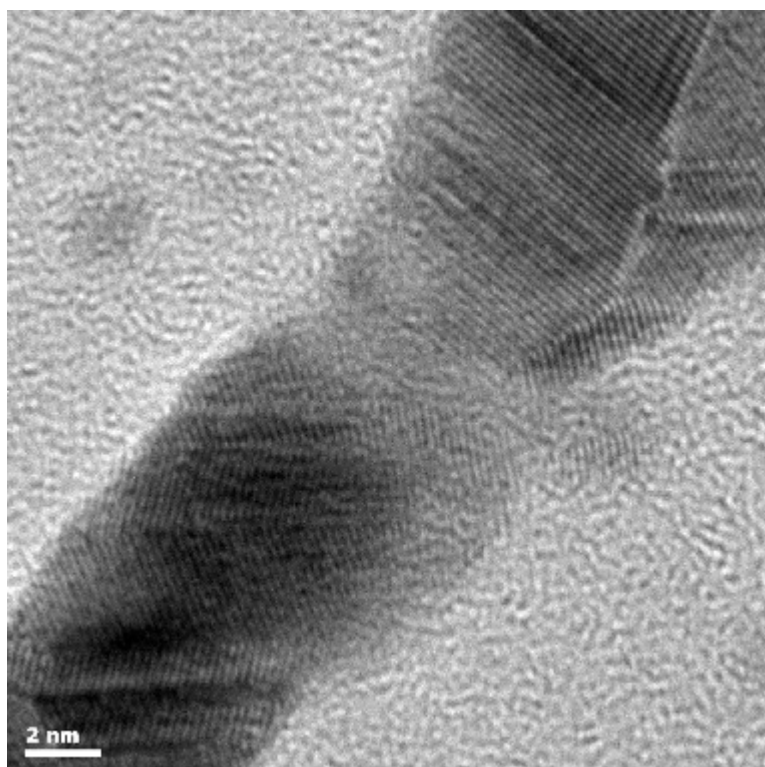


Figure g: HR-TEM micrograph of Sample 2 showing linearly aggregated silver particles.