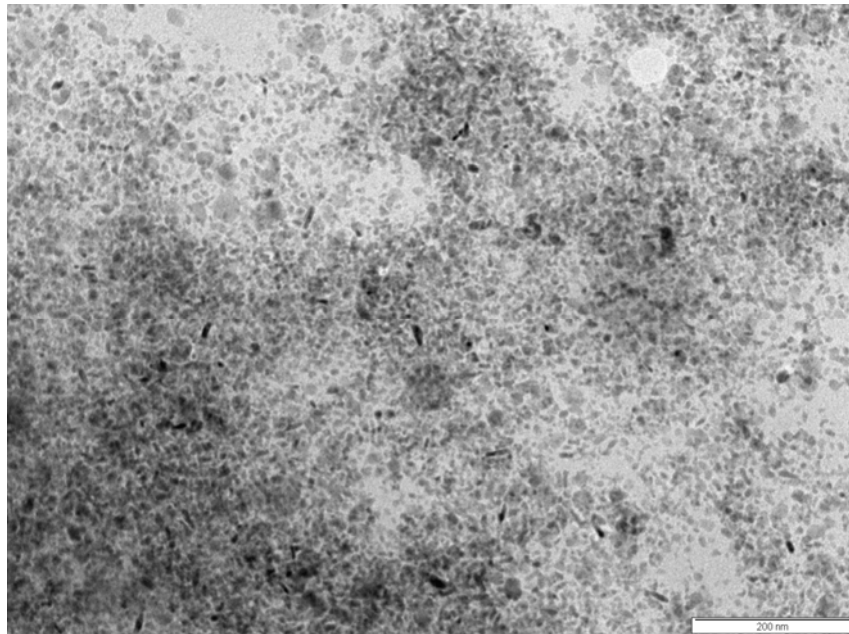
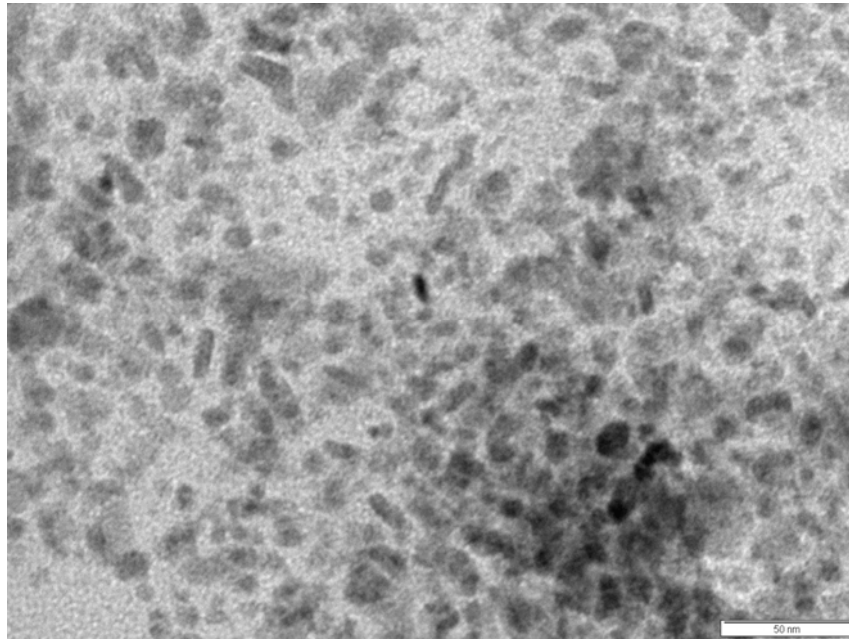


Supplementary Material (ESI) for Nanoscale

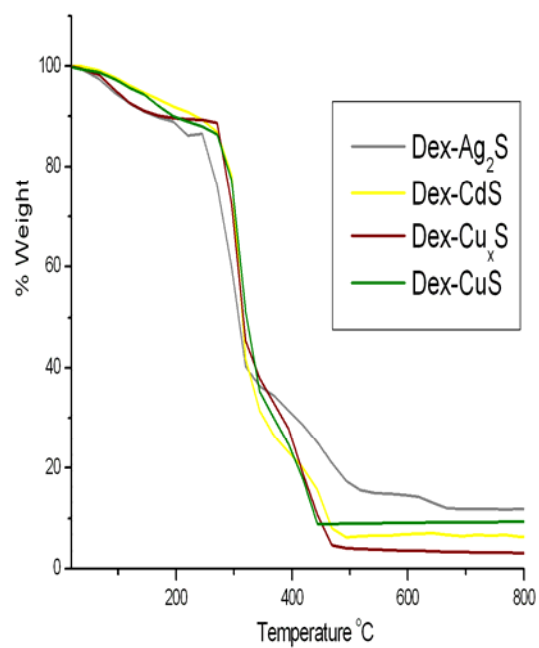
This journal is (c) The Royal Society of Chemistry 2009



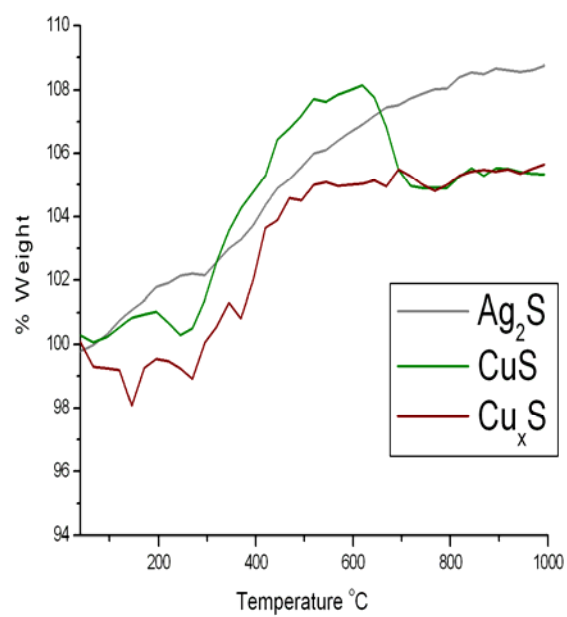
Supplementary Information S1. Photograph of sample of Sephadex beads coated with CuS nanoparticles.



Supplementary Information S2. TEM micrographs of CuS nanoparticles released by enzymatic treatment of CuS coated Sephadex beads.



Supporting Information S3. Graph of TGA measurements (with air flow) of prepared dried dextran-metal sulfides.



Supporting Information S4. Graph of TGA measurements (with air flow) of prepared dried dextran-metal sulfides following dextranase treatment.