

Supporting information

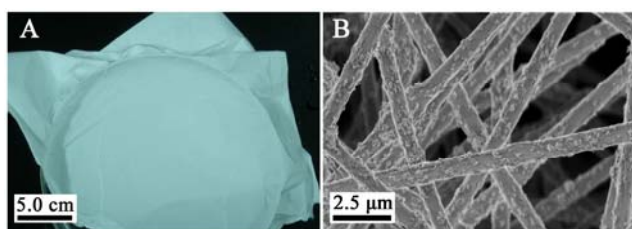


Figure S1. The nHA/PLA film was white and displayed similar nano-scale architectures to that of γ -Fe₂O₃/nHA/PLA.

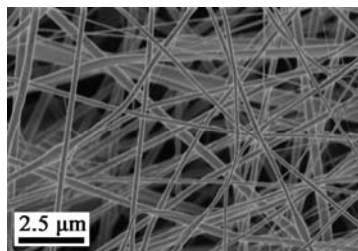


Figure S2. Fibres composed of γ -Fe₂O₃ and PLA have a smooth surface.

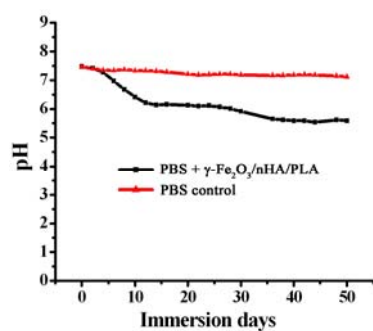


Figure S3. The pH value of the PBS buffer solution decreased from 7.4 to 5.5 when the γ -Fe₂O₃/nHA/PLA film was immersed in the PBS buffer solution at 37°C for 8 weeks with no fresh buffer replacement.

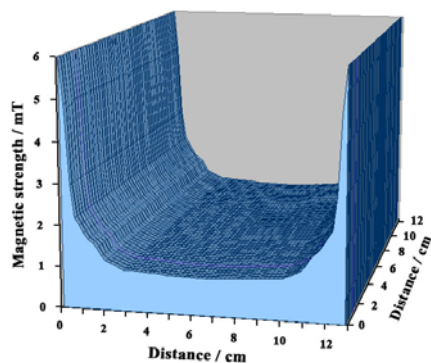


Figure S4. The distribution of magnetic field strength in the space where the cells culture plates are placed.

Table S1 BALP concentration of cells cultivated in tissue culture plastic wells (n=3).

condition	BALP concentration (U/L)
Tissue culture plastic	8.83±0.774
Tissue culture plastic + MF	8.42±0.436