

Formation of cobalt-Prussian Blue nanoparticles in a biopolymer matrix

By Andrew M. Collins, Stephen Mann and Simon R. Hall

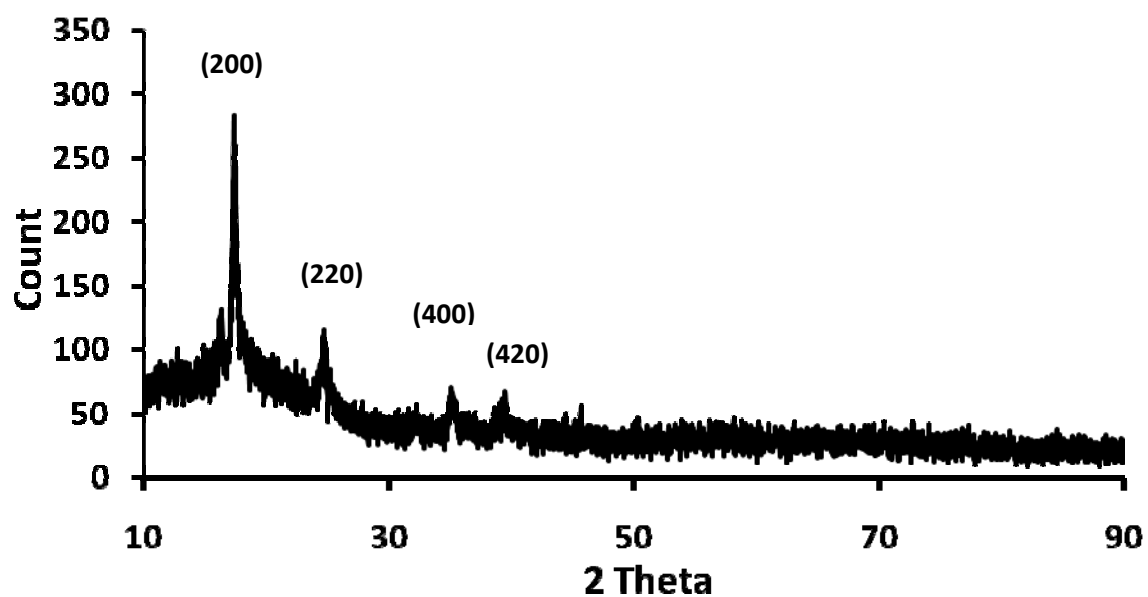


Figure S1. XRD pattern obtained from a cast film of chitosan containing cobalt hexacyanoferrate nanoparticles. Peaks are indexed to $\text{Co}_3[\text{Fe}(\text{CN})_6]\cdot 10\text{H}_2\text{O}$ (JCPDS card no. 46-907).

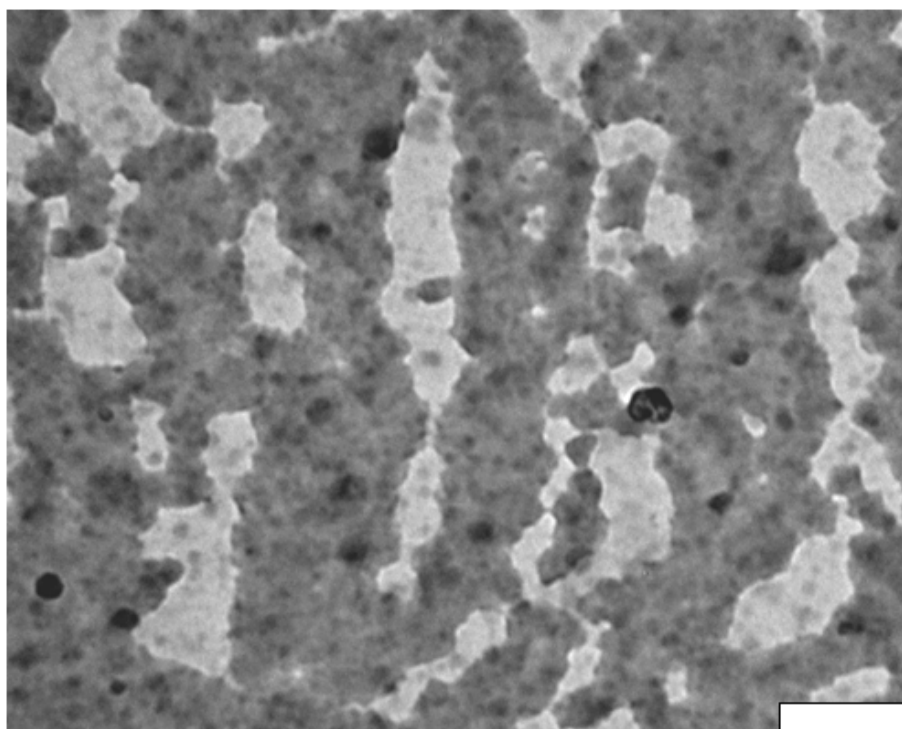


Figure S2 TEM micrograph depicting a film of chitosan and cobalt hexacyanoferrate prepared from a 1wt% chitosan casting solution. Scale bar 200 nm