

Electronic Supplementary Information

**Cytotoxicity of sophorolipid-gellan gum-gold nanoparticle conjugates and their
doxorubicin loaded derivatives towards human glioma and human glioma stem
cell lines**

Fig. S1: Z stacking images to show the uptake of Texas red labeled sophorolipid gold nanoparticles in human glioma LN229 cells.

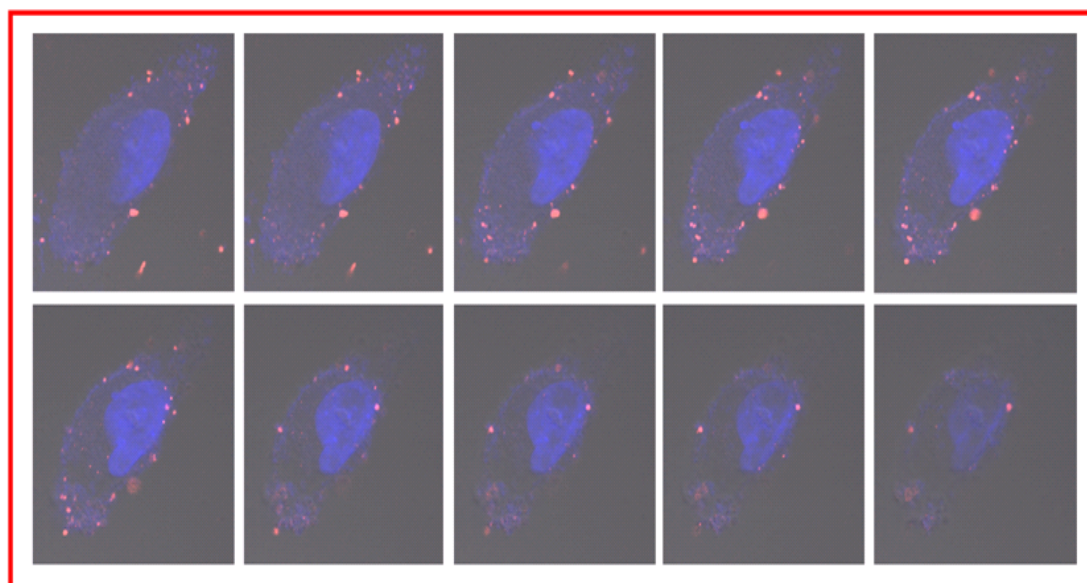


Fig. S2. Thermogravimetry analysis data obtained from powders of (a) Gellan Gum reduced gold nanoparticles (b) SL loaded GG reduced gold nanoparticles and (c) DOX-SL-GG-gold nanoparticle conjugates.

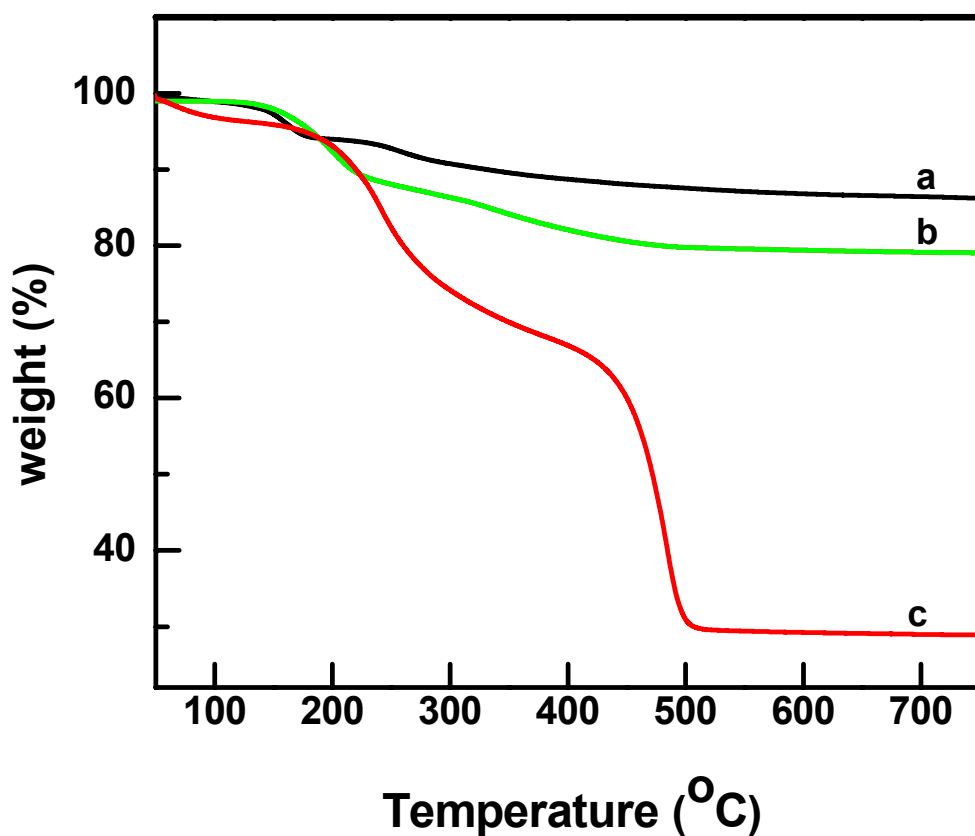


Fig. S3. (A) Fluorescence spectra of doxorubicin loaded sophorolipid gold nanoparticles **(a)** doxorubicin solution and **(b)** doxorubicin loaded sophorolipid gold nanoparticles **(B)** Stability study doxorubicin loaded sophorolipid gold nanoparticles, $t=3$ months.

