

Electronic Supplementary Information

Facile synthesis of NiAl-layered double hydroxide/graphene hybrid with enhanced electrochemical properties for detection of dopamine

Meixia Li,^a Jun E Zhu,^a Lili Zhang,^b Xu Chen,^{*a} Huimin Zhang,^b Fazhi Zhang,^a Sailong Xu^{*a} and David G. Evans^a

^a State Key Laboratory of Chemical Resource Engineering, Beijing University of Chemical Technology, Beijing 100029, China; Email: xusl@buct.cn (S. L); chenxu@mail.buct.edu.cn (X. Chen);

^b Division of science, Beijing Institute of Technology, Beijing 100081, China.

Figure S1

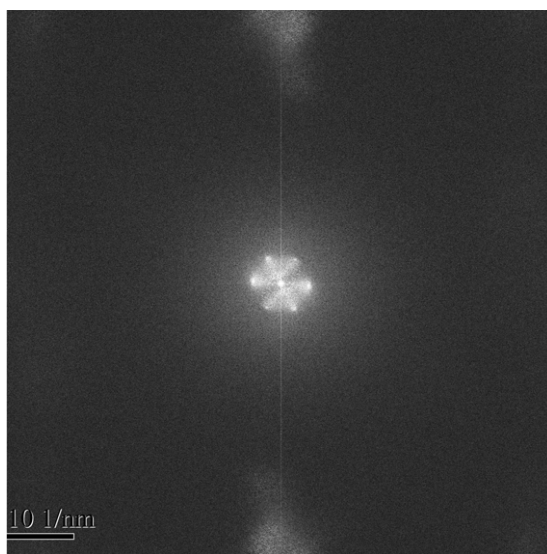


Fig. S1 An image obtained by two-dimensional fast Fourier transform of the HRTEM image of Fig. 3b.

Figure S2

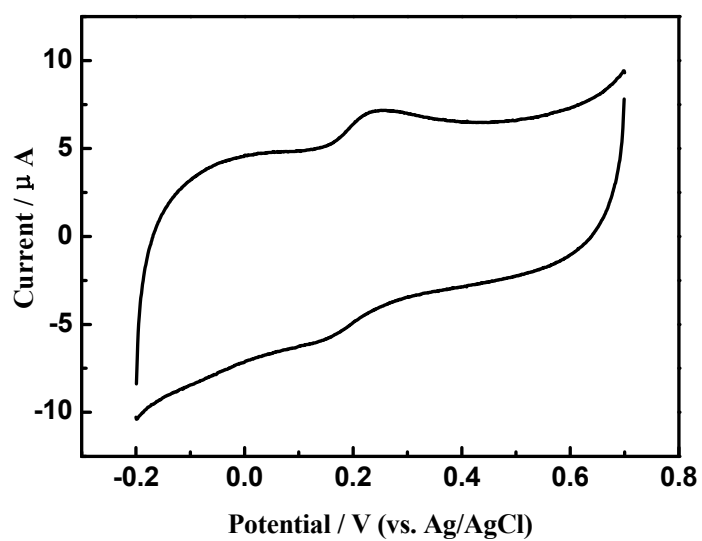


Fig. S2 CV curve of the pristine G modified electrode in pH 7.0 PBS solution in the presence of 100 μM DA at a scan rate of 0.1 V/s.