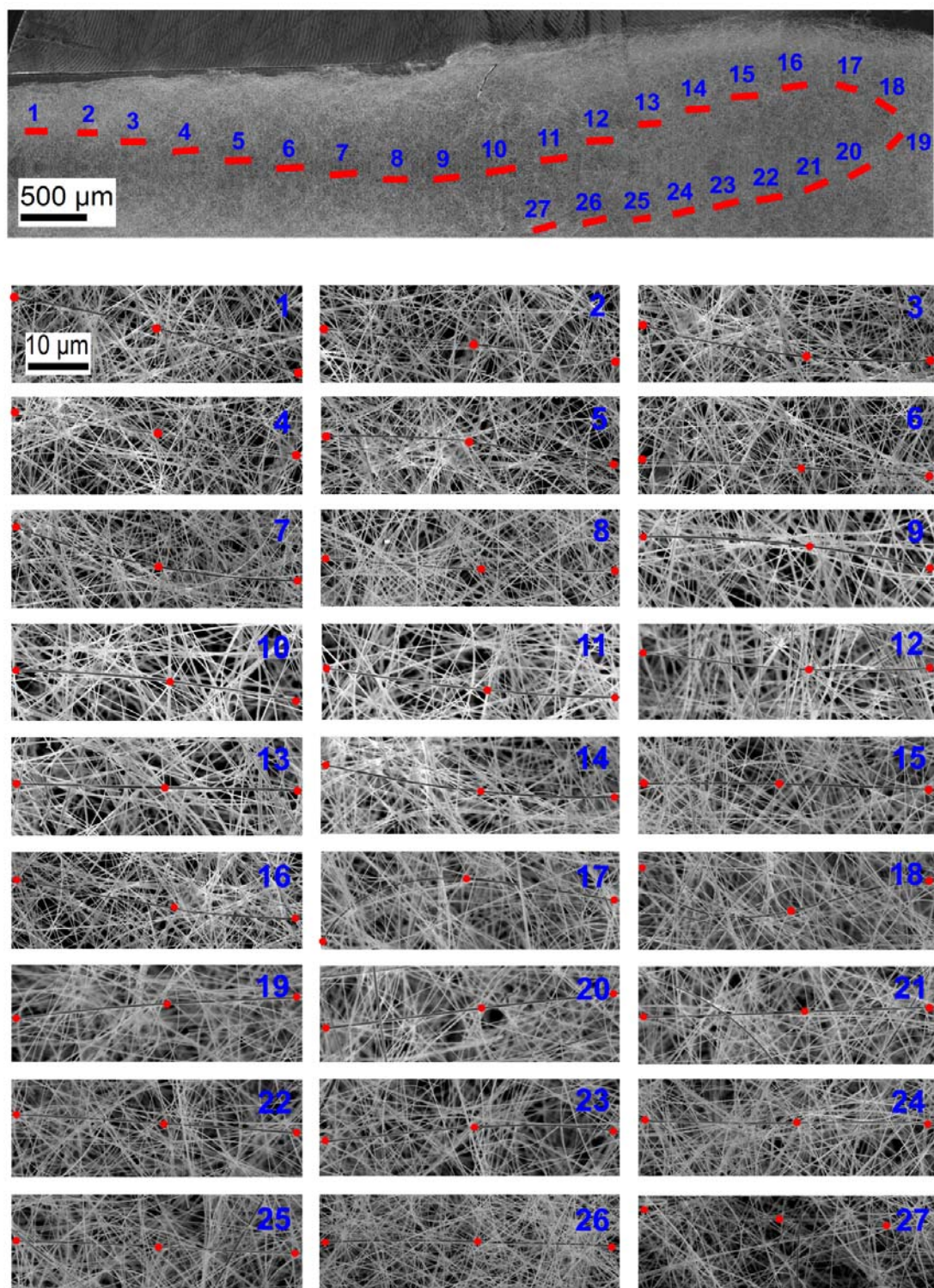


## **Electronic Supplementary Information**

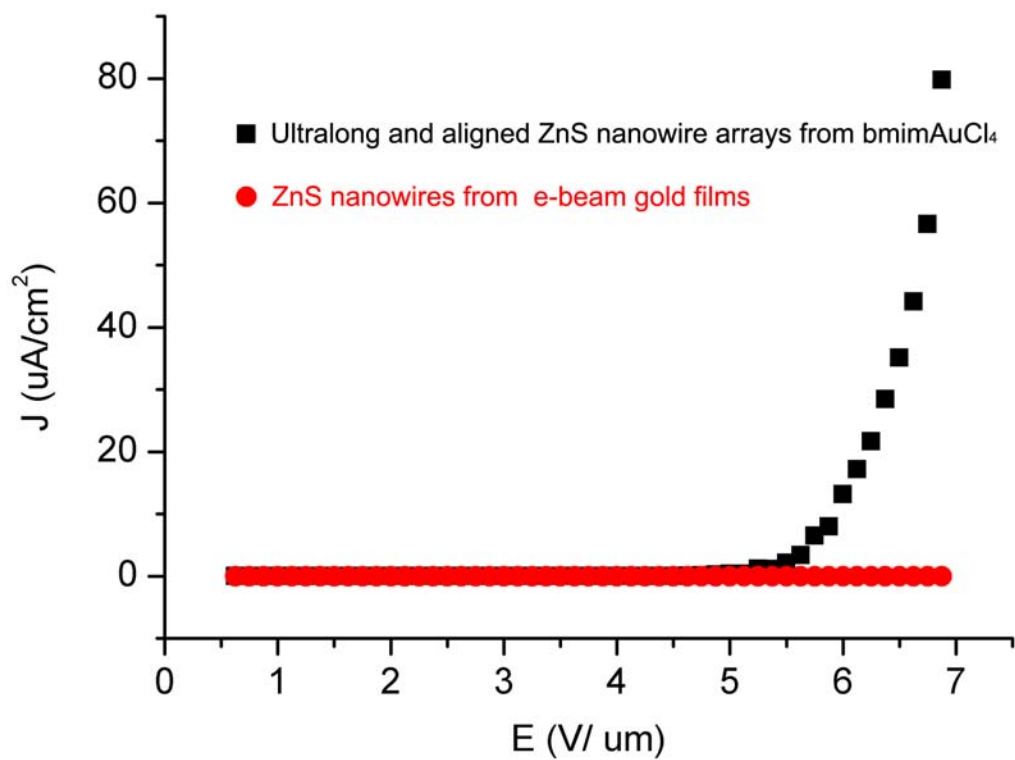
### **Dense and vertically-aligned centimeter-long ZnS nanowire arrays: ionic liquid assisted synthesis and their field emission properties**

Shimou Chen,\* Liang Li,\* Xi Wang,\* Wei Tian, Xuebing Wang, Dai-Ming Tang,  
Yoshio Bando, Dmitri Golberg

*International Center for Materials Nanoarchitectonics (MANA), National Institute for Materials  
Science (NIMS), Namiki 1-1, Tsukuba, Ibaraki 3050044, Japan*



**Fig. S1.** Tracing a centimeter-long ZnS nanowire in SEM. The rough location of the 27 SEM images is marked in the upper low magnification view, the red dots in each image highlight the nanowire of interest.



**Fig. S2.** Comparative field emission properties of ultralong and aligned ZnS nanowire arrays from bmimAuCl<sub>4</sub> (black plot); and ZnS nanowires from electron beam gold film. The measurements were performed with the same experimental set-up.