

Electronic Supplementary Information

Selective determination of dopamine using quantum-sized gold nanoparticles protected with charge selective ligands

*Kyuju Kwak, S. Senthil Kumar and Dongil Lee**

Department of Chemistry, Yonsei University, Seoul 120-749, Korea

Contents

Fig. S1 TEM image of the synthesized GS-Au ₂₅	s1
Fig. S2 SWV of 1 mM GS-Au ₂₅ in 0.1 M KCl	s1
Fig. S3 CVs demonstrating the effect of scan rate on the electrochemical behaviour of GS-Au ₂₅ ME.....	s2
Fig. S4 CVs demonstrating the oxidation of DA and AA at bare GCE.....	s2
Fig. S5 CVs of GS-Au ₂₅ ME in the absence and presence of 10 μM DA at different pH.....	s3

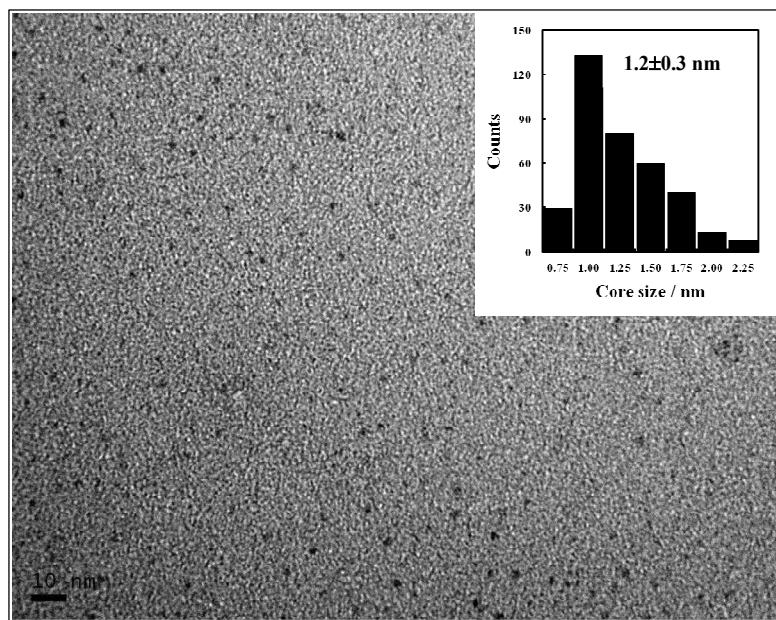


Fig. S1 TEM image of the synthesized GS-Au₂₅. The inset shows the histogram illustrating the core size distribution.

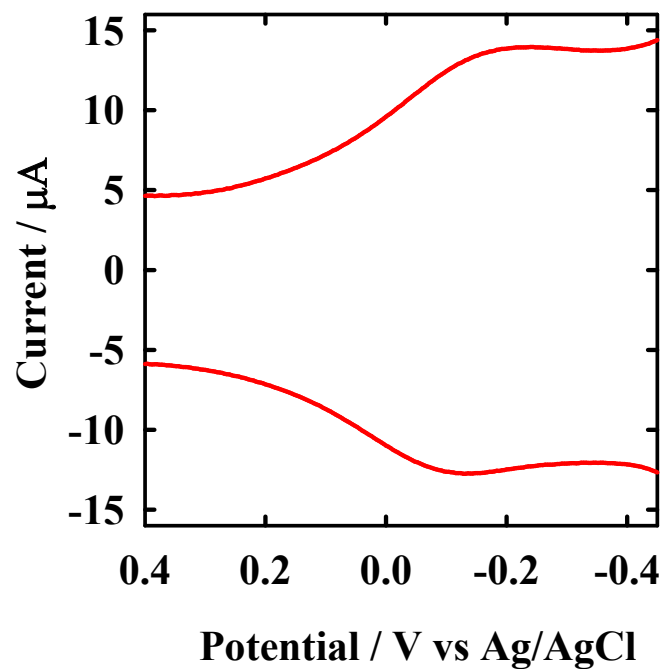


Fig. S2 SWV of 1 mM GS-Au₂₅ dissolved in 0.1 M KCl at GCE working electrode.

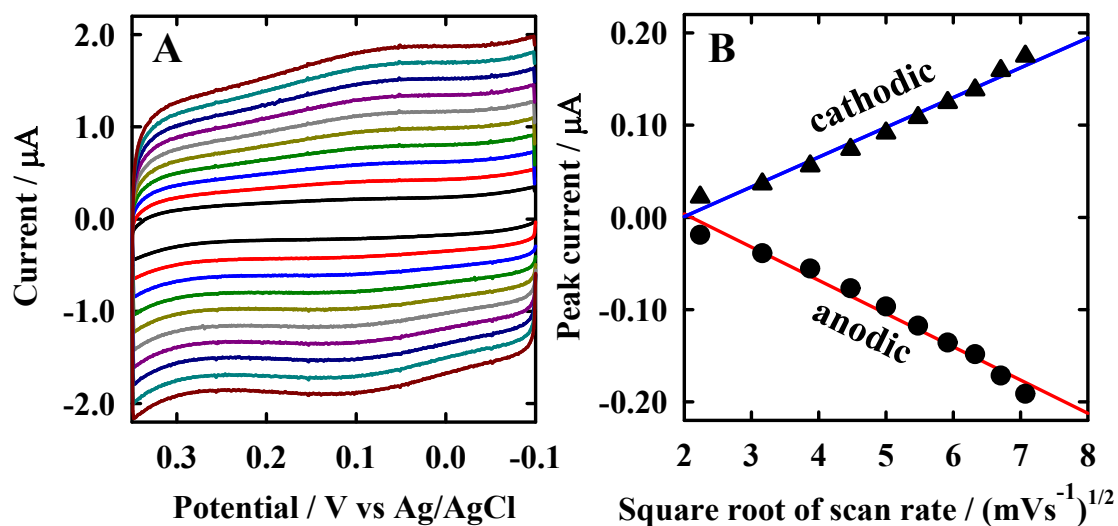


Fig. S3 (A) CVs of GS-Au₂₅ME at varying scan rates (inner to outer voltammograms correspond to 5, 10, 15, 20, 25, 30, 35, 40, 45 and 50 mVs⁻¹ respectively). (B) Dependence of anodic and cathodic peak currents on the square root of scan rate.

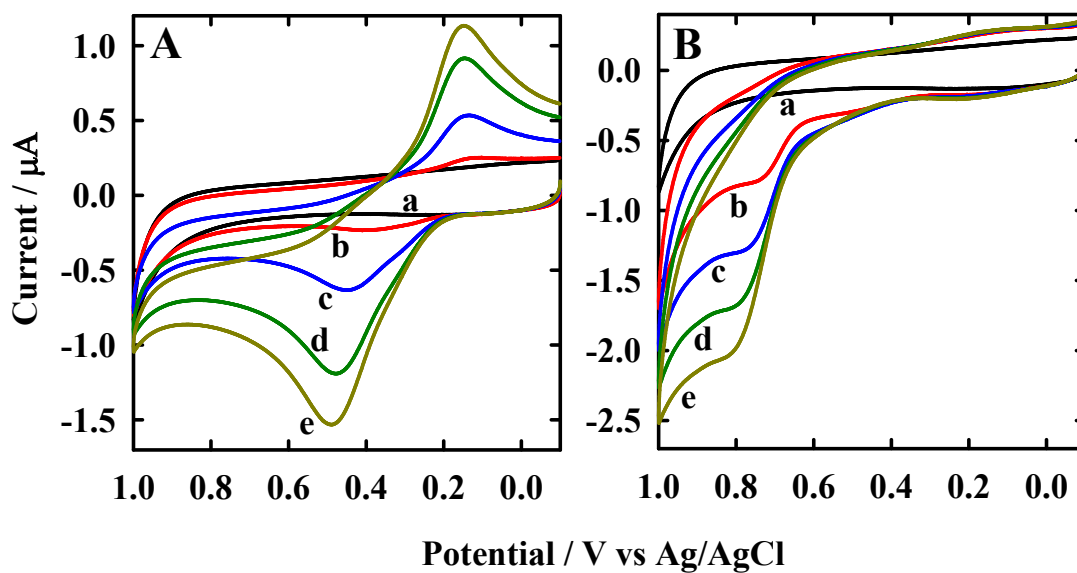


Fig. S4 CVs demonstrating the oxidation of (A) DA and (B) AA at the bare GCE: curves a-e correspond to CVs in the presence of 0, 1, 5, 10, and 15 μ M of analyte, respectively.

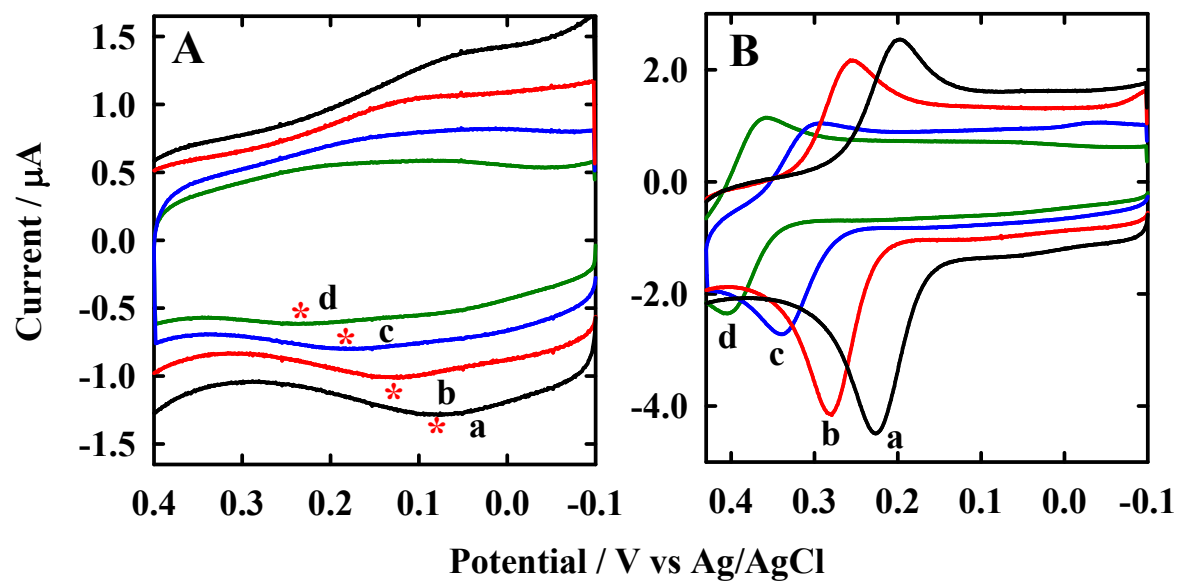


Fig. S5 CVs of GS-Au₂₅ME in the absence (A) and presence (B) of 10 μM DA in 0.1 M KCl at different pHs (maintained using phthalate buffer). Curves a to d correspond to CVs recorded at pH 6, 5, 4 and 3, respectively, and * represents the peak position.