

Supplementary Information

Unique magnetic properties and magnetization reversal process of CoFe_2O_4 nanotubes fabricated by electrospinning†

Jiecai Fu,^{‡a} Junli Zhang,^{‡a} Yong Peng,^a Jianguo Zhao,^b Guoguo Tan,^a Nigel J Mellors,^c Erqing Xie^{*a} and Weihua Han^a

[‡]These authors contributed equally to this work.

E-mail: xieeq@lzu.edu.cn

This file contains supplementary Figures S1 to S2 with legends.

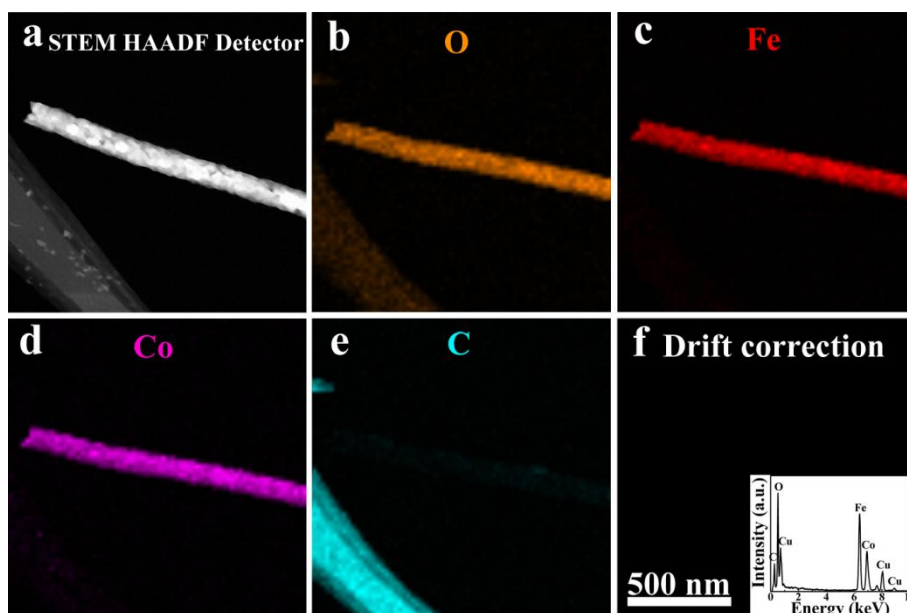


Figure S1 EDX elemental mappings of a single CoFe_2O_4 nanotube performed with a drift corrected system: (a) HAADF-STEM image; (b) oxygen element map; (c) iron element; (d) cobalt element; (e) carbon element map; (f) a drift correction image, Inset, EDX spectrum collected from the a cluster of CoFe_2O_4 nanotubes. All the scale bars are 500 nm.

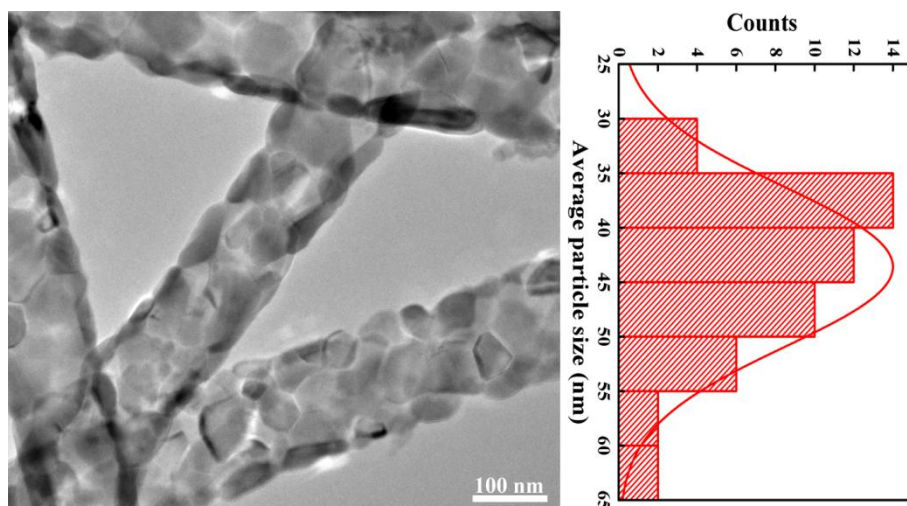


Figure S2 (a) TEM image showing the particles stacking; (b) Statistics analysis of CoFe₂O₄ nanoparticles size included in the CoFe₂O₄ nanotubes.