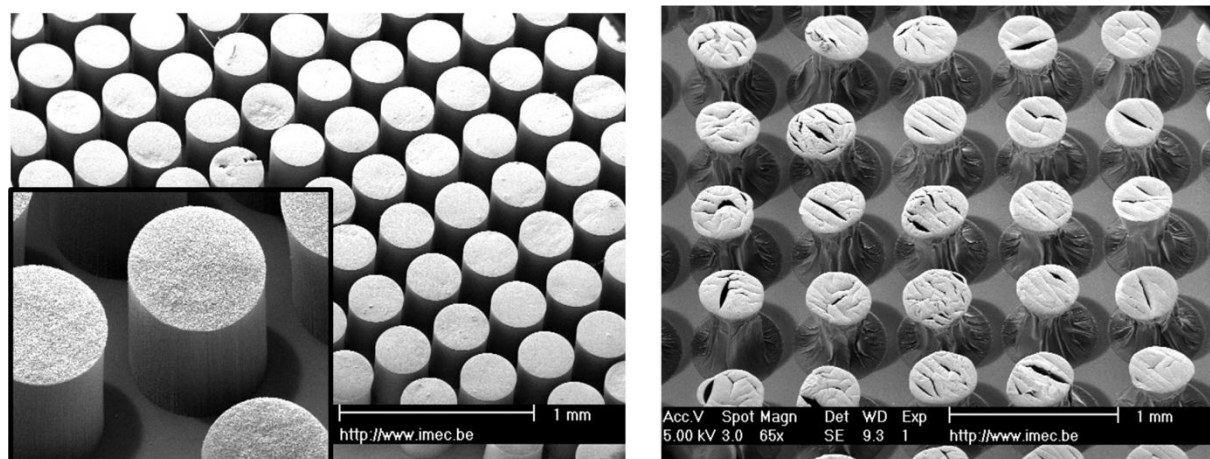


Supplementary Information

Capillary Bending of Janus Carbon Nanotube Micropillars

Sameh Tawfick, A. John Hart, Michaël De Volder



Sample before capillary self-assembly

Sample after capillary self-assembly

Figure S1. (Left) SEM image of circular CNT pillars after Au coating at a small angle. (Right) SEM image of circular CNT pillars after Au coating at a small angle and subsequent capillary self-assembly. Under these parameters, most of the metal is deposited in the top surface of the pillars. This makes the top surface rigid, and does not introduce enough surface anisotropy on the sidewalls to bend the pillars during the capillary self-assembly step.