

Fig. S1 Flow cytometry histogram profiles of DOX fluorescence in WI38 pulmonary fibroblasts incubated with fresh media (control), free DOX, Au-DOX, or Au-DOX-OCT for 120 min (DOX concentration: 1 μ g/mL).

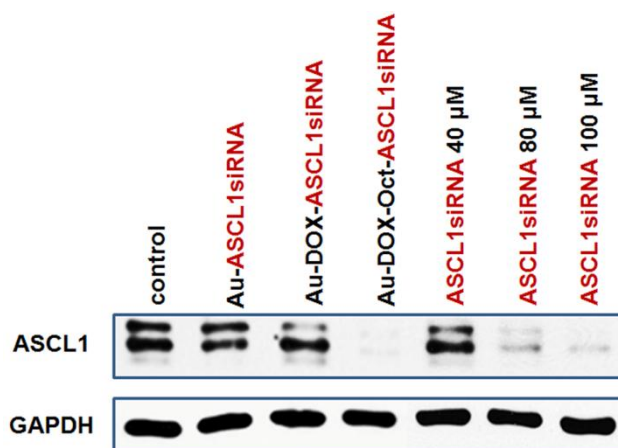


Fig. S2 Comparison of ASCL1 knockdown by Au-DOX-OCT-ASCL1 siRNA (32 μ M of ASCL1 siRNA) and ASCL1 siRNA transfected by lipofectamine (40, 80, and 100 μ M) using Western blot analyses. GAPDH was used as the protein loading control.