

Supporting information of “**Hollow CuO Nanospheres Uniformly Anchored on Porous Si Nanowires: Preparation and Their Potential Use as Electrochemical sensors**”

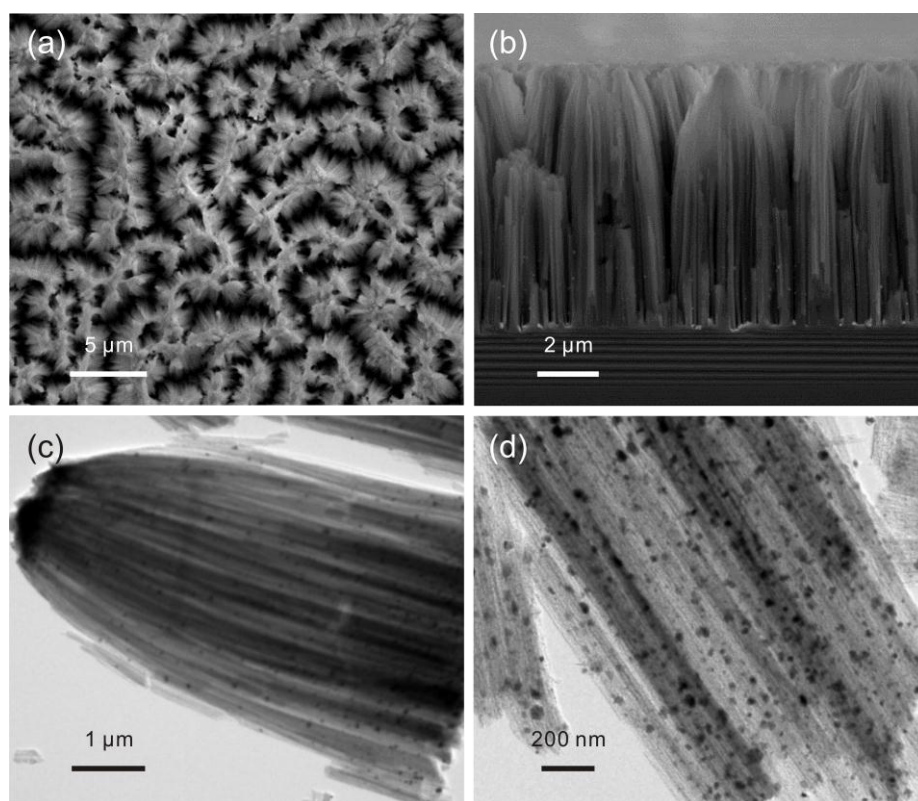


Figure S1. Cu nanoparticles anchored on porous Si nanowires. (a) and (b) SEM images of top and side view, respectively; (c) TEM image of individual bunch of porous Si nanowires and (d) High magnified TEM image.