

Visualization of Custom-tailored Iron Oxide

Nanoparticles Chemistry, Uptake, and Toxicity

(Supplementary Information)

FIGURES

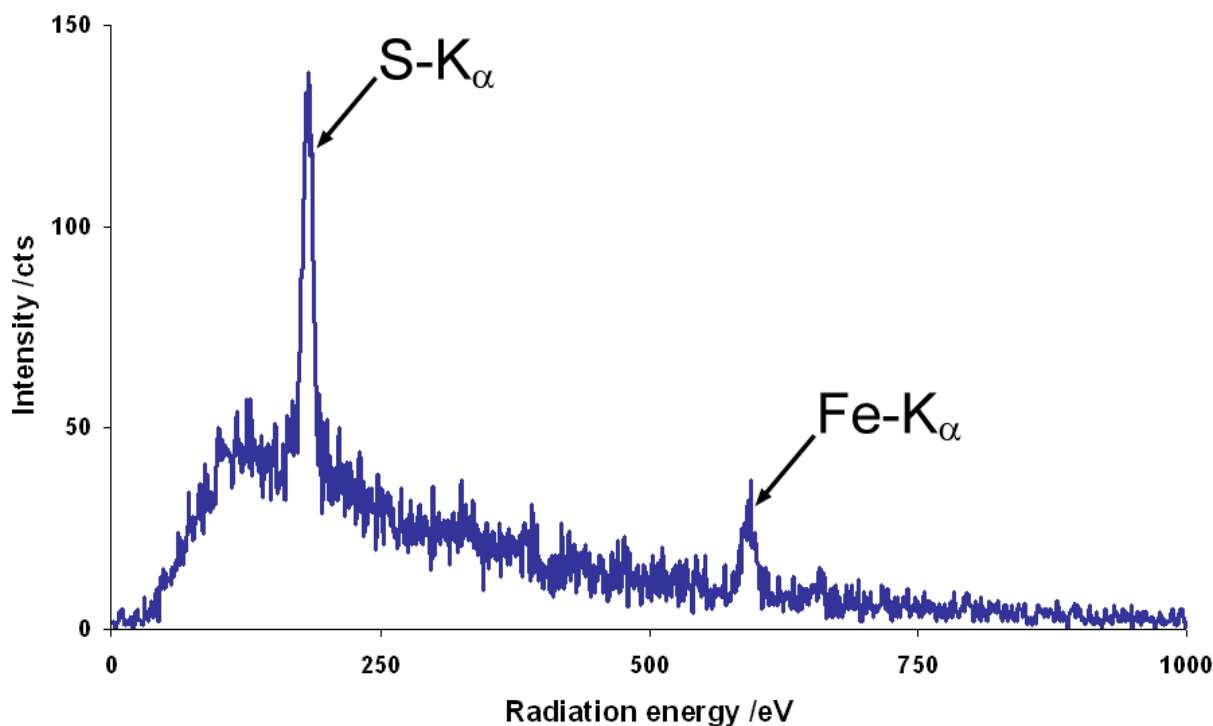
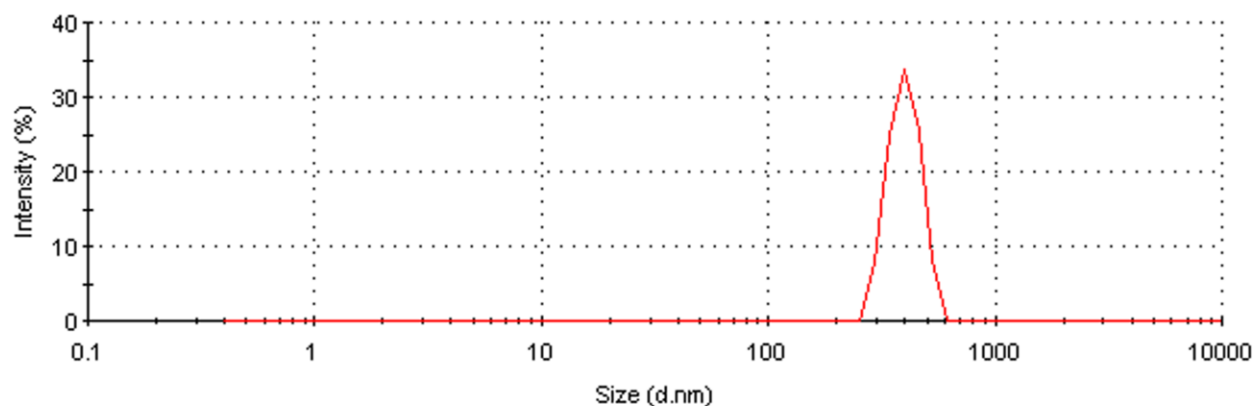


Figure S1. SEM-EDS area spectrum of a dry sample of prepared iron oxide NPs with notated energy lines for peaks. The sulfur is a residue of dried DMSO.



	Diam. (nm)	% Intensity	Width (nm)
Z-Average (d.nm): 431,5	Peak 1: 402,1	100,0	63,26
Pdl: 0,190	Peak 2: 0,000	0,0	0,000
Intercept: 0,904	Peak 3: 0,000	0,0	0,000
Result quality : Good			

Figure S2. DLS measurement of the iron oxide NPs in ethanol and accompanying data.

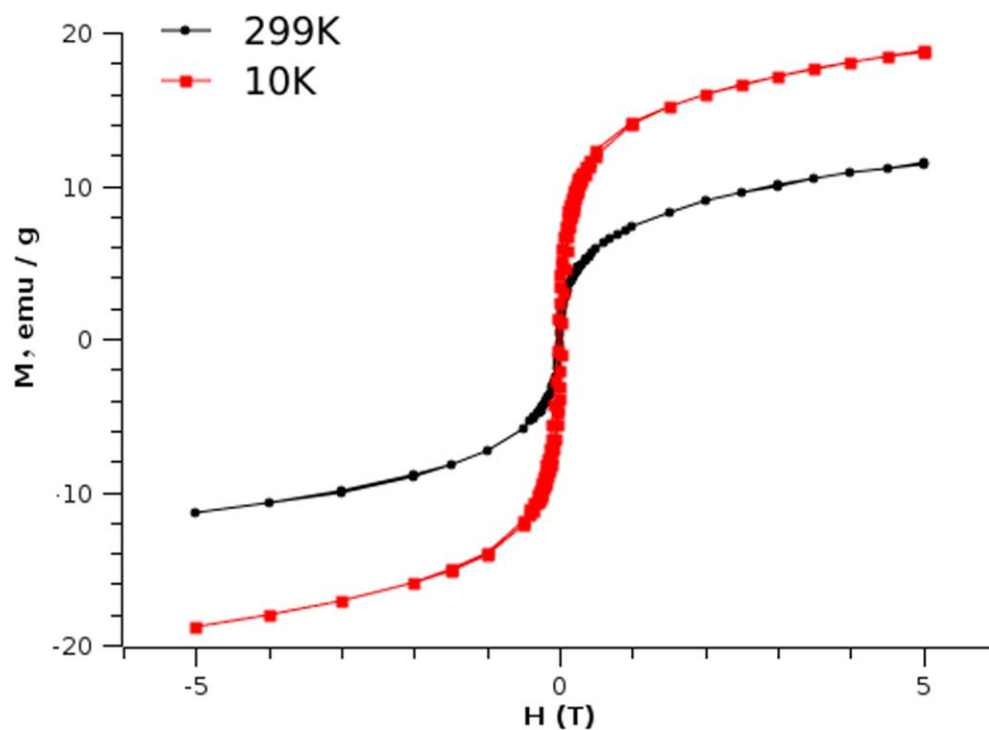


Figure S3. Temperature dependence of the magnetic properties of the prepared iron oxide NPs.