

Electronic Supplementary Information (ESI)

***In situ* supported MnO_x-CeO_x on carbon nanotubes for the low-temperature selective catalytic reduction of NO with NH₃**

Dengsong Zhang,^{*a,b} Lei Zhang,^a Liyi Shi,^{*b,c} Cheng Fang,^{b,c} Hongrui Li,^a Ruihua Gao,^a Lei Huang,^a and Jianping Zhang^b

^a *Research Center of Nano Science and Technology, Shanghai University, Shanghai 200444, China.*

Fax: 86 21 66134852; E-mail: dszhang@shu.edu.cn

^b *Department of Chemistry, Shanghai University, Shanghai 200444, China. E-mail: shiliyi@shu.edu.cn*

^c *School of Material Science and Engineering, Shanghai University, Shanghai 200072, China.*

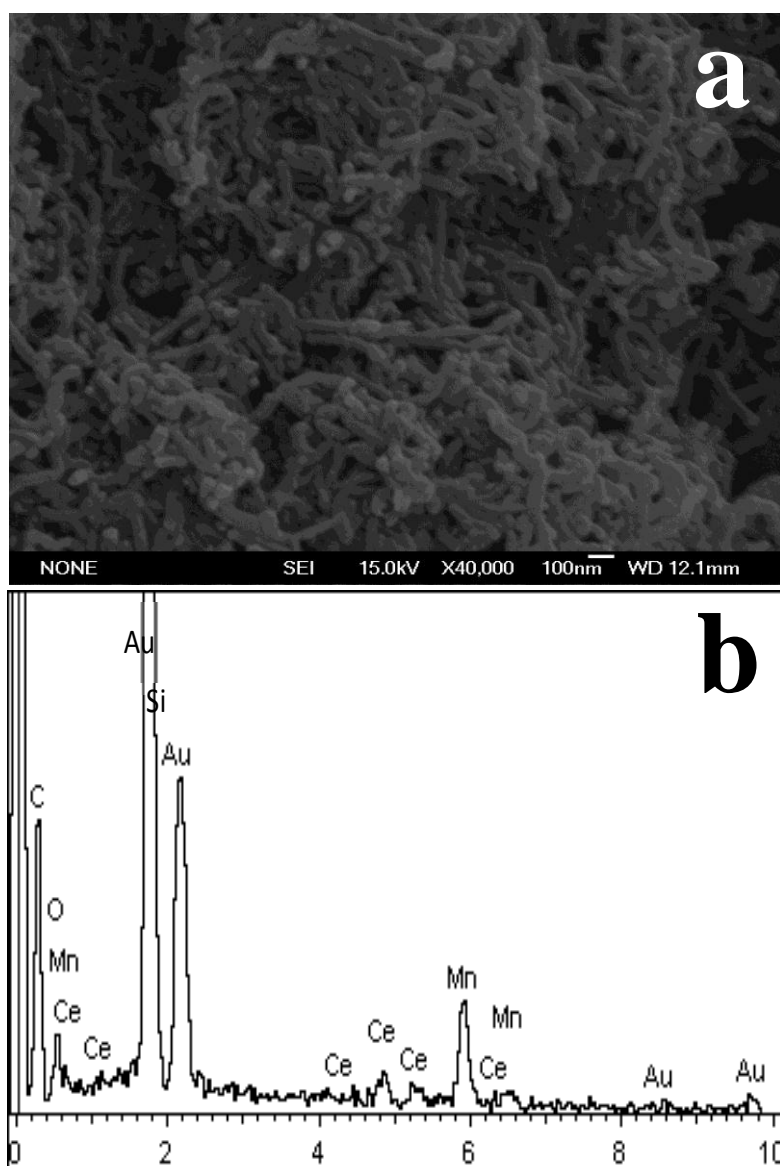


Fig. S1 (a) SEM image; and (b) EDS analysis of MnCe@CNTs-R.

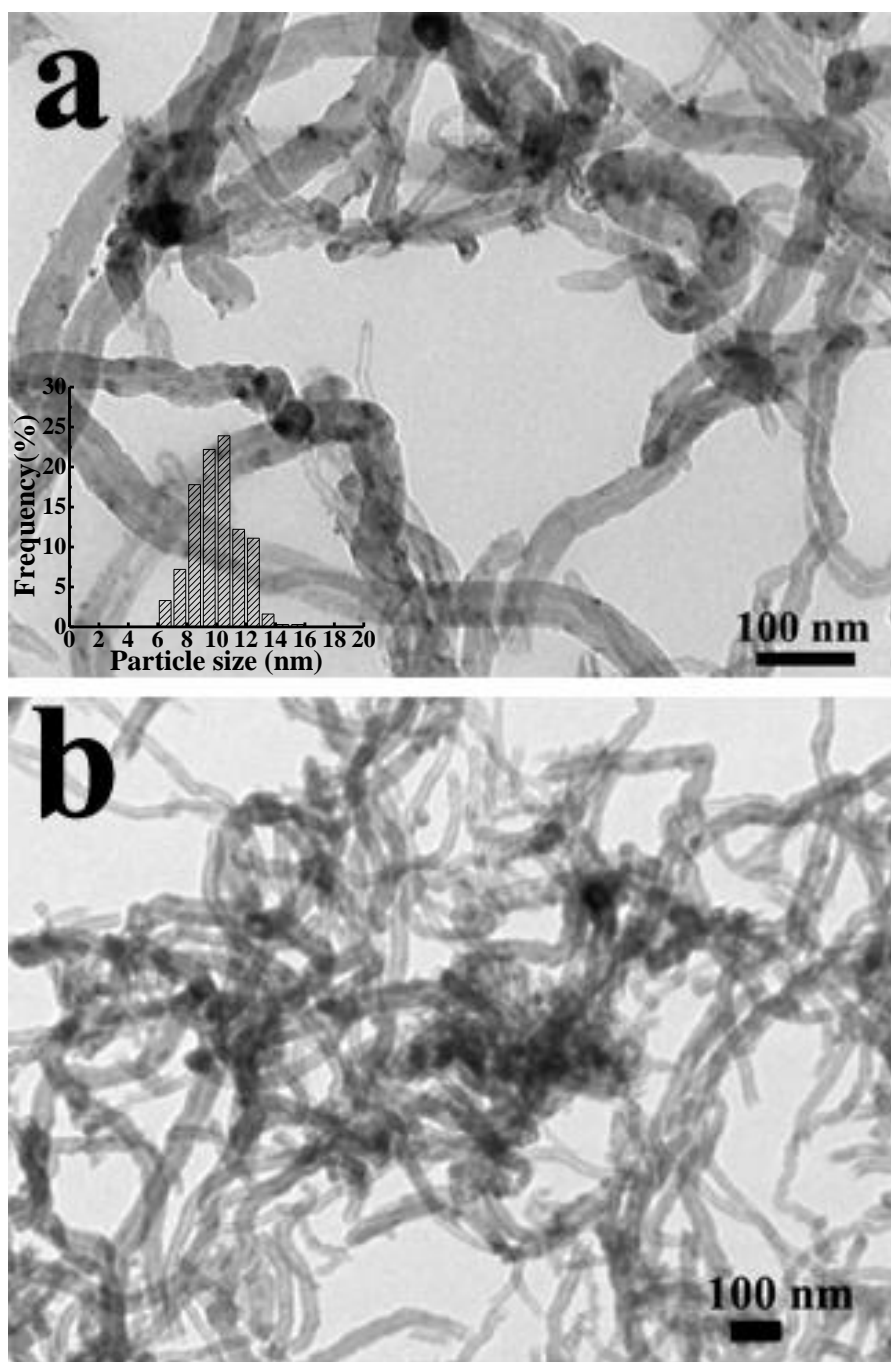


Fig. S2 TEM images of (a) MnCe/CNTs-I and (b) MnCe/CNTs-M.

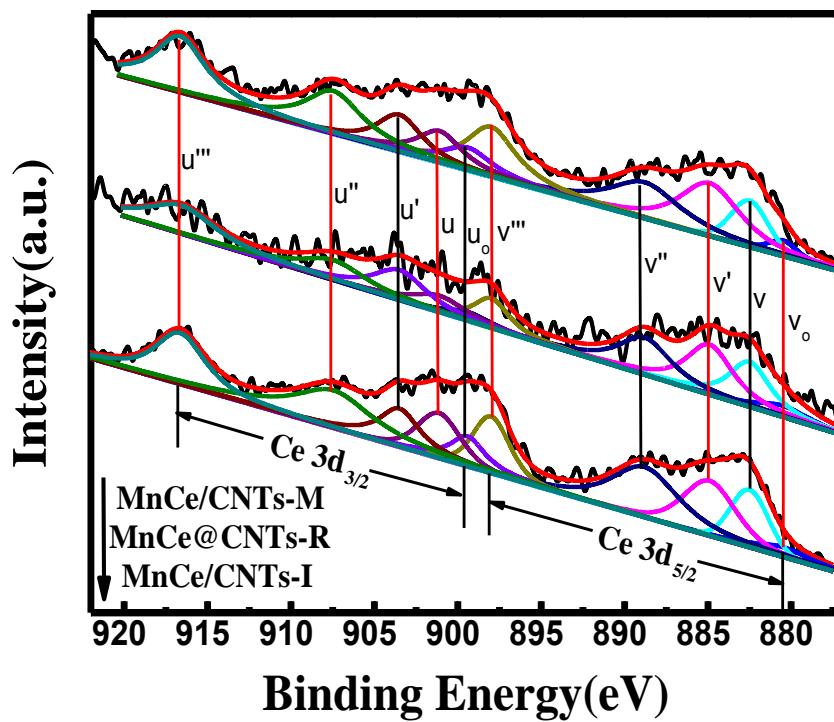


Fig. S3 XPS spectra for Ce 3d of the catalyst samples