

Cite this: DOI: 10.1039/c0xx00000x

www.rsc.org/xxxxxx

ARTICLE TYPE

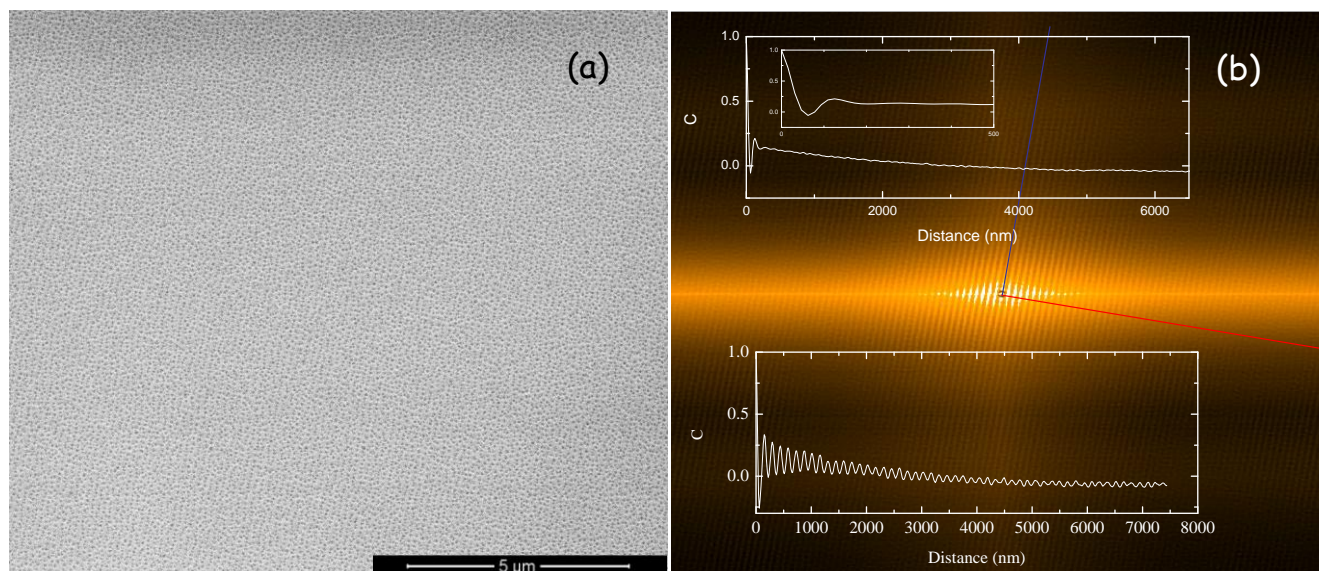
Supplementary information Self-assembled Pit Arrays as Templates for the Integration of Au Nano-crystals in Oxide Surfaces

Z. Konstantinović,^a F. Sandiumenge,^a J. Santiso,^b Ll. Balcells^a and B. Martínez^a

Received (in XXX, XXX) Xth XXXXXXXXXX 200X, Accepted Xth XXXXXXXXXX 200X

DOI: 10.1039/b000000x

Long range order in one direction



10 **Fig. S1** (a) Large area SEM image ($1500 \times 1300 \text{ nm}^2$) where regular nanopit arrays are visible in the whole surface and (b) corresponding autocorrelation functions C with profiles along (blue line) and normal (red line) to nanopit array.