

Supplementary Information

Archetype Sandwich Structured CuO for High Performance Non-enzymatic Sensing of Glucose

Sumanta Kumar Meher and G Ranga Rao*

Department of Chemistry, Indian Institute of Technology Madras, Chennai – 600036, India

E-mail: grrao@iitm.ac.in

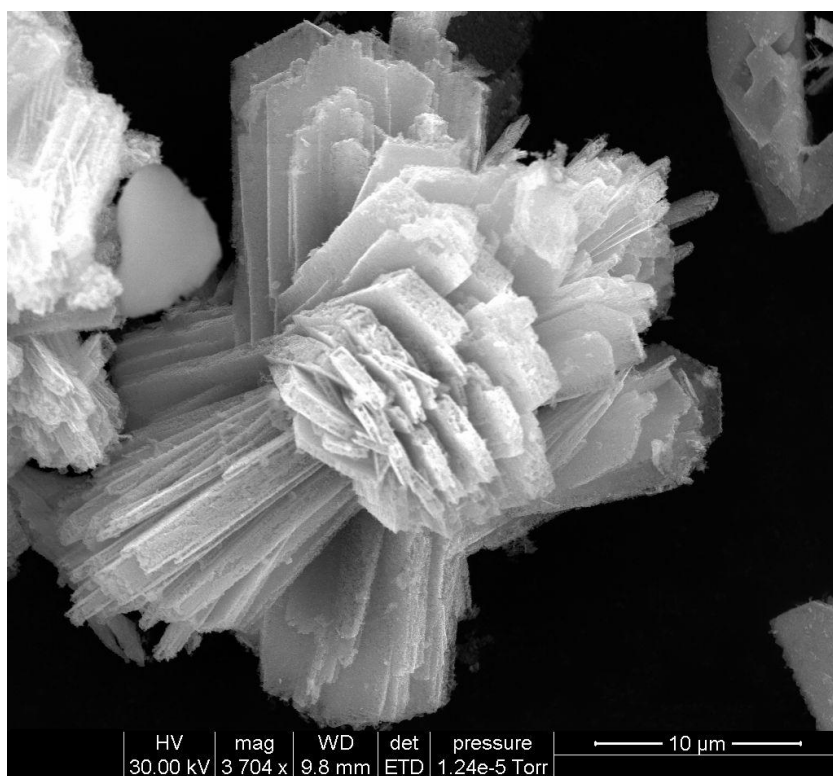


Fig. S1 FESEM image of $\text{Cu}_2(\text{OH})_2\text{CO}_3$ precursor sample.