

Electronic Supplementary Information (ESI)

**Nacre-like Strong Composite Films Prepared by Casting Silk
Fibroin/Graphene Oxide Hydrogels**

Liang Huang, Chun Li, Wenjing Yuan and Gaoquan Shi*

*Department of Chemistry, Tsinghua University, Beijing 100084, People's Republic of
China.*

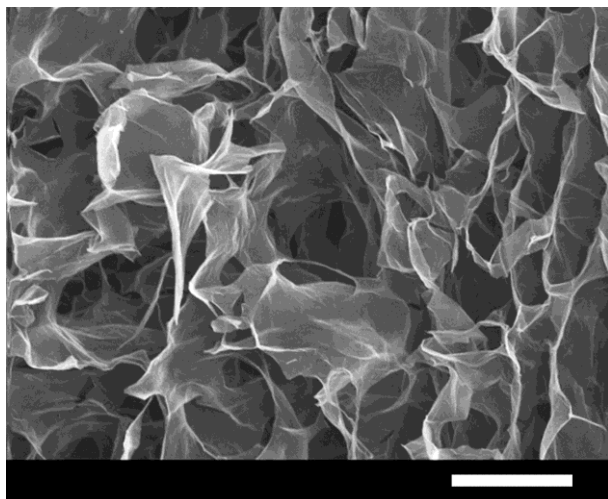


Fig. S1 SEM image of lyophilized 9 mg mL⁻¹ GO dispersion. Scale bar = 10 μm.

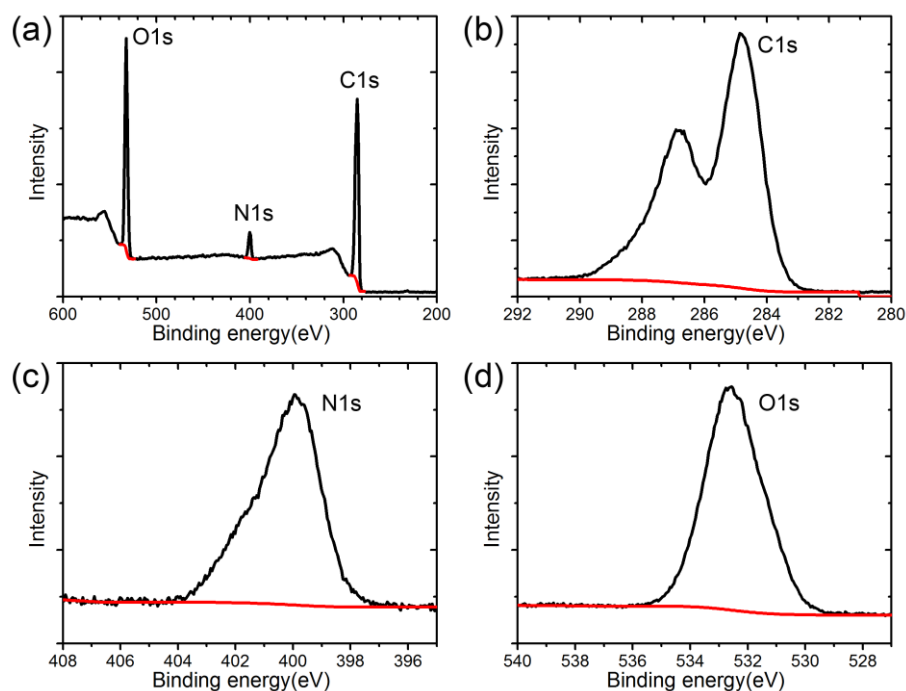


Fig. S2 (a) XPS spectrum of SF/GO (15 wt%) composite film and the corresponding magnified (b) C1s, (c) N1s, (d) O1s peaks. The red lines are their baselines.

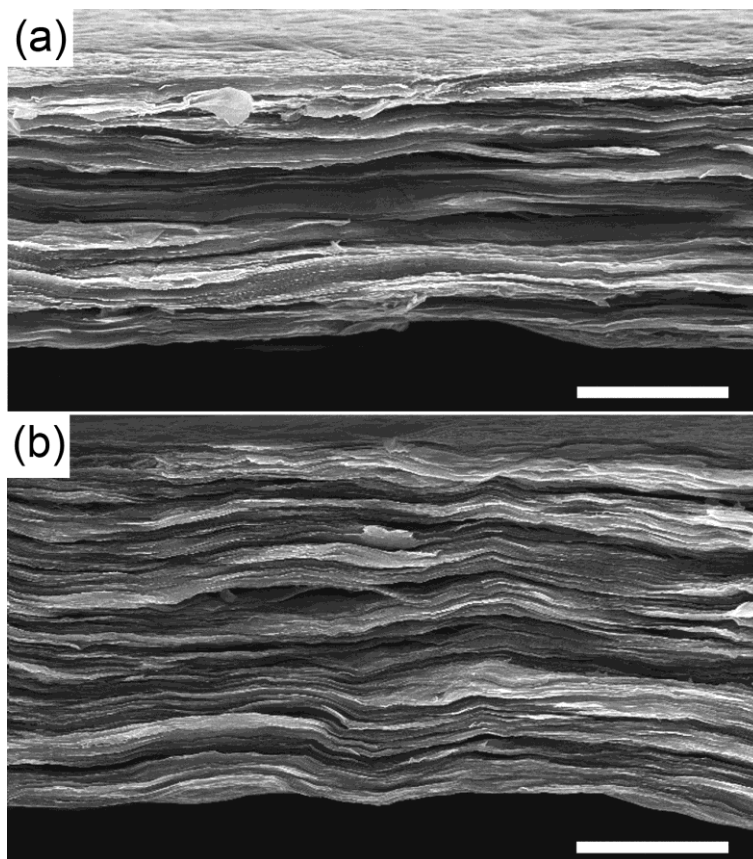


Fig. S3 SEM images of the failure surfaces of (a) a GO film and (b) a SF/GO composite film containing 15 wt% SF. Scale bar = 5 μm .