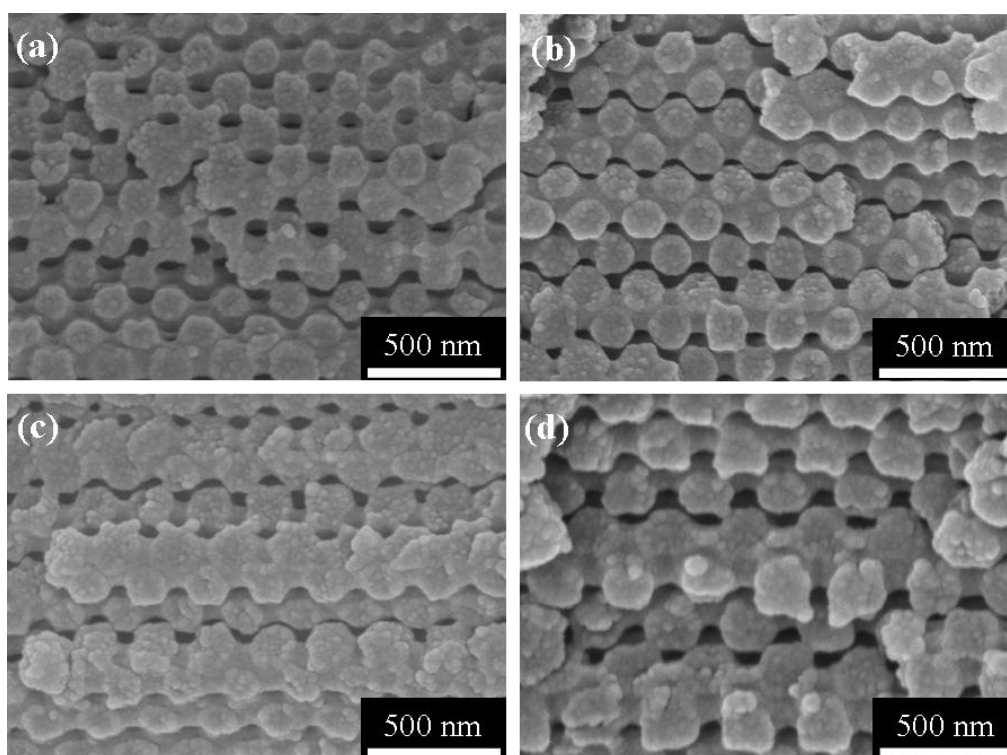


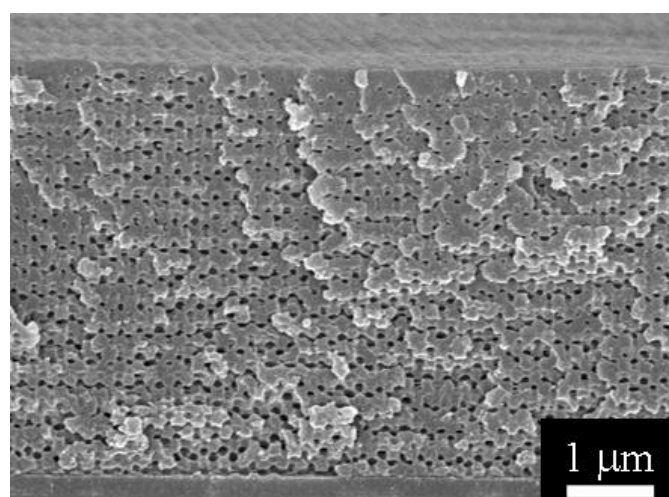
# Supporting Information

## **Multicolor patterning using holographic woodpile photonic crystals at visible wavelengths**

**This supplementary information includes**  
Supplementary Figures (Figure S1-S2)



**Figure S1.** Cross-sectional SEM images of 3D woodpile structures with different laser exposure time. Cross-section SEM images of 3D woodpile structures with laser exposure time of (a) 0.5 sec, (b) 0.6 sec, (c) 0.7 sec, and (d) 0.9 sec.



**Figure S2.** Cross-sectional SEM image of the double exposed (0.5 s laser exposure and 20 s UV light exposure) region.