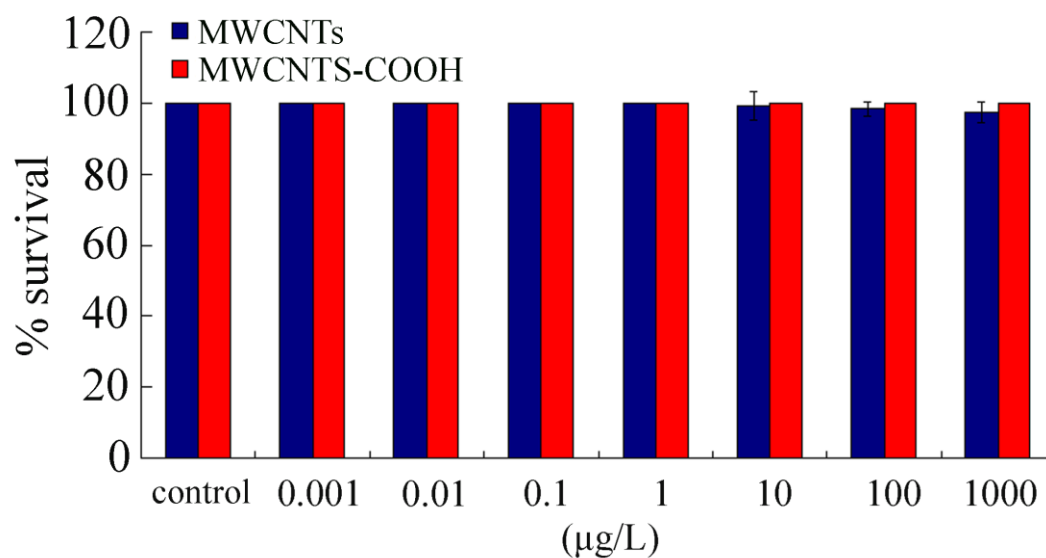


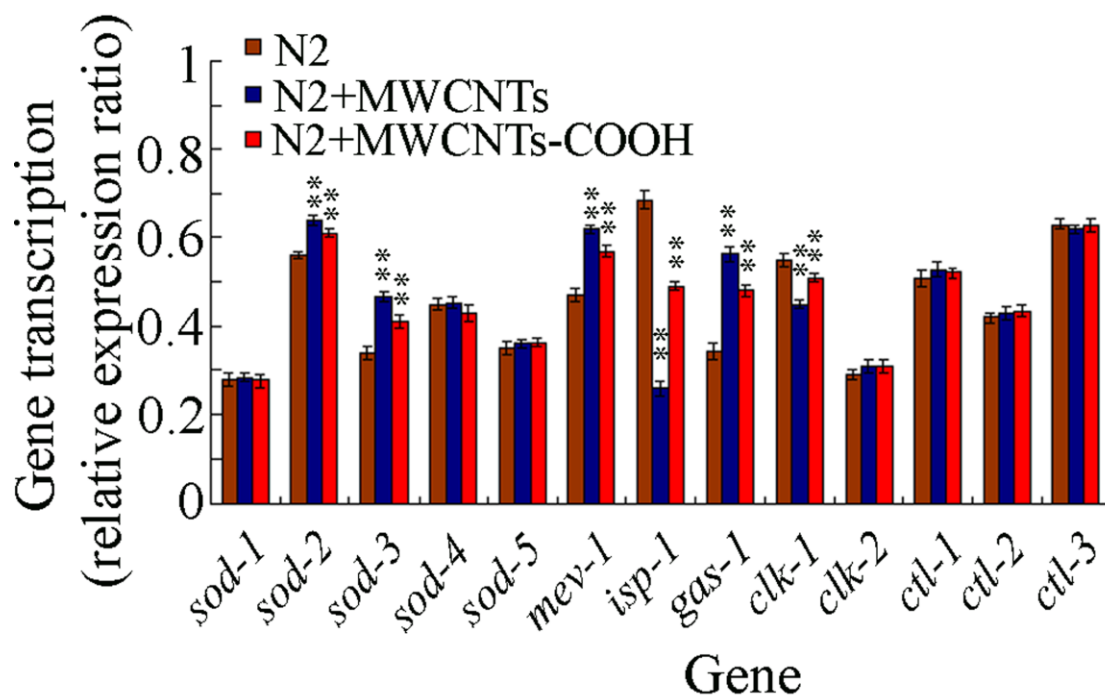
Supplementary Information:

Supplementary Figure 1:



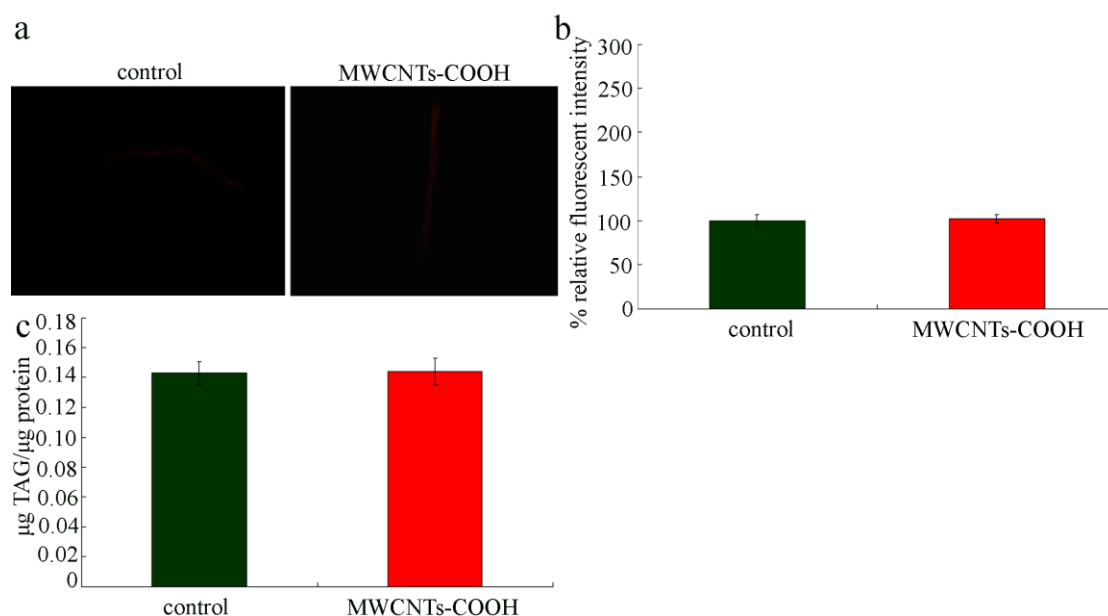
Supplementary Figure 1. Comparison of survivals in MWCNTs-COOH exposed nematodes from those in MWCNT exposed nematodes. The exposure was performed from L1-larvae to adult. Bars represent mean \pm S.E.M.

Supplementary Figure 2:



Supplementary Figure 2. Comparison of expression patterns of genes required for oxidative stress in nematodes exposed to 1 mg L⁻¹ of MWCNTs and MWCNTs-COOH. The exposure was performed from L1-larvae to adult. Bars represent mean \pm S.E.M. ** $P < 0.01$.

Supplementary Figure 3:



Supplementary Figure 3. Exposure to $10 \mu\text{g L}^{-1}$ of MWCNTs-COOH induced the similar fat storage to that of control in nematodes. a) Nile Red staining of control and MWCNTs-COOH exposed nematodes. b) Comparison of relative fluorescent intensities of Nile Red in control and MWCNTs-COOH exposed nematodes. c) Comparison of triglyceride amount of control and MWCNTs-COOH exposed nematodes. The exposure was performed from L1-larvae to adult. Bars represent mean \pm S.E.M.

Supplementary Table 1. Primers used for quantitative real-time polymerase chain reaction (PCR)

Gene	Forward primer	Reverse primer
<i>act-1</i>	CTGCAGATGTGTGACGACGAGGTT	CTGCAGGAAGCACTTGCGGTGAAC
<i>clk-1</i>	CACATACTGCTGCTTCTCGT	TGAACCAACAGATGAACCTT
<i>clk-2</i>	TATCCTTTGTTGGTTTTGCC	CAAATACACTCTACACCGCA
<i>ctl-1</i>	CTCCTACACGGACACGCAT	GCATCTCCCTGGCTTTCAT
<i>ctl-2</i>	CGAACAGCTTCAACTATGG	GTGGCTGGGAATGTGGTAT
<i>ctl-3</i>	TTCTCCTACACGGACACGC	GCATCTCCCTGGCTTTCAT
<i>gas-1</i>	CTTGGTCTTTGGCTGTTGA	CTTGGTCTTTGGCTGTTGA
<i>isp-1</i>	GCAGAAAGATGAATGGTCC	CAGAAGCGTCGTAGTGAGA
<i>mev-1</i>	GGAATTCGCTTCTTAGGAT	GCAGTCTTGTTGCTCTTGT
<i>sod-1</i>	ACGCTCGTCACGCTTAC	TCTTCTGCCTTGTCTCCG
<i>sod-2</i>	GGCATCAACTGTCGCTGT	ACAAGTCCAGTTGTTGCC
<i>sod-3</i>	TGACATCACTATTGCGGT	GGGACCATTCCTTCCAAA
<i>sod-4</i>	CACCAGATGACTCGAACA	AATGAGGCAAGAGAGTCG
<i>sod-5</i>	ATATTGCCAATGCCGTTT	CTCTTCACCTTCGGCTTT