

Supporting Information

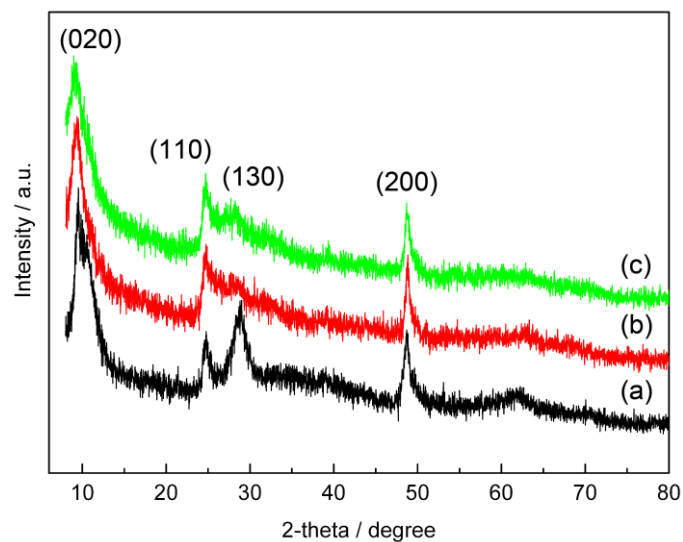


Figure S1. X-ray diffraction pattern of spherical titanate aggregates with different building units: (a) nanoparticles, (b) nanosheets, and (c) nanotubes.

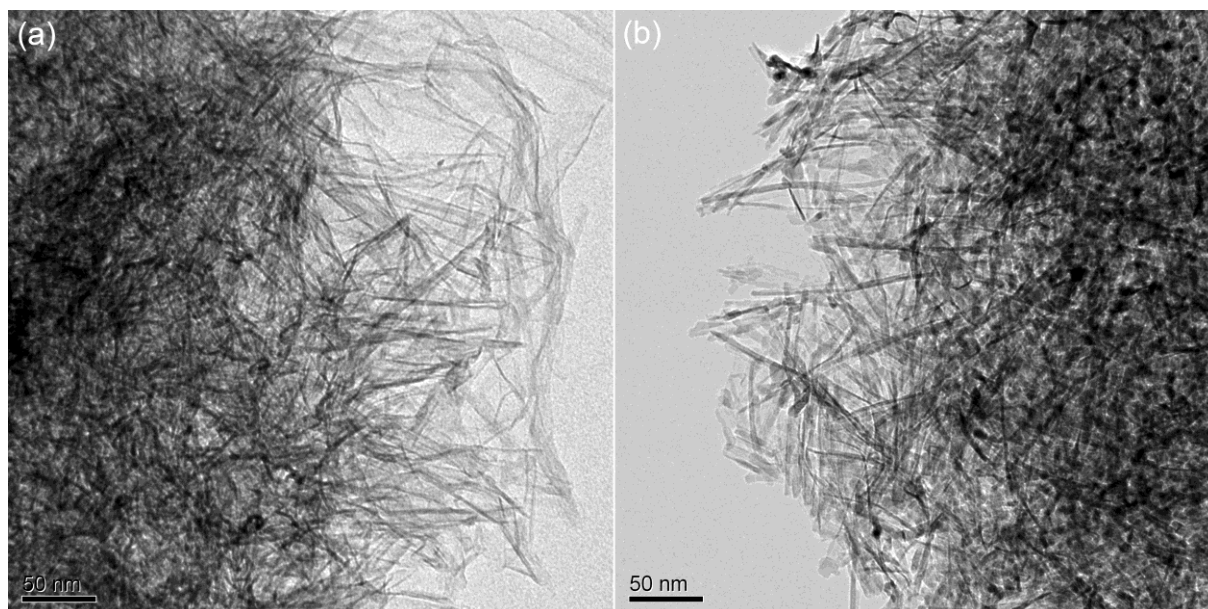


Figure S2. TEM images of spherical TiO_2 aggregates annealing at 450 °C for 30 min.

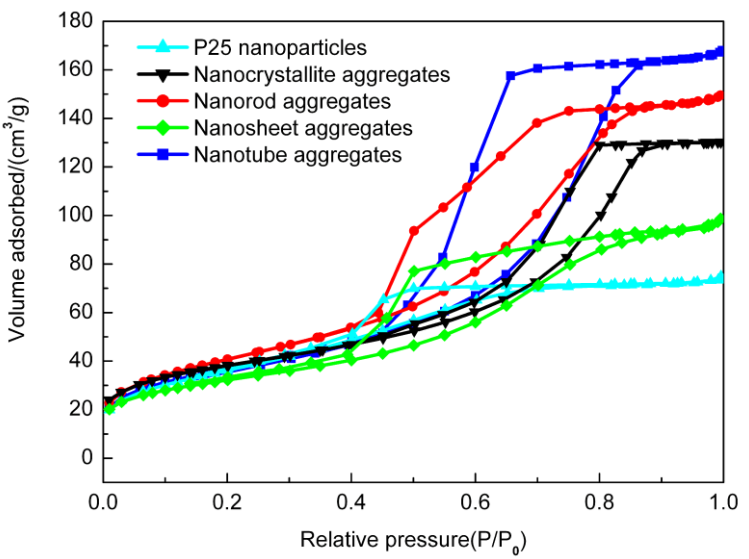


Figure S3. N₂ adsorption-desorption isotherms of spherical TiO₂ aggregates at 77 K

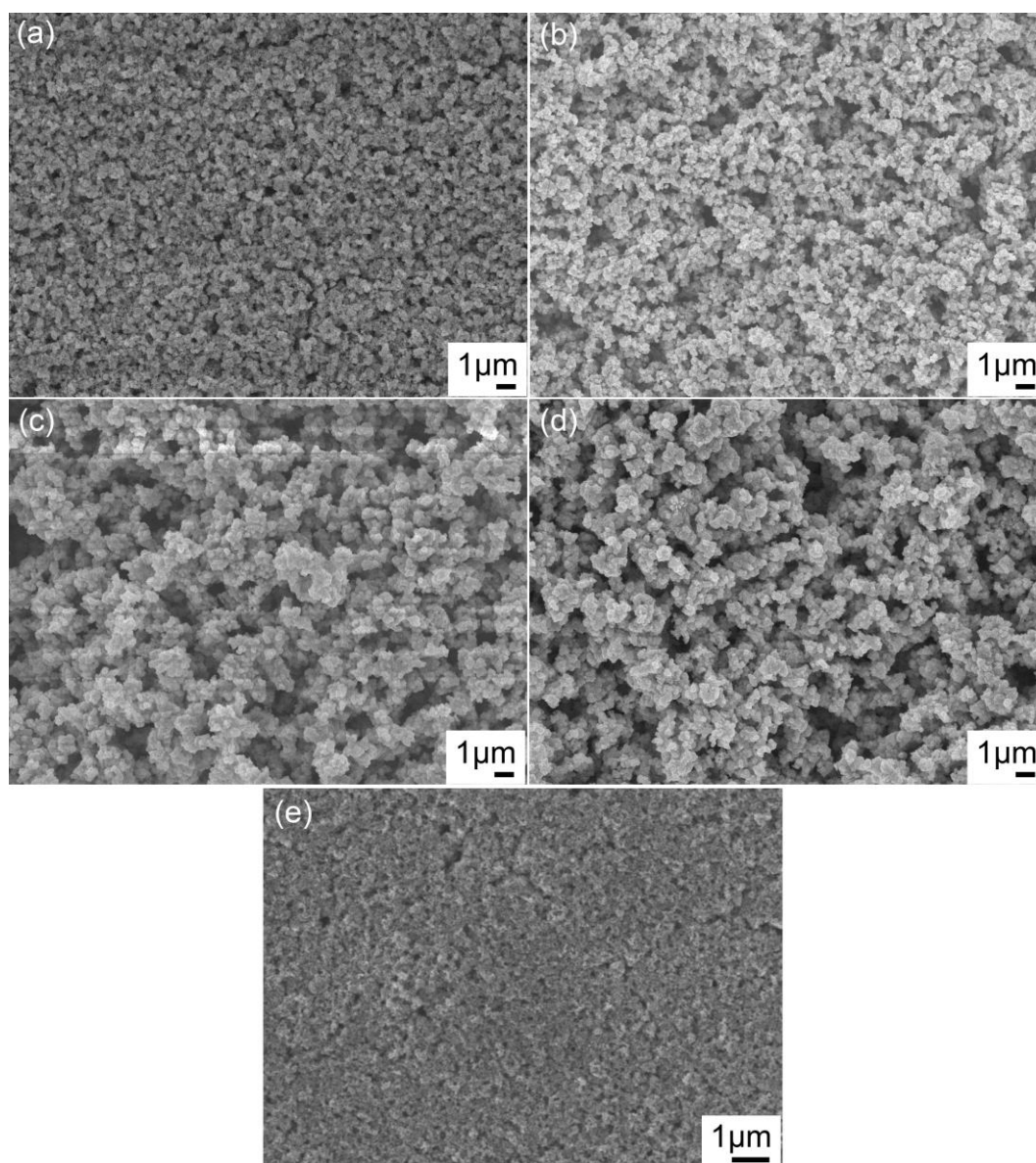


Figure S4. SEM images of photoelectrode films (a) nanocrystallite aggregates, (b) nanorod aggregates, (c) nanosheet aggregates, (d) nanotube aggregates, and (e) P25 nanoparticles