

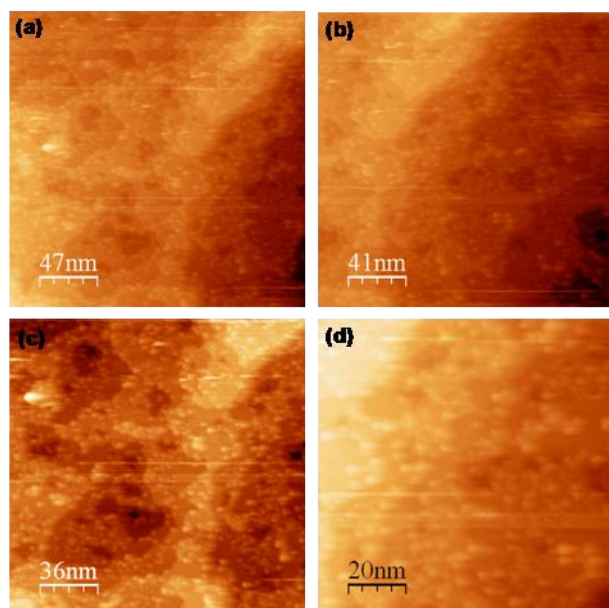
Electronic Supplementary Information for

**A facile route to model catalysts: the synthesis of Au@Pd core shell nanoparticles on  $\gamma$ -Fe<sub>2</sub>O<sub>3</sub> (0001)**

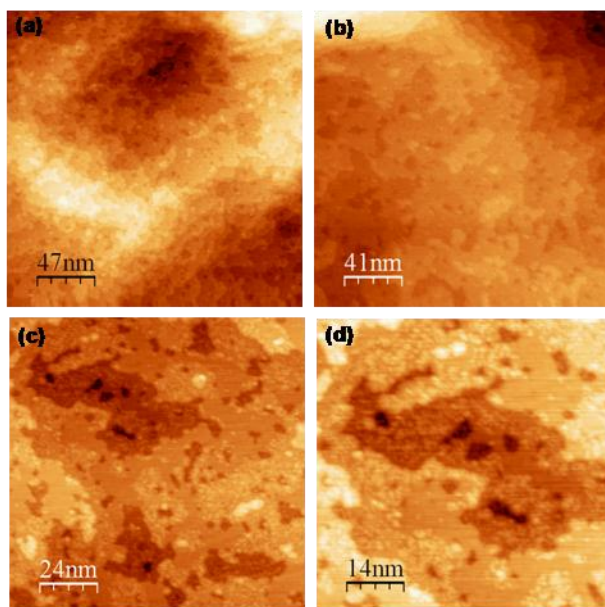
Robert J. Davies,\* Michael Bowker, Philip R. Davies, David J. Morgan

Cardiff Catalysis Institute, School of Chemistry, Cardiff University, Cardiff, CF10 3AT

\*daviesrj11@cf.ac.uk



**Fig. SI1** STM images of the  $\gamma$ -Fe<sub>2</sub>O<sub>3</sub> (2×2) surface after deposition of Pd.



**Fig. SI2** STM images of the  $\gamma$ -Fe<sub>2</sub>O<sub>3</sub> (2×2) surface after deposition of Pd and subsequent heating to 573 K for 1 minute.