

Supplementary Information

Tracking the Intracellular Drug Release from Graphene Oxide using Surface-Enhanced Raman Spectroscopy

Jie Huang,^a Cheng Zong,^b He Shen,^a Yuhua Cao,^a Bin Ren,^{*b} and Zhijun Zhang^{*a}

^a *Suzhou Key Laboratory of Nanobiomedicine, Division of Nanobiomedicine, Suzhou Institute of Nano-Tech and Nano-Bionics, Chinese Academy of Sciences, Suzhou 215123, China*

^b *State Key Laboratory of Physical Chemistry of Solid Surfaces and College of Chemistry and Chemical Engineering, Xiamen University, Xiamen 361005, China*

* Corresponding author. E-mail: bren@xmu.edu.cn, Tel: 86-592-2186532, Fax: 86-592-2181906; E-mail: zjzhang2007@sinano.ac.cn, Tel: 86-512-62872556, Fax: 86-512-62603079.

† Electronic supplementary information (ESI) available: Cytotoxicity of Ag-GO; SERS image after the cell incubated with Ag-GO for 2 hr; Fluorescence images of Ca Ski cells.

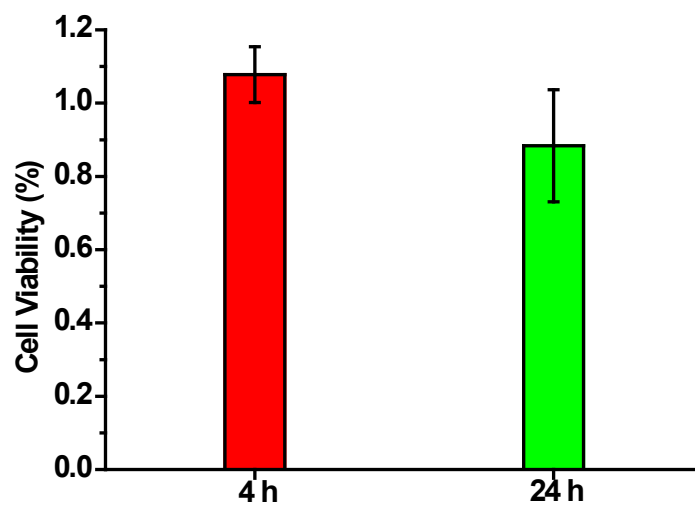


Figure S1 Cytotoxicity of Ag-GO (0.106 mM of Ag) incubated with Ca Ski cells.



Figure S2 (A) Bright field microscopic images of Ca Ski cells incubated with Ag-GO/DOX. (B) SERS image produced by the Raman band of DOX at 460 cm^{-1} (baseline corrected) after the cell incubated with Ag-GO for 2 hr and detected at 28 min.

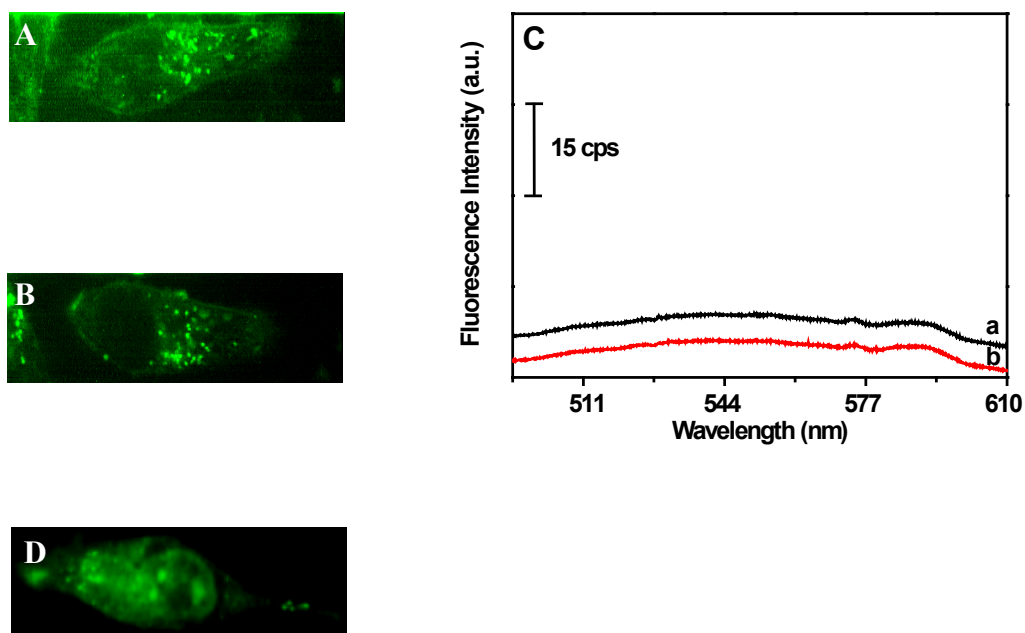


Figure S3 Fluorescence images of Ca Ski cells before (A) and after (B) incubating with Ag-GO and the corresponding fluorescence spectra (curves a and b in C), and the 3D image of a living cell (D).