

Electronic Supplementary Information For

Biomimetic Layer-by-Layer Co-mineralization Approach Towards
TiO₂/Au Nanosheets With High Rate Performance for Lithium Ion
Batteries

*Bo Hao, Yong Yan, Xiaobo Wang and Ge Chen**

College of Environmental & Energy Engineering, Beijing University of Technology, Pingleyuan
100, 100124, Beijing, P.R. China.

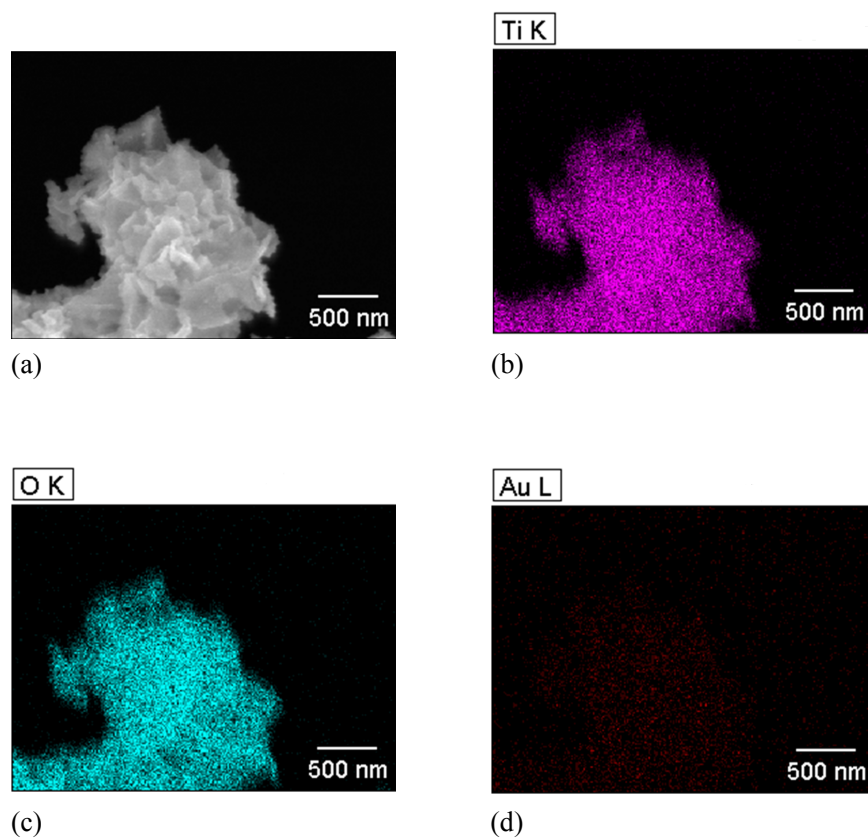


Figure S1 (a) the SEM image of TiO_2/Au nanosheets; (b) the EDX mapping of Ti species of TiO_2/Au nanosheets; (c) the EDX mapping of O species of TiO_2/Au nanosheets; (d) the EDX mapping of Au species of TiO_2/Au nanosheets.